



## Pattern Collection: Women



### Pathways Poncho

Designed by Rachel Brockman

#### SIZES

Extra Small/Small (Medium/Large,  
1X/2X, 3X/4X)

Modeled in size Extra Small/Small with  
19" of positive ease.

#### FINISHED MEASUREMENTS

**Width:** 22¾ (27¾, 32¾, 37¾)"

**Length:** 24¾ (25, 25¼, 25½)"

#### MATERIALS

**Fibra Natura Papyrus** (78% cotton, 22%  
silk; 50g/131 yds)

- 229-19 Ether – 10 (12, 14, 17)  
balls

**Needles:** US Size 6 (4 mm) 32" circular  
(to accommodate large number of sts)  
*or size needed to obtain gauge*

US Size 4 (3.5 mm) 40" circular and set  
of DPNs (for Neck edging) *or size needed  
to obtain gauge*

**Notions:** Tapestry needle, stitch  
markers, removeable stitch markers,  
stitch holders or waste yarn, six 1½"  
buttons

#### GAUGE

24 sts x 29 rows = 4" in Right or Left Path  
with larger ndl

24 sts x 29 rows = 4" in Mock Cable  
Repeat with larger ndl

**Save time, check your gauge.**

**Knit, Relax, Smile, Repeat!**

2018 © Universal Yarn, Inc.

All rights reserved.

[www.universalyarn.com](http://www.universalyarn.com)

This pattern may not be reproduced for business, trade or sale.

## PATTERN NOTES

Mock cables and texture and silk...oh my! Stitches in this knit are entertaining but not overwhelmingly difficult. This lovely warm-weather piece proves that ponchos can be made and worn for all seasons. Layer it over a tank, tee, or dress in the summer, or add sleeves for cooler temperatures.

This poncho is knit flat in pieces. The shoulders are joined using the three-needle bind off. It is finished with a simple ribbed button band. During Neck shaping, maintain pattern as established as much as possible. When in doubt, knit the stitch.

## STITCH GUIDE

### K1, P1 Rib

*(odd number of sts, worked flat)*

**Row 1 (RS):** P1, \* k1, p1; rep from \* to end.

**Row 2 (WS):** K1, \* p1, k1; rep from \* to end.

Rep Rows 1-2 for patt.

### K1, P1 Rib

*(even number of sts, worked flat)*

**Row 1:** \* K1, p1; rep from \* to end.

Rep Row 1 for patt.

### K1, P1 Rib

*(even number of sts, worked in the round)*

**Rnd 1:** \* K1, p1; rep from \* to end.

Rep Rnd 1 for patt.

### Mock Cable Repeat

*(multiple of 9 sts + 10)*

**RS Rows 1, 3:** P2, \* k6, p3; rep from \* to last 8 sts, k6, p2.

**WS Rows 2, 4:** K2, p6, \* k3, p6; rep from \* to last 2 sts, k2.

**Row 5:** P2, \* k2, k2tog, k2, yo, p3; rep from \* to last 8 sts, k2, k2tog, k2, yo, p2.

**Row 6:** K2, p1 tbl, p5, \* k3, p1 tbl, p5; rep from \* to last 2 sts, k2.

**Row 7:** P2, \* k1, k2tog, k2, yo, k1, p3; rep from \* to last 8 sts, k1, k2tog, k2, yo, k1, p2.

**Row 8:** K2, p1, p1 tbl, p4, \* k3, p1, p1 tbl, p4; rep from \* to last 2 sts, k2.

**Row 9:** P2, \* k2tog, k2, yo, k2, p3; rep from \* to last 8 sts, k2tog, k2, yo, k2, p2.

**Row 10:** K2, p2, p1 tbl, p3, \* k3, p2, p1 tbl, p3; rep from \* to last 2 sts, k2.

Rep Rows 1-10 for patt.

## Cable Panel

*(panel of 6 sts)*

**RS Rows 1, 3:** K6.

**WS Rows 2, 4:** P6.

**Row 5:** K2, k2tog, k2, yo.

**Row 6:** P1 tbl, p5.

**Row 7:** K1, k2tog, k2, yo, k1.

**Row 8:** P1, p1 tbl, p4.

**Row 9:** K2tog, k2, yo, k2.

**Row 10:** P2, p1 tbl, p3.

Rep Rows 1-10 for patt.

## Right Path

*(multiple of 6 sts)*

**Row 1 (RS):** K4, \* sl 3 wyif, k3; rep from \* to last 2 sts, sl 1 wyif, k1.

**Row 2 (WS):** P1, sl 1 wyib, \* sl 1 wyib, p3, sl 2 wyib; rep from \* to last 4 sts, sl 1 wyib, p3.

**Row 3:** K2, sl 2 wyif, \* sl 1 wyif, k3, sl 2 wyif; rep from \* to last 2 sts, sl 1 wyif, k1.

**Row 4:** P2, \* sl 3 wyib, p3; rep from to last 4 sts, sl 3 wyib, p1.

**Row 5:** K1, sl 2 wyif, k1, \* k2, sl 3 wyif, k1; rep from \* to last 2 sts, k2.

**Row 6:** P2, \* p2, sl 3 wyib, p1; rep from \* to last 4 sts, p2, sl 1 wyib, p1.

Rep Rows 1-6 for patt.

## Left Path

*(multiple of 6 sts)*

**Row 1 (RS):** K1, sl 1 wyif, \* k3, sl 3 wyif; rep from \* to last 4 sts, k4.

**Row 2 (WS):** P3, sl 1 wyib, \* sl 2 wyib, p3, sl 1 wyib; rep from \* to last 2 sts, sl 1 wyib, p1.

**Row 3:** K1, sl 1 wyif, \* sl 2 wyif, k3, sl 1 wyif; rep from \* to last 4 sts, sl 2 wyif, k2.

**Row 4:** P1, sl 3 wyib, \* p3, sl 3 wyib; rep from \* to last 2 sts, p2.

## Knit, Relax, Smile, Repeat!

2018 © Universal Yarn, Inc.

All rights reserved.

[www.universalyarn.com](http://www.universalyarn.com)

This pattern may not be reproduced for business, trade or sale.

**Row 5:** K2, \* k1, sl 3 wyif, k2; rep from \* to last 4 sts, k1, sl 2 wyif, k1.

**Row 6:** P1, sl 1 wyib, p2, \* p1, sl 3 wyib, p2; rep from \* to last 2 sts, p2.

Rep Rows 1-6 for patt.

## PONCHO

### Front

With smaller ndl, cast on 136 (166, 196, 226) sts. Work in K1, P1 Rib for 1½", ending with a RS row. Change to larger ndl.

### Establish Pattern

**Set-up Row (WS):** P1, pm, p6, pm, k2, pm, p36 (42, 48, 54), pm, k2, p6, [k3, p6] 4 (6, 8, 10) times, k2, pm, p36 (42, 48, 54), pm, k2, pm, p6, pm, p1.

**Row 1 (RS):** K1, sl m, work Cable Panel to m, sl m, p2, sl m, work Right Path patt to m, sl m, work Mock Cable Repeat patt to m, sl m, work Left Path patt to m, sl m, p2, sl m, work Cable Panel to m, sl m, k1.

**Row 2:** P1, sl m, work Cable Panel to m, sl m, k2, sl m, work Left Path patt to m, sl m, work Mock Cable Repeat patt to m, sl m, work Right Path to m, sl m, k2, sl m, work Cable Panel to m, sl m, p1. Cont as est'd until piece meas 22¾ (23, 23¼, 23½)" from cast-on edge, ending with a WS row.

### Shape Front Neck

**Row 1 (RS):** Cont as est'd over 62 (77, 92, 107) Left Front sts, bind off 12 Neck sts, cont as est'd over 62 (77, 92, 107) Right Front sts.

### Right Front

**WS Rows 1 – 7:** Cont as est'd to end.

**Row 2 (RS):** Bind off 6, cont as est'd to end – 56 (71, 86, 101) sts rem.

**Row 4:** Bind off 4, cont as est'd to end – 52 (67, 82, 97) sts rem.

**Row 6:** Bind off 3, cont as est'd to end – 49 (64, 79, 94) sts rem.

**Row 8:** Bind off 2, cont as est'd to end – 47 (62, 77, 92) sts rem.

Cont in patt as est'd until piece meas 2" from Neck bind-off. Place Right Front sts on holder.

### Left Front

Return Left Front sts to ndl.

**Row 1 (RS):** Bind off 6, cont as est'd to end – 56 (71, 86, 101) sts rem.

**WS Rows 2-8:** Cont as est'd to end.

**Row 3:** Bind off 4, cont as est'd to end – 52 (67, 82, 97) sts rem.

**Row 5:** Bind off 3, cont as est'd to end – 49 (64, 79, 94) sts rem.

**Row 7:** Bind off 2, cont as est'd to end – 47 (62, 77, 92) sts rem.

Cont even in patt until Left Front meas 2" from Neck bind-off. Place Left Front sts on holder.

### Back

Work as for Front until piece meas 22¾ (23, 23¼, 23½)" from cast-on edge, ending with a WS row.

**Row 1 (RS):** Cont as est'd over 62 (77, 92, 107) Right Back sts, bind off 42 Neck sts, cont as est'd over 62 (77, 92, 107) Left Back sts.

## FINISHING

Join Right Front and Right Back shoulders using the 3-ndl bind off. Join Left Front and Left back sts using the 3-ndl bind off. Block pieces to finished meas and weave in ends.

### Neck Edging

With smaller ndl and RS facing and beg at the Right Back, pick up and knit 42 Back Neck sts, 21 sts along Left Front Neck edge, 12 Front Neck sts, and 21 sts along the Right Front Neck edge – 96 sts. Distribute evenly on dpns.

PM and join to work in the rnd. Work in K1, P1 Rib for 1". Bind off all sts in patt.

### Button Band

#### Left Button Band

With smaller ndl and RS facing, beg at the bottom of the Left Front, pick up and knit 297 (301, 303, 307) sts.

Work in K1, P1 Rib for 5 rows, ending with a WS row.

**Buttonhole Row 1 (RS):** Cont as est'd over 44 (46, 48, 50) sts, [bind off 2 sts, cont as est'd over 10 sts] 2 times, bind off 2 sts, cont as est'd to end – 3 buttonholes.

**Buttonhole Row 2 (WS):** Cont as est'd to first Buttonhole [cast on 2 sts, cont as est'd over 10 sts] 2 times, cast on 2 sts, cont as est'd to end. Cont as est'd until Edging meas 1½" from picked up edge. Bind off all sts in patt.

## Knit, Relax, Smile, Repeat!

2018 © Universal Yarn, Inc.

All rights reserved.

[www.universalyarn.com](http://www.universalyarn.com)

This pattern may not be reproduced for business, trade or sale.

### Right Button Band

With smaller ndl and RS facing, beg at the bottom of Right Back, pick up and knit 297 (301, 303, 307) sts.

Work in K1, P1 Rib for 5 rows, ending with a WS row.

**Buttonhole Row 1 (RS):** Cont as est'd over 227 (228, 229, 230) sts, [bind off 2, cont as est'd over 10 sts] 2 times, bind off 2, cont as est'd to end.

**Buttonhole Row 2 (WS):** Cont as est'd to 1<sup>st</sup> Buttonhole, [cast on 2 sts, cont as est'd over 10 sts] 2 times, cast on 2 sts, cont as est'd to end. Cont as est'd until Edging meas 1½" from picked up edge. Bind off all sts in patt.

Weave in rem ends. Sew buttons opposite to button holes.

### Abbreviations

<b>beg</b>	begin(ning)
<b>cont</b>	continue
<b>dpn(s)</b>	double pointed needle(s)
<b>est'd</b>	established
<b>k</b>	knit
<b>k2tog</b>	knit 2 stitches together (1 st dec'd)
<b>m</b>	marker
<b>meas</b>	measures
<b>ndl</b>	needle
<b>p</b>	purl
<b>patt</b>	pattern
<b>pm</b>	place marker
<b>rem</b>	remain(ing)
<b>rep</b>	repeat
<b>RS</b>	right side
<b>sl</b>	slip
<b>st(s)</b>	stitch(es)
<b>tbl</b>	through the back loop(s)
<b>WS</b>	wrong side
<b>wyib</b>	with yarn held in back
<b>wyif</b>	with yarn held in front
<b>yo</b>	yarn over



**Knit, Relax, Smile, Repeat!**

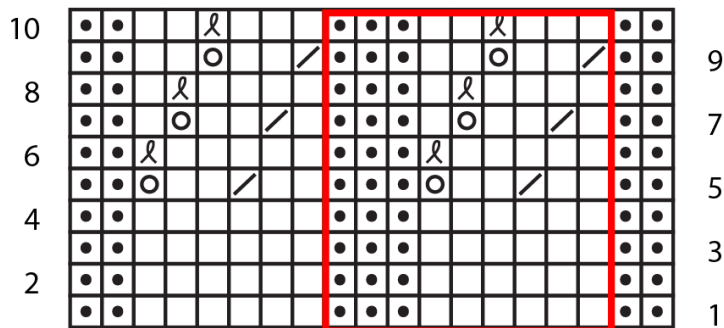
2018 © Universal Yarn, Inc.

All rights reserved.

[www.universalyarn.com](http://www.universalyarn.com)

This pattern may not be reproduced for business, trade or sale.

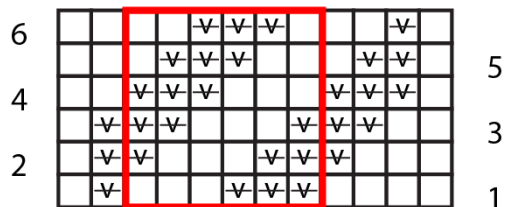
## Mock Cable Repeat



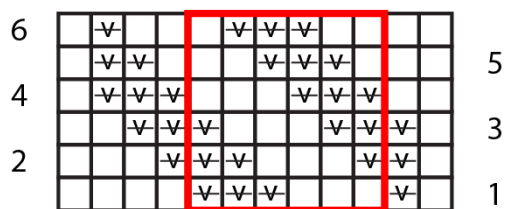
### Key

- purl on RS, knit on WS
- knit on RS, purl on WS
- k2tog
- yo
- knit tbl on RS, purl tbl on WS
- sl 1 wyif on RS, sl 1 wyib on WS
- pattern repeat

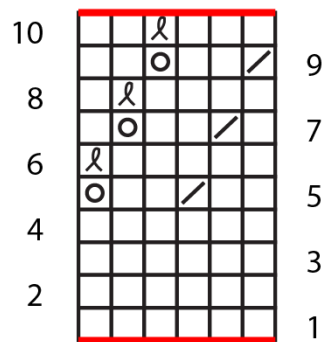
## Right Path



## Left Path



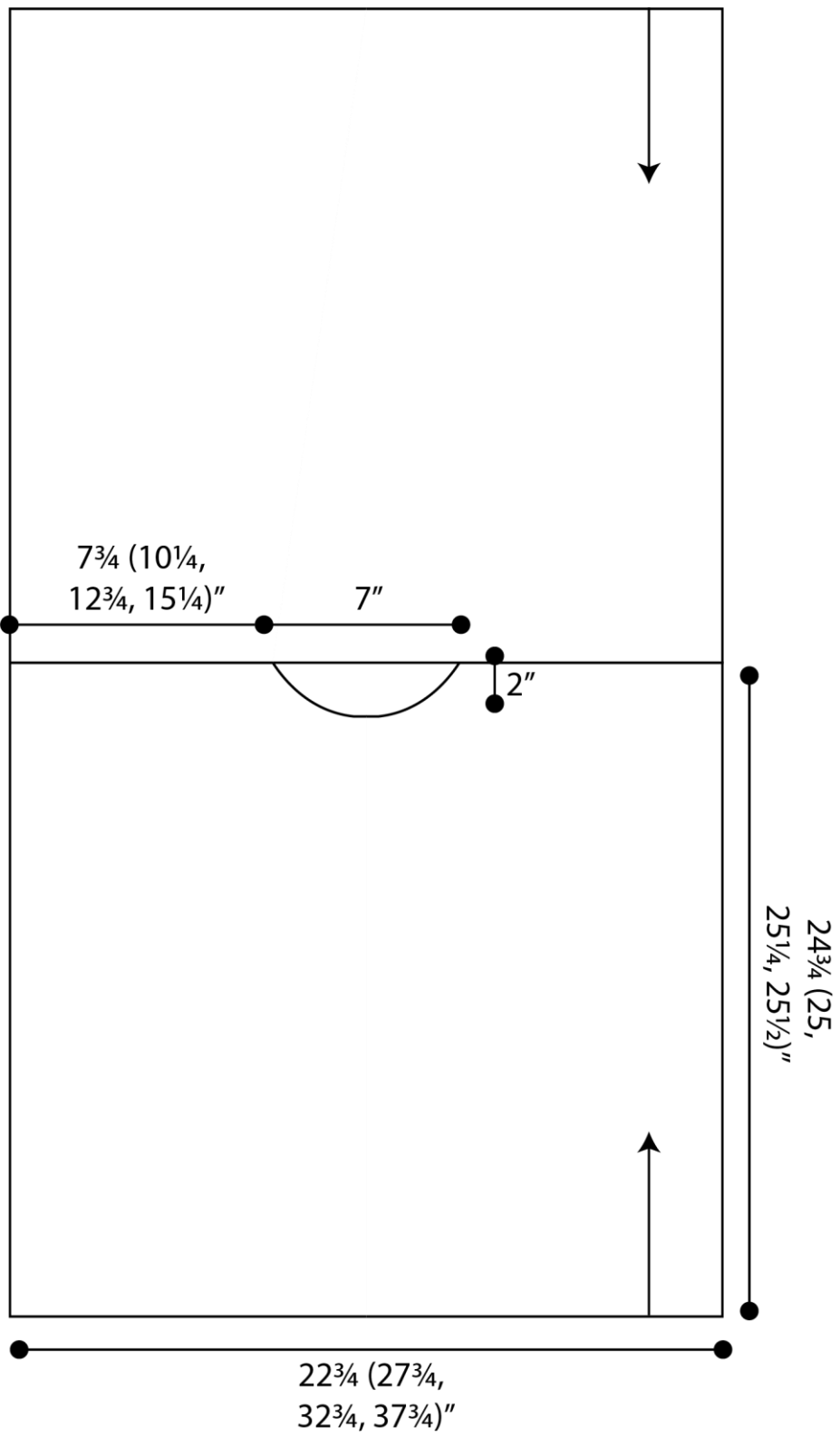
## Cable Panel



## Knit, Relax, Smile, Repeat!

2018 © Universal Yarn, Inc.  
All rights reserved.  
www.universalyarn.com

This pattern may not be reproduced for business, trade or sale.



**Knit, Relax, Smile, Repeat!**

2018 © Universal Yarn, Inc.  
 All rights reserved.  
[www.universalyarn.com](http://www.universalyarn.com)

This pattern may not be reproduced for business, trade or sale.