



PATTERN COLLECTION

Accessories



Palmer

Designed by Rachel Brockman

DIFFICULTY

Easy

SIZES

Small (Large)

FINISHED MEASUREMENTS

Length (excluding Fringe): 60 (80)"

Width: 9½ (9½)"

MATERIALS

Universal Yarn *Magnolia* (95% modal, 5% cashmere; 100g/361 yds)

Pink Version

- 105 Pamplemousse - 1 (2) skein(s)

Light Blue Version

- 109 Brunch - 1 (2) skein(s)

Dark Blue Version

- 110 Frayed Denim - 1 (2) skein(s)

Needles: US Size 7 (4.5 mm) straight needle for knitting flat) *or size needed to obtain gauge*

Notions: Tapestry needle, stitch markers, crochet hook (for attaching fringe)

GAUGE

20 sts x 24 rows = 4" in Arrowhead Lace patt

Save time, check your gauge.

Knit, Relax, Smile, Repeat!

2021 © Universal Yarn, Inc.

www.universalyarn.com

All rights reserved. This pattern may not be reproduced for business, trade or sale.

Questions? Contact patterns@universalyarn.com

PATTERN NOTES

Scarves are a perfect knitting 'playground' to try out new stitch patterns and techniques like lace. These ethereal looking stitches make for beautiful and lightweight three-season accessories you can pair with anything. Our Magnolia yarn is a stunning blend of modal and cashmere, with a smooth hand and light sheen, making it a great choice for dressed-up lace stitches. Palmer features garter rows and eyelets on each end of the scarf, with a beautiful lace motif repeated throughout the main fabric.

This scarf is knit flat from the bottom up. Each end features rows of garter stitch broken up with eyelets. The main fabric features an all-over lace motif bordered by garter stitch on each side. Fringe is attached to each end during finishing.

STITCH GUIDE

Arrowhead Lace

(multiple of 10 sts, plus 1)

Row 1 (RS): K1, * [yo, ssk] 2 times, k1, [k2tog, yo] 2 times, k1; rep from * to end.

Row 2 (WS): Purl.

Row 3: K1, * k1, yo, ssk, yo, S2KP2, yo, k2tog, yo, k2; rep from * to end.

Row 4: Purl.

Rep Rows 1-4 for patt.

PATTERN BEGINS

SCARF

Lower Border

Cast on 47 sts.

Row 1 (RS): Knit.

Row 2 (WS): Knit.

Row 3: K4, * yo, k2tog; rep from * to last 3 sts, k3.

Row 4: Knit.

Rows 5-12: Rep Rows 1-4, 2 times.

Rows 13-14: Knit.

Main Fabric

Row 1 (RS): K3, pm, work Row 1 of Arrowhead Lace to last 3 sts, pm, k3.

Row 2 (WS): K3, sl m, work Row 2 of Arrowhead Lace to m, sl m, k3.

Row 3: K3, sl m, work Row 3 of Arrowhead Lace to m, sl m, k3.

Row 4: K3, sl m, work Row 4 of Arrowhead Lace to m, sl m, k3.

Rep Rows 1-4 of until piece meas approx. 58 (78)" from cast-on edge, ending with Row 4 of patt.



Upper Border

Work as for Lower Border. Piece meas approx. 60 (80)" from cast-on edge.

Loosely bind off all sts kwise.

FINISHING

Weave in ends but do not trim. Wet or steam block, stretching to enhance lace. Once piece is fully dry, trim ends close to work.

Fringe

Cut 184, 9" strands of yarn. Holding 4 strands together as 1 group, attach 23 groups evenly across each end (approx. 1 group every $\frac{1}{4}$ - $\frac{1}{2}$ "). Trim fringe to 4".

Knit, Relax, Smile, Repeat!

2021 © Universal Yarn, Inc.

www.universalyarn.com

All rights reserved. This pattern may not be reproduced for business, trade or sale.

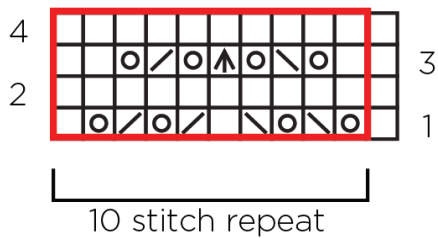
Questions? Contact patterns@universalyarn.com

Abbreviations

approx	approximately
garter st	knit every row
k	knit
k2tog	knit 2 stitches together (1 st dec'd)
kwise	knitwise
m	marker
meas	measures
ndl	needle
p	purl
patt	pattern
pm	place marker
rep	repeat
RS	right side
S2KP2	slip 2 stitches as if to knit 2 together, knit 1, pass 2 slipped stitches over knit stitch; centered double decreases
sl	slip
ssk	slip next 2 sts individually knitwise, slip them back to left needle in this position, knit them together through the back loops (1 st dec'd)
st(s)	stitch(es)
WS	wrong side
yo	yarn over



Arrowhead Lace



Key

	pattern repeat		ssk
	knit on RS, purl on WS		k2tog
	purl on RS, knit on WS		S2KP2
	yo		

Knit, Relax, Smile, Repeat!

2021 © Universal Yarn, Inc.

www.universalyarn.com

All rights reserved. This pattern may not be reproduced for business, trade or sale.

Questions? Contact patterns@universalyarn.com