



PATTERN COLLECTION

Accessories



Painterly Shawl

Designed by Rachel Brockman

DIFFICULTY

Easy

SIZES

One Size

FINISHED MEASUREMENTS

Wingspan: 61"

Depth at Center: 30½"

MATERIALS

[Universal Yarn Cassatt](#) (35% baby alpaca, 35% wool, 20% nylon, 10% viscose; 50g/120 yds)

- 602 Haystacks - 4 balls

Needles: US Size 9 (5.5 mm) 32" circular or longer (to accommodate large number of sts) or size needed to obtain gauge

US Size 10 (6 mm) circular or DPNs (for I-Cord bind-off)

Notions: Tapestry needle, stitch markers

GAUGE

13 sts x 15 rows = 4" in Texture patt

Save time, check your gauge.

Knit, Relax, Smile, Repeat!

2022 © Universal Yarn, Inc.

www.universalyarn.com

All rights reserved. This pattern may not be reproduced for business, trade or sale.

Questions? Contact patterns@universalyarn.com

PATTERN NOTES

The Painterly Shawl was inspired by the brushstrokes of Impressionist painters – known for their emphasis on light and color. Our beautiful Cassatt yarn features speckles and tweedy nubs, nodding to the brushstrokes of these artists. Let this yarn shine in this gorgeous triangular shawl. It features a rhythmic, simple stitch pattern and lovely details including right and left twists and an I-Cord bind-off. Channel your inner artist while knitting this shawl!

This shawl is knit flat from the top down and begins with a garter tab cast-on. Four stitches are increased every Right Ride (RS) row.

I-Cord Bind-Off

Cast on 3 sts to first st on left ndl using knitted cast-on. * K2, k2tog tbl (1 st bound off), slip these 3 sts back to left ndl; rep from * until all sts have been bound off. Bind off rem 3 I-Cord sts.

STITCH GUIDE

Right Twist (RT): K2tog but do not slip st from ndl, knit the first st again, slip both sts from ndl.

Left Twist (LT): Knit the second st on the left ndl through the back loop, knit the first st through the front loop, slip both sts from ndl.

Texture

(multiple of 4 sts)

Row 1 (RS): Knit.

Row 2 (WS): * K3, p1; rep from * to end.

Row 3: Knit.

Row 4: Rep Row 2.

Row 5: Knit.

Row 6: * K1, p1, k2; rep from * to end.

Row 7: Knit.

Row 8: Rep Row 6.

Rep Rows 1-8 for patt.

SHAWL

Starting Tab

Cast on 4 sts. Knit 14 rows in garter st.

Set-up Row (WS): K4, rotate work 90 degrees, pick up and knit 6 sts from side of Tab, pick up and knit 4 sts from cast-on edge – 14 sts.

Main Shawl

Set-up Row 1 (RS): K1, RT, pm, yo, k2, yo, pm, RT, LT, pm, yo, k2, yo, pm, LT, k1 – 4 sts inc'd, 18 sts.

Set-up Row 2 (WS): K1, p2, sl m, purl to m, sl m, p4, sl m, purl to m, sl m, p2, k1.

Row 1: K1, RT, sl m, yo, knit to m, yo, sl m, RT, LT, sl m, yo, knit to m, yo, sl m, LT, k1 – 4 sts inc'd, 22 sts.

Row 2: K1, p2, sl m, k1, * p1, k3; rep from * to 1 st bef m, p1, sl m, p4, sl m, p1, * k3, p1; rep from * to 1 st bef m, k1, sl m, p2, k1.

Row 3: Rep Row 1 – 4 sts inc'd, 26 sts.

Row 4: K1, p2, sl m, k2, * p1, k3; rep from * to 2 sts bef m, p1, k1, sl m, p4, sl m, k1, p1, * k3, p1; rep from * to 2 sts bef m, k2, sl m, p2, k1.

Row 5: Rep Row 1 – 4 sts inc'd, 30 sts.

Row 6: K1, p2, * k1, p1, k1, * k2, p1, k1; rep from * to 3 sts bef m, k2, p1, sl m, p4, sl m, p1, k2, * k1, p1, k2; rep from * to 3 sts bef m, k1, p1, k1, sl m, p2, k1.

Row 7: Rep Row 1 – 4 sts inc'd, 34 sts.

Row 8: K1, p2, sl m, * k2, p1, k1; rep from * to m, sl m, p4, sl m, * k1, p1, k2; rep from * to m, sl m, p2, k1.

Rep Rows 1-8, 13 more times, then rep Rows 1-5, 1 more time – 220 sts inc'd, 254 sts.

Change to larger ndl. Bind off all sts using the I-Cord method.

Abbreviations

bef	before
circ	circular
cont	continue
garter st	knit every row
inc('d)	increase(d)
k	knit
m	marker
meas	measures
ndl	needle
p	purl
patt	pattern
pm	place marker
rep	repeat
RS	right side
sl	slip
st(s)	stitch(es)
tbl	through back loop
WS	wrong side
yo	yarn over

Knit, Relax, Smile, Repeat!

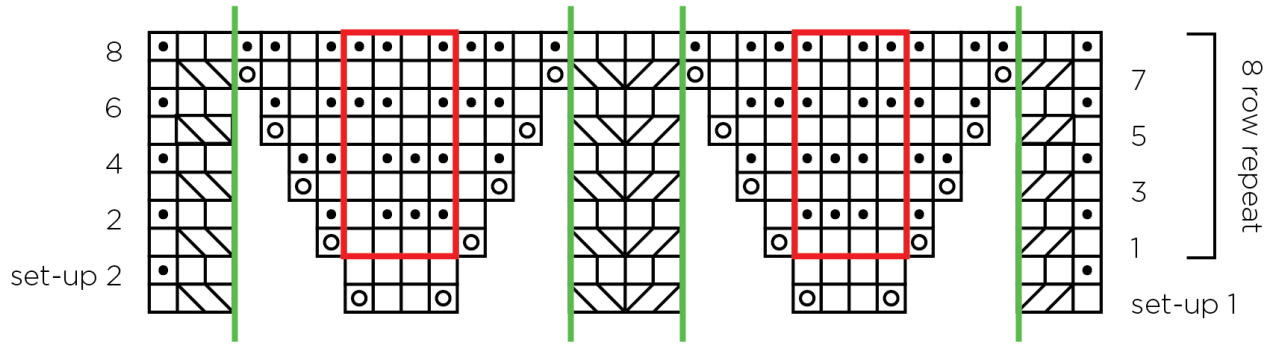
2022 © Universal Yarn, Inc.

www.universalyarn.com







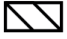
All rights reserved. This pattern may not be reproduced for business, trade or sale.

Questions? Contact patterns@universalyarn.com

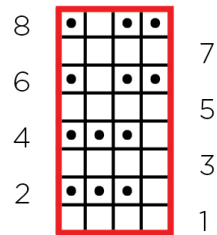
Shawl



Key

-  indicates marker
-  pattern repeat
-  knit on RS, purl on WS
-  purl on RS, knit on WS
-  yo
-  RT
-  LT

Texture



Knit, Relax, Smile, Repeat!

2022 © Universal Yarn, Inc.

www.universalyarn.com

All rights reserved. This pattern may not be reproduced for business, trade or sale.

Questions? Contact patterns@universalyarn.com