



Pattern Collection: Accessories



Olive

Designed by Rachel Brockman

DIFFICULTY

Easy

SIZES

Adult Medium

FINISHED MEASUREMENTS

Brim Circumference: 19½"

Length: 9"

MATERIALS

Universal Yarn *Penna* (50% baby suri alpaca, 28% extrafine merino, 22% nylon; 25g/186 yds)

- 103 Smudge (A) – 1 ball

Fibra Natura *Kingston Tweed* (50% wool, 25% alpaca, 25% viscose; 50g/194 yds; 50g/230 yds)

- 106 Olivine (B) – 1 skein

Needles: US Size 6 (4 mm) straight, 16" circular, and DPNs (or your preferred needle for knitting small circumferences)

Notions: Tapestry needle, cable needle, stitch markers, stitch holder or waste yarn

GAUGE

26 sts x 33 rows = 4" in Cable Panel patt with A and B held together as one strand
23 sts x 32 rnds = 4" in Broken Rib with A and B held together as one strand

Knit. Relax. Smile. Repeat!

2020 © Universal Yarn, Inc.

All rights reserved.

www.universalyarn.com

This pattern may not be reproduced for business, trade or sale.

PATTERN NOTES

Beautiful accessories often begin with beautiful yarns. Kingston Tweed provides an earthy feel and lovely tweedy nubs, and Penna offers a light, airy, halo you'll fall in love with. When held together, these two are a textural dream. The Olive Hat's braid style cable brim and broken rib body accentuate that lovely texture to it's fullest. It'll keep you toasty warm too!

This hat begins with a cable panel that is worked flat. After the correct length is achieved, each end is sewn together. Then stitches are picked up around one edge and worked in the round, decreasing to the crown.

STITCH GUIDE

3x3 Left Cross (LC)

Slip 3 sts to cn and hold in front, k3 from LH ndl, k3 from cn.

3x3 Right Cross (RC)

Slip 3 sts to cn and hold in back, k3 from LH ndl, k3 from cn.

Broken Rib

(even number of sts)

Rnd 1: Knit.

Rnd 2: * P1, k1; rep from * to end.

Rep Rnds 1-2 for patt.

Cable Panel

(panel of 24 sts)

Row 1 (RS): K2, p1, k17, p1, k3.

Row 2 (WS): P2, k1, p1, k1, p6, k1, p1, k1, p6, [k1, p1] 2 times.

Rows 3-4: Rep Rows 1-2.

Row 5: K2, p1, k1, 3x3 RC, k3, 3x3 LC, k1, p1, k3.

Row 6: Rep Row 2.

Rep Rows 1-6 for patt.

Brim

With straight ndl, cast on 24 sts.

Row 1 (RS): Work Row 1 of Cable Panel to end.

Row 2 (WS): Work Row 2 of Cable Panel to end.

Cont as est'd through Row 6 of Cable Panel, then rep Rows 1-6 of patt, 26 more times, or until

piece meas approx. 19½" from cast-on edge. Bind off all sts.

Sew cast-on and bind-off edge of Brim together using mattress stitch.

Note: The left side of the panel, where there are 2 stitches maintained in St st, is considered the top of the Brim.

Main Hat

Beg at seam, with 16" circ ndl, pick up and knit 112 sts evenly around the top circumference of Brim, picking up from the left. PM and join in the rnd.

Work in Broken Rib until piece meas 2½" from picked up edge, or approx. 6¼" from bottom of Brim, ending with Rnd 2 of patt.

Shape Crown

Note: Change to dpns when there are too few sts to fit comfortably on 16" circular ndl.

Set-up Rnd: [Cont as est'd over 16 sts, pm] 7 times.

Dec Rnd: * Cont as est'd to 2 sts bef m, k2tog, sl m; rep from * to end – 7 sts dec'd, 105 sts rem.

Even Rnd: Cont as est'd to end.

Rep Dec Rnd and Even Rnd, 5 more times – 70 sts rem.

Rep Dec Rnd every rnd, 8 times – 56 sts dec'd, 14 sts rem.

Next Rnd: * K2tog; rep from * to end – 7 sts dec'd, 7 sts rem.

Break yarn leaving approx. 8" tail. Thread tail through rem live sts. Pull taut to close.

FINISHING

Gently wash and block to finished measurements. Weave in ends.

Knit. Relax. Smile. Repeat!

2020 © Universal Yarn, Inc.

All rights reserved.

www.universalyarn.com

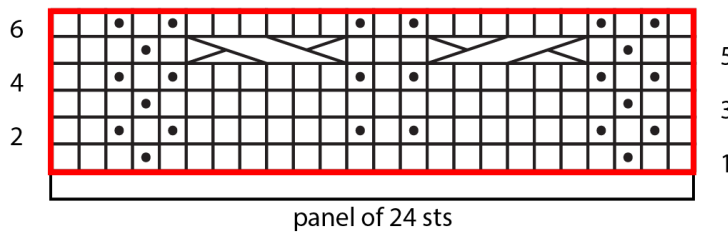
This pattern may not be reproduced for business, trade or sale.

Abbreviations

approx	approximately
bef	before
beg	begin(ning)
circ	circular
cn	cable needle
cont	continue
dec('d)	decrease(d)
est'd	established
k	knit
k2tog	knit 2 stitches together (1 st)
dec'd)	
LC	left cross
LH	left hand
m	marker
meas	measures
ndl	needle
p	purl
patt	pattern

pm	place marker
RC	right cross
rem	remain(ing)
rep	repeat
rnd	round
RS	right side
sl	slip
St st	Stockinette stitch (knit on RS rows, purl on WS rows; in the rnd, knit every rnd)
st(s)	stitch(es)
WS	wrong side

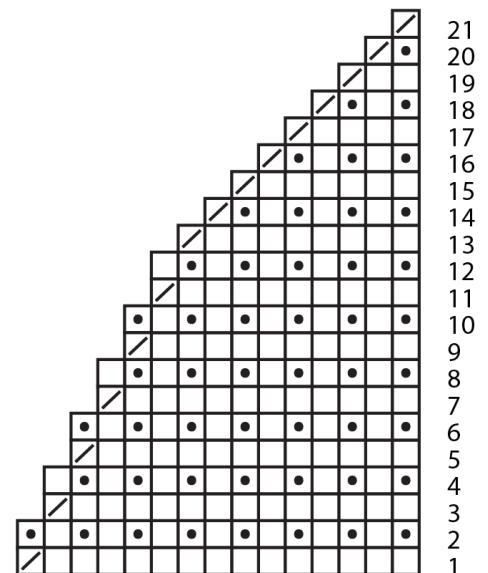
Cable Panel



panel of 24 sts

- pattern repeat
 - knit on RS, purl on WS
 - purl on RS, knit on WS
- 3x3 RC
 3x3 LC

Crown



Knit. Relax. Smile. Repeat!

2020 © Universal Yarn, Inc.

All rights reserved.

www.universalyarn.com

This pattern may not be reproduced for business, trade or sale.