



PATTERN COLLECTION

Accessories



North Shore Cowl

Designed by Patty Olson

DIFFICULTY

Easy

SIZES

One Size

FINISHED MEASUREMENTS

Circumference: 42"

Height (at tallest points): 7"

Height (at narrowest points): 6"

MATERIALS

[Universal Yarn Be Wool Multis](#) (60% acrylic, 40% wool; 170g/80 yds)

- 208 Monsoon - 2 balls

Needles: US Size 11 (8 mm) 24-32"

circular or size needed to obtain gauge

Notions: Tapestry needle, stitch markers

GAUGE

9.25 sts x 18 rnds = 4" in Bow Tie patt

Save time, check your gauge.

Knit, Relax, Smile, Repeat!

2022 © Universal Yarn, Inc.

www.universalyarn.com

All rights reserved. This pattern may not be reproduced for business, trade or sale.

Questions? Contact patterns@universalyarn.com

PATTERN NOTES

The North Shore Cowl is a beautifully textured cowl knit in super bulky Be Wool Multis. This quick project is soft, springy, and features splashes of gorgeous color. The purlled “bow tie” effect is created with deceptively simple Long Stitches. This stitch also gives the edges of the cowl an undulating effect, mimicking the flow of cool ocean waters kissing the shore.

This cowl is knit in the round from the bottom up and features a Bow Tie pattern throughout. We recommend placing markers between each pattern repeat to help you stay on track. You may also wish to use a unique stitch marker to denote the beginning of the round.

STITCH GUIDE

Long Stitch

Insert RH ndl into the indicated stitch 8 rnds below, drawing up a long loop; transfer the loop onto LH ndl and knit it together with the next stitch on the ndl.

Bow Tie

(multiple of 14 sts)

Rnds 1-2: * K7, p7; rep from * to end.

Rnd 3-6: Knit.

Rnds 7-8: * K7, p7; rep from * to end.

Rnd 9: * K10, Long Stitch, k3; rep from * to end.

Rnd 10: Knit.

Rnds 11-12: * P7, k7; rep from * to end.

Rnds 13-16: Knit.

Rnds 17-18: * P7, k7; rep from * to end.

Rnd 19: * K3, Long Stitch, k10; rep from * to end.

Rnd 20: Knit.

Rep Rnds 1-20 for patt.

PATTERN BEGINS

COWL

Note: You may wish to place markers between each pattern repeat to help you stay on track.

Cast on 98 sts. PM and join to knit in the rnd, being careful not to twist.

Work Rnds 1-20 of Bow Tie patt one time, then rep Rnds 1-10, one more time. Bow Tie patt will be repeated 7 times across each rnd.

Bind off all sts kwise.

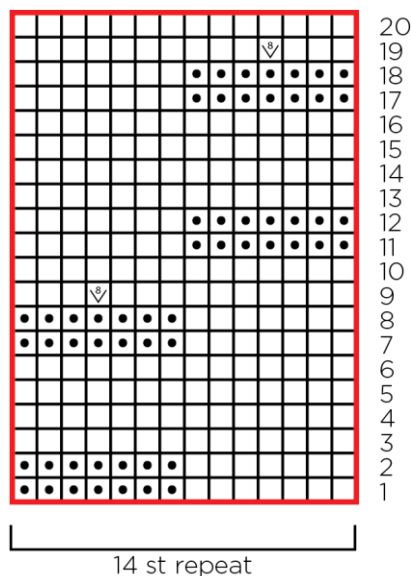
FINISHING

Gently wash and block to finished measurements. Weave in ends.

Abbreviations

k	knit
kwise	knitwise
LH	left hand
m	marker
ndl	needle
p	purl
patt	pattern
pm	place marker
rep	repeat
RH	right hand
rnd	round
st(s)	stitch(es)

Bow Tie



Key

	pattern repeat
	knit
	purl
	Long Stitch

Knit, Relax, Smile, Repeat!

2022 © Universal Yarn, Inc.

www.universalyarn.com

All rights reserved. This pattern may not be reproduced for business, trade or sale.

Questions? Contact patterns@universalyarn.com