



## Pattern Collection: Accessories



### North Window Stole

Designed by Universal Design Team

#### SIZES

One Size

#### FINISHED MEASUREMENTS

**Width:** 23"

**Length:** 64"

#### MATERIALS

**Universal Yarn Universe** (42% linen, 41% cotton, 9% glitter, 8% polyamide;  
50g/246 yds)

10-08 Bronze – 5 skeins

**Hook:** C-2 (2.75 mm) *or size needed to obtain gauge*

**Notions:** Tapestry needle

#### GAUGE

1 rep = 1 1/4" wide in Mesh patt.

**Save time, check your gauge.**

*Knit. Relax. Smile. Repeat!*

2017 © Universal Yarn, Inc.

All rights reserved.

[www.universalyarn.com](http://www.universalyarn.com)

This pattern may not be reproduced for business, trade or sale.

## STITCH GUIDE

**V-St:** [Dc, ch 5, dc] in st or sp indicated.

**Picot:** [Ch 3, sl st] in st or sp indicated.

**2Dccl:** [Yo and insert hk into sp and pull through a lp, pull through 2 lps] 2 times, yo and pull through rem lps on hk.

## Mesh

*(begins with multiple of 10 chs + 6)*

**Row 1:** Dc in sixth ch from hk, ch 3, sk next 4 chs, [sc in next ch, ch 3, sk next 4 chs, ch 3, V-St in next ch, sk next 4 chs] to last 6 chs, sc in next ch, ch 3, sk next 4 chs, [dc, ch 2, dc] in last ch, turn.

**Row 2:** Sc in first dc, ch 3, [V-st in next sc, ch 3, sc in next V-st, ch 3] to last sc, V-st in last sc, ch 3, sc in third ch of 5, turn.

**Row 3:** Ch 5 (counts as dc + ch 2), dc in same sc, ch 3, [sc in next V-st, ch 3, V-st in next sc, ch 3] to last V-st, sc in last V-st, ch 3, [dc, ch 2, dc] in last sc, turn.

Rep Rows 1-3 for patt.

## STOLE

Ch 186. Work in Mesh patt until piece meas 60", ending with Row 2 of patt. Patt will be repeated 18 times across each row.

## Ending Border

**Row 1:** Ch 3 (counts as dc), dc in same dc, ch 3, {sc in next sc, ch 10, sk next V-st, sc in next sc, ch 3, [dc, ch 1, dc] in next V-st, ch 3} 8 times, sc in next sc, ch 10, sk next V-st, sc in next sc, ch 3, 2 dc in last dc, turn.

**Row 2:** Ch 4 (counts as dc + ch 1), dc in same dc, ch 2, 13 dc in ch-10 sp, {ch 2, [dc, ch 2, dc] in ch-1 sp, ch 2, 13 dc in ch-10 sp} 8 times, ch 2, [dc, ch 1, dc] in last dc, turn.

**Row 3:** Ch 3 (counts as dc), dc in ch-1 sp, sk next dc and ch-2 sp, ch 3, {[sc in next dc, ch 4, sk next 2 dc] 4 times, sc in next dc, ch 3, sk next ch-2 sp, 3 dc in next ch-2 sp, ch 3, sk next ch-2 sp} 8 times, [sc in next dc, ch 4, sk next 2 dc] 4 times, sc in next dc, ch 3, sk next ch-2 sp, dc in ch-1 sp, dc in last dc, turn.

**Row 4:** Ch 4 (counts as dc + ch 1), dc in same dc, dc in next dc, ch 3, [sc in next ch-4 sp, ch 4] 3 times, sc in next ch-4 sp, {ch 3, dc in next dc, [dc,

ch 3, dc] in next dc, dc in next dc, ch 3, [sc in next ch-4 sp, ch 4] 3 times, sc in next ch-4 sp} 8 times, ch 3, dc in next dc, [dc, ch 1, dc] in last dc, turn.

**Row 5:** Sc in first dc, ch 5, dc in next 2 dc, ch 3, {[sc in next ch-4 sp, ch 4] 2 times, sc in next ch-4 sp, ch 3, dc in next 2 dc, ch 5, sc in ch-3 sp, dc in next 2 dc, ch 3} 8 times, [sc in next ch-4 sp, ch 4] 2 times, sc in next ch-4 sp, ch 3, dc in next 2 dc, ch 5, sc in last dc, turn.

**Row 6:** Sc in first sc, 3 sc in ch-5 sp, ch 5, dc in next 2 dc, ch 3, sc in ch-4 sp, ch 4, sc in ch-4 sp, [ch 3, dc in next 2 dc, ch 5, 3 sc in ch-5 sp, sc in sc, 3 sc in ch-5 sp, ch 5, dc in next 2 dc, ch 3, sc in ch-4 sp, ch 4, sc in ch-4 sp] 8 times, ch 3, dc in next 2 dc, ch 5, 3 sc in ch-5 sp, sc in last sc, turn.

**Row 7:** Ch 6 (counts as dc + ch 3), sc in ch-5 sp, ch 5, dc in next 2 dc, ch 3, [sc in ch-4 sp, ch 3, dc in next 2 dc, ch 5, sc in ch-5 sp, ch 7, sc in ch-5 sp, ch 5, dc in next 2 dc, ch 3] 8 times, sc in ch-4 sp, ch 3, dc in next 2 dc, ch 5, sc in ch-5 sp, ch 3, dc in last sc, turn.

**Row 8:** Ch 3, dc in same st, Picot, ch 1, [2Dccl, Picot, ch 1] 2 times in ch-3 sp, sc in ch-5 sp, ch 3, dc in next 2 dc, {Picot, dc in next 2 dc, ch 3, sc in ch-5 sp, [ch 1, 2Dccl, Picot, ch 1] 5 times in ch-7 sp, ch 1, sc in ch-5 sp, ch 3, dc in next 2 dc} 8 times, Picot, dc in next 2 dc, ch 3, sc in ch-5 sp, ch 1, [2Dccl, Picot, ch 1] 2 times in ch-3 sp, 2Dccl in last dc, Picot. Fasten off.

## Beginning Border

Working into beg-ch edge, rep Rows 1-8 as for Ending Border.

## FINISHING

Weave in ends. Wet or steam block, pinning out edges to fully open up lace.

*Knit. Relax. Smile. Repeat!*

2017 © Universal Yarn, Inc.

All rights reserved.

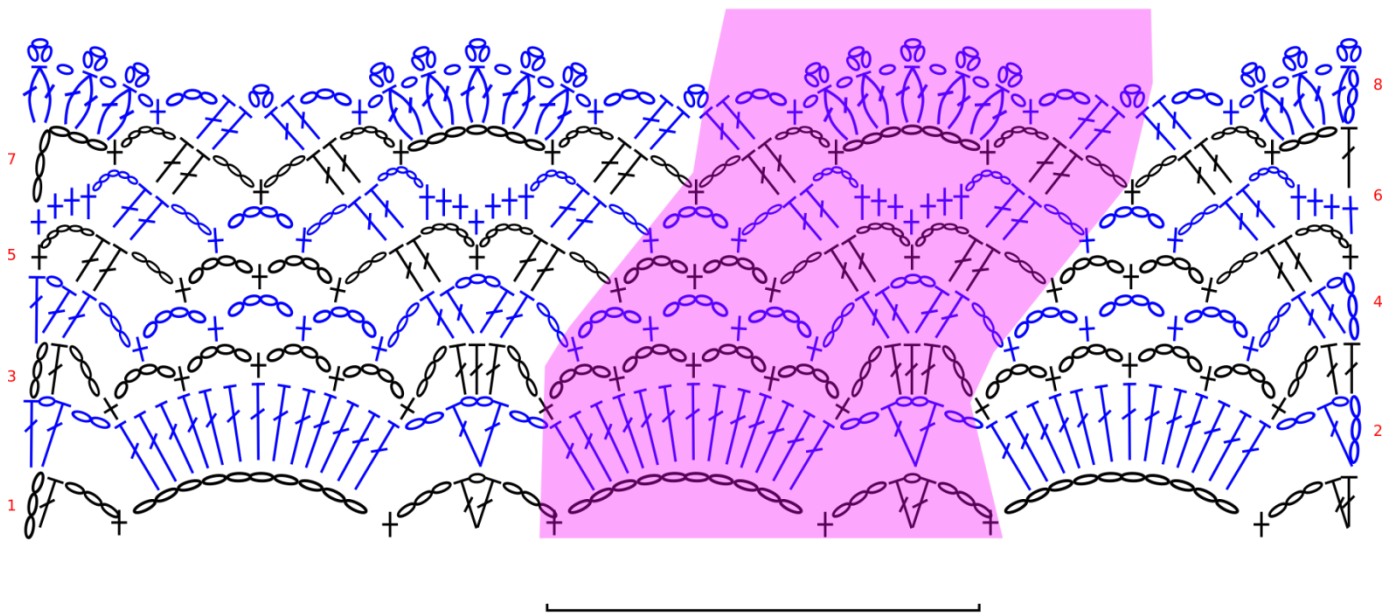
[www.universalyarn.com](http://www.universalyarn.com)

This pattern may not be reproduced for business, trade or sale.

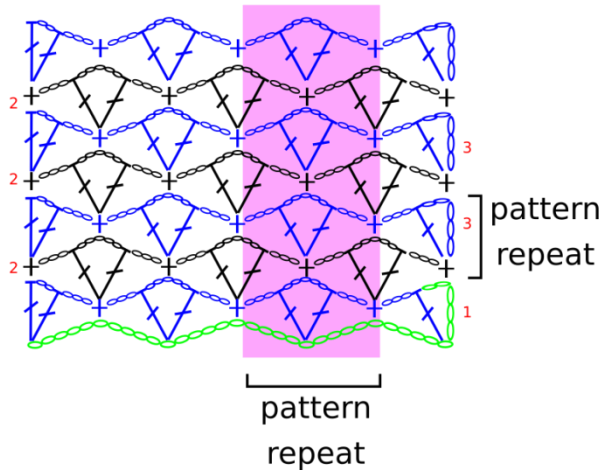
**Abbreviations**

<b>ch</b>	chain
<b>dc</b>	double crocheted
<b>dccl</b>	double crochet cluster
<b>hk</b>	hook
<b>meas</b>	measure(s)
<b>patt</b>	pattern
<b>sc</b>	single crocheted
<b>sk</b>	skip
<b>sl st</b>	slip stitch
<b>sp</b>	space
<b>st</b>	stitch(es)
<b>yo</b>	yarn over

**Border**



**Mesh**



pattern  
repeat

**Key**

- ch
- + sc
- ⌋ dc
- ∩ V-st
- ⌋ 2Dccl
- ⊗ Picot

***Knit, Relax, Smile, Repeat!***

2017 © Universal Yarn, Inc.

All rights reserved.

[www.universalyarn.com](http://www.universalyarn.com)

This pattern may not be reproduced for business, trade or sale.