



Pattern Collection: Accessories



Mountain Lights Shawl

Designed by Universal Yarn Design Team

FINISHED MEASUREMENTS

Wingspan: 45"

Depth in Center: 22"

MATERIALS

Universal Yarn *Deluxe Worsted Superwash* (100% superwash wool; 100g/218 yd)

- 764 Violet Rustic (A) – 1 ball
- 749 Smoke Heather (B) – 1 ball

Needles: US Size 8 (5 mm) 32" circular (or longer) *or size needed to obtain gauge*

Notions: Tapestry needle, stitch markers, two US Size 8 (5 mm) dpns

GAUGE

18 sts x 24 rows = 4" in Shawl Body patt

Save time, check your gauge.

Knit. Relax. Smile. Repeat!

2019 © Universal Yarn, Inc.

All rights reserved.

www.universalyarn.com

This pattern may not be reproduced for business, trade or sale.

PATTERN NOTES

Mountain Lights features a lace border in an electrifying color, balanced out by a neutral, textured body. This shawl begins with the Diamond Edging lower border which is worked sideways. Stitches are picked up from the side of the edging, and the shawl body is knit upward.

The shawl pin shown is the [Alhambra Lace Pin by Jul Designs](#).

W&T: Wrap and Turn. To wrap a stitch on RS rows, bring the yarn to the front of the work, slip the next st purlwise to the RH ndl, take the yarn to the back of the work, slip the st back to the left ndl, turn. To wrap a stitch on WS rows, take the yarn to the back of the work, slip the next st purlwise to the RH ndl, bring the yarn to the front of the work, slip the st back to the left ndl, bring the yarn to the front of the work, turn.

STITCH GUIDE

Seed (worked over 3 sts): K3tog but do not remove sts from left ndl, knit first st again, knit rem 2 sts tog, drop original sts from left ndl – 3 sts from 3 sts.

SHAWL

Diamond Edging

With A, cast on 26 sts.

Set-up row (WS): Knit.

Note: Diamond Edging is also charted for your convenience.

Row 1 (RS): K2, yo, k2tog, k19, yo, k1, k2tog.

Row 2 (WS): Yo, k2, p1, knit to end – 1 st inc'd, 27 sts.

Row 3: K2, yo, k2tog, k18, yo, k2tog, yo, k1, k2tog.

Row 4: Yo, k2, p3, knit to end – 1 st inc'd, 28 sts.

Row 5: K2, yo, k2tog, k17, [yo, k2tog] 2 times, yo, k1, k2tog.

Row 6: Yo, k2, p5, knit to end – 1 st inc'd, 29 sts.

Row 7: K2, yo, k2tog, k16, [yo, k2tog] 3 times, yo, k1, k2tog.

Row 8: Yo, k2, p7, knit to end – 1 st inc'd, 30 sts.

Row 9: K2, yo, k2tog, k15, [yo, k2tog] 4 times, yo, k1, k2tog.

Row 10: Yo, k2, p9, knit to end – 1 st inc'd, 31 sts.

Row 11: K2, yo, k2tog, k14, [yo, k2tog] 5 times, yo, k1, k2tog.

Row 12: Yo, k2, p11, knit to end – 1 st inc'd, 32 sts.

Row 13: K2, yo, k2tog, k13, [yo, k2tog] 6 times, yo, k1, k2tog.

Row 14: Yo, k2, p13, knit to end – 1 st inc'd, 33 sts.

Row 15: K2, yo, k2tog, k12, [yo, k2tog] 7 times, yo, k1, k2tog.

Row 16: Yo, k2, p15, knit to end – 1 st inc'd, 34 sts.

Row 17: K2, yo, k2tog, k11, [yo, k2tog] 8 times, yo, k1, k2tog.

Row 18: Yo, k2, p17, knit to end – 1 st inc'd, 35 sts.

Row 19: K2, yo, k2tog, k10, [yo, k2tog] 9 times, yo, k1, k2tog.

Row 20: Yo, k2, p19, knit to end – 1 st inc'd, 36 sts.

Row 21: K2, yo, k2tog, k9, [yo, k2tog] 10 times, yo, k1, k2tog.

Row 22: Yo, k2, p21, knit to end – 1 st inc'd, 37 sts.

Row 23: K2, yo, k2tog, k8, [yo, k2tog] 11 times, yo, k1, k2tog.

Row 24: Yo, k2, p23, knit to end – 1 st inc'd, 38 sts.

Row 25: K2, yo, k2tog, k8, [k2tog, yo] 11 times, [k2tog] 2 times – 2 sts dec'd, 36 sts rem.

Row 26: Yo, k2, p21, knit to end – 1 st inc'd, 37 sts.

Row 27: K2, yo, k2tog, k9, [k2tog, yo] 10 times, [k2tog] 2 times – 2 sts dec'd, 35 sts rem.

Row 28: Yo, k2, p19, knit to end – 1 st inc'd, 36 sts.

Row 29: K2, yo, k2tog, k10, [k2tog, yo] 9 times, [k2tog] 2 times – 2 sts dec'd, 34 sts rem.

Row 30: Yo, k2, p17, knit to end 1 st inc'd, 35 sts.

Row 31: K2, yo, k2tog, k11, [k2tog, yo] 8 times, [k2tog] 2 times – 2 sts dec'd, 33 sts rem.

Row 32: Yo, k2, p15, knit to end 1 st inc'd, 34 sts.

Row 33: K2, yo, k2tog, k12, [k2tog, yo] 7 times, [k2tog] 2 times – 2 sts dec'd, 32 sts rem.

Row 34: Yo, k2, p13, knit to end – 1 st inc'd, 33 sts.

Knit. Relax. Smile. Repeat!

2019 © Universal Yarn, Inc.

All rights reserved.

www.universalyarn.com

This pattern may not be reproduced for business, trade or sale.

Row 35: K2, yo, k2tog, k13, [k2tog, yo] 6 times, [k2tog] 2 times – 2 sts dec'd, 31 sts rem.
Row 36: Yo, k2, p11, knit to end – 1 st inc'd, 32 sts.
Row 37: K2, yo, k2tog, k14, [k2tog, yo] 5 times, [k2tog] 2 times – 2 sts dec'd, 30 sts rem.
Row 38: Yo, k2, p9, knit to end – 1 st inc'd, 30 sts.
Row 39: K2, yo, k2tog, k15, [k2tog, yo] 4 times, [k2tog] 2 times – 2 sts dec'd, 29 sts rem.
Row 40: Yo, k2, p7, knit to end – 1 st inc'd, 30 sts.
Row 41: K2, yo, k2tog, k16, [k2tog, yo] 3 times, [k2tog] 2 times – 2 sts dec'd, 28 sts rem.
Row 42: Yo, k2, p5, knit to end – 1 st inc'd, 29 sts.
Row 43: K2, yo, k2tog, k17, [k2tog, yo] 2 times, [k2tog] 2 times – 2 sts dec'd, 27 sts rem.
Row 44: Yo, k2, p3, knit to end – 1 st inc'd, 28 sts.
Row 45: K2, yo, k2tog, k18, k2tog, yo, [k2tog] 2 times – 2 sts dec'd, 26 sts rem.
Row 46: Yo, k2, p1, knit to end – 1 st inc'd, 27 sts.
Row 47: K2, yo, k2tog, k19, [k2tog] 2 times – 2 sts dec'd, 25 sts rem.
Row 48: Yo, knit to end – 1 st inc'd, 26 sts.

Rep Rows 1-48, 2 more times.

Center Edging Section

Note: There is no need to work together wraps with their stitches. The garter bumps will hide the wraps.

Row 1 (RS): K2, yo, knit to end.
Row 2 (WS): K22, W&T.
RS Rows 3-23: Yo, knit to end.
Row 4: K20, W&T.
Row 6: K18, W&T.
Row 8: K16, W&T.
Row 10: K14, W&T.
Row 12: K12, W&T.
Row 14: K10, W&T.
Row 16: K8, W&T.
Row 18: K6, W&T.
Row 20: K4, W&T.
Row 22: K2, W&T.
Row 24: K2, k2tog, W&T.
RS Rows 25-45: Knit.
Row 26: K4, k2tog, W&T.
Row 28: K6, k2tog, W&T.
Row 30: K8, k2tog, W&T.

Row 32: K10, k2tog, W&T.
Row 34: K12, k2tog, W&T.
Row 36: K14, k2tog, W&T.
Row 38: K16, k2tog, W&T.
Row 40: K18, k2tog, W&T.
Row 42: K20, k2tog, W&T.
Row 44: K22, k2tog, W&T.
Row 46: K25, k2tog.

Rep Rows 1-48 of Diamond Edging, 3 times. Bind off all sts.

Shawl Body

With B and RS facing, pick up and knit 169 sts along side of Edging (approx. 1 st for every other row).

Set-up row (WS): K2, pm, p82, pm, p1, pm, p82, pm, k2.

Note: The following section is also charted for your convenience.

Row 1 (RS): K2, sl m, k2tog, knit to 3 sts bef m, sssk, yo, sl m, k1, sl m, yo, k3tog, knit to 2 sts bef m, ssk, k2 – 4 sts dec'd, 165 sts rem.

Row 2 (WS): Knit to end.

Row 3: K2, sl m, k2tog, k2, [work Seed over 3 sts] to 4 sts bef m, k1, sssk, yo, sl m, k1, sl m, yo, k3tog, k1, [work Seed over 3 sts] to 4 sts bef m, k2, ssk, sl m, k2 – 4 sts dec'd, 161 sts rem.

Row 4: K2, sl m, purl to m, sl m, k1, sl m, purl to m, sl m, k2.

Row 5: Rep Row 1 – 4 sts dec'd, 157 sts rem.

Row 6: Knit to end.

Row 7: K2, sl m, k2tog, [work Seed over 3 sts] to 5 sts bef m, k2, sssk, yo, sl m, k1, sl m, yo, k3tog, k2, [work Seed over 3 sts] to 2 sts bef m, ssk, sl m, k2 – 4 sts dec'd, 153 sts rem.

Row 8: Rep Row 4.

Row 9: Rep Row 1 – 4 sts dec'd, 149 sts rem.

Row 10: Knit to end.

Row 11: K2, sl m, k2tog, k1, [work Seed over 3 sts] to 3 sts bef m, sssk, yo, sl m, k1, sl m, yo, k3tog, [work Seed over 3 sts] to 3 sts bef m, k1, ssk, sl m, k2 – 4 sts dec'd, 145 sts rem.

Row 12: Rep Row 4.

Rep Rows 1-12, 5 more times – 120 sts dec'd, 25 sts rem.

Knit. Relax. Smile. Repeat!

2019 © Universal Yarn, Inc.

All rights reserved.

www.universalyarn.com

This pattern may not be reproduced for business, trade or sale.

Ending Section Row 1 (RS): K2, sl m, k2tog, k5, sssk, yo, sl m, k1, sl m, yo, k3tog, k5, ssk, sl m, k2 – 4 sts dec'd, 21 sts rem.

Row 2 (WS): Knit to end.

Row 3: K2, sl m, k2tog, k3, sssk, yo, sl m, k1, sl m, yo, k3tog, k3, ssk, sl m, k2 – 4 sts dec'd, 17 sts rem.

Row 4: K2, sl m, purl to m, sl m, k1, sl m, purl to m, sl m, k2.

Row 5: K2, sl m, k2tog, k1, sssk, yo, sl m, k1, sl m, yo, k3tog, k1, ssk, sl m, k2 – 4 sts dec'd, 13 sts rem.

Row 6: Knit to end.

Row 7: K2, remove m, k2tog, ssk, remove m, k1, remove m, k2tog, ssk, remove m, k2 – 4 sts dec'd, 9 sts rem.

Row 8: K2, p2tog, k1, p2tog, k2 – 2 sts dec'd, 7 sts rem.

Row 9: K2, k3tog, k2 – 2 sts dec'd, 5 sts rem.

Break yarn. Place first and last 2 sts on separate dpns. Join with Kitchener st, sewing down the rem center live st at the end of the graft.

ssk

slip next 2 sts individually knitwise, slip them back to left needle in this position, knit them together through the back loops (1 st dec'd)

sssk

slip next 3 sts individually knitwise, slip them back to left needle in this position, knit them together through the back loops (2 sts dec'd)

st(s)

stitch(es)

WS

wrong side

yo

yarn over

FINISHING

Weave in ends. Block to finished measurements.

Abbreviations

bef	before
circ	circular
dec('d)	decrease(d)
dpn(s)	double pointed needle(s)
inc('d)	increase(d)
k	knit
k2tog	knit 2 stitches together (1 st dec'd)
k3tog	knit 3 stitches together (2 sts dec'd)
m	marker
ndl	needle
p	purl
p2tog	purl 2 sts together (1 st dec'd)
patt	pattern
pm	place marker
rem	remain(ing)
rep	repeat
RS	right side
sl	slip

Knit. Relax. Smile. Repeat!

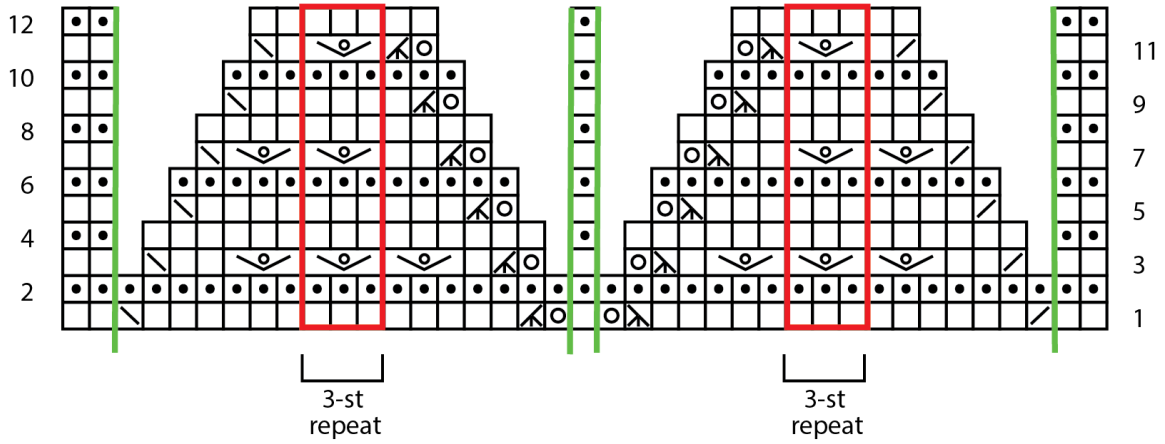
2019 © Universal Yarn, Inc.

All rights reserved.

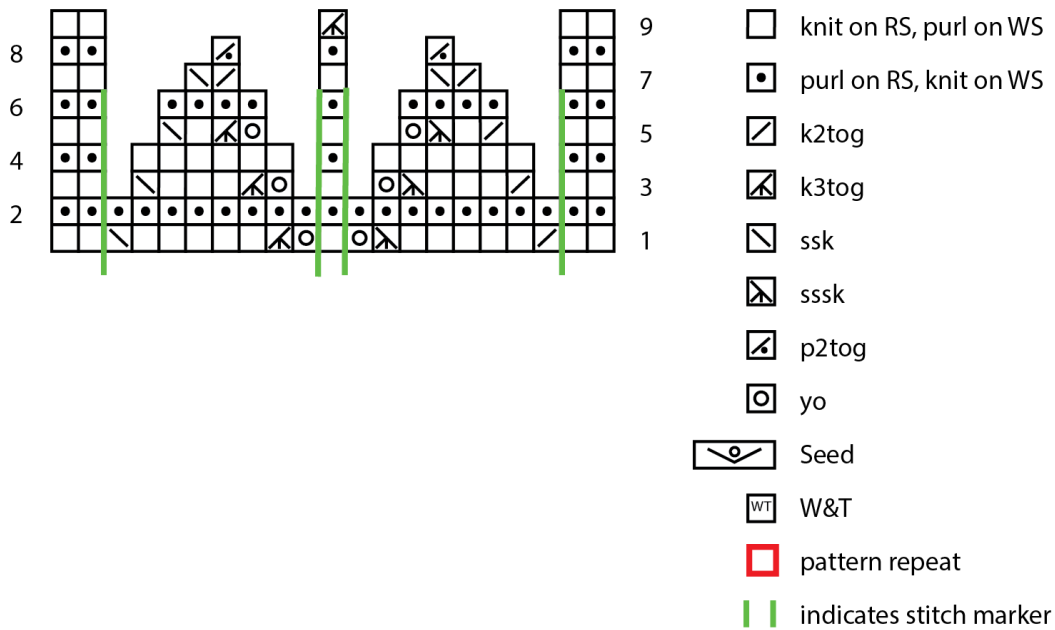
www.universalyarn.com

This pattern may not be reproduced for business, trade or sale.

Shawl Body



Shawl Body Ending Section



Knit. Relax. Smile. Repeat!

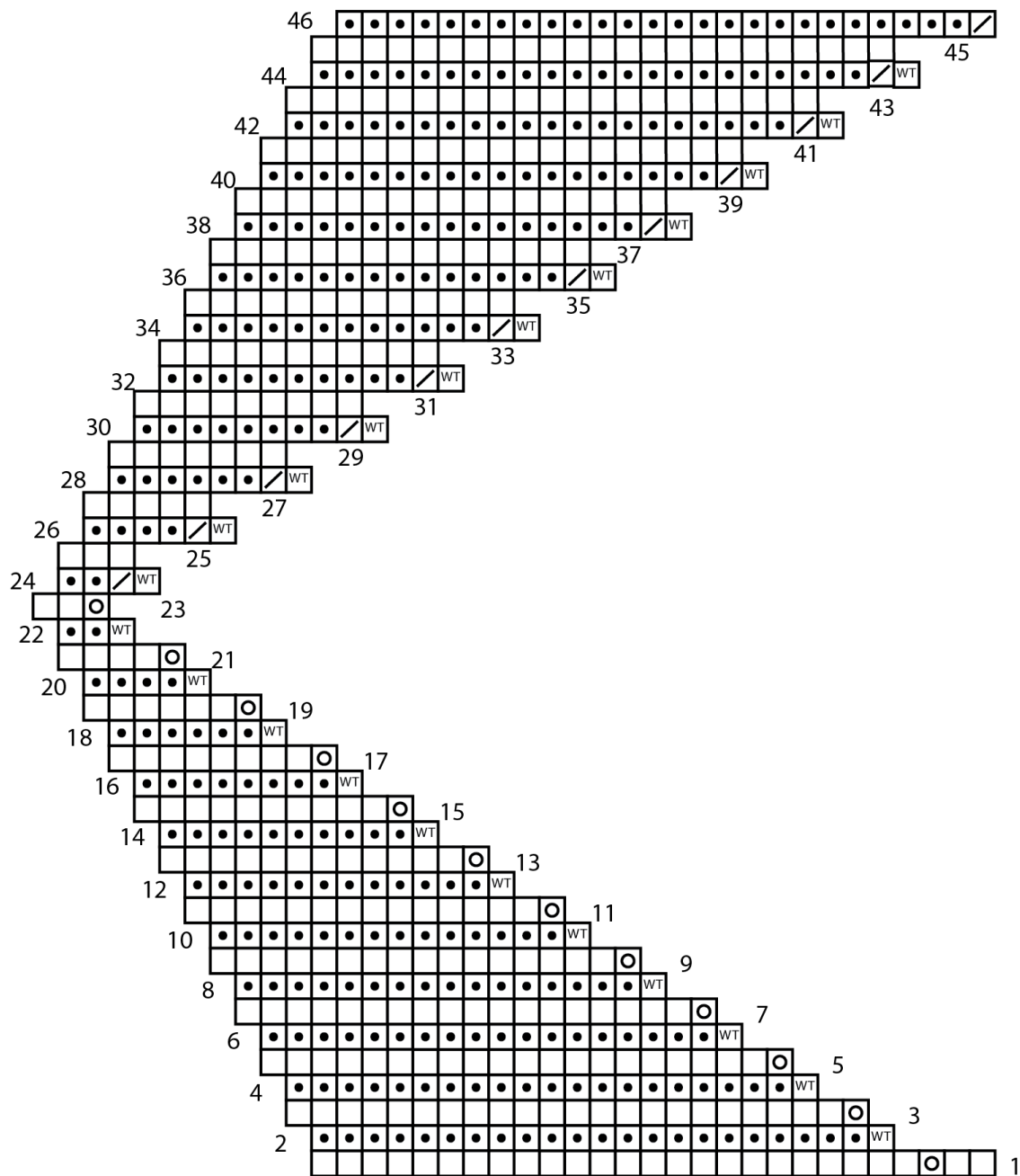
2019 © Universal Yarn, Inc.

All rights reserved.

www.universalyarn.com

This pattern may not be reproduced for business, trade or sale.

Center Edging Section



Knit. Relax. Smile. Repeat!

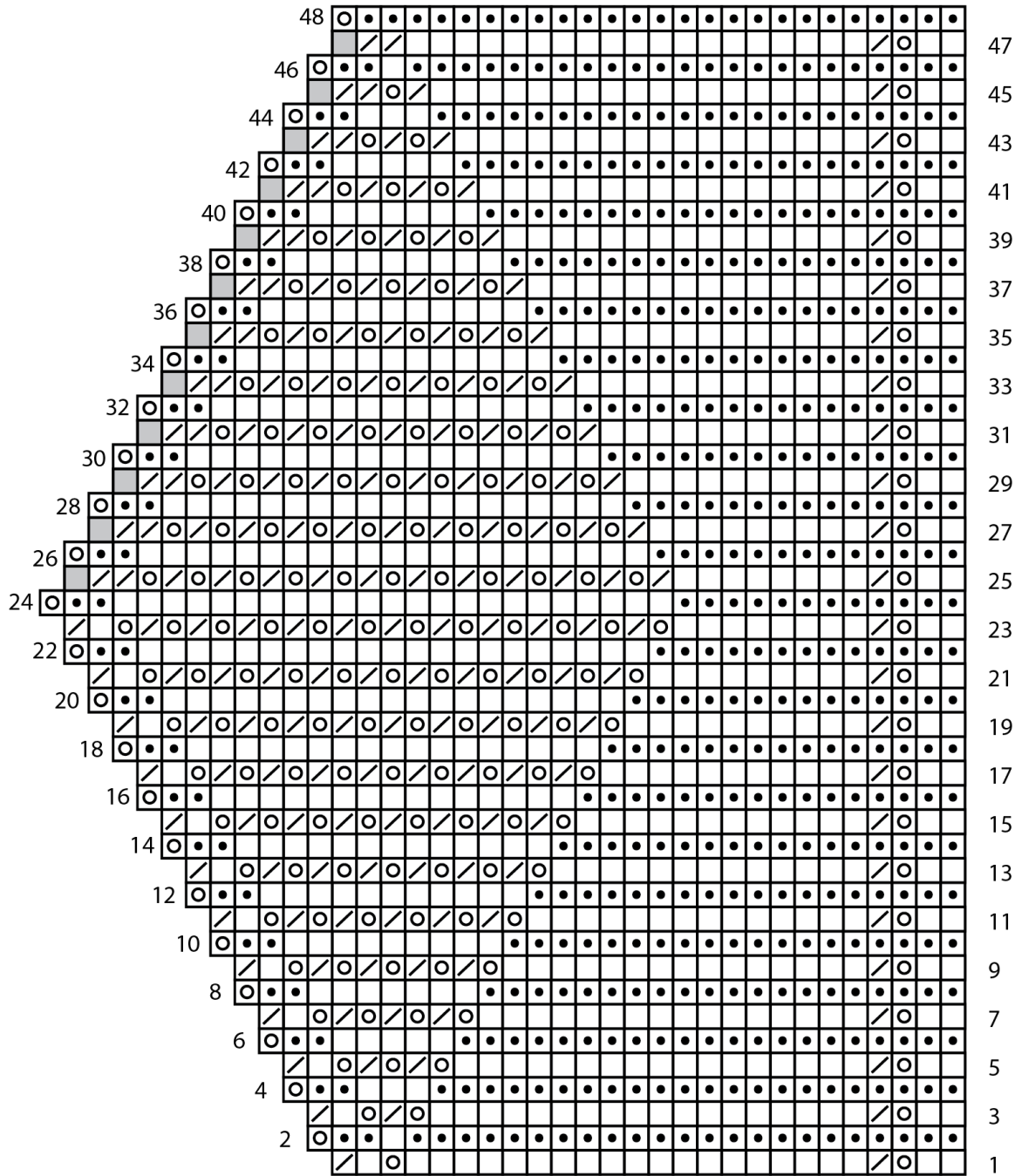
2019 © Universal Yarn, Inc.

All rights reserved.

www.universalyarn.com

This pattern may not be reproduced for business, trade or sale.

Diamond Edging



Knit. Relax. Smile. Repeat!

2019 © Universal Yarn, Inc.

All rights reserved.

www.universalyarn.com

This pattern may not be reproduced for business, trade or sale.