



PATTERN COLLECTION

Accessories



Moor Hat

Designed by Rachel Brockman

DIFFICULTY

Easy

SIZES

Adult Medium

FINISHED MEASUREMENTS

Brim Circumference: 22¼"

Length (unfolded): 17¼"

MATERIALS

Universal Yarn [Deluxe DK Tweed Superwash](#) (90% superwash wool, 7% acrylic, 3% viscose; 100g/284 yds)

- 405 Pine (MC) - 1 skein
- 415 Cloud Blue (CC) - 1 skein

Needles: US Size 7 (4.5 mm) 16" circular and set of DPNs (or you preferred needle for knitting small circumferences) *or size needed to obtain gauge*

US Size 5 (3.75 mm) 16" circular

Notions: Tapestry needle, stitch markers

GAUGE

21 sts x 30 rows = 4" in Stockinette
Stitch (St st) with larger ndl

18 sts x 30 rows = 4" in Lace patt with
larger ndl

Knit, Relax, Smile, Repeat!

2022 © Universal Yarn, Inc.

www.universalyarn.com

All rights reserved. This pattern may not be reproduced for business, trade or sale.

Questions? Contact patterns@universalyarn.com

PATTERN NOTES

Inspired by the mossy, grassy vegetation of moorland habitats, the Moor Hat is cushiony, warm, and versatile. Worked as a tube, this hat can be worn with the decorative lace on the outside, featuring a contrast rib that mimics a horizon line dividing the treeless landscape and cloud blue skies. For more casual outings, simply turn the work inside out and show off the tweedy nubs of our Deluxe DK Tweed Superwash on a background of soothing Stockinette stitch.

This double-layered hat is worked in the round from crown to crown. It is reversible but primarily intended to be worn with the lace section on the outside. The Crown Increase, Lace, and Crown Decrease sections are both written and charted for your convenience.

STITCH GUIDE

Rib

(multiple of 10 sts)

Rnd 1: * P1, k3, p1, k1, p1, k3; rep from * to end.

Rep Rnd 1 for patt.

Lace

(multiple of 10 sts)

Rnd 1: * P1, k2, k2tog, yo, k1, yo, ssk, k2; rep from * to end.

Rnd 2: * P1, k9; rep from * to end.

Rnd 3: * P1, k1, k2tog, yo, k3, yo, ssk, k1; rep from * to end.

Rnd 4: Rep Rnd 2.

Rnd 5: * P1, k3, yo, S2KP2, yo, k3; rep from * to end.

Rnd 6: * [P1, k4] 2 times; rep from * to end.

Rnd 7: * K1, yo, ssk, k2, p1, k2, k2tog, yo; rep from * to end.

Rnd 8: * K5, p1, k4; rep from * to end.

Rnd 9: * K2, yo, ssk, k1, p1, k1, k2tog, yo, k1; rep from * to end.

Rnd 10: Rep Rnd 8.

Rnd 11: * Yo, S2KP2, yo, k3, p1, k3; rep from * to end.

Rnd 12: Rep Rnd 6.

Rep Rnds 1-12 for patt.

PATTERN BEGINS

HAT

With larger set of DPNs, or your preferred method for knitting small circumferences in the rnd, and using MC, cast on 9 sts. PM and join to knit in the rnd, being careful not to twist.



Crown Increase Section

Note 1: When there are too many sts to fit comfortably on DPNs, change to larger 16" circ ndl.

Note 2: You may wish to place markers between each pattern repeat.

Rnd 1: [K1, pm] 8 times, k1.

Rnd 2: * Kfb, sl m; rep from * to end - 9 sts inc'd, 18 sts.

Rnd 3: Knit to end.

Rnd 4: * K1, kfb, sl m; rep from * to end - 9 sts inc'd, 27 sts.

Rnd 5: Knit to end.

Rnd 6: * K1, m1, k2, m1, sl m; rep from * to end - 18 sts inc'd, 45 sts.

Rnd 7: Knit to end.

Rnd 8: * K1, m1, k4, m1, sl m; rep from * to end - 18 sts inc'd, 63 sts.

Rnd 9: Knit to end.

Rnd 10: * K1, m1, k6, m1, sl m; rep from * to end - 18 sts inc'd, 81 sts.

Rnd 11: Knit to end.

Rnd 12: * K1, m1, k8, m1, sl m; rep from * to end - 18 sts inc'd, 99 sts.

Knit, Relax, Smile, Repeat!

2022 © Universal Yarn, Inc.

www.universalyarn.com

All rights reserved. This pattern may not be reproduced for business, trade or sale.

Questions? Contact patterns@universalyarn.com

Rnd 13: Knit to end.

Rnd 14: * K1, m1, k10, m1, sl m, rep from * to end - 18 sts inc'd, 117 sts.

Stockinette Stitch Section

Note: During Dec Rnd, remove markers as you come to them.

Rnd 1: Knit to end.

Rep Rnd 1 until piece meas 6½" from cast-on.

Dec Rnd: Knit, decreasing 17 sts evenly around, and removing markers as you come to them - 17 sts dec'd, 100 sts rem.

Change to smaller 16" circ ndl.

Rib Section

Rnd 1: * P1, k3, p1, k1, p1, k3, pm; rep from * to end.

Rnd 2: * P1, k3, p1, k1, p1, k3, sl m; rep from * to end.

Cont in Rib patt as est'd until piece meas 10¾" from cast-on edge.

Break MC. Join CC. Change to larger 16" circ.

Lace Section

Rnd 1: Work Rnd 1 of Lace patt to end. Lace patt will be repeated 10 times across each rnd.

Rnd 2: Work Rnd 2 of Lace patt to end.

Rnd 3: Work Rnd 3 of Lace patt to end.

Rnd 4: Work Rnd 4 of Lace patt to end.

Rnd 5: Work Rnd 5 of Lace patt to end.

Rnd 6: Work Rnd 6 of Lace patt to end.

Rnd 7: Work Rnd 7 of Lace patt to end.

Rnd 8: Work Rnd 8 of Lace patt to end.

Rnd 9: Work Rnd 9 of Lace patt to end.

Rnd 10: Work Rnd 10 of Lace patt to end, remove bor, sl last st on RH ndl back to LH ndl, pm to denote new bor.

Rnd 11: Work Rnd 11 of Lace patt to end, remove bor, sl next st to RH ndl, replace m to denote new bor.

Rnd 12: Work Rnd 12 of Lace patt to end.

Rep Rnds 1-12, 1 more time, then rep Rnds 1-11, 1 time. Piece meas approx. 15½" from cast-on.

Crown Decrease Section

Note 1: When there are too few sts to fit comfortably on circ ndl, change to DPNs or your preferred method for small circumference knitting.

Rnd 1: * [P1, k4] 2 times, sl m; rep from * to end.

Rnd 2: * P1, k3tog, k1, yo, k1, yo, k1, sssk, sl m; rep from * to end - 20 sts dec'd, 80 sts rem.



Rnd 3: * P1, k7, sl m; rep from * to end.

Rnd 4: * P1, k2tog, yo, k3, yo, ssk, sl m; rep from * to end.

Rnd 5: Rep Rnd 3.

Rnd 6: * P1, ssk, yo, S2KP2, yo, k2tog, sl m; rep from * to end - 20 sts dec'd, 60 sts rem.

Rnd 7: * [P1, k2] 2 times; rep from * to end.

Rnds 8-9: * K3, p1, k2, sl m; rep from * to end.

Rnd 10: * K1, ssk, p1, k2tog, sl m; rep from * to end - 20 sts dec'd, 40 sts rem.

Rnds 11-12: * K2, p1, k1; sl m; rep from * to end.

Rnd 13: * K1, S2KP2; sl m; rep from * to end - 20 sts dec'd, 20 sts rem.

Rnd 13: * K2tog; rep from * to end - 10 sts dec'd, 10 sts rem. *Note: Remove markers as you come to them.*

Break yarn leaving 8" tail. Pass tail through rem live sts, pull taut, fasten off.

FINISHING

Gently wash and block to finished measurements. Weave in ends. Work currently forms a closed tube. To complete, with the Lace Section facing outward, at center of the Rib Section, tuck the Stockinette Stitch section inside of the Lace Section. Flip work inside out to wear with the Stockinette Stitch section shown.

Knit, Relax, Smile, Repeat!

2022 © Universal Yarn, Inc.

www.universalyarn.com

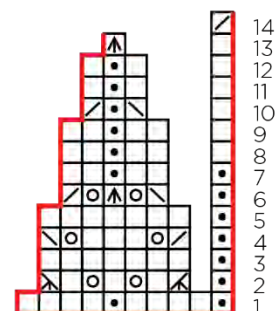
All rights reserved. This pattern may not be reproduced for business, trade or sale.

Questions? Contact patterns@universalyarn.com

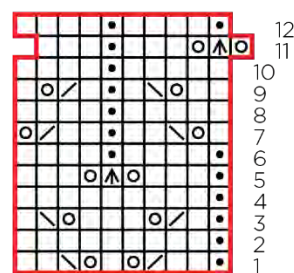
Abbreviations

approx.	approximately
bef	before
beg	begin(ning)
bet	between
bor	beginning of round
CC	contrast color
circ	circular
cont	continue
dec('d)	decrease(d)
dpn(s)	double pointed needle(s)
est'd	established
k	knit
k2tog	knit 2 stitches together (1 st dec'd)
k3tog	knit 3 stitches together (2 sts dec'd)
kfb	knit into front and back of next st (1 st inc'd)
m	marker
m1	insert left needle from front to back under horizontal strand of yarn lying between st just worked and next st, knit or purl this st through the back loop (1 st inc'd)
MC	main color
meas	measures
ndl	needle
p	purl
patt	pattern
pm	place marker
RH	right hand
rem	remain(ing)
rep	repeat
rnd	round
S2KP2	slip 2 stitches as if to knit 2 together, knit 1, pass 2 slipped stitches over knit stitch; centered double decreases
sl	slip
ssk	slip next 2 sts individually knitwise, slip them back to left needle in this position, knit them together through the back loops (1 st dec'd)
sssk	slip next 3 sts individually knitwise, slip them back to left needle in this position, knit them together through the back loops (2 sts dec'd)
St st	Stockinette stitch (knit on RS rows, purl on WS rows; in the rnd, knit every rnd)
st(s)	stitch(es)
yo	yarn over

Crown Decrease

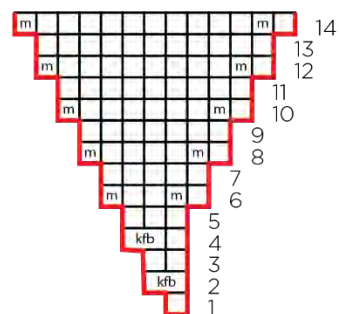


Lace



10 stitch repeat

Crown Increase



Key

	pattern repeat		S2KP2
	knit		k3tog
	purl		sssk
	yo		m1
	ssk		kfb
	k2tog		

Knit, Relax, Smile, Repeat!

2022 © Universal Yarn, Inc.

www.universalyarn.com

All rights reserved. This pattern may not be reproduced for business, trade or sale.

Questions? Contact patterns@universalyarn.com