

PATTERN COLLECTION: *ACCESSORIES*



Mitered Square Shawl

Designed by Universal yarn Design Team

FINISHED MEASUREMENTS

Width: 70"

Depth in center: 35"

MATERIALS

Wisdom Yarns Angora Lace (50% fine merino superwash, 20% angora, 30% nylon; 100g/462 yds)

- 109 Global (A) – 2 balls
- 105 Paradise (B) – 1 ball

Needles: US Size 5 (3.75 mm) 32" circular *or size needed to obtain gauge*

Notions: Stitch markers, tapestry needle

GAUGE

24 sts x 36 rows = 4" in St st

1 mitered square = 3½" wide

Save time, check your gauge.

Knit, Relax, Smile, Repeat!

2014 © Universal Yarn, Inc.

All rights reserved.

www.universalyarn.com

This pattern may not be reproduced for business, trade or sale.

PATTERN NOTES

The upper portion of this shawl is worked in a modular fashion. Mitered squares and triangles are knit and attached to one another as you go, forming a triangle

Stitches are picked up off the 2 short sides of the mitered section and the lower portion of the shawl is knit.

Finally, the lace edging is worked sideways, and stitches from the shawl body are bound off as you go.

Upper Shawl, Mitered Section

Mitered Squares and Triangles are worked entirely in color A.

Square 1

Cast on 39 sts.

Row 1 (WS): K39.

Row 2 (RS): Sl 1 pwise wyif, k17, sl2-k1-p2sso, k17, k1 tbl – 37 sts rem.

Row 3: Sl 1 pwise wyif, knit to last st, k1 tbl.

Row 4: Sl 1 pwise wyif, k16, sl2-k1-p2sso, k16, k1 tbl – 35 sts rem.

Row 5: Rep Row 3.

Row 6: Sl 1 pwise wyif, k15, sl2-k1-p2sso, k15, k1 tbl – 33 sts rem.

WS Rows 7-37: Sl 1 pwise wyif, purl to last st, k1 tbl.

Row 8: Sl 1 pwise wyif, k14, sl2-k1-p2sso, k14, k1 tbl – 31 sts rem.

Row 10: Sl 1 pwise wyif, k13, sl2-k1-p2sso, k13, k1 tbl – 29 sts rem.

Row 12: Sl 1 pwise wyif, p12, sl2-k1-p2sso, p12, k1 tbl – 27 sts rem.

Row 14: Sl 1 pwise wyif, k11, sl2-k1-p2sso, k11, k1 tbl – 25 sts rem.

Row 16: Sl 1 pwise wyif, k10, sl2-k1-p2sso, k10, k1 tbl – 23 sts rem.

Row 18: Sl 1 pwise wyif, p9, sl2-k1-p2sso, p9, k1 tbl – 21 sts rem.

Row 20: Sl 1 pwise wyif, k8, sl2-k1-p2sso, k8, k1 tbl – 19 sts rem.

Row 22: Sl 1 pwise wyif, k7, sl2-k1-p2sso, k7, k1 tbl – 17 sts rem.

Row 24: Sl 1 pwise wyif, k6, sl2-k1-p2sso, k6, k1 tbl – 15 sts rem.

Row 26: Sl 1 pwise wyif, k5, sl2-k1-p2sso, k5, k1 tbl – 13 sts rem.

Row 28: Sl 1 pwise wyif, k4, sl2-k1-p2sso, k4, k1 tbl – 11 sts rem.

Row 30: Sl 1 pwise wyif, k3, sl2-k1-p2sso, k3, k1 tbl – 9 sts rem.

Row 32: Sl 1 pwise wyif, k2, sl2-k1-p2sso, k2, k1 tbl – 7 sts rem.

Row 34: Sl 1 pwise wyif, k1, sl2-k1-p2sso, k1, k1 tbl – 5 sts rem.

Row 36: Sl 1 pwise wyif, sl2-k1-p2sso, k1 tbl – 3 sts rem.

Row 38: Sl2-k1-p2sso – 1 st rem. Do not fasten off.

Squares 2, 3, & 4

With last st of previous square still on ndl and RS facing, pick up and knit 19 sts along edge of previous square, cast on 19 sts – 39 sts. Work Rows 1-38 as for Square 1.

Triangle 5

With last st of previous square still on ndl and RS facing, pick up and knit 19 sts along edge of previous square, cast on 19 sts – 39 sts.

Row 1 (WS): K39.

Row 2 (RS): K2tog, k16, sl2-k1-p2sso, k16, k2tog – 35 sts rem.

Row 3: Sl 1 pwise wyif, knit to last st, k1 tbl.

Row 4: K2tog, k14, sl2-k1-p2sso, k14, k2tog – 31 sts rem.

Row 5: Rep Row 3.

Row 6: K2tog, k12, sl2-k1-p2sso, k12, k2tog – 27 sts rem.

WS Rows 7-15: Sl 1 pwise wyif, purl to end.

Row 8: K2tog, k10, sl2-k1-p2sso, k10, k2tog – 23 sts rem.

Row 10: K2tog, k8, sl2-k1-p2sso, k8, k2tog – 19 sts rem.

Row 12: P2tog, p6, sl2-k1-p2sso, p6, p2tog – 15 sts rem.

Row 14: K2tog, k4, sl2-k1-p2sso, k4, k2tog – 11 sts rem.

Row 16: K2tog, k2, sl2-k1-p2sso, k2, k2tog – 7 sts rem.

Row 17: K2tog, sl2-k1-p2sso, k2tog – 3 sts rem.

Row 18: Sl2-k1-p2sso – 1 st rem. Fasten off last st.

Knit. Relax. Smile. Repeat!

2014 © Universal Yarn, Inc.

All rights reserved.

www.universalyarn.com

This pattern may not be reproduced for business, trade or sale.

Square 6

Cast on 19 sts, pick up and knit 20 sts along edge of Square 1 with RS facing – 39 sts. Work Rows 1-38 as for Square 1.

Squares 7 & 8

With last st of previous square still on ndl and RS facing, pick up and knit 18 sts along previous square, 1 st in center where previous square meets square from tier below, and 19 sts along side of next square from tier below – 39 sts. Work Rows 1-38 as for Square 1.

Triangle 9

With last st of previous square still on ndl and RS facing, pick up and knit 18 sts along previous square, 1 st in center where previous square meets square from tier below, and 19 sts along side of next square from tier below – 39 sts. Work Rows 1-18 as for Triangle 5.

Squares 10, 11, 13

Work as est'd.

Triangles 12, 14

Work as est'd.

Triangle 15

Cast on 19 sts, pick up and knit 20 sts along side of Square 13 with RS facing. Work Rows 1-18 as for Triangle 5.

Lower Shawl

With B and RS facing, pick up and knit 99 sts along first edge of Upper Shawl, 1 st in center point, and 99 sts along second edge of Upper Shawl – 199 sts.

Set-up row (WS): K3, pm, k96, pm, k1 (center st), pm, k96, pm, k3.

Section 1

Row 1 (Inc): K3, sl m, yo, knit to center st, yo, sl m, k1, sl m, yo, knit to last 3 sts, yo, sl m, k3 – 4 sts inc'd.

Row 2: K3, purl to last 3 sts, k3.

Rows 3-16: Rep Rows 1 & 2.

Row 17: With A, rep Row 1.

Row 18: With A, knit.

Row 19: With A, K3, sl m, yo, k1, [k2tog, yo] to 1 st before m, k1, yo, sl m, k1 (center st), sl m, yo, k1, [k2tog, yo] to last 4 sts, k1, yo, sl m, k3 – 4 sts inc'd.

Row 20: With A, knit.
239 sts.

Section 2

Rows 1-12: With B, rep Rows 1-12 of Section 1.

Rows 13-16: With A, rep Rows 17-20 of Section 1.
271 sts.

Section 3

Rows 1-8: With B, rep Rows 1-8 of Section 1.

Rows 9-12: With A, rep Rows 17-20 of Section 1.
295 sts.

Section 4

Rows 1-4: With B, rep Rows 1-4 of Section 1.

Break B.

Rows 5-8: With A, rep Rows 17-20 of Section 1.
311 sts.

Section 5

Rows 1-4: With A, rep Rows 17-20 of Section 1.
319 sts.

Border

With A, cast on 14 sts to first st on needle.

Row 1: Work Row 1 of Edging patt to end – 1 st bound-off from Shawl Body.

Cont through Row 22 of Edging patt – 11 sts have been bound-off from Shawl Body.

Cont to work reps of Rows 1-22 of Edging patt, 28 more times. All sts have been bound of from Shawl body. Bind off rem Edging sts.

FINISHING

I-Cord Edging

With A and RS facing, pick up and knit 2 sts for every 3 rows along top edge of shawl. Break yarn and slide sts to other end of ndl, restarting work with the RS facing.

Bind-off row (RS): Cast on 3 sts, * k2, k2tog tbl, sl 3 sts back to LH ndl; rep from * until 4 sts rem. Bind off rem 4 sts. Weave in ends and block.

Knit. Relax. Smile. Repeat!

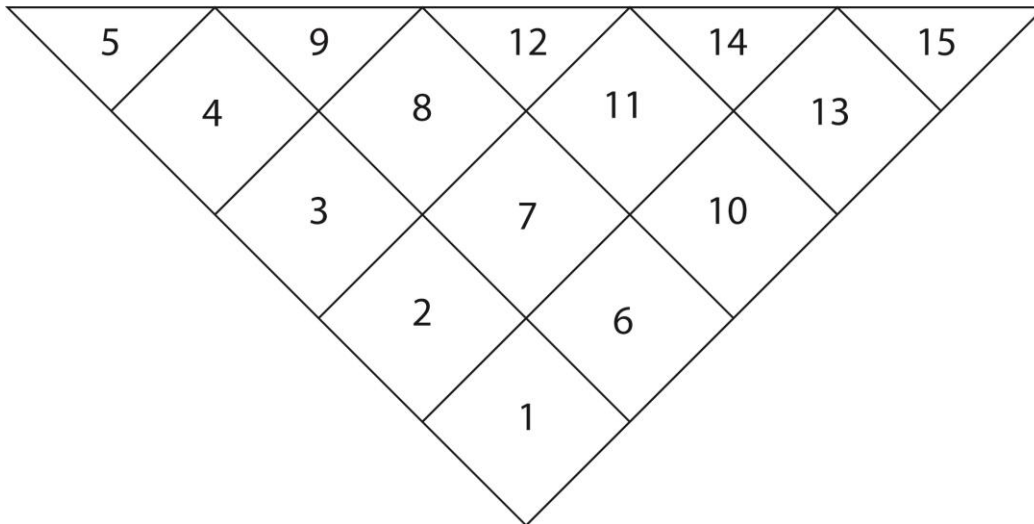
2014 © Universal Yarn, Inc.

All rights reserved.

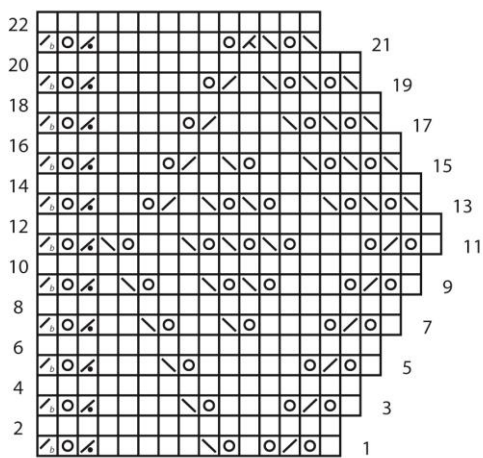
www.universalyarn.com

This pattern may not be reproduced for business, trade or sale.

Upper Shawl, Mitered Section



Edging



Key

- knit on RS, purl on WS
- yo
- k2tog
- ssk
- p2tog
- k2tog tbl
(last edging st with Shawl body st)
- k3tog



Knit, Relax, Smile, Repeat!

2014 © Universal Yarn, Inc.

All rights reserved.

www.universalyarn.com

This pattern may not be reproduced for business, trade or sale.