



# PATTERN COLLECTION

## Women



### Mimosa Poncho

Designed by Afifa Sayeed

#### SKILL

Knitting

#### DIFFICULTY

Easy

#### SIZES

One Size

#### FINISHED MEASUREMENTS

Rectangle Width: 25"

Rectangle Length: 46"

Assembled Width: 34"

#### MATERIALS

[Universal Yarn Sugar Saki](#) (50% superwash merino wool, 25% bamboo, 25% nylon; 100g/459yds)

- 502 Lollipop - 2 balls

**Needles:** US Size 4 (3.5mm) 24" circular needle (to accommodate large number of sts), or size needed to obtain gauge

**Notions:** Stitch markers (optional), removable stitch marker, tapestry needle

#### GAUGE

20 sts x 30 rows = 4" in Zig Zag Mesh

**Save time, check your gauge.**

Knit, Relax, Smile, Repeat!

2024 © Universal Yarn, Inc.

[www.universalyarn.com](http://www.universalyarn.com)

All rights reserved. This pattern may not be reproduced for business, trade or sale.

Questions? Contact [patterns@universalyarn.com](mailto:patterns@universalyarn.com)

## PATTERN NOTES

This light and airy layering piece is just the ticket to throw on as you walk out the door for Sunday brunch. Or really, any time! Designed to showcase the variegated shades of our colorful Sugar Saki yarn, the bamboo content gives this piece just the right amount of drape.

This poncho is knit flat from the bottom up working along the narrowest side. The bound-off edge is seamed to the side of the piece to create the shape, as shown in the schematic. Please note that this pattern is written to make the most of two balls of Sugar Saki. You will need to unravel your swatch to use in the final piece, and you may wish to purchase an additional skein of yarn as insurance.

## STITCH GUIDE

### Zig Zag Mesh

(multiple of 11 sts, plus 14)

**RS Rows 1-9:** K3, \* [yo, k2tog] 4 times, k3; rep from \* to last 11 sts, [yo, k2tog] 4 times, k2, sl 1 wyif.

**WS Rows 2-22:** K1, purl to last stitch, sl 1 wyif.

**RS Rows 11-21:** K3, \* [ssk, yo] 4 times, k3; rep from \* to last 11 sts, [ssk, yo] 4 times, k2, sl 1 wyif.

Rep Rows 1-22 for patt.

## PATTERN BEGINS

### Poncho

*Note: You may wish to place markers between pattern repeats to help you stay on track.*

Cast on 124 stitches.

Work Rows 1-22 of Zig Zag Mesh until piece meas approx. 46" from cast-on edge, ending with Row 22 of patt. Pattern will be repeated 10 times across each row.

Bind off all sts in patt.

## FINISHING

Gently wash and block pieces to finished measurements. Weave in ends.

Place removable stitch marker on right side of rectangle, 25" above cast-on edge. Sew bound off edge to side as shown in schematic, using the removable stitch marker as a guide.



## Abbreviations

*	indicates a repeat section
approx.	approximately
k	knit
k2tog	knit 2 stitches together (1 st dec'd)
meas	measures
ndl	needle
patt	pattern
rep	repeat
RS	right side
sl	slip
ssk	slip next 2 sts individually knitwise, slip them back to left needle in this position, knit them together through the back loops (1 st dec'd)
st(s)	stitch(es)
WS	wrong side
wyif	with yarn held in front
yo	yarn over

Knit, Relax, Smile, Repeat!

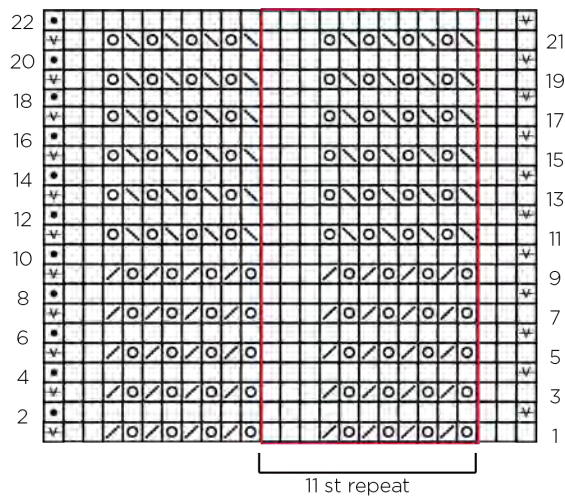
2024 © Universal Yarn, Inc.

[www.universalyarn.com](http://www.universalyarn.com)

All rights reserved. This pattern may not be reproduced for business, trade or sale.

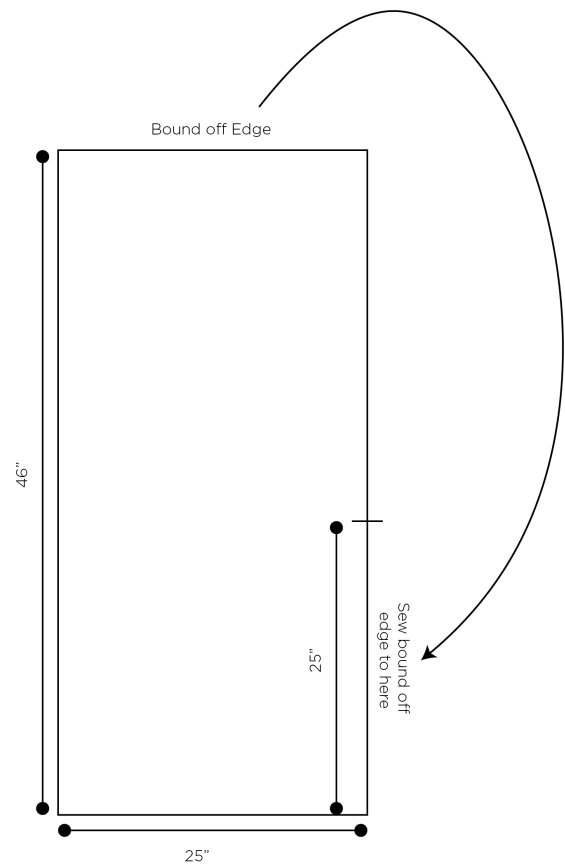
Questions? Contact [patterns@universalyarn.com](mailto:patterns@universalyarn.com)

## Zig Zag Mesh



### Key

- pattern repeat
- knit on RS, purl on WS
- purl on RS, knit on WS
- yarnover
- ssk
- k2tog
- sl1wyif



Knit, Relax, Smile, Repeat!

2024 © Universal Yarn, Inc.

[www.universalyarn.com](http://www.universalyarn.com)

All rights reserved. This pattern may not be reproduced for business, trade or sale.

Questions? Contact [patterns@universalyarn.com](mailto:patterns@universalyarn.com)