



## PATTERN COLLECTION

### Accessories



#### Mermaid Shawl DK

Designed by Tori Gurbisz

#### SKILL

Knitting

#### DIFFICULTY

Easy

#### SIZES

One Size

#### FINISHED MEASUREMENTS

Wingspan: 66"

Depth at Center: 17¼"

#### MATERIALS

[Universal Yarn Deluxe DK Superwash](#)  
(100% superwash wool; 100g/284 yds)

- 834 Cream (MC) - 2 balls

[Universal Yarn Colorburst](#) (65%  
superwash merino, 35% acrylic;  
200g/660 yds)

- 113 Chevron (CC) - 1 ball

**Needles:** US Size 9 (5.5 mm) 32-40"  
circular or longer (to accommodate  
large number of sts) *or size needed to  
obtain gauge*

**Notions:** Tapestry needle, stitch markers

#### GAUGE

18 sts x 22 rows = 4" in Stockinette stitch  
(St st)

Save time, check your gauge.

Knit, Relax, Smile, Repeat!

2023 © Universal Yarn, Inc.

[www.universalyarn.com](http://www.universalyarn.com)

All rights reserved. This pattern may not be reproduced for business, trade or sale.

Questions? Contact [patterns@universalyarn.com](mailto:patterns@universalyarn.com)

## PATTERN NOTES

Wrap yourself in cozy comfort with the Mermaid Shawl, an old favorite revisited in our Deluxe DK Superwash and Colorburst yarns! This striking pattern combines triangular and crescent construction for a beautiful shape that's endlessly wearable. The solid upper portion is complemented by the striking slip stitch edging that creates the look of mermaid scales thanks to self-shading Colorburst. This shawl is excellent for year-round wear, keeping you cozy in any climate!

This shawl is worked from the top down. For the Main Body of the shawl, 6 stitches are increased every right side row - 2 at each edge and 2 at the center. For the Edging, 6 stitches are still increased every right side row, except now the shaping changes to 3 at each edge.

In this pattern, work all slipped stitches purlwise with yarn held to the wrong side of work.

## PATTERN BEGINS

### SHAWL

#### Starting Tab

With MC, cast on 2 sts.

Rows 1-10: Knit.

**Row 11 (RS):** K2, rotate work 90 degrees, pick up and knit 5 sts from side of Tab, pick up and knit 2 sts - 9 sts.

**Row 12 (WS):** K2, pm, p2, pm, p1, pm, p2, pm, k2.

**Row 13:** K2, sl m, [m1, k1] 2 times, m1, sl m, k1, sl m, [m1, k1] 2 times, m1, sl m, k2 - 6 sts inc'd, 15 sts.

**Row 14:** K2, sl m, purl to last m, sl m, k2.

#### Main Body

**Row 1 (RS):** K2, sl m, m1, k1, m1, knit to m, m1, sl m, k1, sl m, m1, knit to 1 st bef m, m1, k1, m1, sl m, k2 - 6 sts inc'd, 21 sts.

**Row 2 (WS):** K2, sl m, purl to last m, sl m, k2.

Rep Rows 1-2, 19 more times, then rep Row 1, one more time - 120 sts inc'd, 141 sts.

#### Edging

*Note 1: Remove the 2 central stitch markers, as all increases will now be made at the edges. Slip edge markers as you come to them.*

*Note 2: This section is also charted for your convenience.*

**Set Up Row (WS, MC):** Knit.

**Row 1 (RS, CC):** K2, [m1, k1] 2 times, m1, sl 1, \* k4, [sl 1] 2 times; rep from \* to last 3 sts, [m1, k1] 2 times, m1, k2 - 6 sts inc'd, 147 sts.

**Row 2 (WS, CC):** K2, p5, \* [sl 1] 2 times, p4; rep from \* to last 8 sts, sl 1, p5, k2.



**Row 3 (MC):** K2, [m1, k1] 2 times, m1, k3, sl 1, \* k4, [sl 1] 2 times; rep from \* to last 7 sts, k3, [m1, k1] 2 times, m1, k2 - 6 sts inc'd, 153 sts.

**Row 4 (MC):** K10, \* [sl 1] 2 times, k4; rep from \* to last 11 sts, sl 1, k10.

**Row 5 (CC):** K2, [m1, k1] 2 times, m1, k2, [sl 1] 2 times, k4, \* [sl 1] 2 times, k4; rep from \* to last 9 sts, [sl 1] 2 times, k3, m1, sl 1, m1, k1, m1, k2 - 6 sts inc'd, 159 sts.

**Row 6 (CC):** K2, p3, sl 1, p4, [sl 1] 2 times, \* p4, [sl 1] 2 times; rep from \* to last 9 sts, p7, k2.

**Row 7 (MC):** K2, [m1, k1] 2 times, m1, k5, \* [sl 1] 2 times, k4; rep from \* to last 6 sts, sl 1, [k1, m1] 3 times, k2 - 6 sts inc'd, 165 sts.

**Row 8 (MC):** K8, sl 1, \* k4, [sl 1] 2 times; rep from \* to last 12 sts, k12.

Rep Rows 1-8, 8 more times, then rep Rows 1-7, 1 more time - 216 sts inc'd, 381 sts.

Bind off all sts kwise over the next WS row with MC.

## FINISHING

Gently wash and block to finished measurements. Weave in ends.

Knit, Relax, Smile, Repeat!

2023 © Universal Yarn, Inc.

[www.universalyarn.com](http://www.universalyarn.com)

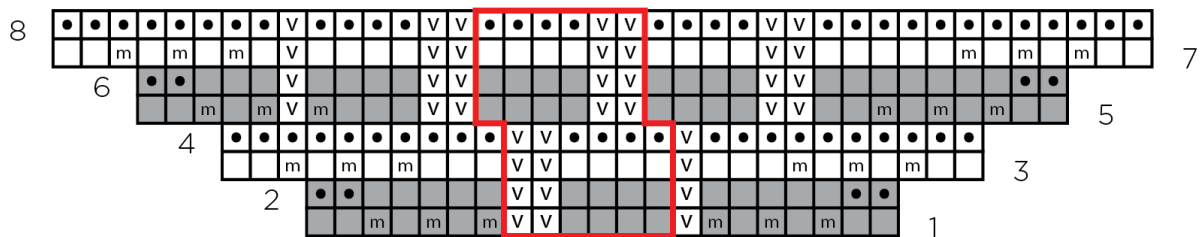
All rights reserved. This pattern may not be reproduced for business, trade or sale.

Questions? Contact [patterns@universalyarn.com](mailto:patterns@universalyarn.com)

## Abbreviations

*	indicates a repeat section
bef	before
CC	contrast color
inc('d)	increase(d)
k	knit
kwise	knitwise
m	marker
m1	insert left needle from front to back under horizontal strand of yarn lying between st just worked and next st, knit or purl this st through the back loop (1 st inc'd)
MC	main color
p	purl
pm	place marker
pwise	purlwise
rep	repeat
RS	right side
sl	slip
st(s)	stitch(es)
WS	wrong side
wyib	with yarn held in back
wyif	with yarn held in front

## Edging



## Key

- pattern repeat
- with MC, knit on RS, purl on WS
- with MC, purl on RS, knit on WS
- with MC, m1
- sl 1 pwise wyib on RS, sl 1 pwise wyif on WS
- with CC, knit on RS, purl on WS
- with CC, purl on RS, knit on WS
- with CC, m1

Knit, Relax, Smile, Repeat!

2023 © Universal Yarn, Inc.

[www.universalyarn.com](http://www.universalyarn.com)

All rights reserved. This pattern may not be reproduced for business, trade or sale.

Questions? Contact [patterns@universalyarn.com](mailto:patterns@universalyarn.com)