



## Pattern Collection: Women



### Maverick Cardigan

Designed by Rachel Brockman

#### SIZES

Extra Small (Small, Medium, Large, 1X, 2X, 3X, 4X, 5X)

#### FINISHED MEASUREMENTS

**Bust (with collar overlapping):** 32½ (36¼, 40, 43¾, 48½, 52¼, 56, 59¾, 64½)''

**Length:** 25¼ (25½, 26, 26¾, 27½, 28½, 30, 30¾, 30¾)''

#### MATERIALS

**Rozetti Cinema** (70% wool, 25% nylon, 5% cashmere; 100g/109 yds)

- 404 Stone (A) – 3 (3, 4, 4, 4, 5, 5, 6, 6) skeins
- 409 Orchid (B) – 3 (3, 3, 3, 4, 4, 4, 5, 5) skeins
- 406 Caribbean (C) – 2 (2, 3, 3, 3, 4, 4, 4) skeins
- 408 Blue Bell (D) – 2 (2, 2, 2, 2, 3, 3, 3, 3) skeins
- 407 Deep Dive (E) – 1 (1, 2, 2, 2, 2, 2, 2, 2) skeins

**Needles:** US Size 10 (6 mm) straight or your preferred needle for working flat or size needed to obtain gauge.

US Size 9 (5.5 mm) your preferred needle for working flat and 40'' circular or longer (to accommodate large number of sts)

*Knit. Relax. Smile. Repeat!*

2019 © Universal Yarn, Inc.

All rights reserved.

[www.universalyarn.com](http://www.universalyarn.com)

This pattern may not be reproduced for business, trade or sale.

**Notions:** Tapestry needle, removable stitch markers, stitch holders or waste yarn

### GAUGE

13 sts x 17 rows = 4" in Stripe Sequence patt with larger ndl

**Save time check your gauge.**

For questions about this pattern, please contact [patterns@universalyarn.com](mailto:patterns@universalyarn.com).

### PATTERN NOTES

The Maverick Cardigan is a perfect wear-with-all sweater in our super cozy *Cinema* yarn. A fun and colorful stripe pattern decorates the body of this cardigan, which makes it easy to pair with any top! The oversized ribbed shawl collar is the finishing touch and is sure to make you want to wrap yourself and snuggle in immediately.

This cardigan is knit flat. The body is knit in one piece, beginning with the back hem. The left and right front are separated at the neck and worked separately. The sleeves and collar are knit separately. The pieces are then seamed together. When working in the Stripe Sequence pattern, change colors as indicated on chart. Break yarn after each color change. Weave in ends as you go to save time.

### SITCH GUIDE

#### K1, P1 Rib

*(Multiple of 2 sts, plus 1)*

**Row 1 (RS):** \* K1, p1; rep from \* to last st, k1.

**Row 2 (WS):** P1, \* k1, p1; rep from \* to end.

Rep Rows 1-2 for patt.

### BODY

#### Back Hem

With smaller ndl and color C, cast on 55 (61, 67, 73, 81, 87, 93, 99, 107) sts.

Work in K1, P1 until piece meas 2½" from cast-on edge, ending with Row 2 of patt. Change to larger ndl.



### Stripe Section

*Note: Change colors as indicated on chart.*

**Row 1 (RS):** Work Row 1 of Stripe Sequence patt to end.

**Row 2 (WS):** Work Row 2 of Stripe Sequence patt to end.

**Row 3:** Work next row of Stripe Sequence patt to end.

Cont as est'd until piece meas 19½ (19½, 19½, 20, 20, 20, 20½, 20½, 20½)".

Place removable markers on each side to denote Armholes. Cont as est'd until piece meas 5¾ (6, 6½, 6¾, 7½, 8½, 9½, 10¼, 10¼)" from Armhole markers, ending with a WS row.

### Separate for Left and Right Front

**Next Row (RS):** Cont as est'd over 16 (19, 22, 25, 29, 32, 35, 38, 42) Right Front sts, bind off center 23 Neck sts, cont as est'd over 16 (19, 22, 25, 29, 32, 35, 38, 42) Left Front sts. Place Right Front sts on holder or waste yarn.

*Knit. Relax. Smile. Repeat!*

2019 © Universal Yarn, Inc.

All rights reserved.

[www.universalyarn.com](http://www.universalyarn.com)

This pattern may not be reproduced for business, trade or sale.

### **Left Front**

**Next Row (WS):** Cont as est'd to end.

Cont in Stripe Sequence as est'd until piece meas 5¾ (6, 6½, 6¾, 7½, 8½, 9½, 10¼, 10¼)" from Neck bind-off.

Place removable markers on each side to denote Armhole.

Cont as est'd until piece meas 17 (17, 17, 17½, 17½, 17½, 18, 18, 18)" from Front Armhole marker, ending with a WS row. Change to smaller ndl. Cont with color C only.

### **Left Front Hem**

Work in K1, P1 Rib until piece meas 19½ (19½, 19½, 20, 20, 20, 20½, 20½, 20½)". Bind off all sts in patt.

### **Right Front**

Return Right Front sts to ndl, ready to work a WS row.

**Next Row (WS):** Cont as est'd to end.

Cont in Stripe Sequence patt as est'd until piece meas 5¾ (6, 6½, 6¾, 7½, 8½, 9½, 10¼, 10¼)" from Neck bind-off.

Place removable markers on each side to denote Armhole.

Cont as est'd until piece meas 17 (17, 17, 17½, 17½, 17½, 18, 18, 18)" from Front Armhole marker, ending with a WS row. Change to smaller ndl. Cont with color C only.

### **Right Front Hem**

Work in K1, P1 Rib until piece meas 19½ (19½, 19½, 20, 20, 20, 20½, 20½, 20½)". Bind off all sts in patt.

## **SLEEVES**

With smaller ndl and D, cast on 25 (25, 25, 25, 27, 27, 27, 27, 27) sts.

Work in K1, P1 until piece meas 3½" from cast-on edge, ending with Row 2 of patt. Change to larger ndl.

### **Establish Pattern**

*Note: Change colors as indicated in chart.*

**Row 1 (RS):** Work Row 1 of Stripe Sequence patt to end.

**Row 2 (WS):** Work Row 2 of Stripe Sequence patt to end.

Rows 1-2 establish patt.

### **Shape Sleeve**

*Note: Maintain Stripe Sequence patt as established throughout sleeve shaping.*

**Inc Row (RS):** K1, m1R, cont as est'd to last 2 sts, m1L, k1 – 2 sts inc'd, 27 (27, 27, 27, 29, 29, 29, 29, 29) sts.

Rep Inc Row every 8 (8, 6, 4, 4, 4, 2, 2, 2) rows, 0 (5, 6, 0, 3, 12, 6, 10, 10) more times, then rep Inc Row every 10 (10, 8, 6, 6, 6, 4, 4, 4) rows, 5 (1, 2, 9, 7, 1, 11, 9, 9) time(s) – 10 (12, 16, 18, 20, 26, 34, 38, 38) sts inc'd, 37 (39, 43, 45, 49, 55, 63, 67, 67) sts.

Work even in patt as est'd until piece meas 19" from cast-on edge, ending with a WS row. Bind off all sts.

## **COLLAR**

With smaller circ ndl and color A, cast on 187 (189, 191, 197, 201, 209, 217, 223, 223) sts. Work in K1, P1 until piece meas 9" from cast-on edge, ending with Row 2 of patt. Bind off all sts in patt.

## **FINISHING**

Gently wash and block pieces to finished measurements. Weave in ends. Sew Sleeves to Body using removable markers as a guide. Sew Sleeve and Side seams. Sew Collar to Body. Weave in rem ends.

*Knit. Relax. Smile. Repeat!*

2019 © Universal Yarn, Inc.

All rights reserved.



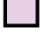


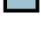
[www.universalyarn.com](http://www.universalyarn.com)

This pattern may not be reproduced for business, trade or sale.

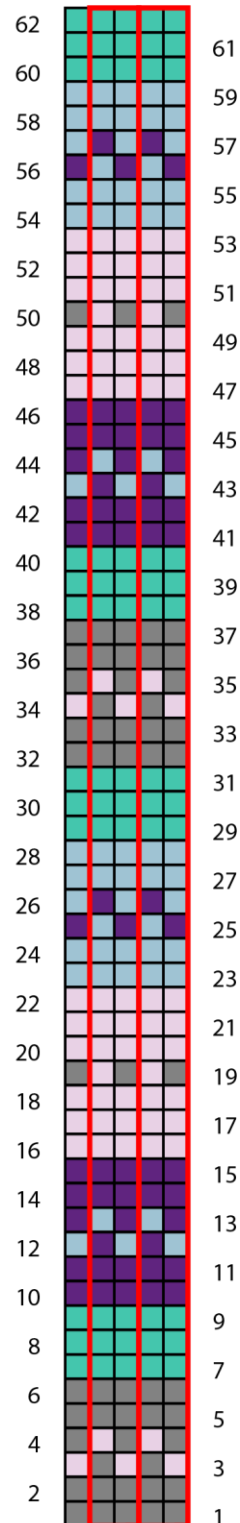
## Abbreviations

<b>circ</b>	circular
<b>cont</b>	continue
<b>est'd</b>	established
<b>inc('d)</b>	increase(d)
<b>k</b>	knit
<b>m1L</b>	insert left needle from front to back under horizontal strand of yarn lying between st just worked and next st, knit or purl this st through the back loop (1 st inc'd)
<b>m1R</b>	insert left needle from back to front under horizontal strand of yarn lying between st just worked and next st, knit or purl this st through the front loop (1 st inc'd)
<b>meas</b>	measures
<b>ndl</b>	needle
<b>p</b>	purl
<b>patt</b>	pattern
<b>rep</b>	repeat
<b>RS</b>	right side
<b>st(s)</b>	stitch(es)
<b>WS</b>	wrong side

## Key

	pattern repeat
	with A, knit on RS, purl on WS
	with B, knit on RS, purl on WS
	with C, knit on RS, purl on WS
	with D, knit on RS, purl on WS
	with E, knit on RS, purl on WS

## Stripe Sequence



*Knit. Relax. Smile. Repeat!*

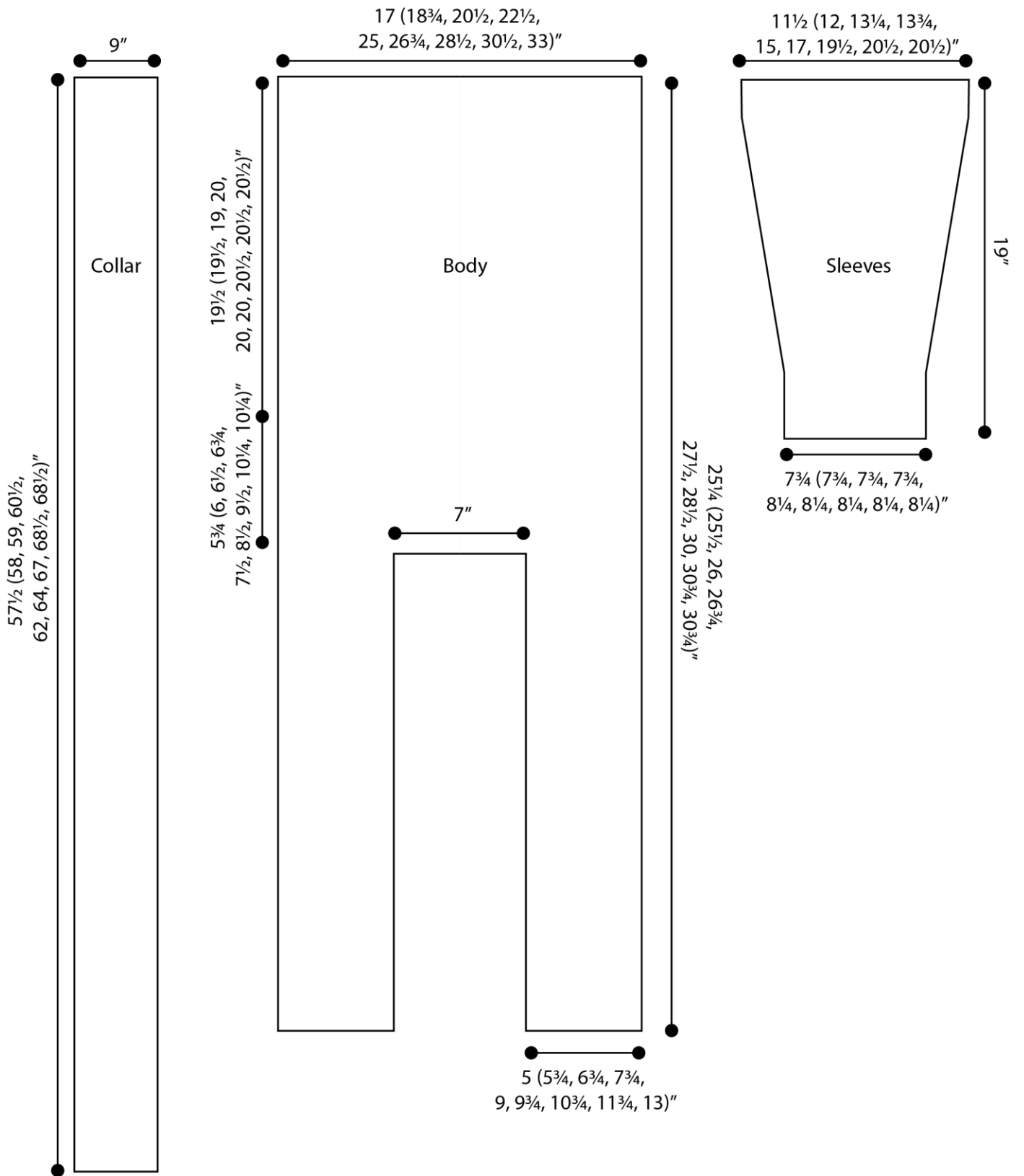
2019 © Universal Yarn, Inc.

All rights reserved.

[www.universalyarn.com](http://www.universalyarn.com)

This pattern may not be reproduced for business, trade or sale.





*Knit. Relax. Smile. Repeat!*

2019 © Universal Yarn, Inc.

All rights reserved.

[www.universalyarn.com](http://www.universalyarn.com)

This pattern may not be reproduced for business, trade or sale.