



## PATTERN COLLECTION

### Accessories



#### Marion Stole

Designed by Aubrey Busek

#### DIFFICULTY

Intermediate

#### SIZES

One Size

#### FINISHED MEASUREMENTS

Width: 19½"

Length: 67½"

#### MATERIALS

**Fibra Natura Flax Lace** (100% linen; 100g/547 yds)

- 112 Silver - 2 hanks

**Needle:** US Size 5 (3.75 mm) 24" or longer circ ndl (to accommodate large number of sts) *or size needed to obtain gauge*

**Notions:** Tapestry needle, stitch markers

#### GAUGE

21 sts x 28 rows = 4" In Staircase Lace

Save time, check your gauge.

Knit, Relax, Smile, Repeat!

2021 © Universal Yarn, Inc.

[www.universalyarn.com](http://www.universalyarn.com)

All rights reserved. This pattern may not be reproduced for business, trade or sale.

Questions? Contact [patterns@universalyarn.com](mailto:patterns@universalyarn.com)

## PATTERN NOTES

Whether you need an elegant wrap for a garden party, or you just want something lovely to enhance your outfit, the Marion stole is sure to grab attention. Although delicate, the lace stitch pattern is repeated constantly throughout, making this project less intimidating than it may seem. Flax Lace provides an airy, ethereal appearance, and 100% linen fiber makes this accessory perfect for Summer.

This stole is knit flat from the bottom up. Stitch patterns are both written and charted.

## STITCH GUIDE

### Staircase Lace

(multiple of 9 sts)

**Row 1 (RS):** \* [K1, yo, ssk] 2 times, yo, k3tog, yo; rep from \* to end.

**WS Rows 2-6:** Purl.

**Row 3:** \* K2, yo, ssk, k2, yo, k3tog, yo; rep from \* to end.

**Row 5:** \* K3, yo, ssk, k1, yo, k3tog, yo; rep from \* to end.

Rep Rows 1-6 for patt.

### Edging Lace

(begins as a panel of 12 sts)

**Row 1 (RS):** K3, yo, k5, yo, k2tog, yo, k2 – 2 sts inc'd, 14 sts.

**Row 2 (WS):** K2, p12.

**Row 3:** K4, S2KP2, k2, [yo, k2tog] 2 times, k1.

**Row 4:** K2, p10 – 2 sts dec'd, 12 sts.

**Row 5:** K3, ssk, k2, [yo, k2tog] 2 times, k1 – 1 st dec'd, 11 sts.

**Row 6:** K2, p9.

**Row 7:** K2, ssk, k2, [yo, k2tog] 2 times, k1 – 1 st dec'd, 10 sts.

**Row 8:** K2, p8.

**Row 9:** K1, ssk, k2, [yo, k2tog] 2 times, k1 – 1 st dec'd, 9 sts.

**Row 10:** K2, p7.

**Row 11:** Ssk, k2, yo, k1, yo, k2tog, yo, k2 – 1 st inc'd, 10 sts.

**Row 12:** K2, p8.

**Row 13:** [K3, yo] 2 times, k2tog, yo, k2 – 2 sts inc'd, 12 sts.

**Row 14:** K2, p10,

Rep Rows 1-14 for patt.



## STOLE

*Note 1: We recommend placing markers between pattern repeats to help you stay on track.*

*Note 2: Due to the increases and decreases in the Edging Lace patt, stitch counts will fluctuate throughout.*

Cast on 104 sts.

**Row 1 (RS):** K2, pm, work Row 1 of Staircase Lace to last 12 sts, pm, work Row 1 of Edging Lace to end. Staircase Lace patt will be repeated 10 times across each row.

**Row 2 (WS):** Work Row 2 of Edging Lace to m, sl m, work Row 2 of Staircase Lace to last 2 sts, sl m, k2.

Cont working in patt as est'd, continuously repeating Rows 1-6 of Staircase Lace and Rows 1-14 of Edging Lace until piece meas approx 67½" from cast-on edge, ending with a WS row. Loosely bind off all sts.

## FINISHING

Weave in ends but do not trim. Wet or steam block, stretching to enhance lace. Once piece is fully dry, trim ends close to work.

Knit, Relax, Smile, Repeat!

2021 © Universal Yarn, Inc.

[www.universalyarn.com](http://www.universalyarn.com)

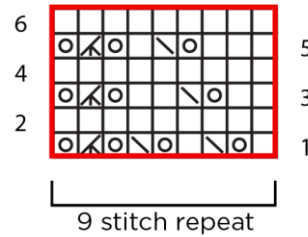
All rights reserved. This pattern may not be reproduced for business, trade or sale.

Questions? Contact [patterns@universalyarn.com](mailto:patterns@universalyarn.com)

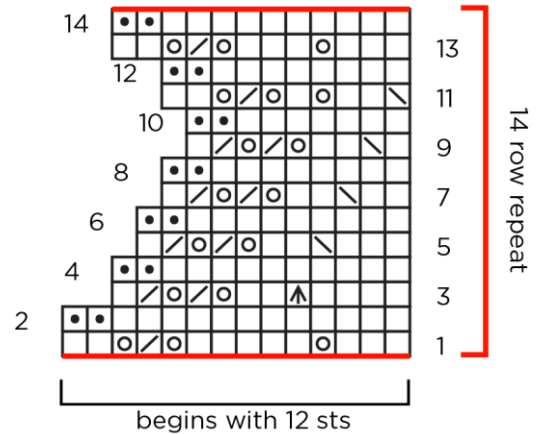
## Abbreviations

approx	approximately
cont	continue
dec('d)	decrease(d)
est'd	established
inc('d)	increase(d)
k	knit
k2tog	knit 2 stitches together (1 st dec'd)
k3tog	knit 3 stitches together (2 sts dec'd)
m	marker
meas	measures
ndl	needle
p	purl
patt	pattern
pm	place marker
rep	repeat
RS	right side
S2KP2	slip 2 stitches as if to knit 2 together, knit 1, pass 2 slipped stitches over knit stitch; centered double decreases
sl	slip
ssk	slip next 2 sts individually knitwise, slip them back to left needle in this position, knit them together through the back loops (1 st dec'd)
st(s)	stitch(es)
WS	wrong side
yo	yarn over

## Staircase Lace



## Edging Lace



## Key

- pattern repeat
- knit on RS, purl on WS
- purl on RS, knit on WS
- yo
- \ ssk
- / k2tog
- / k3tog
- ^ S2KP2

Knit, Relax, Smile, Repeat!

2021 © Universal Yarn, Inc.

[www.universalyarn.com](http://www.universalyarn.com)

All rights reserved. This pattern may not be reproduced for business, trade or sale.

Questions? Contact [patterns@universalyarn.com](mailto:patterns@universalyarn.com)