



MARA

Textured Cowl



Mara

Designed by Rachel Brockman

DIFFICULTY

Easy

SIZES

One Size

FINISHED MEASUREMENTS

Circumference: 31½"

Length: 13½"

MATERIALS

Universal Yarn *Truva* (50% cashmere, 50% cotton; 50g/164 yds)

- 104 Harbor – 3 balls

Needle: US Size 7 (4.5 mm) 24" circular
or size needed to obtain gauge

US Size 6 (4 mm) 24" circular

Notions: Tapestry needle, stitch markers

GAUGE

21 sts x 32 rnds = 4" in Section 1 or 2 patt
with larger ndl

Save time, check your gauge.

MARA

PATTERN NOTES

Adorn yourself with eye-catching texture. Mara's pattern uses straightforward stitches, but the final result is anything but simple. Truva's blend of cotton and cashmere makes this engaging stitch sampler a treat to knit and wear!

This cowl is knit seamlessly in the round from the bottom up.

STITCH GUIDE

Section 1

(multiple of 55 sts)

Rnd 1: * P1, [k2, p2] 4 times, k2, p1, k1 tbl, [p1, k1] 8 times, [p1, k1 tbl] 2 times, [k3, k1 tbl] 3 times, p1, k1 tbl; rep from * to end.

Rnd 2: * [K2, p2] 5 times, k1 tbl, [k1, p1] 8 times, [k1, k1 tbl] 2 times, [p3, k1 tbl] 3 times, k1, k1 tbl; rep from * to end.

Rnd 3: * K1, [p2, k2] 4 times, p2, k1, k1 tbl, [p1, k1] 8 times, [p1, k1 tbl] 2 times [k3, k1 tbl] 3 times, p1, k1 tbl; rep from * to end.

Rnd 4: * [P2, k2] 5 times, k1 tbl, [k1, p1] 8 times, [k1, k1 tbl] 2 times, [p3, k1 tbl] 3 times, k1, k1 tbl; rep from * to end.

Rep Rnds 1-4 for patt.

Section 2

(multiple of 55 sts)

Rnd 1: * P1, [k2, p2] 4 times, k2, p1, k1 tbl, [p1, k1] 8 times, p1, k1 tbl, k15, k1 tbl; rep from * to end.

Rnd 2: * [P2, k2] 5 times, k1 tbl, [p1, k1] 8 times, p1, k1 tbl, k15, k1 tbl; rep from * to end.

Rnd 3: * K1, [p2, k2] 4 times, p2, k1, k1 tbl,

[k1, p1] 8 times, k1, k1 tbl, k15, k1 tbl; rep from * to end.

Rnd 4: * [K2, p2] 5 times, k1 tbl, [k1, p1] 8 times, k1, k1 tbl, p15, k1 tbl; rep from * to end.

Rep Rnds 1-4 for patt.

PATTERN BEGINS

COWL

Lower Edge

With smaller ndl, cast on 165 sts. PM and join to knit in the rnd, being careful not to twist.

Rnd 1: Purl.

Rnd 2: Knit.

Rep Rnds 1-2, 1 more time. Change to larger ndl.

Texture Section 1

Note: We recommend placing markers between each pattern repeat to help you stay on track.

Work Rnds 1-4 of Section 1 patt, 5 total times. Patt will be repeated 3 times across each rnd.

Texture Section 2

Note: We recommend placing markers between each pattern repeat to help you stay on track.

Work Rnds 1-4 of Section 2 patt, 5 total times. Patt will be repeated 3 times across each rnd.

Texture Section 3

MARA

Work as for Texture Section 1.

Texture Section 4

Work as for Texture Section 2.

Texture Section 5

Work as for Texture Section 1.

Change to smaller ndl.

Upper Edge

Rnd 1: Knit.

Rnd 2: Purl.

Rep Rnds 1-2, 1 more time. Bind off all sts kwise.

FINISHING

Gently wash and block to finished measurements. Weave in ends.

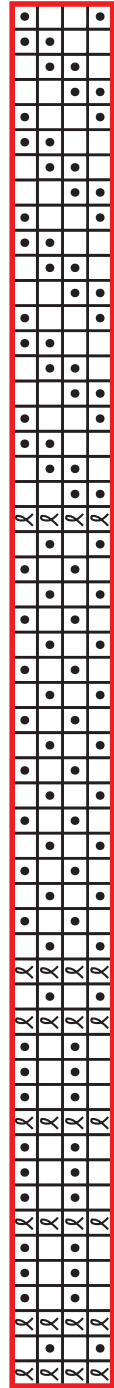


MARA

repeat 5 times

4 3 2 1

Section 1

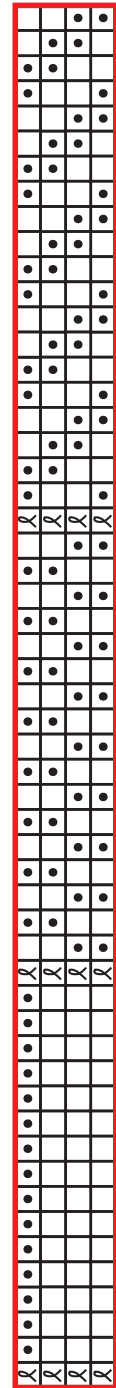


55 stitch repeat

repeat 5 times



4 3 2 1

Section 2



55 stitch repeat

Key

-  pattern repeat
-  knit on RS, purl on WS
-  purl on WS, knit on RS
-  k1 tbl on RS, p1 tbl on WS



ABBREVIATIONS

approx	approximately
bef	before
beg	begin(ning)
BL	back loop
blo	back loop only
bor	beginning of round
BP st	back post stitch
BPdc	back post double crochet
CC	contrast color
ch	chain
ch(s)	chain(s)
circ	circular
cont	continue
dc	double crochet
dec('d)	decrease(d)
dpn(s)	double pointed needle(s)
est'd	established
Fhdc	Foundational half double crochet
FL	front loop
foll	follow
FP st	front post stitch
FPdc	front post double crochet
garter st	knit every row
hk	hook
inc('d)	increase(d)
k	knit
k2tog	knit 2 stitches together (1 st dec'd)
k3tog	knit 3 stitches together (2 sts dec'd)
kwise	knitwise
LH	left hand
lp(s)	loop(s)
m	marker
m1L	insert left needle from front to back under horizon tal strand of yarn lying between st just worked and next st, knit or purl this st through the back loop (1 st inc'd)

m1R	insert left needle from back to front under horizontal strand of yarn lying between st just worked and next st, knit or purl this st through the front loop (1 st inc'd)
meas	measures
ndl	needle
p	purl
p2tog	purl 2 sts together (1 st dec'd)
patt	pattern
pm	place marker
pwise	purlwise
rem	remain(ing)
rep	repeat
RH	right hand
rnd	round
RS	right side
sc	single crochet
sc2tog	single crochet 2 stitches together
sk	skip
sl st	slip stitch
sl	slip
sp	space(s)
ssk	slip next 2 sts individually knitwise, slip them back to left needle in this posi- tion, knit them together through the back loops (1 st dec'd)
St st	Stockinette stitch (knit on RS rows, purl on WS rows; in the rnd, knit every rnd)
st(s)	stitch(es)
tbl	through the back loop(s)
tog	together
WS	wrong side
yo	yarn over

TRUVA

Good things come in small packages, and such is the case with this Italian-milled yarn, **Truva**. A luxe blend of cashmere and cotton, Truva is a standout yarn for every season. Both heathered and marled in appearance, Truva's exquisite palette shines in the simplest of stitch patterns, while inviting intrigue when worked in more textural motifs. We love this yarn for luxurious garments and accessories.

50% Cashmere, 50% Cotton
50g / 164 yds
Light Weight
8 Gorgeous Colors





DISTRIBUTION

Universal Yarn
5991 Caldwell Park Drive
Harrisburg, NC 28075
Tel: 877.864.9276
Fax: 704.454.1029
e-mail: patterns@universalyarn.com
www.universalyarn.com

CANADA

H.A. Kidd & Company
5 Northline Rd
Toronto, ON M4B 3P2
Tel: 800.387.1753
Fax: 416.364.4860
email: info1@hakidd.com
www.hakidd.com

TURKEY

Defne
DEMIRTAS ORGANIZE SANAYI BÖLGESİ
ZAMBAK SOKAK NO:3
OSMANGAZI/Bursa
Tel: 90.224.261.3347-48
Fax: 90.224.261.3332
e-mail: info@defneiplikpazarlama.com

ACKNOWLEDGEMENTS

DESIGNERS

Ashley Jane McIntyre
Aubrey Busek
Rachel Brockman

TECHNICAL EDITORS

Aubrey Busek
Amy Gunderson
Jennifer Kelly Sadler
Rachel Brockman

PROOFREADERS

Ashley Jane McIntyre
Aubrey Busek
Heather Hill
Robert Ferrel

PHOTOGRAPHER

Salt Paper Studio

STYLIST + HAIR & MAKEUP

Janis Mara

MODEL

Brooke Everson

