



Pattern Collection: Women



Lucky Star Tee

Designed by Universal Yarn Design Team

SIZE

Tee is sized to fit Women's Extra Small (Small, Medium, Large, 1X, 2X)

Shown in Small size

FINISHED MEASUREMENTS

Bust: 33 (37, 41, 45, 49, 53)"

Length: 23½ (24, 24¾, 25, 25¾, 26¼)"

Upper Arm: 14¼ (15¼, 16¼, 16¾, 18½, 19½)"

MATERIALS

Universal Yarn *Radiant Cotton* (100% cotton; 100g/203 yds)

- 802 Viola – 4 (4, 5, 5, 6, 6) skeins

Needles: US Size 7 (4.5 mm) 24" circular needle, US Size 5 (3.75mm) 16" circular needle *or size needed to obtain gauge*

Notions: Stitch markers, tapestry needle, waste yarn or stitch holders

GAUGE

16 sts x 30 rows = 4" in Mesh Stripe pattern with larger needle

19 sts x 28 rows = 4" in K1, P1, Ribbing pattern with smaller needle

Save time, check your gauge.

Knit. Relax. Smile. Repeat!

2016 © Universal Yarn, Inc.

All rights reserved.

www.universalyarn.com

This pattern may not be reproduced for business, trade or sale.

STITCH GUIDE

K1, P1, Ribbing

(even number of sts)

Row 1: * K1, p1; rep from * to end.

Rep Row 1 for patt.

K1, P1, Ribbing in the Round

(even number of sts)

Rnd 1: * K1, p1; rep from * to end.

Rep Rnd 1 for patt.

Mesh Stripe

(even number of sts)

Row 1 (RS): K1, * k2tog, yo; rep from * to last st, k1.

WS Rows 2-14: Purl.

Row 3: K1, * yo, k2tog; rep from * to last st, k1.

Row 5: Purl.

Row 7: K1, * yo, ssk; rep from * to last st, k1.

Row 9: K1, * ssk, yo; rep from * to last st, k1.

Rows 11 and 13: As Row 5.

Rep Rows 1-14 for patt.

PATTERN NOTES

This tee is worked from the bottom up in pieces and seamed. The shoulders are joined with a three-needle bind-off and the neck edging is worked in the round after the tee is seamed.

BACK

With smaller ndl, cast on 68 (76, 84, 92, 100, 108) sts. Work in K1, P1, Ribbing for 10 rows, or until piece meas approx. 1.5" from cast-on edge. Switch to larger ndl; work 8 reps (112 rows) of Mesh Stripe patt.

Shape Sleeves

(Read through this entire section before proceeding.)

Cont in Mesh stripe patt, at the end of the next 2 rows, cast on 17 (17, 19, 19, 21, 21) sts – 34 (34, 38, 38, 42, 42) sts inc'd, 102 (110, 122, 130, 142, 150) sts. Work the first and last st of each row even in St st, work rem sts even in patt. Work even for 30 (34, 38, 40, 46, 50) rows, or until sleeves meas approx. 4¼ (4¾, 5½, 5¾, 6½, 7)" from cast-on edge, end with a WS row.

Shape Neck

(Maintain the first and last st of each row in St st throughout shaping.)

Work 45 (48, 54, 57, 63, 66) sts in patt, bind off 12 (14, 14, 16, 16, 18) sts, work to end of row.

Place the Left Back sts on waste yarn or stitch holder - 45 (48, 54, 57, 63, 66) sts held and 45 (48, 54, 57, 63, 66) on working ndl. Work WS row even in patt.

Row 1 (RS): Bind off 4 sts, work in patt to end – 4 sts dec'd, 41 (44, 50, 53, 59, 62) sts rem.

Row 2: Work even in patt.

Row 3: Bind off 2 sts, work in patt to end – 2 sts dec'd, 39 (42, 48, 51, 57, 60) sts rem.

Row 4: Work even in patt.

Row 5: K1, ssk, work in patt to end – 1 st dec'd.

Row 6: Work even in patt.

Rep Row 5 and 6, 7 more times – 7 sts dec'd, 31 (34, 40, 43, 49, 52) sts rem. Work 2 rows even in patt, place sts on waste yarn or stitch holder.

Place Left Back sts on working ndl and join yarn with RS facing. Work RS row even in patt.

Row 1 (WS): Bind off 4 sts, work in patt to end – 4 sts dec'd, 41 (44, 50, 53, 59, 62) sts rem.

Row 2 (RS): Work even in patt.

Row 3: Bind off 2 sts, work in patt to end – 2 sts dec'd, 39 (42, 48, 51, 57, 60) sts rem.

Row 4: Work in patt to last last 3 sts, k2tog, k1 – 1 st dec'd.

Row 5: Work even in patt.

Rep Row 4 and 5, 7 more times – 7 sts dec'd, 31 (34, 40, 43, 49, 52) sts rem. Work 3 rows even in patt, place sts on waste yarn or stitch holder.

FRONT

Work as for Back. Join shoulders with 3-ndl bind-off.

FINISHING

Sleeve Cuffs

With smaller ndl, pick up and knit 70 (76, 82, 84, 92, 98) sts at end of Sleeve. Work even in K1, P1, Ribbing until Cuff meas approx. 1", bind off loosely in rib. Rep for other Sleeve.

Knit. Relax. Smile. Repeat!

2016 © Universal Yarn, Inc.

All rights reserved.

www.universalyarn.com

This pattern may not be reproduced for business, trade or sale.

Neck Band

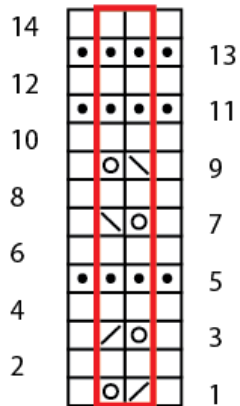
With smaller ndl, pick up and knit 84 (88, 88, 92, 92, 96) sts around neck opening, pm. Work even in K1, P1, Ribbing in the Round until Neck Band meas approx. 1", bind off loosely in rib.

Wash and block to schematic meas. Seam sides and Sleeves, weave in all ends.

Abbreviations

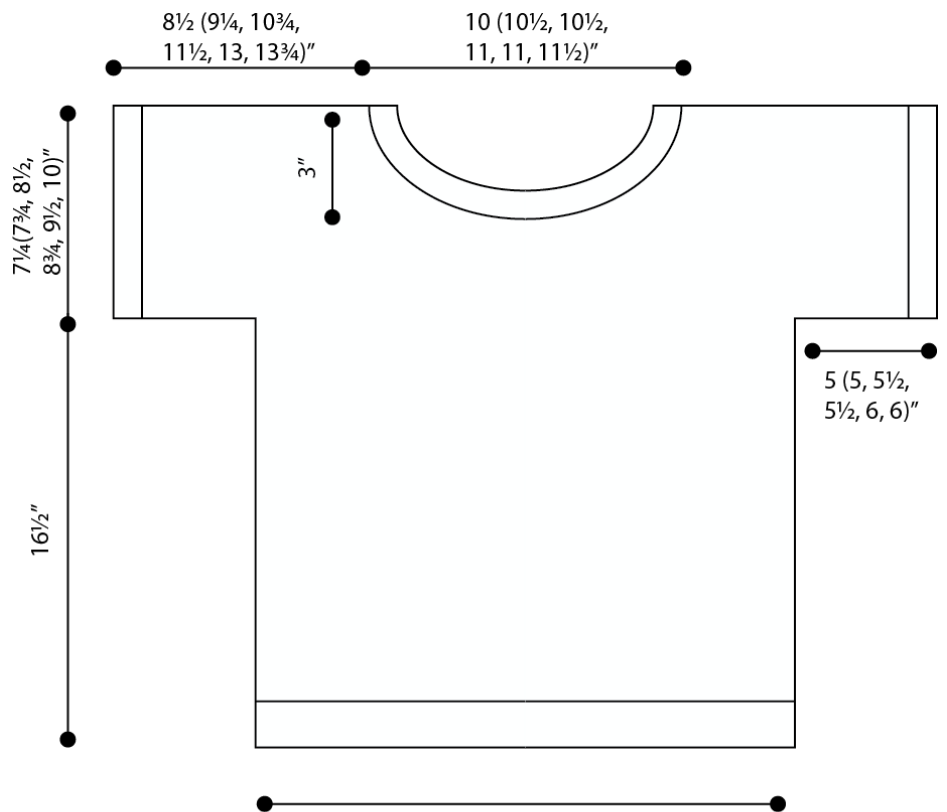
approx	approximately
cont	continue
dec('d)	decrease(d)
k	knit
k2tog	knit 2 stitches together (1 st dec'd)
meas	measures
ndl	needle
patt	pattern
p	purl
pm	place marker
rep	repeat
rnd	round
ssk	slip next 2 sts individually knitwise, slip them back to left needle in this position, knit them together through the back loops (1 st dec'd)
st(s)	stitch(es)
St st	Stockinette stitch (knit on RS rows, purl on WS rows; in the rnd, knit every rnd)
yo	yarn over

Mesh Stripe



Key

- patt rep
- k on RS, p on WS
- o
 yo
- /
 ssk
- \
 k2tog



Knit. Relax. Smile. Repeat!

17 (19, 21,
23, 25, 27)"

2016 © Universal Yarn, Inc.

All rights reserved.

www.universalyarn.com

This pattern may not be reproduced for business, trade or sale.