



## Pattern Collection: Women



### Lounge Pullover

Designed by Universal Yarn Design Team

#### SIZES

Extra Small (Small, Medium, Large, 1X, 2X, 3X)

Model has a 34" bust and is wearing size Small.

#### FINISHED MEASUREMENTS

**Bust:** 45¼ (50, 54¾, 64¼, 69¼, 74)"

**Length:** 21 (21½, 22½, 23, 24, 24½, 25½)"

#### MATERIALS

**Universal Yarn Bella Chenille** (100% polyester; 100g/131 yds)

- 119 Misty – 5 (5, 6, 6, 7, 7, 8) balls

**Needles:** US Size 10 (6 mm) straight or size needed to obtain gauge

US Size 9 (5.5 mm) straight and 16" circular, or size needed to obtain gauge

**Notions:** Tapestry needle, stitch holders or waste yarn, stitch markers, 6 removable stitch markers, cable needle (cn)

#### GAUGE

10 sts x 18 rows = 4" in Reverse Stockinette Stitch using larger ndl

**Save time, check your gauge.**

*Knit. Relax. Smile. Repeat!*

2018 © Universal Yarn, Inc.

All rights reserved.

[www.universalyarn.com](http://www.universalyarn.com)

This pattern may not be reproduced for business, trade or sale.

## PATTERN NOTES

Knit in Bella Chenille, the Lounge Pullover is amazingly soft. It's a splendid sweater to throw on after a long day at work or on a lazy weekend. This pattern is designed to be very roomy, so choose a size with approximately 10-15 inches of positive ease.

The body of the Lounge Pullover is knit in pieces from the bottom-up. Shoulder sts are joined using the 3-needle bind-off, then the sleeve sts are picked up and knit from the top-down.

## STITCH GUIDE

### 2x1 Left Purl Cross (LPC)

Sl next 2 sts to cn and hold in front, p1 from left ndl, k2 from cn.

### 2x1 Right Purl Cross (RPC)

Sl next st to cn and hold in back, k2 from left ndl, p1 from cn.

### 2x2 Left Cross (LC)

Sl next 2 sts to cn and hold in front, k2 from left ndl, k2 from cn.

### 2x2 Right Cross (RC)

Sl next 2 sts to cn and hold in back, k2 from left ndl, k2 from cn.

### K1, P2 Twisted Rib

*(worked flat over a multiple of 3 + 2 sts)*

**Row 1 (RS):** P2, \* K1 tbl, p2; rep from \* to end.

**Row 2 (WS):** \* K2, p1 tbl; rep from \* to last 2 sts, k2.

Rep Rows 1-2 for patt.

### K1, P2 Twisted Rib

*(worked in the round over a multiple of 3 sts)*

**Rnd 1:** \* K1tbl, p2; rep from \* to end.

Rep Rnd 1 for patt.

### Center Panel

*(panel of 12 sts)*

**Row 1 (RS):** Purl to end.

**Row 2 (WS):** Knit to end.

**RS Rows 3-5:** P3, k6, p3.

**WS Rows 4-6:** K3, p6, k3.

**Row 7:** P2, 2x1 RPC, k2, 2x1 LPC, p2.

**Row 8:** K2, p2, k1, p2, k1, p2, k2.

**Row 9:** P1, 2x1 RPC, p1, k2, p1, 2x1 LPC, p1.

**Row 10:** K1, [p2, k2] 2 times, p2, k1.

**Row 11:** 2x1 RPC, p2, k2, p2, 2x1 LPC.

**Row 12:** [P2, k3] 2 times, p2.

Rep Rows 1-12 for patt.

### Front Staircase Cable

*(panel of 9 sts)*

**Row 1 (RS):** 2x2 RC, k1 tbl, k4.

**WS Rows 2-4:** P4, p1 tbl, p4.

**Row 3:** K4, k1 tbl, 2x2 LC.

Rep Rows 1-4 for pattern.

### Sleeve Staircase Cable

*(panel of 19 sts)*

**Row 1 (RS):** 2x2 RC, k1 tbl, k4, k1 tbl, 2x2 RC, k1 tbl, k4.

**WS Rows 2-4:** \* P4, p1 tbl; rep from \* to last 4 sts, p4.

**Row 3:** K4, k1 tbl, 2x2 LC, k1 tbl, k4, k1 tbl, 2x2 LC.

Rep Rows 1-4 for pattern.

## SWEATER

### Front

With smaller straight ndl, cast on 58 (64, 70, 76, 82, 88, 94) sts.

**Row 1 (RS):** K1, work in K1, P2 Twisted Rib to last st, k1.

**Row 2 (WS):** P1, work in K1, P2 Twisted Rib to last st, p1.

Rep Rows 1-2 for 2", ending with a WS row.

Change to larger ndl.

### Front Body

**Set up Row 1 (RS):** K1, p1 (4, 5, 8, 9, 12, 13), pm, work Front Staircase Panel across 9 sts, pm, p12 (12, 14, 14, 16, 16, 18), pm, work Center Panel across 12 sts, pm, p12 (12, 14, 14, 16, 16, 18), pm, work Front Staircase Panel across 9 sts, pm, purl to last st, k1.

**Set up Row 2 (WS):** P1, k1 (4, 5, 8, 9, 12, 13), sl m, work Front Staircase Panel to m, sl m, k12 (12, 14, 14, 16, 16, 18), sl m, work Center Panel to m, sl m, k12 (12, 14, 14, 16, 16, 18), sl m, work Front Staircase Panel to m, sl m, knit to last st, p1.

*Knit. Relax. Smile. Repeat!*

2018 © Universal Yarn, Inc.

All rights reserved.

[www.universalyarn.com](http://www.universalyarn.com)

This pattern may not be reproduced for business, trade or sale.

**Row 1:** K1, purl to m, sl m, work Front Staircase Panel to m, sl m, purl to m, sl m, work Center Panel to m, sl m, purl to m, sl m, work Front Staircase Panel to m, sl m, purl to last st, k1.

**Row 2:** P1, knit to m, sl m, work Front Staircase Panel to m, sl m, knit to m, sl m, work Center Panel to m, sl m, knit to m, sl m, work Front Staircase Panel to m, sl m, knit to last st, p1.

Rep Rows 1-2 until piece meas 7½ (7½, 8, 8, 8½, 8½, 9)“ from cast-on edge. Place removable markers on each side to mark beg of armhole.

Cont in patt as est’d until piece meas 14½ (15, 16, 16, 17, 17½, 18)“ from cast-on edge., ending with a WS row.

### Shape Front Neck

*Note: During Neck shaping, continue in pattern as established.*

**Row 1 (RS):** Cont as est’d over 28 (31, 34, 37, 40, 43, 46) Left Front sts, join new ball of yarn and bind off 2 Neck sts, cont as est’d over rem 28 (31, 34, 37, 40, 43, 46) Right Front sts.

### Right Front

**Row 1 (WS):** Cont as est’d to end.

**Dec Row (RS):** K1, ssp, cont as est’d to end – 1 st dec’d, 27 (30, 33, 36, 39, 42, 45) sts rem. Work a Dec Row every RS row 9 (9, 9, 8, 8, 8, 6) more times, then work a Dec Row every 4 rows 2 (2, 2, 3, 3, 3, 5) times – 11 sts dec’d; 16 (19, 22, 25, 28, 31, 34) sts rem. Work even in patt, if necessary until piece meas 21 (21½, 22½, 23, 24, 24½, 25½)“ from cast-on edge, ending with WS row. Place rem sts on holder.

### Left Front

**Row 1 (WS):** Cont as est’d to end.

**Dec Row (RS):** Cont as est’d to last 3 sts, p2tog, k1 – 1 st dec’d, 27 (30, 33, 36, 39, 42, 45) sts rem. Work a Dec Row every RS row 9 (9, 9, 8, 8, 8, 6) more times, then work a Dec Row every 4 rows 2 (2, 2, 3, 3, 3, 5) times – 11 sts dec’d; 16 (19, 22, 25, 28, 31, 34) sts rem. Work even in patt, if necessary until piece meas 21 (21 ½, 22 ½, 23, 24, 24 ½, 25 ½)“, ending with WS row. Place rem sts on holder.

### Back

#### Hem

With smaller straight ndls, cast on 58 (64, 70, 76, 82, 88, 94) sts.

**Row 1 (RS):** K1, work in K1, P2 Twisted Rib to last st, k1.

**Row 2 (WS):** P1, work in K1, P2 Twisted Rib to last st, p1.

Rep Rows 1-2 for 2“, ending with a WS row. Change to larger ndl.

#### Back Body

**Row 1 (RS):** K1, purl to last st, k1.

**Row 2 (WS):** P1, knit to last st, p1.

Rep Rows 1-2 until piece meas 7½ (7½, 8, 8, 8½, 8½, 9)“ from cast-on edge. Place removable markers on each side to mark beg of armhole.

Cont in patt as est’d until piece meas 21 (21½, 22½, 23, 24, 24½, 25½)“ from cast-on edge, ending with a WS row. Place 2 removable markers on both sides of center 26 Neck sts.

### Right Sleeve

*Note: During Sleeve decreases, continue in pattern as established.*

Join Shoulders using the 3-needle bind-off.

With RS facing and larger ndl, pick up and knit 68 (70, 74, 76, 78, 80, 84) sts bet removable markers.

**Setup Row (WS):** P1, k13 (14, 16, 17, 18, 19, 21), pm, work Sleeve Staircase Panel over 19 sts, pm, k34 (35, 37, 38, 39, 40, 42), p1.

**Row 1 (RS):** K1, purl to m, sl m, work Sleeve Staircase Panel to m, sl m, purl to last st, k1.

**Row 2:** P1, knit to m, sl m, work Sleeve Staircase Panel to m, sl m, knit to last st, p1.

*Extra Small, Small, Large, 1X, 2X, & 3X Only*

**Dec Row (RS):** K1, ssp, cont in patt as est’d to last 3 sts, p2tog, k1 – 2 sts dec’d, 66 (68, -, 74, 76, 78, 82) sts rem.

*All Sizes*

Cont even as est’d, working a Dec Row every 4 rows 2 (1, -, -, 1, -, -) more times, then work a Dec row every RS row 20 (22, 26, 24, 23, 26, 28) times – 44 (46, 50, 46, 48, 50, 54) sts dec’d, 22 (22, 22, 28, 28, 28) sts rem.

Cont even as est’d until Sleeve meas 12¼ (12¼, 12½, 12½, 12¾, 12¾, 13)“ from pick-up edge.

*Knit. Relax. Smile. Repeat!*

2018 © Universal Yarn, Inc.

All rights reserved.

www.universalyarn.com

This pattern may not be reproduced for business, trade or sale.

Switch to smaller ndls.

### Cuff

**Row 1 (RS):** K1, work in K1, P2 Twisted Rib to last st, k1.

**Row 2 (WS):** P1, work in K1, P2 Twisted Rib to last st, p1.

Rep Rows 1-2 until Sleeve meas 14¼ (14¼, 14½, 14½, 14¾, 14¾, 15)'' from pick-up edge. Bind off all sts.

### Left Sleeve

*Note: During Sleeve decreases, continue in pattern as established.*

Join Shoulders using the 3-needle bind-off.

With RS facing and larger ndl, pick up and knit 68 (70, 74, 76, 78, 80, 84) sts bet removable markers.

**Setup Row (WS):** P1, k34 (35, 37, 38, 39, 40, 42), pm, work Sleeve Staircase Panel over 19 sts, pm, k13 (14, 16, 17, 18, 19, 21), p1.

**Row 1 (RS):** K1, purl to m, sl m, work Sleeve Staircase Panel to m, sl m, purl to last st, k1.

**Row 2:** P1, knit to m, sl m, work Sleeve Staircase Panel to m, sl m, knit to last st, p1.

*Extra Small, Small, Large, 1X, 2X, & 3X Only*

**Dec Row (RS):** K1, ssp, cont in patt as est'd to last 3 sts, p2tog, k1 – 2 sts dec'd, 66 (68, -, 74, 76, 78, 82) sts rem.

*All Sizes*

Cont even as est'd, working a Dec Row every 4 rows 2 (1, -, -, 1, -, -) more times, then work a Dec row every RS row 20 (22, 26, 24, 23, 26, 28) times – 44 (46, 50, 46, 48, 50, 54) sts dec'd, 22 (22, 22, 28, 28, 28, 28) sts rem.

Cont even as est'd until Sleeve meas 12¼ (12¼, 12½, 12½, 12¾, 12¾, 13)'' from pick-up edge.

Switch to smaller ndls.

### Cuff

**Row 1 (RS):** K1, work in K1, P2 Twisted Rib to last st, k1.

**Row 2 (WS):** P1, work in K1, P2 Twisted Rib to last st, p1.

Rep Rows 1-2 until Sleeve meas 14¼ (14¼, 14½, 14½, 14¾, 14¾, 15)'' from pick-up edge. Bind off all sts.

### FINISHING

Seam Front, Back, and Sleeve sides tog. Block to finished measurements.

### Neck Edging

*Note: Removeable markers denote the center neck stitch. When dec'ing, remove markers to dec and return them to each side of center neck st.*

With smaller ndl and RS facing, beg at Right shoulder, knit across s26 (26, 26, 24, 24, 24, 26) sts along Back Neck, k2tog - (-, -, 1, 1, 1, -) time, pick up and knit 17 (17, 17, 18, 18, 18, 20) sts along Left Front Neck edge, 2 sts along Front bind-off, and 16 (16, 16, 19, 19, 19, 19) sts along Right Front Neck edge – 61 (61, 61, 64, 64, 64, 67) sts. Join to work in the rnd.

**Rnd 1:** P1, pm for BOR, [work in K1, P2 Twisted Rib] 14 (14, 14, 14, 14, 14, 15) times, k2tog, place removable marker on this st (move m up each rnd to denote center st), [p2, k1tbl] to last 2 sts, p2 – 1 st dec'd, 60 (60, 60, 63, 63, 63, 66) sts rem.

**Rnd 2:** Cont as est'd over to 1 st bef m, sl 2-k1-  
pssso, cont as est'd to end – 2 sts dec'd, 58 (58, 58, 61, 61, 61, 64) sts rem.

**Rnd 3:** Cont as est'd to end.

**Rnd 4:** Cont as est'd to 1 st bef m, sl 2-k1-  
pssso, cont as est'd to end – 2 sts dec'd, 56 (56, 56, 59, 59, 59, 62) sts rem.

Bind off all sts kwise.

Weave in ends.

### Abbreviations

<b>approx</b>	approximately
<b>beg</b>	begin(ning)
<b>bet</b>	between
<b>circ</b>	circular
<b>cn</b>	cable needle
<b>cont</b>	continue
<b>dec('d)</b>	decrease(d)
<b>est'd</b>	established
<b>k</b>	knit
<b>kwise</b>	knitwise
<b>LC</b>	left cross
<b>LPC</b>	left purl cross
<b>meas</b>	measures
<b>ndl</b>	needle
<b>p</b>	purl
<b>p2tog</b>	purl 2 sts together (1 st dec'd)

*Knit. Relax. Smile. Repeat!*

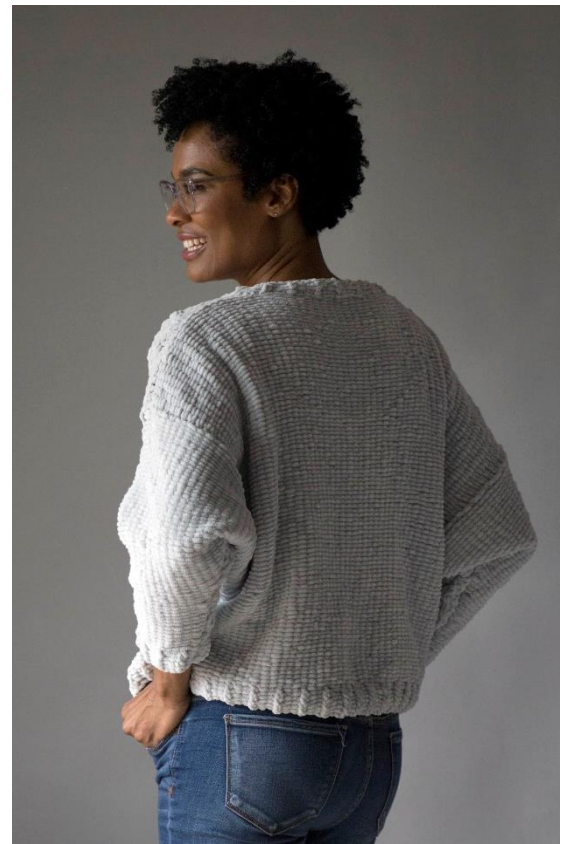
2018 © Universal Yarn, Inc.

All rights reserved.

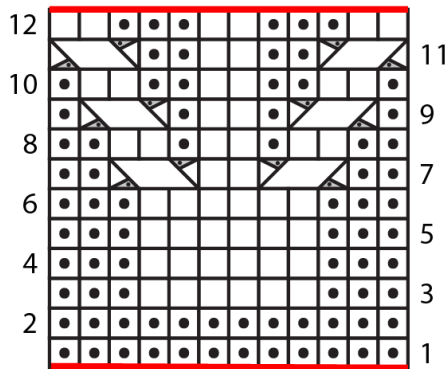
[www.universalyarn.com](http://www.universalyarn.com)

This pattern may not be reproduced for business, trade or sale.

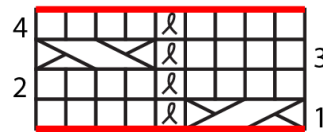
<b>patt</b>	pattern
<b>pm</b>	place marker
<b>pssso</b>	pass slipped stitch(es) over
<b>RC</b>	right cross
<b>rem</b>	remain(ing)
<b>rep</b>	repeat
<b>rev St</b>	reverse Stockinette stitch (purl on RS rows, knit on WS rows; in the rnd, purl every rnd)
<b>rnd</b>	round
<b>RPC</b>	right purl cross
<b>RS</b>	right side
<b>sl</b>	slip
<b>ssp</b>	slip next 2 sts individually knitwise, slip them back to left needle in this position, purl them together through the back loops (1 st dec'd)
<b>st(s)</b>	stitch(es)
<b>tbl</b>	through the back loop(s)
<b>WS</b>	wrong side



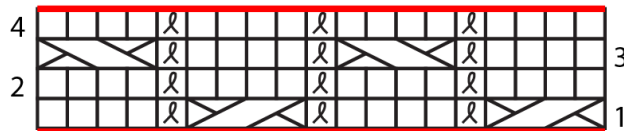
Center Panel










Front Staircase Cable



Sleeve Staircase Cable



### Key

-  purl on RS, knit on WS
-  purl on RS, knit on WS
-  knit tbl on RS, purl tbl on WS
-  2x1 LPC
-  2x1 RPC
-  2x2 RC
-  2x2 LC

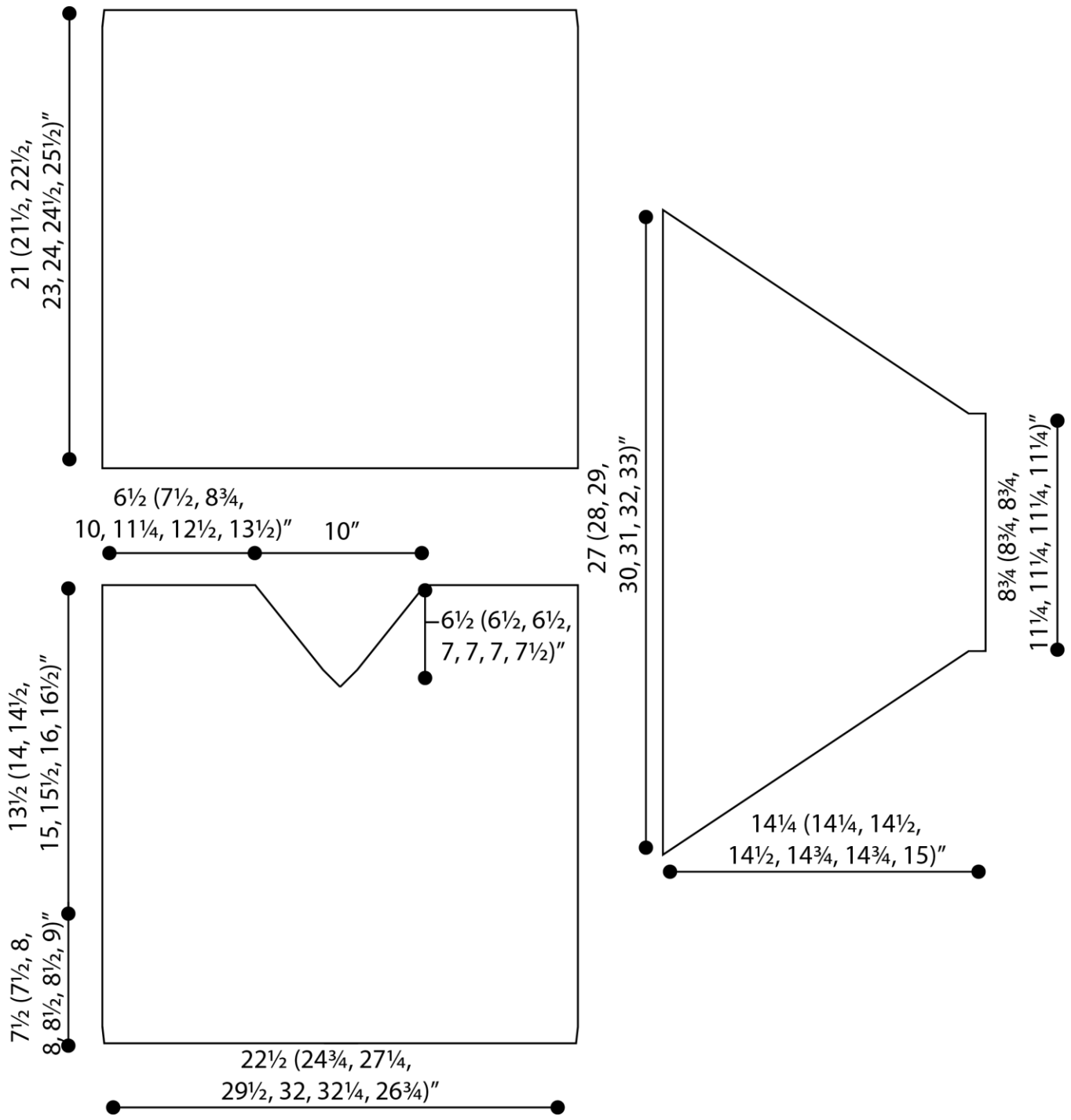
*Knit. Relax. Smile. Repeat!*

2018 © Universal Yarn, Inc.

All rights reserved.

[www.universalyarn.com](http://www.universalyarn.com)

This pattern may not be reproduced for business, trade or sale.



*Knit. Relax. Smile. Repeat!*

2018 © Universal Yarn, Inc.  
 All rights reserved.  
 www.universalyarn.com

This pattern may not be reproduced for business, trade or sale.