



Pattern Collection: Children



Little Hoodie

Designed by Universal Yarn Design Team

SIZES

3 mos (6 mos, 12 mos, 18 mos, 2 yrs, 4 yrs, 6 yrs, 8 yrs, 10 yrs)

FINISHED MEASUREMENTS

Chest Circumference (Buttoned): 15 $\frac{3}{4}$ " (16 $\frac{1}{4}$ ", 18 $\frac{1}{4}$ ", 19 $\frac{1}{4}$ ", 20 $\frac{1}{2}$ ", 22 $\frac{1}{2}$ ", 24 $\frac{1}{4}$ ", 26 $\frac{1}{4}$ ", 27 $\frac{1}{2}$ ")

Length: 11 (11 $\frac{3}{4}$ ", 12 $\frac{1}{2}$ ", 13 $\frac{1}{4}$ ", 14", 15 $\frac{1}{2}$ ", 16 $\frac{3}{4}$ ", 18", 19 $\frac{1}{2}$ ")

MATERIALS

Universal Yarn Bella Cash (60% fine merino superwash, 30% nylon, 10% cashmere; 50g/230 yds)

- 105 Ice (A) – 3 (3, 3, 4, 4, 4, 5, 5, 5) balls

Needles: US Size 3 (3.25 mm) straight *or size needed to obtain gauge*

US Size 2 (2.75 mm) straight

Notions: Tapestry needle, stitch holders or waste yarn, 5 (5, 6, 6, 6, 7, 7, 8, 8) – $\frac{3}{4}$ " buttons, stitch markers, removeable stitch markers

GAUGE

26 sts x 35 rows = 4" in stockinette stitch with larger ndl

Save time, check your gauge.

Knit. Relax. Smile. Repeat!

2018 © Universal Yarn, Inc.

All rights reserved.

www.universalyarn.com

This pattern may not be reproduced for business, trade or sale.

PATTERN NOTES

Lace panels make this adorable hooded cardigan perfect for multi-season wear. Worked in Bella Cash, this yarn is equal parts soft and luxurious as it is sturdy and durable. The lace panels and hood balance each other out – making this an incredibly versatile layering piece. We love the classic look of this cardigan, so we've sized it for babies through children of 10 years – and we hope you enjoy it as much as we do.

STITCH GUIDE

Waves Panel A

(panel of 18 sts)

Row 1 (RS): K2tog, yo, k4, k2tog, yo, k2, k2tog, yo, k4, k2tog, yo.

WS Rows 2-10: Purl.

Row 3: K2tog, yo, k3, k2tog, k1, yo, k2, k2tog, yo, k3, k2tog, k1, yo.

Row 5: K2tog, yo, k2, k2tog, k2, yo, k2, k2tog, yo, k2, k2tog, k2, yo.

Row 7: K2tog, yo, k1, k2tog, k3, yo, k2, k2tog, yo, k1, k2tog, k3, yo.

Row 9: K2tog, yo, k2tog, k4, yo, k2, k2tog, yo, k2tog, k4, yo.

Rep Rows 1-10 for patt.

Waves Panel B

(panel of 18 sts)

Row 1 (RS): Yo, ssk, k4, yo, ssk, k2, yo, ssk, k4, yo, ssk.

WS Rows 2-10: Purl.

Row 3: Yo, k1, ssk, k3, yo, ssk, k2, yo, k1, ssk, k3, yo, ssk.

Row 5: Yo, k2, ssk, k2, yo, ssk, k2, yo, k2, ssk, k2, yo, ssk.

Row 7: Yo, k3, ssk, k1, yo, ssk, k2, yo, k3, ssk, k1, yo, ssk.

Row 9: Yo, k4, ssk, yo, ssk, k2, yo, k4, ssk, yo, ssk.
Rep Rows 1-10 for patt.

K1, P1 Ribbing

(odd number of sts)

Row 1 (RS): * K1, p1; rep from * to last st, k1.

Row 2 (WS): * P1, k1; rep from * to last st, p1.

Rep Rows 1 & 2 for patt.

SWEATER

Back

Hem

With smaller ndl, cast on 53 (55, 61, 65, 69, 75, 81, 87, 91) sts. Work in K1, P1 Rib for 1½ (1½, 1¾, 1¾, 2, 2, 2¼, 2¼, 2½)”, ending with a RS row.

Change to larger ndl.

Back Body

Set-up Row (WS): P4 (6, 8, 8, 10, 12, 14, 16, 18), pm, p18, pm, p9 (7, 9, 13, 13, 15, 17, 19, 19), pm, p18, pm, p4 (6, 8, 8, 10, 12, 14, 16, 18).

Row 1 (RS): Knit to m, sl m, work Row 1 of Waves Panel A to m, sl m, knit to m, sl m, work Row 1 of Waves Panel B to m, sl m, knit to end.

Row 2: Purl to m, sl m, work next row of Waves Panel B to m, sl m, purl to m, sl m, work next row of Waves Panel A to m, sl m, purl to end.

Row 3: Knit to m, sl m, work next row of Waves Panel A to m, sl m, knit to m, sl m, work next row of Waves Panel B to m, sl m, knit to end.

Rep Rows 2-3 until piece meas 7¾ (8¼, 8¾, 9¼, 9½, 10½, 11½, 12½, 13½)” from cast-on edge, ending with a WS Row.

Place removeable markers on each side of Back to denote armholes.

Cont even in patt as est'd until piece meas 3¼ (3½, 3¾, 4, 4½, 5, 5¼, 5½, 6)” from armhole m, ending with a WS row.

Next Row (RS): K11 (11, 14, 15, 17, 19, 21, 23, 24) Right Shoulder sts, bind off 31 (33, 33, 35, 35, 37, 39, 41, 43) Back Neck sts, k11 (11, 14, 15, 17, 19, 21, 23, 24) Left Shoulder sts. Place Right and Left Shoulder sts on holder or waste yarn.

Left Front

Hem

With smaller ndl, cast on 23 (25, 27, 29, 31, 35, 39, 41, 43) sts. Work in K1, P1 Rib for 1½ (1½, 1¾, 1¾, 2, 2, 2¼, 2¼, 2½)”, ending with a RS row.

Change to larger ndl.

Left Front Body

Set-up Row (WS): P1 (1, 1, 3, 3, 5, 7, 7, 7), pm, p18, pm, p4 (6, 8, 8, 10, 12, 14, 16, 18).

Row 1 (RS): Knit to m, sl m, work Row 1 of Waves Panel A to m, sl m, knit to end.

Knit. Relax. Smile. Repeat!

2018 © Universal Yarn, Inc.

All rights reserved.

www.universalyarn.com

This pattern may not be reproduced for business, trade or sale.

Row 2: Purl to m, sl m, work next row of Waves Panel A to m, sl m, purl to end.

Row 3: Knit to m, sl m, work next row of Waves Panel A to m, sl m, knit to end.

Rep Rows 2-3 until piece meas 7¾ (8¼, 8¾, 9¼, 9½, 10½, 11½, 12½, 13½)'' from cast-on edge, ending with a WS Row.

Place removeable markers on each side of Left Front to denote armholes. Cont in patt as est'd until piece meas 2¼ (2¼, 2½, 2½, 3, 3¼, 3½, 3½, 4)'' from armhole m, ending with a RS row.

Shape Left Front Neck

Row 1 (WS): Bind off 5 (6, 6, 7, 7, 8, 8, 8) sts, cont even as est'd to end – 18 (19, 21, 22, 24, 28, 31, 33, 35) sts rem.

Row 2 (RS): Cont even as est'd to end.

Row 3: Bind off 4 (5, 4, 5, 5, 6, 6, 6, 7) sts, cont even as est'd to end – 14 (14, 17, 17, 19, 22, 25, 27, 28) sts rem.

Row 4: Cont even as est'd to end.

Row 5: Bind off 3 (3, 3, 2, 2, 3, 4, 4, 4) sts, cont even as est'd to end – 11 (11, 14, 15, 17, 19, 21, 23, 24) sts rem.

Cont even as est'd until piece meas 3¼ (3½, 3¾, 4, 4½, 5, 5¼, 5½, 6)'' from armhole m, ending with a WS row. Place Left Front sts on holder or waste yarn.

Right Front Hem

With smaller ndl, cast on 23 (25, 27, 29, 31, 35, 39, 41, 43) sts. Work in K1, P1 Rib for 1½ (1½, 1¾, 1¾, 2, 2, 2¼, 2¼, 2½)'' , ending with a RS row. Change to larger ndl.

Right Front Body

Set-up Row (WS): P4 (6, 8, 8, 10, 12, 14, 16, 18), pm, p18, pm, p1 (1, 1, 3, 3, 5, 7, 7, 7).

Row 1 (RS): Knit to m, sl m, work Row 1 of Waves Panel B to m, sl m, knit to end.

Row 2: Purl to m, sl m, work next row of Waves Panel B to m, sl m, purl to end.

Row 3: Knit to m, sl m, work next row of Waves Panel B to m, sl m, knit to end.

Rep Rows 2-3 until piece meas 7¾ (8¼, 8¾, 9¼, 9½, 10½, 11½, 12½, 13½)'' from cast-on edge, ending with a WS Row.

Place removeable markers on each side of Right Front to denote armholes. Cont in patt as est'd until piece meas 2¼ (2¼, 2½, 2½, 3, 3¼, 3½, 3¾, 4)'' from armhole m, ending with a WS row.

Shape Right Front Neck

Row 1 (RS): Bind off 5 (6, 6, 7, 7, 7, 8, 8, 8) sts, cont even as est'd to end – 18 (19, 21, 22, 24, 28, 31, 33, 35) sts rem.

Row 2 (WS): Cont even as est'd to end.

Row 3: Bind off 4 (5, 4, 5, 5, 6, 6, 6, 7) sts, cont even as est'd to end – 14 (14, 17, 17, 19, 22, 25, 27, 28) sts rem.

Row 4: Cont even as est'd to end.

Row 5: Bind off 3 (3, 3, 2, 2, 3, 4, 4, 4) sts, cont even as est'd to end – 11 (11, 14, 15, 17, 19, 21, 23, 24) sts rem.

Cont even as est'd until piece meas 3¼ (3½, 3¾, 4, 4½, 5, 5¼, 5½, 6)'' from armhole m, ending with a WS row. Place Left Front sts on holder or waste yarn.

SLEEVES

Cuff

With smaller ndl, cast on 25 (27, 29, 31, 33, 35, 37, 39, 41) sts. Work in K1, P1 Rib for 1½ (1½, 1¾, 1¾, 2, 2, 2¼, 2¼, 2½)'' , ending with a WS row. Change to larger ndl.

Main Sleeve

Row 1 (RS): Knit.

Row 2 (WS): Purl.

Inc Row: K1, m1R, cont even in St st to last st, m1L, k1 – 2 sts inc'd, 27 (29, 31, 33, 35, 37, 39, 41, 43) sts.

Work an Inc Row every 2 (2, 2, 2, 2, 4, 4, 4, 4) rows 8 (5, 3, 3, 5, 12, 14, 18, 14) more time(s), then work an Inc Row every - (4, 4, 4, 4, 6, 6, -, 6) rows - (4, 6, 7, 7, 1, 1, -, 4) times – 16 (18, 18, 20, 24, 26, 30, 36, 36) sts inc'd, 43 (47, 49, 53, 59, 63, 69, 77, 79) sts.

Cont even in St st until piece meas 6 (7, 7½, 8, 8½, 10½, 11½, 12½, 13½)'' from cast-on edge, ending with a WS row. Bind off all sts.

Hood

Side 1

With larger ndl, cast on 29 (31, 31, 33, 33, 35, 37, 39, 41) sts.

Knit. Relax. Smile. Repeat!

2018 © Universal Yarn, Inc.

All rights reserved.

www.universalyarn.com

This pattern may not be reproduced for business, trade or sale.

Row 1 (RS): Knit.

Row 2 (WS): Purl.

Inc Row: K1, m1R, knit to last st, m1L, k1 – 2 sts inc'd, 31 (33, 33, 35, 35, 37, 39, 41, 43) sts.

Note: work WS inc rows as: P1, m1p, purl to last st, m1p, p1.

Rep Inc Row every 1 (1, 2, 2, 2, 2, 2, 2) row(s), 5 (5, 13, 13, 13, 11, 11, 9, 11) times, then rep Inc Row every 2 (2, -, -, 4, 4, 4, 4), 8 (8, -, -, 2, 2, 4, 3) times – 26 (26, 26, 26, 26, 26, 26, 26, 30) sts inc'd – sts inc'd, 57 (59, 59, 61, 61, 63, 65, 67, 71) sts.

Cast on 2 sts at the end of the next 2 RS rows – 4 sts inc'd, 61 (63, 63, 65, 65, 67, 69, 71, 75) sts.

Cont even in St st until piece meas 4½ (4¾, 4¾, 5, 5, 5½, 6, 6½, 7)'' from cast-on edge. *Note:*

Measure from center of Hood.

Change to smaller ndl.

Work in K1, P1 Rib for 1'' – Hood meas 5½ (5¾, 5¾, 6, 6, 6½, 7, 7½, 8)''.

Loosely bind off all sts in patt.

Side 2

With larger ndl, cast on 29 (31, 31, 33, 33, 35, 37, 39, 41) sts.

Row 1 (RS): Knit.

Row 2 (WS): Purl.

Inc Row: K1, m1R, knit to last st, m1L, k1 – 2 sts inc'd, 31 (33, 33, 35, 35, 37, 39, 41, 43) sts.

Rep Inc Row every 1 (1, 2, 2, 2, 2, 2, 2) row(s), 5 (5, 13, 13, 13, 11, 11, 9, 11) times, then rep Inc Row every 2 (2, -, -, 4, 4, 4, 4), 8 (8, -, -, 2, 2, 4, 3) times – 26 (26, 26, 26, 26, 26, 26, 26, 30) sts inc'd – sts inc'd, 57 (59, 59, 61, 61, 63, 65, 67, 71) sts.

Cast on 2 sts at the end of the next 2 WS rows – 4 sts inc'd, 61 (63, 63, 65, 65, 67, 69, 71, 75) sts.

Cont even in St st until piece meas 4½ (4¾, 4¾, 5, 5, 5½, 6, 6½, 7)'' from cast-on edge. *Note:*

Measure from center of Hood.

Change to smaller ndl.

Work in K1, P1 Rib for 1'' – Hood meas 5½ (5¾, 5¾, 6, 6, 6½, 7, 7½, 8)''.

Loosely bind off all sts in patt.

FINISHING

Block pieces to finished measurements and weave in ends. Join shoulder seams with a 3-ndl

bind-off. Sew Sleeves to body, using removeable markers as a guide. Sew side and Sleeve seams. Sew Hood pieces tog. Sew unseamed side of assembled Hood to Body.

Button Band

Note: One Buttonhole Row 2, the double yarn-overs are worked with the preceding stitch and first stitch following the double yarn-overs. If the first stitch is a knit stitch: ssk. If the First stitch is a purl stitch: p2tog. If the second stitch following the double yarnover is a knit stitch: k2tog. If the second stitch following the yarnover is a purl stitch, p2tog.

With RS facing and smaller ndl, pick up and knit 65 (69, 73, 77, 83, 89, 97, 105, 121) sts along Right Front Edge. Work in K1, P1 Rib for 1''. Loosely bind off all sts in patt.

Buttonhole Band

With RS facing and smaller ndl, pick up and knit 65 (69, 73, 77, 83, 89, 97, 105, 121) sts along Left Front Edge.

Work in K1, P1 Rib for 3 rows, ending with a WS row.

Buttonhole Row 1 (RS): Work in K1, P1 Rib over 3 (4, 5, 5, 5, 6, 6, 6, 7) sts, {[yo] 2 times, [work in K1, P1 Rib over 13 (13, 11, 12, 13, 12, 13, 12, 14) sts]} 4 (4, 5, 5, 5, 6, 6, 7, 7) times, [yo] 2 times, work in K1, P1 Rib over 10 (13, 13, 12, 13, 11, 13, 15, 16) sts.

Buttonhole Row 2 (WS): Cont as est'd to 1 st bef the first double yo, [work next st and the first yo tog, then work the second yo and foll st tog, cont as est'd to 1 st bef next double yo] 5 (5, 6, 6, 6, 7, 7, 8, 8) times, cont as est'd to end. Weave in rem ends. Sew buttons to Buttonhole Band opposite buttonholes.

Abbreviations

bef	before
cont	continue
est'd	established
inc('d)	increase(d)
k	knit

Knit. Relax. Smile. Repeat!

2018 © Universal Yarn, Inc.

All rights reserved.

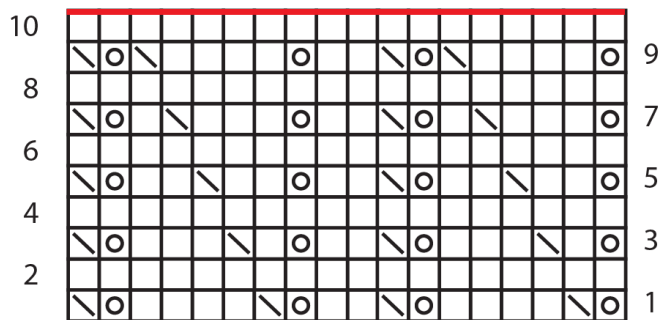
www.universalyarn.com

This pattern may not be reproduced for business, trade or sale.

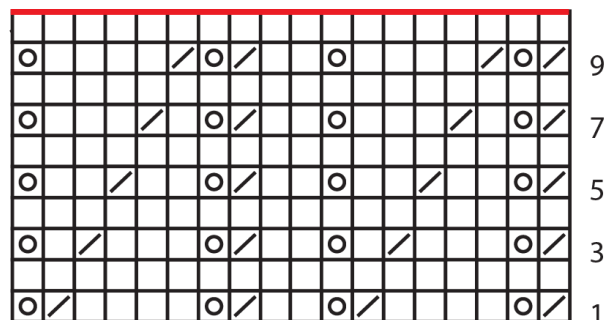
k2tog	knit 2 stitches together (1 st dec'd)
m	marker
m1L	insert left needle from front to back under horizontal strand of yarn lying between st just worked and next st, knit or purl this st through the back loop (1 st inc'd)
m1P	insert left needle from back to front under horizontal strand of yarn lying between st just worked and next st, purl this st through the front loop (1 st inc'd)
m1R	insert left needle from back to front under horizontal strand of yarn lying between st just worked and next st, knit or purl this st through the front loop (1 st inc'd)
meas	measures
ndl	needle
p	purl
p2tog	purl 2 sts together (1 st dec'd)
patt	pattern

pm	place marker
rem	remain(ing)
rep	repeat
RS	right side
sl	slip
ssk	slip next 2 sts individually knitwise, slip them back to left needle in this position, knit them together through the back loops (1 st dec'd)
St st	Stockinette stitch (knit on RS rows, purl on WS rows; in the rnd, knit every rnd)
st(s)	stitch(es)
WS	wrong side
yo	yarn over

Waves Panel B



Waves Panel A



Key

- knit on RS, purl on WS
- yo
- k2tog
- ssk

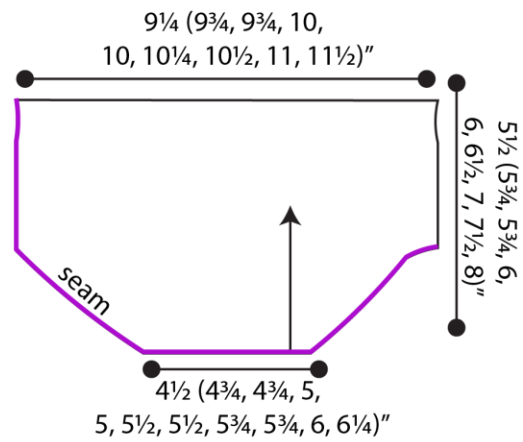
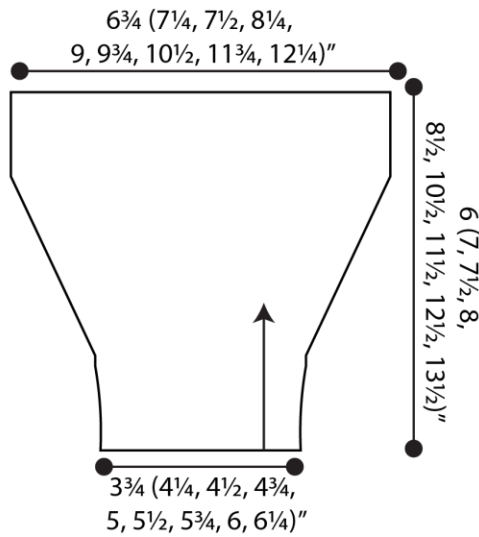
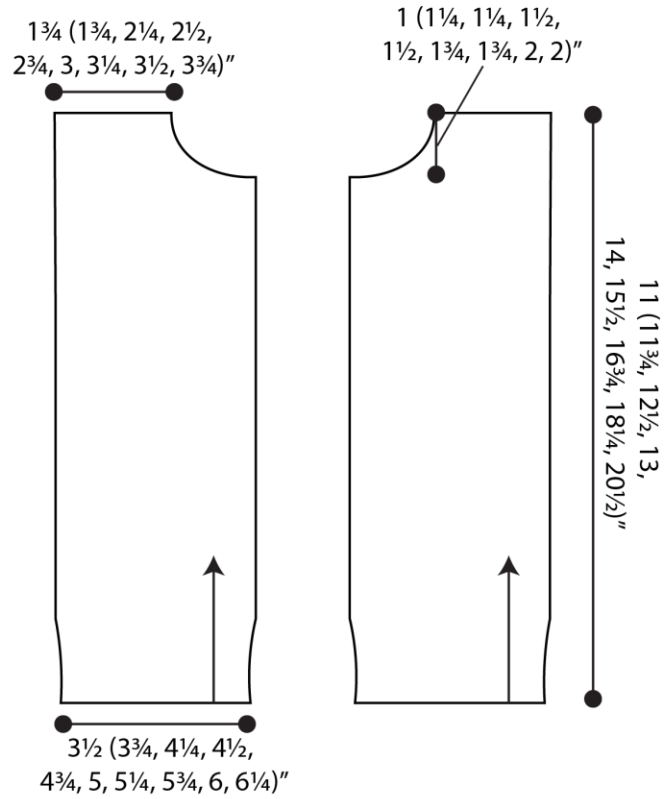
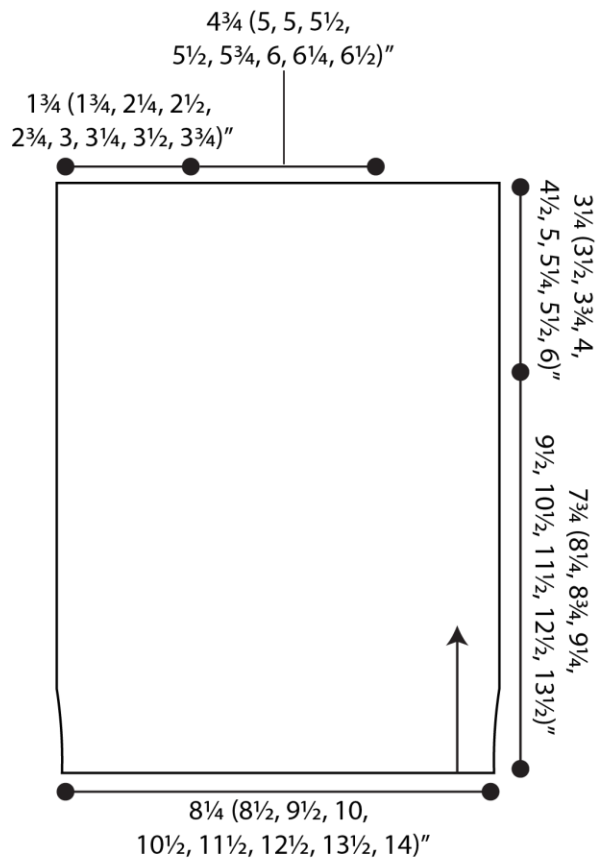
Knit. Relax. Smile. Repeat!

2018 © Universal Yarn, Inc.

All rights reserved.

www.universalyarn.com

This pattern may not be reproduced for business, trade or sale.



Knit. Relax. Smile. Repeat!

2018 © Universal Yarn, Inc.

All rights reserved.

www.universalyarn.com

This pattern may not be reproduced for business, trade or sale.