



## Pattern Collection: Accessories



### Little Big Shawl

Designed by Universal Yarn Design Team

### SIZES

One

### FINISHED MEASUREMENTS

Width along Top Edge: 40"

Depth in Center: 20"

### MATERIALS

Universal Yarn *Uptown Bulky Amplify*  
(100% anti-pilling acrylic; 225g/197 yds)

- 907 Speedy – 1 skein

**Needles:** US Size 13 (9 mm) 40" circular  
or size needed to obtain gauge

**Notions:** Tapestry needle

### GAUGE

8½ sts x 12 rows = 4" in K1, P2 ribbing.

**Save time, check your gauge.**

**Knit, Relax, Smile, Repeat!**

2017 © Universal Yarn, Inc.

All rights reserved.

[www.universalyarn.com](http://www.universalyarn.com)

This pattern may not be reproduced for business, trade or sale.

## PATTERN NOTES

This ribbed kerchief shawl is knit from the top down. Amplify's bold colors make this a funky and modern piece. Slipped knit stitches accentuate the color transitions.

Slip all stitches purlwise with yarn held to the wrong side of the work.

## I-Cord Bind Off

Cast on 2 sts to first st on left ndl using knitted cast-on. \* K1, k2tog tbl (1 st bound off), slip these 2 sts back to left ndl; rep from \* until all sts have been bound off. Bind off rem 2 I-Cord sts.

## SHAWL

### Starting Tab

Cast on 2 sts. Knit 8 rows in garter st.

**Next row (RS):** K2, rotate work 90 degrees clockwise, pick up and knit 4 sts from side of Tab, rotate work 90 degrees clockwise, pick up and knit 2 sts from cast-on edge – 8 sts.

**Next row (WS):** K2, pm, p1, pm, k2, pm, p1, pm, k2.

### Shawl Body

**Row 1 (RS):** [K2, sl m, yo, sl 1, yo, sl m] 2 times, k2 – 4 sts inc'd, 12 sts.

**Row 2 (WS):** [K2, sl m, k1, p1, k1, sl m] 2 times, k2.

**Row 3:** [K2, sl m, yo, p1, sl 1, p1, yo, sl m] 2 times, k2 – 4 sts inc'd, 16 sts.

**Row 4:** [K2, sl m, k2, p1, k2, sl m] 2 times, k2.

**Row 5:** [K2, sl m, yo, p2, sl 1, p2, yo, sl m] 2 times, k2 – 4 sts inc'd, 20 sts.

**Row 6:** {K2, sl m, [p1, k2] 2 times, p1, sl m} 2 times, k2.

**Row 7:** {K2, yo, sl 1, [p2, sl 1] to m, yo, sl m} 2 times, k2 – 4 sts inc'd, 24 sts.

**Row 8:** {K2, sl m, k1, [p1, k2] to 2 sts bef m, p1, k1, sl m} 2 times, k2.

**Row 9:** {K2, yo, p1, sl 1, [p2, sl 1] to 1 st bef m, p1, yo, sl m} 2 times, k2 – 4 sts inc'd, 28 sts.

**Row 10:** {K2, sl m, k2, [p1, k2] to m, sl m} 2 times, k2.

**Row 11:** {K2, yo, [p2, sl 1] to 2 sts bef m p2, yo, sl m} 2 times, k2 – 4 sts inc'd, 32 sts.

**Row 12:** {K2, sl m, [p1, k2] to 1 st bef m, p1, sl m} 2 times, k2.

Rep Rows 7-12, 7 more times – 84 sts inc'd, 116 sts. Bind off all sts using I-Cord Bind-Off.

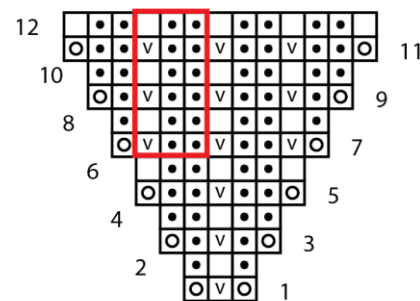
## FINISHING

Weave in ends and block.

## Abbreviations

<b>bef</b>	before
<b>inc('d)</b>	increase(d)
<b>k</b>	knit
<b>m</b>	marker
<b>ndl</b>	needle
<b>patt</b>	pattern
<b>p</b>	purl
<b>pm</b>	place marker
<b>rem</b>	remain(ing)
<b>rep</b>	repeat
<b>RS</b>	right side
<b>sl</b>	slip
<b>st(s)</b>	stitch(es)
<b>tbl</b>	through the back loop(s)
<b>WS</b>	wrong side
<b>yo</b>	yarn over

### Shawl Body



### Key

- knit on RS, purl on WS
- purl on RS, knit on WS
- slip 1 purlwise with yarn in back
- yo
- patt rep

## Knit, Relax, Smile, Repeat!

2017 © Universal Yarn, Inc.  
All rights reserved.  
www.universalyarn.com

This pattern may not be reproduced for business, trade or sale.