



PATTERN COLLECTION

Children



Leaf Lace Dress

Designed by Rachel Brockman

DIFFICULTY

Easy

SIZES

Newborn (3-6, 6-12, 18-24) months
Shown in 6-12 months size.

FINISHED MEASUREMENTS

Chest: 17 $\frac{1}{4}$ (19 $\frac{3}{4}$, 21 $\frac{1}{4}$, 23 $\frac{3}{4}$)"
Length: 12 (13 $\frac{1}{4}$, 15 $\frac{1}{4}$, 17 $\frac{1}{2}$)"

MATERIALS

[Universal Yarn Magnolia](#) (95% modal, 5% cashmere; 100g/361 yds)

- 114 Citrus Leaf - 1 (1, 1, 2) skein(s)
See Pattern Notes.

Needles: US Size 3 (3.25 mm) 16" circular
or size needed to obtain gauge
US Size 4 (3.5 mm) 16" circular and
straight (or your preferred needle for
knitting flat)

Notions: Tapestry needle, stitch markers,
removable stitch markers, stitch holder
or waste yarn

GAUGE

25 sts x 28 rows = 4" in Leaf Lace patt
using smaller ndl

24 sts x 32 rows = 4" in Stockinette
stitch (St st) using larger ndl

Save time, check your gauge.

Knit, Relax, Smile, Repeat!

2022 © Universal Yarn, Inc.

www.universalyarn.com

All rights reserved. This pattern may not be reproduced for business, trade or sale.

Questions? Contact patterns@universalyarn.com

PATTERN NOTES

This botanically inspired dress is perfect for spring and summer, and your little one will look cute as a blossom while wearing it! Knit in modal/cashmere blend, Magnolia, this piece is sleek and soft with a dreamy drape. The skirt features an all-over lace motif framed by garter ridges and is balanced out by a bodice of stockinette stitch.

The body of this dress is knit in the round from the bottom up. After the skirt portion is finished, stitches are decreased for the bodice and continued in the round to the underarms. Stitches for the underarm are bound off and raglan shaping commences. The sleeves are knit flat from the bottom up and sewn to the body. A rolled stockinette edging around the neck and sleeves create minimal finishing.

Size 6-12 Months takes almost exactly one full skein of Magnolia. You may wish to purchase an extra skein as insurance for this size.

STITCH GUIDE

Leaf Lace

(multiple of 16 sts)

Rnd 1: * Yo, p3, ssk, k5, k2tog, p3, yo, k1; rep from * to end.

Rnd 2: K1, p3, k7, p3, k2; rep from * to end.

Rnd 3: * Yo, k1, p3, ssk, k3, k2tog, p3, k1, yo, k1; rep from * to end.

Rnd 4: * K2, p3, k5, p3, k3; rep from * to end.

Rnd 5: * Yo, k2, p3, ssk, k1, k2tog, p3, k2, yo, k1; rep from * to end.

Rnd 6: * [K3, p3] 2 times, k4; rep from * to end.

Rnd 7: * Yo, k3, p3, S2KP2, p3, k3, yo, k1; rep from * to end.

Rnd 8: * K4, p3, k1, p3, k5; rep from * to end.

Rnd 9: * K2, k2tog, p3, yo, k1, yo, p3, ssk, k3; rep from * to end.

Rnd 10: Rep Rnd 6.

Rnd 11: * K1, k2tog, p3, [k1, yo] 2 times, k1, p3, ssk, k2; rep from * to end.

Rnd 12: Rep Rnd 4.

Rnd 13: * Ktog, p3, k2, yo, k1, yo, k2, p3, ssk, k1; rep from * to end.

Rnd 14: Rep Rnd 2.

Rnd 15: * P3, k3, yo, k1, yo, k3, p3, S2KP2; rep from * to end.

Rnd 16: * P3, k9, p3, k1; rep from * to end.

Rep Rnds 1-16 for patt.



PATTERN BEGINS

BODY

Skirt

With smaller 16" circ ndl, cast on 176 (192, 208, 224) sts. PM and join to knit in the rnd, being careful not to twist.

Rnd 1: Knit.

Rnd 2: Purl.

Rnds 3-4: Rep Rnds 1-2.

Next Rnd: Work Rnd 1 of Leaf Lace patt to end. Patt will be repeated 11 (12, 13, 14) times across each rnd.

Cont as est'd through Rnd 16 of Leaf Lace patt, then rep Rnds 1-16 of patt 2 (2, 3, 3) more times, then rep Rnds 1-8 of patt 0 (1, 0, 1) more time(s).

Note: Newborn and 6-12 Months sizes end after completing Rnd 16 of Leaf Lace patt. Sizes 3-6 Months and 18-24 Months end after completing Rnd 8 of Leaf Lace patt.

Bodice

Change to larger 16" circ ndl.

Next Rnd (Dec Rnd): [K2tog, k1] 18 (22, 26, 30) times, [k2tog] 33 (29, 25, 21) times, [k2tog, k1] 18 (22, 26, 30) times, k2tog – 70 (74, 78, 82) sts dec'd, 106 (118, 130, 142) sts rem.

Rnd 1: Purl.

Knit, Relax, Smile, Repeat!

2022 © Universal Yarn, Inc.

www.universalyarn.com

All rights reserved. This pattern may not be reproduced for business, trade or sale.

Questions? Contact patterns@universalyarn.com

Rnd 2: Knit.

Rnd 3: Purl. *Note: Place a removable marker into the fabric on this rnd.*

Work even in St st (knit every rnd) until piece meas approx. 1 (1, 1¼, 1¾)" from Rnd 3 of Bodice (*Note: You previously placed a removable marker on this round as a reference for measuring.*)

After you reach this measurement, you may remove this marker from the fabric.)

Separate Front & Back

Next Rnd: Knit, ending 2 (3, 4, 5) sts bef bor m.

Next Rnd: Bind off next 4 (6, 8, 10) underarm sts (removing bor m as you come to it), k49 (53, 57, 61) Front sts, bind off next 4 (6, 8, 10) underarm sts, k49 (53, 57, 61) Back sts, turn. Place Front sts on holder or waste yarn.

Back Raglan Shaping

Purl a WS row.

Row 1 (RS Dec Row): K1, k2tog, knit to last 3 sts, ssk, k1 – 2 sts dec'd, 47 (51, 55, 59) sts rem.

Row 2 (WS): Purl.

Row 3: Knit.

Row 4: Purl.

Rep Rows 1-4, 2 (2, 3, 5) more times, then rep Rows 1-2, 8 (9, 9, 8) times – 20 (22, 24, 26) sts dec'd, 27 (29, 31, 33) sts rem. Bind off all sts kwise.

Return Front sts to ndl, ready to work a WS row.

Front Raglan Shaping

Complete as for Back Raglan Shaping.

SLEEVES

(make two alike)

With larger straight ndl, cast on 40 (46, 50, 56) sts.

Row 1 (WS): Purl.

Row 2 (RS): Knit.

Cont in St st until Sleeve meas approx. ½ (½, ½, ¾)" from cast-on edge, ending with a WS row.

Raglan Shaping

Bind off 2 (3, 4, 5) sts at the beg of the next 2 rows – 36 (40, 42, 46) sts rem.

Row 1 (RS Dec Row): K1, k2tog, knit to last 3 sts, ssk, k1 – 2 sts dec'd, 34 (38, 40, 44) sts rem.

Row 2 (WS): Purl.

Row 3: Knit.

Row 4: Purl.

Rep Rows 1-4, 0 (0, 2, 4) more times, then rep Rows 1-2, 12 (13, 11, 10) times – 24 (26, 26, 28) sts dec'd, 10 (12, 14, 16) sts rem. Bind off all sts kwise.

FINISHING

Gently wash and block pieces to finished measurements. Sew Raglan seams. Sew Sleeve seams. Weave in ends.

Abbreviations

approx	approximately
bef	before
beg	begin(ning)
bor	beginning of round
circ	circular
cont	continue
dec('d)	decrease(d)
est'd	established
k	knit
k2tog	knit 2 stitches together (1 st dec'd)
kwise	knitwise
m	marker
meas	measures
ndl	needle
p	purl
patt	pattern
pm	place marker
rem	remain(ing)
rep	repeat
rnd	round
RS	right side
S2KP2	slip 2 stitches as if to knit 2 together, knit 1, pass 2 slipped stitches over knit stitch; centered double decreases
ssk	slip next 2 sts individually knitwise, slip them back to left needle in this position, knit them together through the back loops (1 st dec'd)
St st	Stockinette stitch (knit on RS rows, purl on WS rows; in the rnd, knit every rnd)
st(s)	stitch(es)
WS	wrong side
yo	yarn over

Knit, Relax, Smile, Repeat!

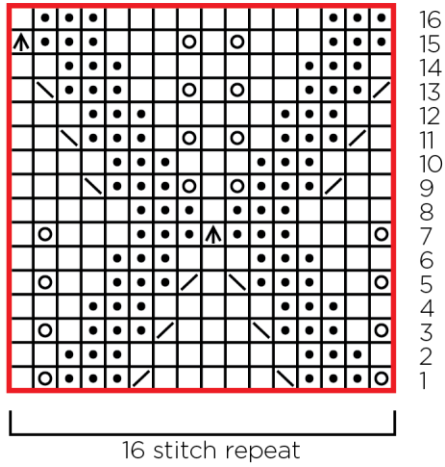
2022 © Universal Yarn, Inc.

www.universalyarn.com

All rights reserved. This pattern may not be reproduced for business, trade or sale.

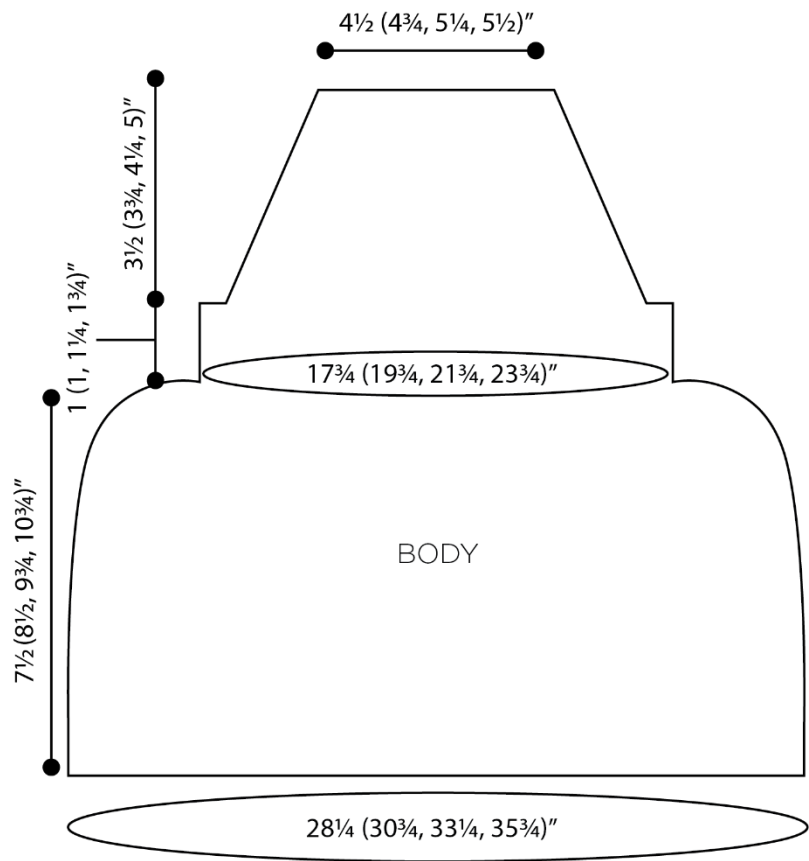
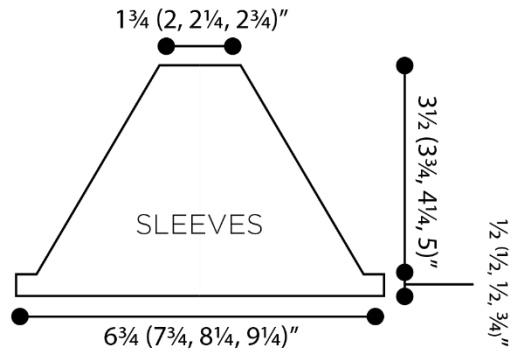
Questions? Contact patterns@universalyarn.com

Leaf Lace



Key

- pattern repeat
- knit
- purl
- yo
- ssk
- k2tog
- S2KP2



Knit, Relax, Smile, Repeat!

2022 © Universal Yarn, Inc.

www.universalyarn.com

All rights reserved. This pattern may not be reproduced for business, trade or sale.

Questions? Contact patterns@universalyarn.com