

PATTERN COLLECTION: *WOMEN*



Leaf Lace Cardigan

Designed by Universal Yarn
Design Team

SIZES

Extra Small/Small
(Medium/Large, 1X/2X)
Shown in Extra Small/Small
size.

FINISHED MEASUREMENTS

Bust: 33½ (40½, 48)''
Length: 21 (22½, 24)''

MATERIALS

Nazli Gelin Garden 10 (100%
Mercerized Egyptian Giza
Cotton; 50g/308 yds)

- #700-22 – 3 (3, 4) balls

Needles: US Size 5 (3.75
mm) straight, 32'' circular (or
longer) *or size needed to
obtain gauge*

Notions: Removable stitch
markers, tapestry needle

GAUGE

22 sts x 29 rows = 4'' in Leaf
Lace patt

**Save time, check your
gauge.**

Knit. Relax. Smile. Repeat!

2013 © Universal Yarn, Inc.
All rights reserved.
www.universalyarn.com

This pattern may not be reproduced for business, trade or sale.

STITCH GUIDE

Leaf Lace

(multiple of 10 sts + 2)

Row 1 (RS): K1, * [yo, ssk, k2tog, yo, k1] 2 times; rep from * to last st, k1.

WS Rows 2-14: Purl.

Row 3: K1, * K1, yo, ssk, k3, k2tog, yo, k2; rep from * to last st, k1.

Row 5: K1, * k2, yo, ssk, k1, k2tog, yo, k3; rep from * to last st, k1.

Row 7: K1, * k3, yo, sl 1-k2tog-ssso, yo, k4; rep from * to last st, k1.

Rows 9, 11, 13: K1, * k2tog, k2, yo, k1, yo, k2, ssk, k1; rep from * to last st, k1.

Rep Rows 1-14 for patt.

BACK

With straight ndls, cast on 92 (112, 132) sts. Beg with Row 1, work in Leaf Lace patt until piece meas 13½ (14, 14½)". Patt will be repeated 9 (11, 13) times across each row. Place removable markers on either side of piece to indicate beg of Armholes. Cont in patt until piece meas 7½ (8½, 9½)" from markers, ending with a WS row. Bind off all sts.

LEFT FRONT

With straight ndls, cast on 32 (42, 52) sts. Beg with Row 1, work in Leaf Lace patt until piece meas 13½ (14, 14½)". Patt will be repeated 3 (4, 5) times across each row. Place removable markers on either side of piece to indicate beg of Armholes. Cont in patt until piece meas 7½ (8½, 9½)" from markers, ending with a WS row. Bind off all sts.

RIGHT FRONT

Work as for Left Front.

FINISHING

Block pieces. Sew shoulder seams.

Armhole Edging

With RS facing and straight ndls, pick up and knit 110 (124, 138) sts evenly along Armhole (from marker to marker).

Row 1 (WS): * K1, p1; rep from * to end. Rep Row 1, 11 more times. Bind off all sts in patt.

Front Edging

With RS facing and circ ndl, pick up and knit 329 (345, 357) sts evenly around front opening.

Row 1 (WS): P1, * k1, p1; rep from * to end.

Row 2 (RS): K1, * p1, k1; rep from * to end. Rep these 2 rows, 5 more times. Bind off all sts in patt.

Sew side seams. Weave in ends. Block Edgings.

Knit. Relax. Smile. Repeat!

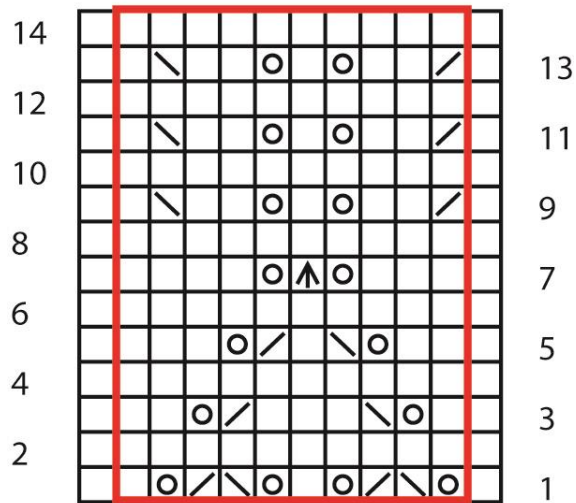
2013 © Universal Yarn, Inc.

All rights reserved.

www.universalyarn.com

This pattern may not be reproduced for business, trade or sale.

Leaf Lace



Key

- knit on RS, purl on WS
- yo
- ssk
- k2tog
- sl 1-k2tog-ssso
- pattern repeat

Knit, Relax, Smile, Repeat!

2013 © Universal Yarn, Inc.
All rights reserved.
www.universalyarn.com

This pattern may not be reproduced for business, trade or sale.