



## PATTERN COLLECTION

### Accessories



#### Lacy Kerchief

Designed by Afifa Sayeed

#### SKILL

Knitting

#### DIFFICULTY

Easy

#### SIZES

Small (Medium)

*Shown in size Medium.*

#### FINISHED MEASUREMENTS

Depth at Center: 7½ (15)"

Wingspan: 11 (22)" (excluding ties)

#### MATERIALS

Universal Yarn *Uptown Bamboo DK*  
(80% anti-pilling acrylic, 20% bamboo;  
100g/284 yds)

- 513 Flamingo - 1 skein

**Needle:** US Size 6 (4 mm) straight  
needle or your preferred needle for  
knitting flat *or size needed to obtain  
gauge*

**Notions:** Tapestry needle, stitch markers

#### GAUGE

18 sts x 26 rows = 4" in Vertical Lace  
patt.

**Save time, check your gauge.**

Knit, Relax, Smile, Repeat!

2023 © Universal Yarn, Inc.

[www.universalyarn.com](http://www.universalyarn.com)

All rights reserved. This pattern may not be reproduced for business, trade or sale.

Questions? Contact [patterns@universalyarn.com](mailto:patterns@universalyarn.com)

## PATTERN NOTES

Perfect for summer road trips or festival days, the Lacy Kerchief uses just one skein of Uptown Bamboo DK, a smooth blend of anti-pilling acrylic and bamboo with a subtle sheen. Use it to keep wayward hair out of your eyes or to add a little pop of color to any outfit.

This kerchief is knit from the bottom up with stitches cast on for the ties after you reach your desired size.

## STITCH GUIDE

### Vertical Lace

(multiple of 4 sts plus 2)

**Row 1 (RS):** K1, \* k1, yo, sssk, yo; rep from \* to last st, k1.

**Row 2 (WS):** K1, purl to last st, k1.

Rep Rows 1-2 for patt.

## PATTERN BEGINS

### Kerchief

*Note: This section is also charted for your convenience.*

Cast on 3 sts.

**Row 1 (RS):** K1, pm, yo, k1, yo, pm, k1 - 2 sts inc'd, 5 sts.

**WS Rows 2-12:** K1, sl m, purl to m, sl m, k1.

**Row 3:** K1, sl m, yo, k3, yo, sl m, k1 - 2 sts inc'd, 7 sts.

**Row 5:** K1, sl m, yo, work Row 1 of Vertical Lace to 1 st bef m, k1, yo, sl m, k1 - 2 sts inc'd, 9 sts.

**Row 7:** K1, sl m, yo, k1, work Row 1 of Vertical Lace to 2 sts bef m, k2, yo, sl m, k1 - 2 sts inc'd, 11 sts.

**Row 9:** K1, sl m, yo, k2tog, yo, work Row 1 of Vertical Lace to 3 sts bef m, k1, yo, ssk, yo, sl m, k1 - 2 sts inc'd, 13 sts.

**Row 11:** K1, sl m, yo, k1, k2tog, yo, k1, work Row 1 of Vertical Lace to 4 sts bef m, k1, yo, ssk, k1, yo, sl m, k1 - 2 sts inc'd, 15 sts.

Rep Rows 5-12, 5 (10) more times, then rep Rows 5-8, 1 more time - 44 (84) sts inc'd, 59 (99) sts.

### Ties

With RS facing, using cable method, cast on 60 (70) sts, knit across sts just cast on and Kerchief sts. Turn work, with WS facing, using cable method, cast on 60 (70) sts, knit across sts just cast on to end of row - 120 (140) sts inc'd, 179 (239) sts.

Knit 2 rows.

Bind off all sts kwise.

## FINISHING

Gently wash and block to finished measurements. Weave in ends.



## Abbreviations

<b>bef</b>	before
<b>inc('d)</b>	increase(d)
<b>k</b>	knit
<b>k2tog</b>	knit 2 stitches together (1 st dec'd)
<b>kwise</b>	knitwise
<b>m</b>	marker
<b>patt</b>	pattern
<b>pm</b>	place marker
<b>rep</b>	repeat
<b>RS</b>	right side
<b>ssk</b>	slip next 2 sts individually knitwise, slip them back to left needle in this position, knit them together through the back loops (1 st dec'd)
<b>sssk</b>	slip next 3 sts individually knitwise, slip them back to left needle in this position, knit them together through the back loops (2 sts dec'd)
<b>sl</b>	slip
<b>st(s)</b>	stitch(es)
<b>WS</b>	wrong side
<b>yo</b>	yarn over

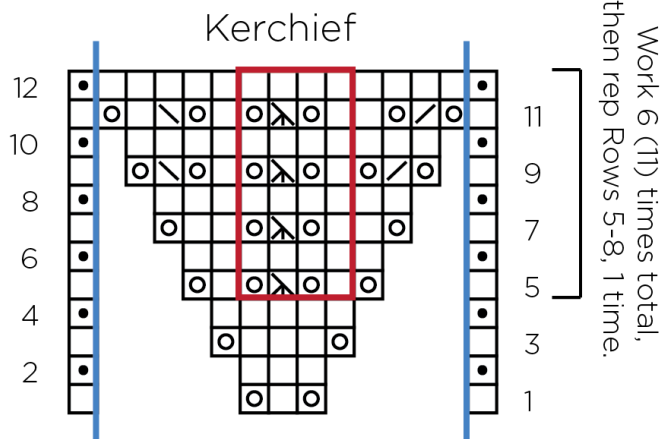
Knit, Relax, Smile, Repeat!

2023 © Universal Yarn, Inc.

[www.universalyarn.com](http://www.universalyarn.com)

All rights reserved. This pattern may not be reproduced for business, trade or sale.

Questions? Contact [patterns@universalyarn.com](mailto:patterns@universalyarn.com)



Key

- pattern repeat
- indicates marker
- knit on RS, purl on WS
- purl on RS, knit on WS
- o yo
- / ssk
- \ ssk
- / \ sssk
- / \ k2tog

Vertical Lace



Knit, Relax, Smile, Repeat!

2023 © Universal Yarn, Inc.

[www.universalyarn.com](http://www.universalyarn.com)

All rights reserved. This pattern may not be reproduced for business, trade or sale.

Questions? Contact [patterns@universalyarn.com](mailto:patterns@universalyarn.com)