



Pattern Collection: Accessory



Lace Dipped Scarf

Designed by Universal Yarn Design Team

SIZES

One Size

FINISHED MEASUREMENTS

Length: 70"

Width: 15"

MATERIALS

Fibra Natura Papyrus (78% cotton, 22% silk; 50g/131 yds)

- 229-05 Petal – 6 balls

Needles: US Size 6 (4 mm) straight or size needed to obtain gauge

Notions: Tapestry needle

GAUGE

21 sts x 28 rows = 4" in Stockinette stitch

Save time, check your gauge.

Knit, Relax, Smile, Repeat!

2018 © Universal Yarn, Inc.

All rights reserved.

www.universalyarn.com

This pattern may not be reproduced for business, trade or sale.

PATTERN NOTES

The Lace Dipped Scarf is named for the delicate lace adorning each end. The center of the scarf features soothing stockinette stitch with the added interest of a textural border.

This pattern is only charted. It is knit flat from the bottom-up.

SCARF

Bottom Edge

Cast on 79 sts. Work Rows 1-66 of Bottom Edge Chart.

Body

Row 1 (RS): K2, p2, k2, k1 tlb, p1, knit to last 8 sts, p1, k1tbl, k2, p2, k2.

Row 2 (WS): K2, p2, k2, p1 tbl, k1, purl to last 8 sts, k1, p1 tbl, k2, p2, k2.

Rep Rows 1-2 until piece meas approx 60" from cast-on edge.

Top Edge

Work Rows 1-66 of Top Edge Chart. Bind off all sts.

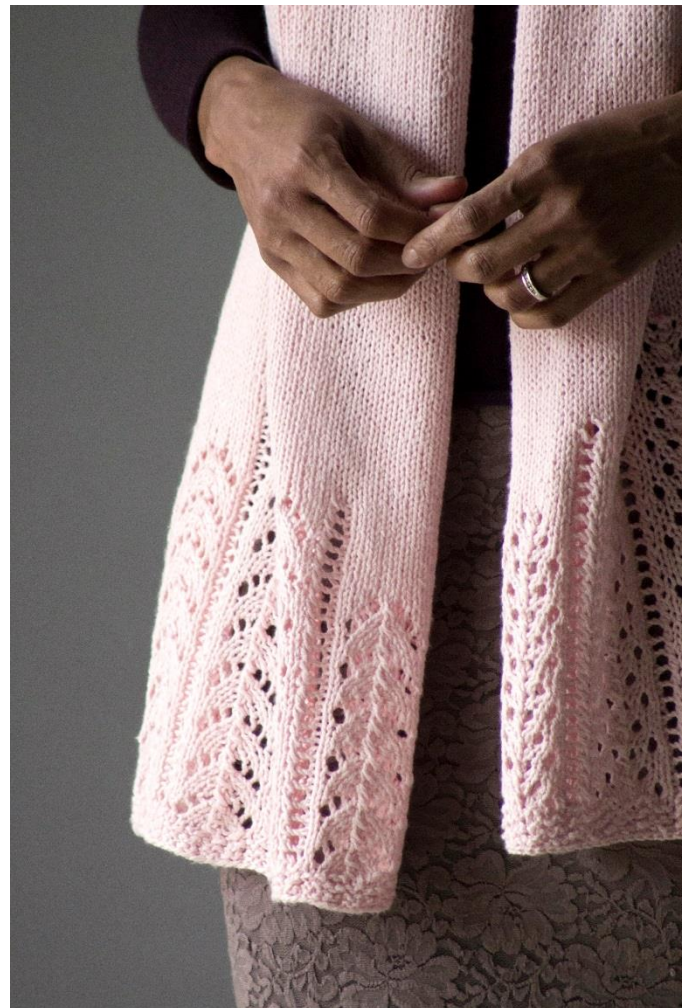
FINISHING

Block to finished measurements and weave in ends.

Abbreviations

approx	approximately
k	knit
k2tog	knit 2 stitches together (1 st dec'd)
meas	measures
ndl	needle
p	purl
patt	pattern
psso	pass slipped stitch(es) over
rep	repeat
RS	right side
sl	slip

ssk	slip next 2 sts individually knitwise, slip them back to left needle in this position, knit them together through the back loops (1 st dec'd)
St st	Stockinette stitch (knit on RS rows, purl on WS rows; in the rnd, knit every rnd)
tbl	through back loop
WS	wrong side
yo	yarn over



Knit, Relax, Smile, Repeat!

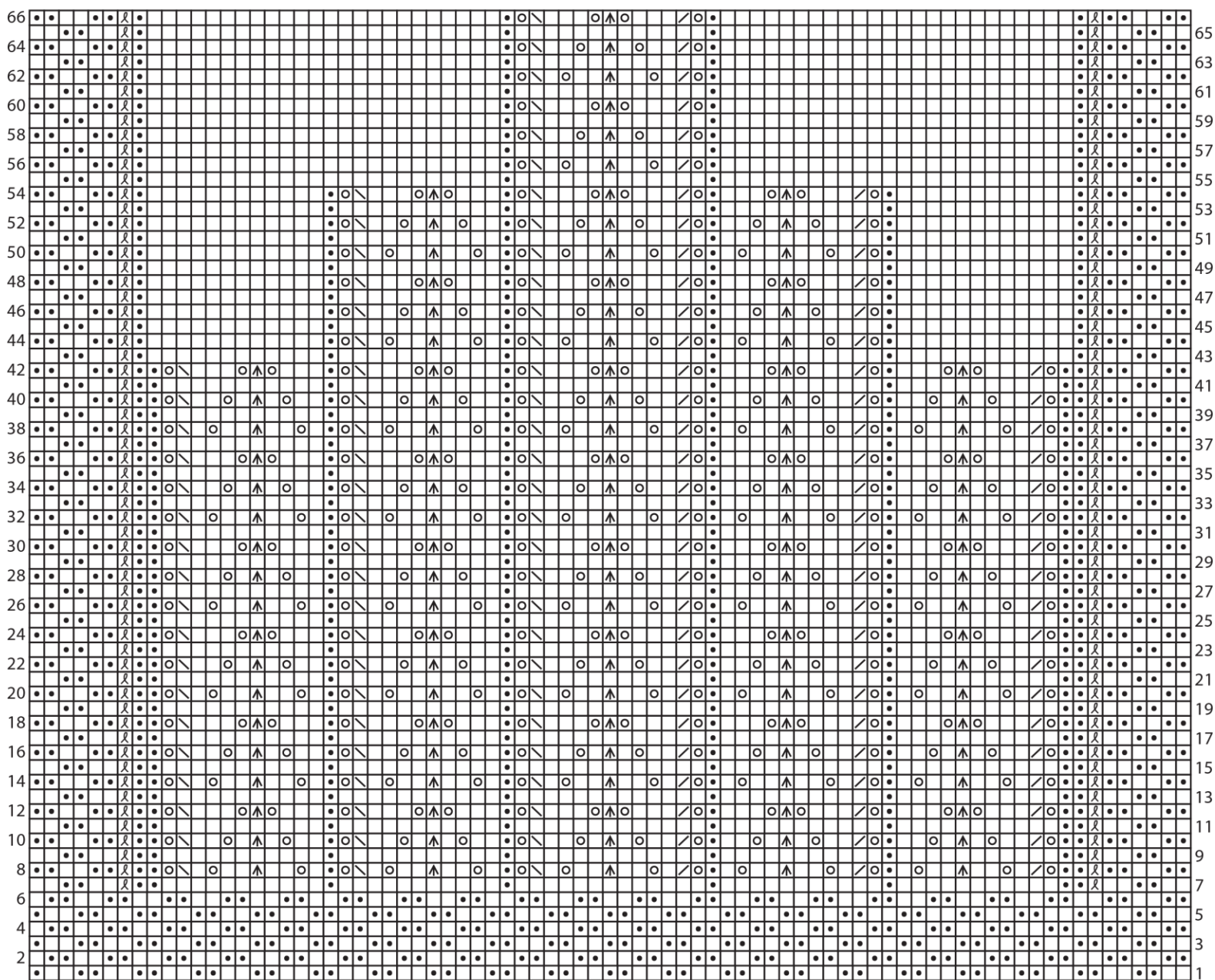
2018 © Universal Yarn, Inc.

All rights reserved.

www.universalyarn.com

This pattern may not be reproduced for business, trade or sale.

Bottom Edge Chart



Key

- knit tbl on RS, purl tbl on WS
- knit on RS, purl on WS
- purl on RS, knit on WS
- yo
- ssk
- k2tog
- sl 1-k2tog-pss0

Knit, Relax, Smile, Repeat!

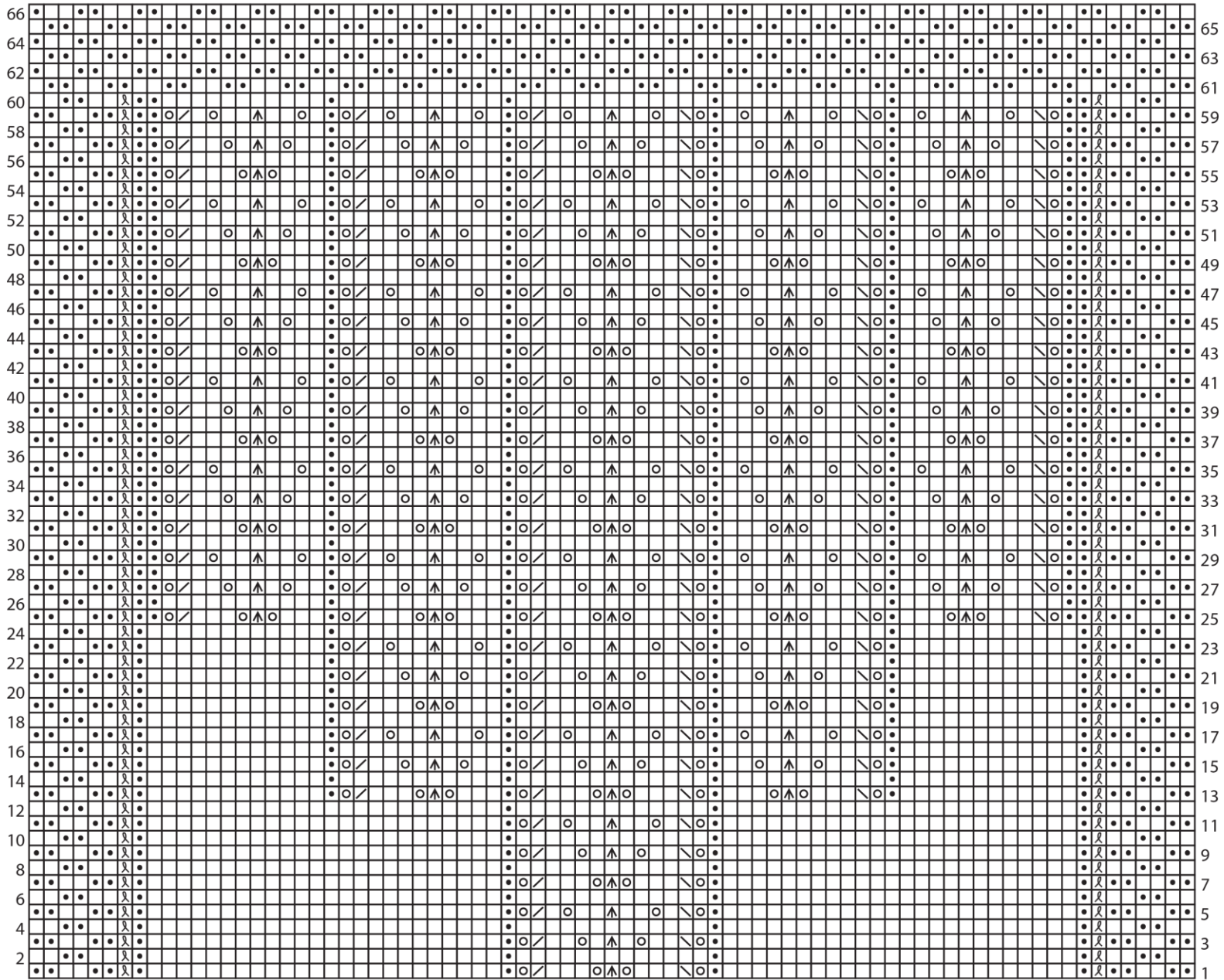
2018 © Universal Yarn, Inc.

All rights reserved.

www.universalyarn.com

This pattern may not be reproduced for business, trade or sale.

Top Edge Chart



Knit, Relax, Smile, Repeat!

2018 © Universal Yarn, Inc.

All rights reserved.

www.universalyarn.com

This pattern may not be reproduced for business, trade or sale.