



Pattern Collection: Men



Kenan's Hoodie

Designed by Yonca Ozbelli

SIZES

Men's Extra Small (Small, Medium, Large, 1X, 2X, 3X, 4X)

FINISHED MEASUREMENTS

Chest: 33½ (37, 40½, 44, 47, 50½, 54, 57½)"

Length: 24 (25, 25½, 26½, 27, 28, 28¼, 29)"

MATERIALS

Universal Yarn *Deluxe Worsted Tweed Superwash* (90% superwash wool, 7% acrylic, 3% viscose; 100 g/218 yds)

- 915 Cloud Blue – 7 (8, 9, 10, 11, 12, 12, 13) balls

Needles: US Size 8 (5 mm) straight or size needed to obtain gauge

Notions: Removable stitch markers, tapestry needle, waste yarn or stitch holder

GAUGE

19 sts x 28 rows = 4" in Broken K2, P2 Ribbing

Save time, check your gauge.

Knit. Relax. Smile. Repeat.

2017 © Universal Yarn, Inc.

All rights reserved.

www.universalyarn.com

This pattern may not be reproduced for business, trade or sale.

PATTERN NOTES

An easily memorized textured stitch pattern makes this sweater fun to knit. Kenan's sweater features a dropped shoulder and generously sized hood for a cozy, casual look. Though we've classified this design as a men's sweater, there is no reason it wouldn't be suitable for women, as well.

STITCH GUIDE

K1, P1 Ribbing

(even number of sts)

Row 1: *P1, k1, rep from * to end.

Rep Row 1 for patt.

Broken K2, P2 Ribbing

(multiple of 4 sts)

Row 1 (RS): Knit.

Row 2 (WS): P1, knit to last st, p1.

Row 3: K1, * p2, k2; rep from * to last 3 sts, p2, k1.

Row 4: P1, k2, * p2, k2; rep from * to last st, p1.
Rep Rows 1-4 for patt.

BACK

Cast on 80 (88, 96, 104, 112, 120, 128, 136) sts.

Hem

Work in K1, P1 Ribbing for 2".

Main Body

Beg with Row 1, work in Broken K2, P2 Ribbing until piece meas 16½ (17, 17, 17½, 17½, 18, 18, 18½)" from cast-on edge, ending with WS row. Place removable markers at each edge to indicate Sleeve placement. Work even in patt until piece meas 23 (24, 24½, 25½, 26, 27, 27¼, 28)" from cast-on edge, ending with WS row.

Shape Back Neck

Row 1 (RS): Work in patt over 24 (28, 31, 35, 39, 42, 46, 50) sts, attach new ball of yarn and bind off center 32 (32, 34, 34, 34, 36, 36, 36) sts, work in patt over rem 24 (28, 31, 35, 39, 42, 46, 50) sts. Working both sides at once, bind off 2 sts at Neck edge, 2 times – 20 (24, 27, 31, 35, 38, 42, 46) sts rem. Work even, if necessary until piece meas 1" from Neck bind-off or 24 (25, 25½, 26½, 27, 28, 28¼, 29)" from cast-on edge, ending with WS row. Bind off all sts.

FRONT

Work as for Back until piece meas 21 (22, 22½, 23½, 24, 25, 25¼, 26)" from cast-on edge, ending with WS row.

Shape Front Neck

Row 1 (RS): Work in patt over 34 (38, 41, 45, 49, 52, 56, 60) Left Front sts, attach new ball of yarn and bind off center 12 (12, 14, 14, 14, 16, 16, 16) sts, work in patt over rem 34 (38, 41, 45, 49, 52, 56, 60) Right Front sts. Place Left Front sts on holder.

Right Front

Bind off 4 sts at beg of next RS row, 3 sts at beg of next RS row, and 2 sts at beg of next RS row – 25 (29, 32, 36, 40, 43, 47, 51) sts rem. Work a WS row even.

Dec row (RS): K1, k2tog, work in patt to end – 1 st dec'd. Rep Dec row every RS row, 3 more times, then every other RS row, 1 time – 20 (24, 27, 31, 35, 38, 42, 46) sts rem. Work even, if necessary until piece meas 3" from Neck bind-off or 24 (25, 25½, 26½, 27, 28, 28¼, 29)" from cast-on edge, ending with WS row. Bind off all sts.

Left Front

Return Left Front sts to ndl. Bind off 4 sts at beg of next WS row, 3 sts at beg of next WS row, and 2 sts at beg of next WS row – 25 (29, 32, 36, 40, 43, 47, 51) sts rem.

Dec row (RS): Work in patt to last 3 sts, ssk, k1 – 1 st dec'd. Rep Dec row every RS row, 3 more times, then every other RS row, 1 time – 20 (24, 27, 31, 35, 38, 42, 46) sts rem. Work even, if necessary until piece meas 3" from Neck bind-off or 24 (25, 25½, 26½, 27, 28, 28¼, 29)" from cast-on edge, ending with WS row. Bind off all sts.

SLEEVES

Cast on 40 (40, 40, 44, 44, 44, 48, 48) sts.

Cuff

Work in K1, P1 Ribbing for 2½".

Sleeve Body

Beg with Row 1, work in Broken K2, P2 Ribbing for 8 rows.

Inc row (RS): K1, m1, work in patt to last st, m1, k1 – 2 sts inc'd. Rep Inc row every 6 (6, 4, 4, 4, 4, 4) rows, 7 (15, 6, 6, 15, 21, 18, 21) more times, then rep Inc row every 8 (8, 6, 6, 6, 6, 6) rows,

Knit. Relax. Smile. Repeat!

2017 © Universal Yarn, Inc.

All rights reserved.

www.universalyarn.com

This pattern may not be reproduced for business, trade or sale.

8 (2, 14, 14, 8, 4, 6, 4) times – 72 (76, 82, 86, 92, 96, 98, 100) sts. Work even in patt until Sleeve meas 20" from cast-on edge, ending with WS row. Bind off all sts.

HOOD

Cast on 116 (116, 120, 120, 120, 124, 124, 124) sts. Beg with Row 1, work in Broken K2, P2 Ribbing for 14". Bind off all sts.

FINISHING

Block pieces to finished measurements. Position bind-off edge of Sleeve bet markers and seam. Sew side and Sleeve seams. Fold bind-off edge of hood in half and seam to form top edge.

Hood Edging

With RS facing, pick up and knit 100 sts evenly along front opening. Work in K1, P1 Ribbing for ¾". Bind off all sts in patt.

Sew Hood to Neck opening, overlapping Hood Edging at center front. Lower Hood

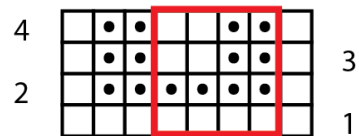


circumference will need to be eased into Neck opening. Weave in rem ends.

Abbreviations

beg	begin(ning)
dec('d)	decrease(d)
inc('d)	increase(d)
k	knit
k2tog	knit 2 stitches together (1 st dec'd)
m1	insert left needle from front to back under horizontal strand of yarn lying between st just worked and next st, knit or purl this st through the back loop (1 st inc'd)
meas	measures
ndl	needle
p	purl
patt	pattern
rem	remain(ing)
rep	repeat
RS	right side
ssk	slip next 2 sts individually knitwise, slip them back to left needle in this position, knit them together through the back loops (1 st dec'd)
st(s)	stitch(es)
WS	wrong side

Broken K2, P2 Ribbing



Key

- knit on RS, purl on WS
- purl on RS, knit on WS
- pattern repeat

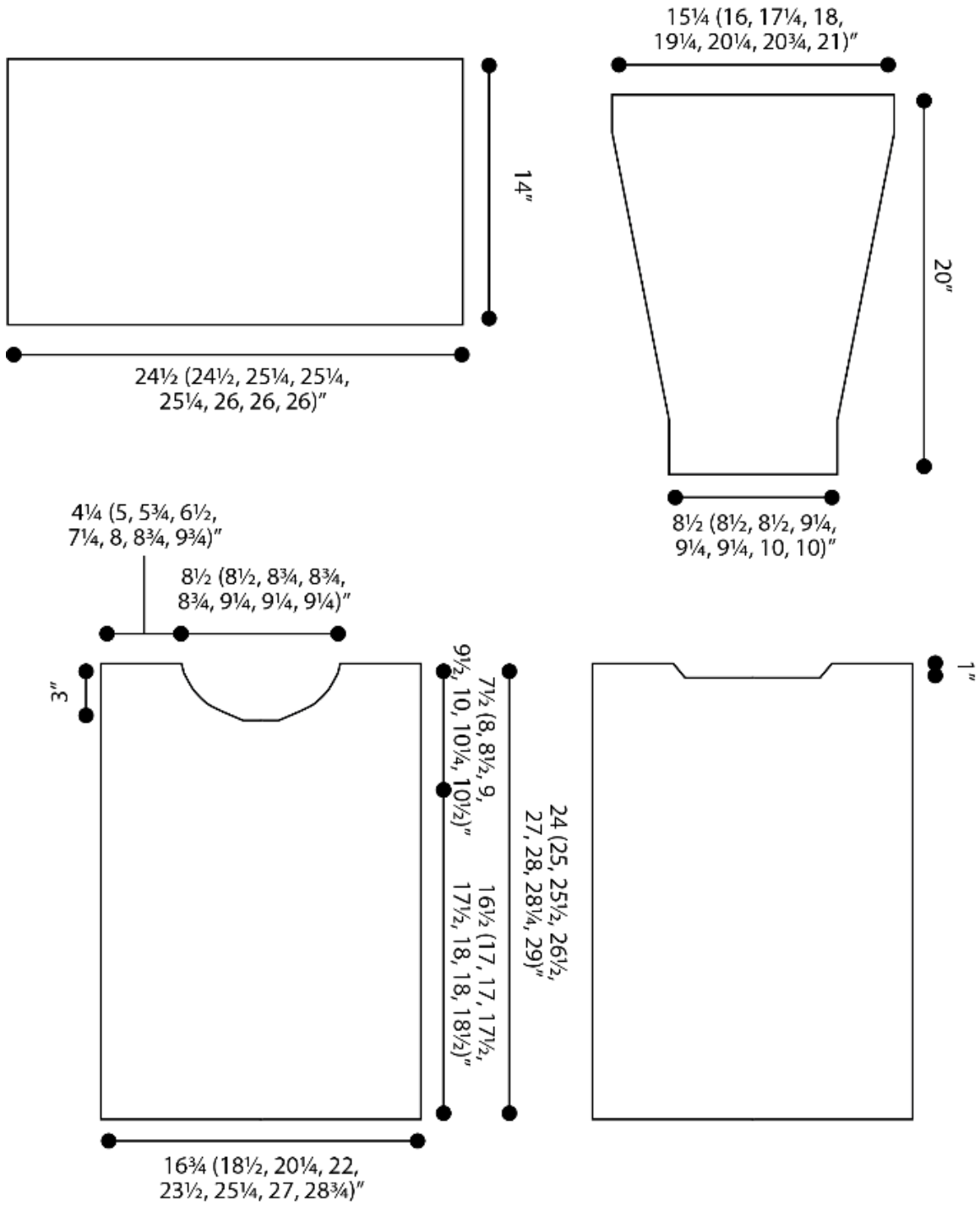
Knit. Relax. Smile. Repeat!

2017 © Universal Yarn, Inc.

All rights reserved.

www.universalyarn.com

This pattern may not be reproduced for business, trade or sale.



Knit. Relax. Smile. Repeat!

2017 © Universal Yarn, Inc.

All rights reserved.

www.universalyarn.com

This pattern may not be reproduced for business, trade or sale.