



Pattern Collection: Women



January Sweater

Designed by Rachel Brockman

DIFFICULTY

Easy

SIZES

Extra Small (Small, Medium, Large, 1X, 2X, 3X, 4X, 5X)

Shown in Small size with approx. 5" of positive ease.

FINISHED MEASUREMENTS

Bust: 35 (39, 43 $\frac{3}{4}$, 48, 52 $\frac{3}{4}$, 56 $\frac{3}{4}$, 61, 65 $\frac{1}{2}$, 68 $\frac{1}{2}$)"

Length: 21 $\frac{3}{4}$ (22 $\frac{1}{4}$, 22 $\frac{3}{4}$, 23 $\frac{3}{4}$, 24 $\frac{1}{4}$, 24 $\frac{3}{4}$, 25 $\frac{3}{4}$, 26 $\frac{1}{4}$, 26 $\frac{3}{4}$)"

MATERIALS

Rozetti Yarns Nymph (84% cotton, 16% polyamide; 50g/167 yds)

- 114 Goblet (MC) – 6 (7, 8, 9, 10, 11, 12, 13, 14) skeins
- 115 Blacksmith (CC1) – 1 (1, 2, 2, 2, 2, 3, 3) skein(s)
- 113 Swan (CC2) – 1 (1, 2, 2, 2, 2, 2, 3, 3) skein(s)

Needles: Needle A: US Size 5 (3.75 mm) 16", 32", and set of DPNs (or your preferred needle for knitting small circumferences)

Needle B: US Size 6 (4 mm) 16", 32", and set of DPNs (or your preferred needle for knitting small circumferences) (4 mm) or size needed to obtain gauge

Knit. Relax. Smile. Repeat!

2021 © Universal Yarn, Inc.

All rights reserved.

www.universalyarn.com

This pattern may not be reproduced for business, trade or sale.

Needle C: US Size 7 (4.5 mm) 16", 32", and set of DPNs (or your preferred needle for knitting small circumferences) (4 mm) *or size needed to obtain gauge*

Notions: Tapestry needle, stitch markers, stitch holder or waste yarn

GAUGE

22 sts x 28 rows = 4" in Stockinette stitch (St st) with Ndl B

22 sts x 28 rows = 4" in stranded knitting with Ndl C

Save time, check your gauge.

PATTERN NOTES

Snow flurries are a beautiful thing in the wintertime. White flakes dance across the landscape in a magical way, making you instantly feel calm and cozy. Such is the case with the January Sweater. The yoke colorwork motif echoes those dancing snowflakes and our Nymph yarn makes just about the softest and coziest sweater you can imagine.

This sweater is knit seamlessly in the round from the top down. After working the yoke, the body and sleeves are separated at the underarms and worked separately. When working the yoke pattern, you may wish to place stitch markers between each pattern repeat to help you stay on track.

STITCH GUIDE

K1, P1 Rib

(even number of sts)

Rnd 1: * K1, p1; rep from * to end.

Rep Rnd 1 for patt.

SWEATER

Yoke

Note 1: Change to longer circular needles when there are too many stitches to fit comfortably on 16" circular needle.

Note 2: Join CC1 and CC2 as indicated on Yoke chart.

With Ndl A 16" circ ndl and MC, cast on 88 (100, 104, 116, 124, 126, 126, 130, 130) sts. PM and join to knit in the rnd, being careful not to twist. Work in K1, P1 Rib for 7 (7, 9, 9, 11, 11, 13, 13, 13) rnds.

Change to Ndl B 16" circ.

Next Rnd: Knit.

SIZE 2X ONLY:

Inc Rnd: K6, [m1, k13] 3 times, [m1, k12] 3 times, [m1, k13] 3 times, m1, k6 – 10 sts inc'd, 136 sts.

Even Rnd: Knit.

SIZE 3X ONLY:

Inc Rnd: K3, [m1, k7] 17 times, m1, k4 – 18 sts inc'd, 144 sts.

Even Rnd: Knit.

SIZE 4X ONLY:

Inc Rnd: K2, [m1, k6] 10 times, [m1, k5] 1 time, [m1, k6] 10 times, m1, k3 – 22 sts inc'd, 152 sts.

Even Rnd: Knit.

SIZE 5X ONLY:

Inc Rnd: K2, [m1, k5] 5 times, [m1, k4] 19 times, [m1, k5] 5 times, m1, k2 – 30 sts inc'd, 160 sts.

ALL SIZES:

Rnds 1-5: Work Rnds 1-5 of Yoke patt to end. Patt will be repeated 22 (25, 26, 29, 31, 34, 36, 38, 40) times across each rnd. *Note: You may wish to place markers between each pattern repeat to help you stay on track.*

Change to Ndl C.

Rnds 6-8: Work Rnds 6-8 of Yoke patt to end.

Change to Ndl B.

Rnds 9-11: Work Rnds 9-11 of Yoke patt to end.

Change to Ndl C.

Rnds 12-16: Work Rnds 12-16 of Yoke patt to end.

Change to Ndl B.

Rnds 17-18: Work Rnds 17-18 of Yoke patt to end.

Change to Ndl C.

Rnds 19-27: Work Rnds 19-27 of Yoke patt to end.

Change to Ndl B.

Knit. Relax. Smile. Repeat!

2021 © Universal Yarn, Inc.

All rights reserved.

www.universalyarn.com

This pattern may not be reproduced for business, trade or sale.

Rnds 28-29: Work Rnds 28-29 of Yoke patt to end.

Change to Ndl C.

Rnds 30-34: Work Rnds 30-34 of Yoke patt to end.

Change to Ndl B.

Rnds 35-37: Work Rnds 35-37 of Yoke patt to end.

Change to Ndl C.

Rnds 38-40: Work Rnds 38-40 of Yoke patt to end.

Change to Ndl B. Break CC1 and CC2, cont with MC only.

Rnd 41: Knit.

After Yoke chart is complete, a total of 220 (250, 260, 290, 310, 340, 360, 380, 400) sts have been inc'd – 308 (350, 364, 406, 434, 476, 504, 532, 560) sts.

Cont even in St st until piece meas 7¼ (8¼, 8¾, 9¼, 9¾, 10¼, 10¾, 11¼, 11¾)" from cast-on edge.

SIZE EXTRA SMALL ONLY:

Inc Rnd: K19, [m1, k39] 2 times, [m1, k38] 3 times, [m1, k39] 2 times, m1, k19 – 8 sts inc'd, 316 sts.

SIZE MEDIUM ONLY:

Inc Rnd: K18, [m1, k37] 2 times, [m1, k36] 5 times, [m1, k37] 2 times, m1, k18 – 10 sts inc'd, 374 sts.

SIZE LARGE ONLY:

Inc Rnd: K33, [m1, k68] 2 times, [m1, k67] 1 time, [m1, k68] 2 times, m1, k34 – 6 sts inc'd, 412 sts.

SIZE 1X ONLY:

Inc Rnd: K27, [m1, k55] 1 time, [m1, k54] 5 times, [m1, k55] 1 time, m1, k27 – 8 sts inc'd, 442 sts.

SIZE 4X ONLY:

Inc Rnd: K22, [m1, k45] 2 times, [m1, k44] 7 times, [m1, k45] 2 times, m1, k22 – 12 sts inc'd, 544 sts.

SIZE 5X ONLY:

Inc Rnd: K17, [m1, k35] 15 times, m1, k18 – 16 sts inc'd, 576 sts.

ALL SIZES:

316 (350, 374, 412, 442, 476, 504, 544, 576) sts.

Next Rnd: Knit.

Separate Body and Sleeves

Separation Rnd: Slip next 64 (70, 72, 78, 82, 88, 92, 100, 110) Sleeve sts to holder or waste yarn, cast on 2 (2, 4, 4, 6, 6, 8, 8, 10) underarm sts, k94 (105, 115, 128, 139, 150, 160, 172, 178) Front Body sts, slip next 64 (70, 72, 78, 82, 88, 92, 100, 110) Sleeve sts to holder or waste yarn, cast on 2 (2, 4, 4, 6, 6, 8, 8, 10) underarm sts, k94 (105, 115, 128, 139, 150, 160, 172, 178) Back Body sts, pm to denote new bor – 192 (214, 238, 264, 290, 312, 336, 360, 376) sts rem for Body.

BODY

Change to 32" Ndl B.

Rnd 1: Knit.

Cont even in St st until piece meas 12¼ (12¼, 12¼, 12½, 12½, 12½, 12¾, 12¾, 12¾)" from Body/Sleeve separation.

Change to 32" Ndl A.

Hem

Work in K1, P1 Rib until piece meas 14 (14, 14, 14½, 14½, 14½, 15, 15, 15)" from Body/Sleeve separation. Bind off all sts in patt.

SLEEVES

With MC and Ndl B dpns, beg at center of underarm cast-on, pick up and knit 1 (1, 2, 2, 3, 3, 4, 4, 5) sts along cast-on edge, knit 64 (70, 72, 78, 82, 88, 92, 100, 110) Sleeve sts from holder or waste yarn, pick up and knit 1 (1, 2, 2, 3, 3, 4, 4, 5) sts along cast-on edge, pm to denote bor – 66 (72, 76, 82, 88, 94, 100, 108, 120) sts.

Rnd 1: Knit.

Cont even in St st until Sleeve meas ½" from underarm.

Shape Sleeve

Dec Rnd: K1, k2tog, knit to last 3 sts, ssk, k1 – 2 sts dec'd, 64 (70, 74, 80, 86, 92, 98, 106, 118) sts rem.

Rep Dec Rnd every 10 (8, 0, 6, 6, 6, 4, 4, 4) rnds, 4 (6, 0, 12, 6, 0, 23, 19, 13) more times, then rep Dec Rnd every 8 (6, 6, 4, 4, 4, 2, 2, 2) rnds, 6 (7, 15, 5, 14, 23, 1, 9, 21) time(s) – 20 (26, 30, 34, 40,

Knit. Relax. Smile. Repeat!

2021 © Universal Yarn, Inc.

All rights reserved.

www.universalyarn.com

This pattern may not be reproduced for business, trade or sale.

46, 48, 56, 68) sts dec'd, 44 (44, 44, 46, 46, 46, 50, 50, 50) sts rem.

Cont even in St st until Sleeve meas 15½" from underarm. Change to Ndl A dpns.

Cuff

Work in K1, P1 Rib until Sleeve meas 17½" from underarm. Bind off all sts in patt.

FINISHING

Gently wash and block to finished measurements. Weave in ends.

Abbreviations

approx	approximately
bef	before
beg	begin(ning)
bor	beginning of round
CC	contrast color
circ	circular
cont	continue
dec('d)	decrease(d)
est'd	established
inc('d)	increase(d)
k	knit
k2tog	knit 2 stitches together (1 st dec'd)
m	marker
m1	insert left needle from front to back under horizontal strand of yarn lying between st just worked and next st, knit or purl this st through the back loop (1 st inc'd)
MC	main color
meas	measures
ndl	needle
p	purl
patt	pattern
pm	place marker
rem	remain(ing)
rep	repeat
rnd	round
sl	slip

ssk	slip next 2 sts individually knitwise, slip them back to left needle in this position, knit them together through the back loops (1 st dec'd)
St st	Stockinette stitch (knit on RS rows, purl on WS rows; in the rnd, knit every rnd)
st(s)	stitch(es)



Knit. Relax. Smile. Repeat!

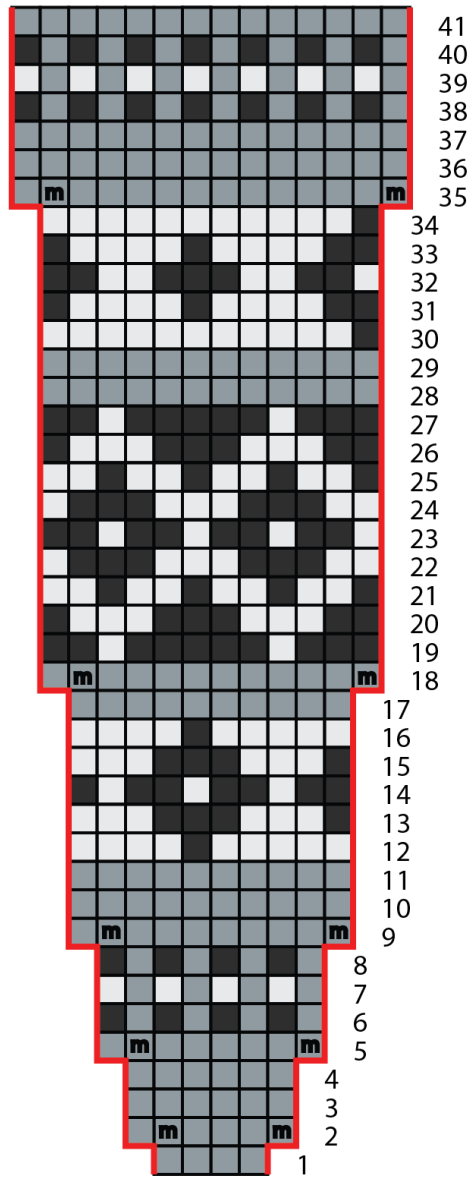
2021 © Universal Yarn, Inc.

All rights reserved.

www.universalyarn.com

This pattern may not be reproduced for business, trade or sale.

Yoke



Key

- pattern repeat
- with MC, knit
- with MC, m1
- with CC1, knit
- with CC2, knit

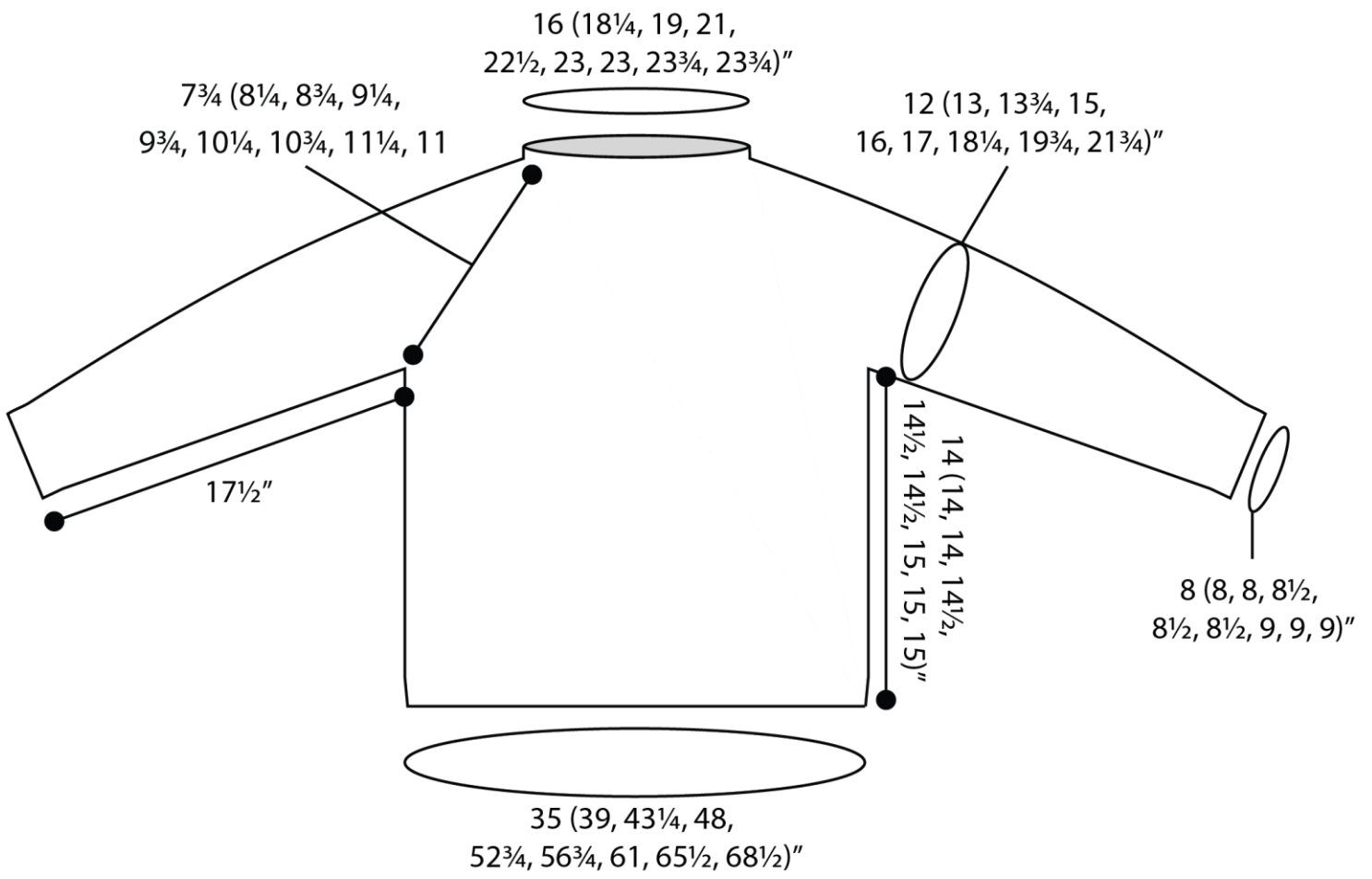
Knit. Relax. Smile. Repeat!

2021 © Universal Yarn, Inc.

All rights reserved.

www.universalyarn.com

This pattern may not be reproduced for business, trade or sale.



Knit. Relax. Smile. Repeat!

2021 © Universal Yarn, Inc.
 All rights reserved.
www.universalyarn.com

This pattern may not be reproduced for business, trade or sale.