



PATTERN COLLECTION: *ACCESSORIES*



In the Garden Shawl

Designed by Amy Gunderson

FINISHED MEASUREMENTS

Wingspan: 66"

Depth in Center: 32"

MATERIALS

Universal Yarn *Jubilation*

Kettle Dye Worsted (100% extra fine merino; 100g/208 yds)

- 104 Peony (MC) – 2 skeins

Universal Yarn *Deluxe*

Worsted (100% wool; 100g/220 yds)

- 12296 Green Leaf (CC) – 2 skeins

Needles: US Size 7 (4.5 mm)
32" circular *or size needed to obtain gauge*

Notions: Stitch markers,
tapestry needle

GAUGE

17 sts x 23 rows = 4" in St st

Save time, check your gauge.

Knit, Relax, Smile, Repeat!

2013 © Universal Yarn, Inc.

All rights reserved.

www.universalyarn.com

This pattern may not be reproduced for business, trade or sale.

STITCH GUIDE

2 Stitch-Wrap (2 st-W): * Sl next 2 sts pwise wyif, take yarn to back, sl these same 2 sts back to RH ndl, bring yarn back to front; rep from * 2 times, sl these same 2 sts to RH ndl – sts have been wrapped twice with yarn.

Garden Buds Increase

(begins with multiple of 4 sts + 2)

Row 1 (RS): K1, * k2tog, [yo] twice, ssk; rep from * to last st, k1.

Row 2 (WS): P2, [k1, p1 tbl] into double yo, * 2 st-W, [k1, p1 tbl] into double yo; rep from * to last 2 sts, p2.

Row 3: K2, yo, ssk, * k2tog, [yo] twice, ssk; rep from * to last 4 sts, k2tog, yo, k2.

Row 4: P3, * 2 st-W, [k1, p1 tbl] into double yo; rep from * to last 5 sts, 2 st-W, p3.

Row 5: K1, yo, ssk, * k2tog, [yo] twice, ssk; rep from * to last 3 sts, k2tog, yo, k1.

Row 6: P2, * 2 st-W, [k1, p1 tbl] into double yo; rep from * to last 4 sts, 2 st-W, p2.

Row 7: K2, * k2tog, [yo] twice, ssk; rep from * to last 2 sts, p2.

Row 8: P1, * 2 st-W, [k1, p1 tbl] into double yo; rep from * to last 3 sts, 2 st-W, p1.

Rep Rows 1-8 for patt.

Leaf Edging

(worked over 19 sts)

Row 1 (RS): Sl 1 pwise wyib, k1, p2, k9, p2, k1, p2, k2tog tbl (last st of edging tog with next st from Shawl body) – 1 st bound-off.

Row 2 (WS): Sl 1 pwise wyif, k2, p1, k2, p9, k2, p2.

Row 3: Sl 1 pwise wyib, k1, p2, ssk, k5, k2tog, p2, [k1, yo, k1] into next st, p2, k2tog tbl – 1 st bound-off.

Row 4: Sl 1 pwise wyif, k2, p3, k2, p7, k2, p2.

Row 5: Sl 1 pwise wyib, k1, p2, ssk, k3, k2tog, [k1, yo] twice, k1, p2, k2tog tbl – 1 st bound-off.

Row 6: Sl 1 pwise wyif, k2, p5, k2, p5, k2, p2.

Row 7: Sl 1 pwise wyib, k1, p2, ssk, k1, k2tog, p2, k2, yo, k1, yo, k2, p2, k2tog tbl – 1 st bound-off.

Row 8: Sl 1 pwise wyif, k2, p7, k2, p3, k2, p2.

Row 9: Sl 1 pwise wyib, k1, p2, sl 2-k1-p2sso, p2, k3, yo, k1, yo, k3, p2, k2tog tbl – 1 st bound-off.

Row 10: Sl 1 pwise wyif, k2, p9, k2, p1, k2, p2.

Row 11: Sl 1 pwise wyib, k1, p2, k1, p2, k9, p2, k2tog tbl – 1 st bound-off.

Row 12: Rep Row 10.

Row 13: Sl 1 pwise wyib, k1, p2, [k1, yo, k1] into next st, p2, ssk, k5, k2tog, p2, k2tog tbl – 1 st bound-off.

Row 14: Sl 1 pwise wyif, k2, p7, k2, p3, k2, p2.

Row 15: Sl 1 pwise wyib, k1, p2, [k1, yo] twice, k1, p2, ssk, k3, k2tog, p2, k2tog tbl – 1 st bound-off.

Row 16: Sl 1 pwise wyif, k2, p5, k2, p5, k2, p2.

Row 17: Sl 1 pwise wyib, k1, p2, k2, yo, k1, yo, k2, p2, ssk, k1, k2tog, p2, k2tog tbl – 1 st bound-off.

Row 18: Sl 1 pwise wyif, k2, p3, k2, p7, k2, p2.

Row 19: Sl 1 pwise wyib, k1, p2, k3, yo, k1, yo, k3, p2, sl 2-k1-p2sso, p2, k2tog tbl – 1 st bound-off.

Row 20: Rep Row 2.

Rep Rows 1-20 for patt.

SHAWL

Starting Tab

With MC, cast on 4 sts. Knit 8 rows. At the end of the last row, do not turn. Pick up and knit 5 sts along edge of Tab, pick up and knit 4 sts along cast-on edge – 13 sts.

Set-up row (WS): K6, pm, k1, pm, k6.

Plain Section 1

- **Garter**

Inc row (RS): K2, yo, knit to m, yo, k1, yo, knit to last 2 sts, yo, k2 – 4 sts inc'd.

Next row (WS): Knit to m, p1, knit to end.

Rep these 2 rows, 4 more times – 33 sts.

- **Stockinette**

Inc row (RS): K2, yo, knit to m, yo, k1, yo, knit to last 2 sts, yo, k2 – 4 sts inc'd.

Next row (WS): K3, purl to last 3 sts, k3.

Rep these 2 rows, 1 more time – 41 sts.

- **Garter**

Inc row (RS): K2, yo, knit to m, yo, k1, yo, knit to last 2 sts, yo, k2 – 4 sts inc'd.

Next row (WS): Knit to m, p1, knit to end.

Rep these 2 rows, 3 more times – 57 sts.

Pattern Section 1

Row 1 (RS): K2, yo, work Row 1 of Garden Buds Increase patt to m, yo, k1, yo, work Row 1 of

Knit. Relax. Smile. Repeat!

2013 © Universal Yarn, Inc.

All rights reserved.

www.universalyarn.com

This pattern may not be reproduced for business, trade or sale.

Garden Buds Increase patt to last 2 sts, yo, k2 – 4 sts inc'd.

Row 2 (WS): K3, work Row 2 of Garden Buds Increase patt to 1 st bef m, p3, work Row 2 of Garden Buds Increase patt to last 3 sts, k3. Cont in patt as est'd through Row 8 of patt, then rep Rows 1-8, 1 more time – 89 sts.

Plain Section 2

Work Garter, Stockinette, and Garter as for Plain Section 1 – 129 sts.

Pattern Section 2

Work as for Pattern Section 1 – 161 sts.

Plain Section 3

Work Garter, Stockinette, and Garter as for Plain Section 1 – 201 sts.

Pattern Section 3

Work as for Pattern Section 1 – 233 sts.

Plain Section 4

- **Garter**

Inc row (RS): K2, yo, knit to m, yo, k1, yo, knit to last 2 sts, yo, k2 – 4 sts inc'd.

Next row (WS): Knit to m, p1, knit to end. Rep these 2 rows, 4 more times – 249 sts.

- **Stockinette**

Inc row (RS): K2, yo, knit to m, yo, k1, yo, knit to last 2 sts, yo, k2 – 4 sts inc'd.

Next row (WS): K3, purl to last 3 sts, k3. Rep these 2 rows, 1 more time – 257 sts. Break MC.

Edging

Set-up Row 1 (RS): With MC, K2, yo, knit to m, yo, k1, yo, knit to last 2 sts, yo, k2 – 261 sts.

Set-up Row 2 (WS): Knit to m, p1, knit to end.

Break MC, complete Edging using CC only. Cast on 19 sts to first st using knitted cast-on.

Row 1 (RS): Work Row 1 of Leaf Edging over 19 sts – 1 st from Shawl Body bound-off.

Row 2: Work Row 2 of Leaf Edging.

Cont in patt through Row 20 of Leaf Edging, then rep Rows 1-20, 12 more times. 131 sts rem from Shawl body (half the sts plus the center st.

Work Rows 1 & 2 of Leaf Edging – 130 sts rem. Rep Rows 1-20 of Leaf Edging, 12 more times, then Rep Rows 1-19, 1 more time – all sts from Shawl Body have been bound-off. Bind off rem 19 Edging sts from the WS, pwise.

FINISHING

Weave in ends. Wet block, stretching down Edging to fit.



Knit. Relax. Smile. Repeat!

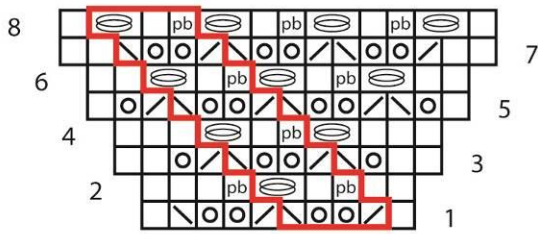
2013 © Universal Yarn, Inc.

All rights reserved.

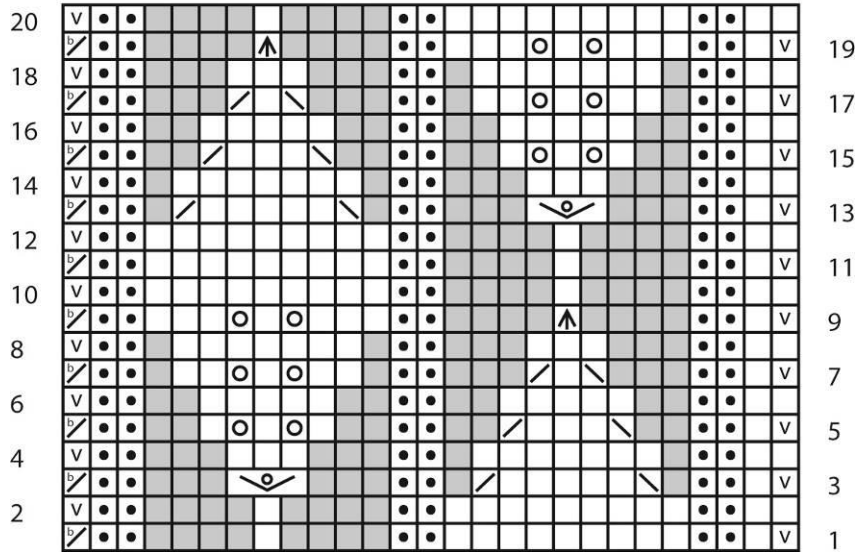
www.universalyarn.com

This pattern may not be reproduced for business, trade or sale.

Garden Buds Increase



Leaf Edging



Key

- knit on RS, purl on WS
- purl on RS, knit on WS
- yo
- k2tog
- ssk
- 2 st-W
- p1 tbl
- sl 1 pwise wyib on RS, sl 1 pwise wyif on WS
- k2tog tbl
- [k1, yo, k1] into same st
- sl2-k1-p2sso
- patt rep



Knit. Relax. Smile. Repeat!

2013 © Universal Yarn, Inc.
All rights reserved.
www.universalyarn.com

This pattern may not be reproduced for business, trade or sale.