



## Pattern Collection: Women



### Interlacement Sweater

Designed by Universal Yarn Design Team

#### SIZE

Small (Medium, Large, 1X, 2X 3X)

#### FINISHED MEASUREMENTS

**Bust:** 35 (39, 43, 47, 51, 55)''

#### MATERIALS

**Universal Yarn Deluxe Worsted** (100% wool; 100g/220 yds)

- 71006 White Ash – 3 (4, 4, 5, 5, 6) hanks

**Needles:** US Size 7 (4.5 mm) 24'' circular, set of dpns *or size needed to obtain gauge*  
US Size 8 (5 mm) 24'' circular

**Notions:** Tapestry needle, stitch holder

#### GAUGE

16 sts x 24 rows = 4'' in St st

**Save time, check your gauge.**

*Knit, Relax, Smile, Repeat!*

2016 © Universal Yarn, Inc.

All rights reserved.

[www.universalyarn.com](http://www.universalyarn.com)

This pattern may not be reproduced for business, trade or sale.

## STITCH GUIDE

**Left Twist (LT):** Knit the second st on the left ndl through the back loop, knit the first st through the front loop, slip both sts from ndl.

### K1, P1 Ribbing

*(even number of sts)*

**Row 1:** \* K1, p1; rep from \* to end.

Rep Row 1 for patt.

### Lace Panel

*(panel of 20 sts)*

**Row 1 (RS):** P1, yo, k1, sssk, k1, yo, p1, LT, p2, LT, p1, yo, k1, sssk, k1, yo, p1.

**WS Rows 2-6 (WS):** K1, p5, k1, p2, k2, p2, k1, p5, k1.

**Row 3:** P1, k1, yo, sssk, yo, k1, p1, LT, p2, LT, p1, k1, yo, sssk, yo, k1, p1.

**Row 5:** P1, k5, p1, LT, p2, LT, p1, k5, p1.

Rep Rows 1-5 for patt.

## BACK

With smaller ndl, cast on 70 (78, 86, 94, 102, 110) sts. Work in K1, P1 Ribbing for 1". Switch to larger ndl. Work in St st until piece meas 13 (13½, 13½, 14, 14, 14½)" from cast-on edge, ending with WS row.

### Armhole Shaping

Bind off 5 (6, 6, 7, 7, 8) sts at beg of next 2 rows – 60 (66, 74, 80, 88, 94) sts rem. Dec 1 st at each side every row, 0 (2, 4, 6, 8, 8) times, then Dec 1 st at each side every RS row, 2 (2, 3, 3, 4, 5) times – 56 (58, 60, 62, 64, 68) sts rem. Work even in St st until Armhole meas 8 (8½, 9, 9½, 9¾, 10)" , ending with WS row.

### Shape Shoulders

Bind off 5 (5, 5, 5, 5, 6) sts at beg of next 2 rows, 5 (5, 5, 6, 6, 6) sts at beg of next 2 rows, and 5 (6, 6, 6, 6, 7) sts at beg of next 2 rows. Bind off rem 26 (26, 28, 28, 30, 30) Neck sts.

## FRONT

With smaller ndl, cast on 70 (78, 86, 94, 102, 110) sts. Work in K1, P1 Ribbing for 1". Switch to larger ndl.

## Establish Pattern

**Row 1 (RS):** K25 (29, 33, 37, 41, 45), pm, work Row 1 of Lace Panel over 20 sts, pm, k25 (29, 33, 37, 41, 45).

**Row 2 (WS):** Purl to m, work Row 2 of Lace Panel to m, purl to end.

Cont in patt as est'd until piece meas 13 (13½, 13½, 14, 14, 14½)" from cast-on edge, ending with WS row.

### Armhole Shaping

Bind off 5 (6, 6, 7, 7, 8) sts at beg of next 2 rows – 60 (66, 74, 80, 88, 94) sts rem. Dec 1 st at each side every row, 0 (2, 4, 6, 8, 8) times, then Dec 1 st at each side every RS row, 2 (2, 3, 3, 4, 5) times – 56 (58, 60, 62, 64, 68) sts rem. Work even in St st until Armhole meas 3½ (3¾, 4¼, 4½, 4¾, 4¾)" , ending with WS row.

### Shape Neck

**Row 1 (RS):** Work to 2 sts bef m, k2tog, sl m, work in patt to m, sl m, ssk, knit to end – 2 sts dec'd.

**Row 2 (WS):** Purl to m, sl m, work in patt to m, sl m, purl to end.

**Rows 3-4:** Rep Rows 1-2.

**Row 5:** Work to 2 sts bef m, k2tog, sl m, work in patt over first 9 sts of Lace Panel, place next 2 sts on holder, attach new ball of yarn, work in patt over next 9 sts of Lace Panel to m, sl m, ssk, knit to end.

Working both sides at once, cont to dec at each side of Neck every RS row, 10 (10, 11, 11, 12, 12) more times – 15 (16, 16, 17, 17, 19) sts rem each Shoulder. Work even, if necessary, until Armhole meas 8 (8½, 9, 9½, 9¾, 10)" , ending with WS row. Shape Shoulders as for Back.

## SLEEVES

With smaller ndl, cast on 30 (32, 32, 34, 34, 36) sts. Work in K1, P1 Ribbing for 1". Switch to larger ndl. Work in St st for 2 rows.

**Inc row (RS):** K1, m1, work in patt to last st, m1, k1 – 2 sts inc'd. Rep Inc row every 6 (6, 4, 4, 4, 4) rows, 7 (11, 5, 6, 12, 15) more times, then rep Inc row ever 8 (-, 6, 6, 6, 6) rows, 3 (-, 8, 8, 4, 2) times – 52 (56, 60, 64, 68, 72) sts. Work even in St st until piece meas 16 (16, 16, 16½, 16½, 16½)" from cast-on edge, ending with WS row.

### Shape Cap

Bind off 5 (6, 6, 7, 7, 8) sts at beg of next 2 rows – 42 (44, 48, 50, 54, 56) sts rem.

**Dec row (RS):** K1, k2tog, knit to last 3 sts, ssk, k1 – 2 sts dec'd. Rep Dec row every other RS row, 5 (5, 5, 5, 6, 6) more times, then rep Dec row every RS row, 5 (6,

*Knit. Relax. Smile. Repeat!*

2016 © Universal Yam, Inc.

All rights reserved.

[www.universalyam.com](http://www.universalyam.com)

This pattern may not be reproduced for business, trade or sale.

7, 8, 8, 9) times – 20 (20, 22, 22, 24, 24) sts rem.  
 Bind off 2 (2, 2, 2, 3, 3) sts at beg of next 2 rows,  
 bind off 2 (2, 3, 3, 3, 3) sts at beg of next 2 rows.  
 Bind off rem 12 sts.

### FINISHING

Block pieces to finished measurements. Sew shoulder seams. Sew Sleeve Caps into Armholes. Sew Sleeve and side seams

### Neck Edging

With smaller circ ndl, pick up and knit 26 (26, 28, 28, 30, 30) sts, 22 (23, 23, 24, 24, 26) sts along Left Front Neck, knit across 2 held sts, pick up and knit 22 (23, 23, 24, 24, 26) sts along Right Front Neck – 72 (74, 76, 78, 80, 84) sts. PM and join to work in the rnd.

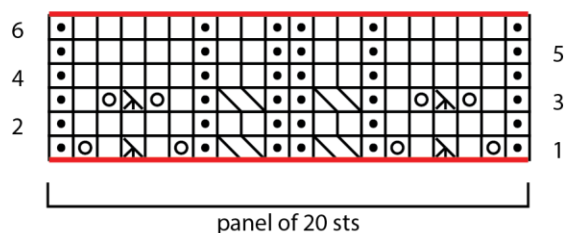
**Rnd 1:** \* K1, p1; rep from \* to end. Rep Rnd 1, 3 more times. Bind off all sts. Weave in ends. Block Edging.

### Abbreviations

<b>cont</b>	continue
<b>inc('d)</b>	increase(d)
<b>k</b>	knit
<b>k2tog</b>	knit 2 stitches together (1 st dec'd)
<b>m1</b>	insert left needle from front to back under horizontal strand of yarn lying between st just worked and next st, knit or purl this st through the back loop (1 st inc'd)
<b>m</b>	marker
<b>meas</b>	measures
<b>ndl</b>	needle
<b>patt</b>	pattern
<b>pm</b>	place marker
<b>pwise</b>	purlwise
<b>rem</b>	remain(ing)
<b>rep</b>	repeat
<b>rnd</b>	round
<b>RS</b>	right side
<b>sl</b>	slip
<b>ssk</b>	slip next 2 sts individually knitwise, slip them back to left needle in this position, knit them together through the back loops (1 st dec'd)

<b>sssk</b>	slip next 3 sts individually knitwise, slip them back to left needle in this position, knit them together through the back loops (2 sts dec'd)
<b>st(s)</b>	stitch(es)
<b>St st</b>	Stockinette stitch (knit on RS rows, purl on WS rows; in the rnd, knit every rnd)
<b>tog</b>	together
<b>WS</b>	wrong side
<b>yo</b>	yarn over

Lace Panel



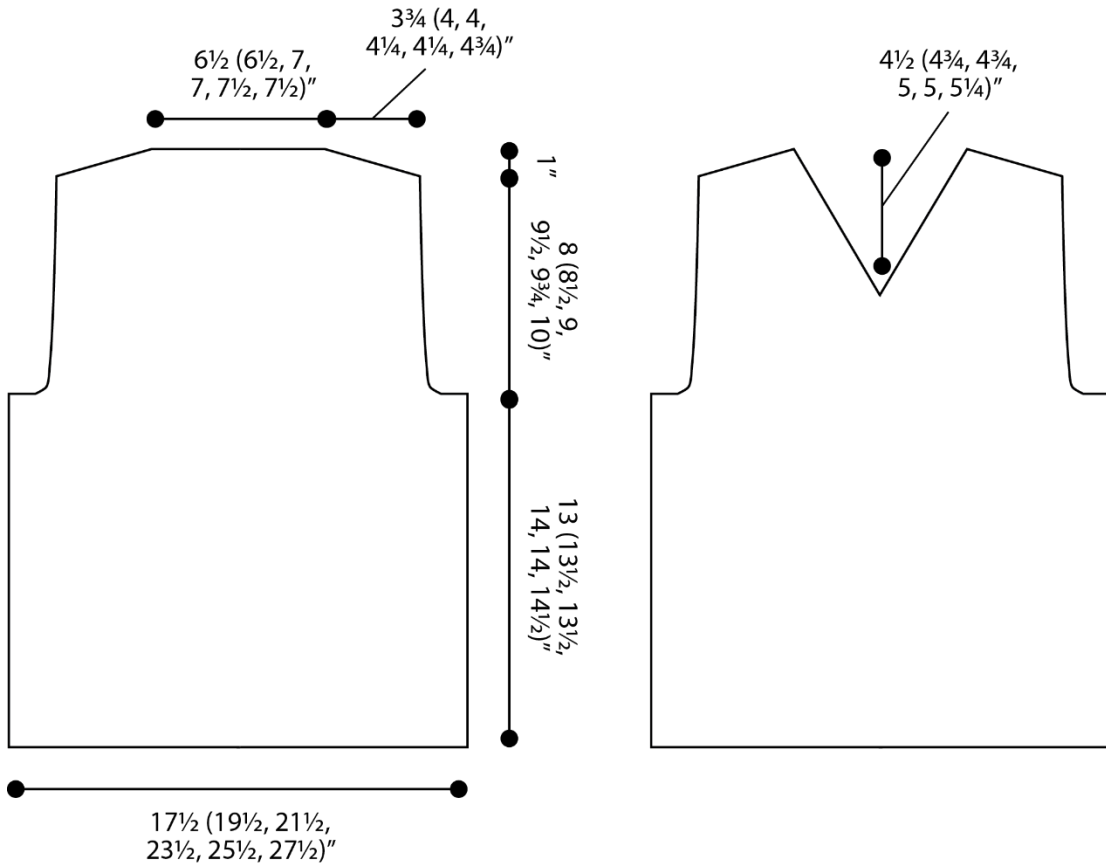
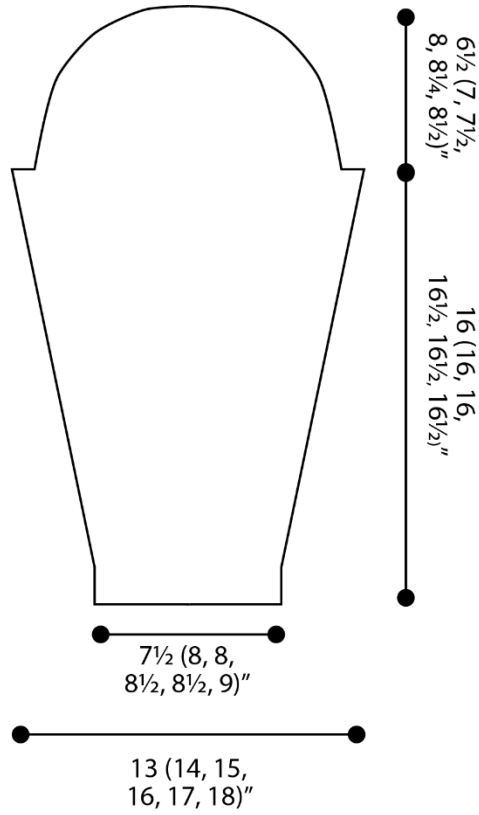
### Key

	pattern repeat
	knit on RS, purl on WS
	purl on RS, knit on WS
	yo
	sssk
	LT

*Knit. Relax. Smile. Repeat!*

2016 © Universal Yam, Inc.  
 All rights reserved.  
 www.universalyam.com

This pattern may not be reproduced for business, trade or sale.



*Knit. Relax. Smile. Repeat!*

2016 © Universal Yam, Inc.

All rights reserved.

[www.universalyam.com](http://www.universalyam.com)

This pattern may not be reproduced for business, trade or sale.