



Pattern Collection: Accessories



I Heart You Shawl

Designed by Universal Yarn Design Team

FINISHED MEASUREMENTS

Width: 24"

Height: 60"

MATERIALS

Wisdom Yarns Naked Sock (93% acrylic, 7% pbt; 100g/470 yds)

- 104 Cardinal Rule – 2 balls

Needles: US Size 5 (3.75 mm) 24" circular, dpn *or size needed to obtain gauge*

Notions: Stitch markers, tapestry needle

GAUGE

22 sts x 28 rows = 4" in All-Over Lace patt

Save time, check your gauge.

Knit, Relax, Smile, Repeat!

2015 © Universal Yarn, Inc.

All rights reserved.

www.universalyarn.com

This pattern may not be reproduced for business, trade or sale.

STITCH GUIDE

All-Over Lace (*multiple of 6 sts*)

Row 1 (RS): Sl 1 pwise wyib, k2, * [yo, k1] 2 times, sl 2-k1-p2sso, k1; rep from * to last 3 sts, k3.

WS Rows 2-8: Sl 1 pwise wyif, k2, purl to last 3 sts, k3.

Row 3: Sl 1 pwise wyib, k2, * yo, k3, yo, sl 2-k1-p2sso; rep from * to last 3 sts, k3.

Row 5: Sl 1 pwise wyib, k2, * k1, sl 2-k1-p2sso, [k1, yo] 2 times; rep from * to last 3 sts, k3.

Row 7: Sl 1 pwise wyib, k2, * sl 2-k1-p2sso, yo, k3, yo; rep from * to last 3 sts, k3.

Rep Rows 1-8 for patt.

Border (*begins with 7 sts*)

Row 1 (RS): Sl 1 pwise wyif, k2, yo, k2tog, [yo] 2 times, k2tog – 8 sts.

Row 2 (WS): Yo, k1, [k1, p1] into double yo, k2, yo, k2tog, k2tog tbl (last Border st tog with Stole body st) – 9 sts.

Row 3: Sl 1 pwise wyif, k2, yo, k2tog, k4.

Row 4: K6, yo, k2tog, k2tog tbl (last Border st tog with Stole body st).

Row 5: Sl 1 pwise wyif, k2, yo, {k2tog, [yo] 2 times} 2 times, k2tog – 11 sts.

Row 6: {K1, [k1, p1] into double yo,} 2 times, k2, yo, k2tog tbl (last Border st tog with Stole body st).

Row 7: Sl 1 pwise wyif, k2, yo, k2tog, k6.

Row 8: K8, yo, k2tog, k2tog tbl (last Border st tog with Stole body st).

Row 9: Sl 1 pwise wyif, k2, yo, {k2tog, [yo] 2 times} 3 times, k2tog – 14 sts.

Row 10: {K1, [k1, p1] into double yo} 3 times, k2, yo, k2tog tbl (last Border st tog with Stole body st).

Row 11: Sl 1 pwise wyif, k2, yo, k2tog, k9.

Row 12: Bind off 7 sts, knit to last 3 sts, yo, k2tog, k2tog tbl (last Border st tog with Stole body st) – 7 sts rem.

Rep Rows 1-12 for patt.

PATTERN

STOLE

Cast on 90 sts using a provisional method.

Set-up row: Sl 1, knit to end. Rep Rows 1-8 of All-Over Lace patt until piece meas 54", ending with WS row. Cut yarn leaving sts on ndl.

Border

Cast on 7 sts to dpn using a provisional method. * Rep Rows 1-12 of Border patt, 15 times – all sts from end of Stole have been bound-off. With circ ndl, pick up 1 st for each slipped st along side of Stole, adjusting stitch count if necessary so that there are a multiple of 6 sts. Rep Rows 1-12 of Border patt until all sts along side of Stole have been worked. Place loops from provisional cast on onto circ ndl; rep from *, 1 more time. Graft ends of Border together using Kitchener stitch.

FINISHING

Weave in ends. Wet or steam block firmly, pinning out points from edging.

Abbreviations

approx	approximately
bef	before
beg	begin(ning)
cont	continue
dec('d)	decrease(d)
inc('d)	increase(d)
k	knit
k2tog	knit 2 stitches together (1 st dec'd)
kwise	knitwise
LH	left hand
m	marker
m1	insert left needle from front to back under horizontal strand of yarn lying between st just worked and next st, knit or purl this st through the back loop (1 st inc'd)
meas	measures
ndl	needle
patt	pattern
p	purl
pm	place marker
pwise	purlwise
p2tog	purl 2 sts together (1 st dec'd)
pssso	pass slipped stitch(es) over
rem	remain(ing)
rep	repeat
RH	right hand
RS	right side
sc	single crochet
sl	slip

Knit. Relax. Smile. Repeat!

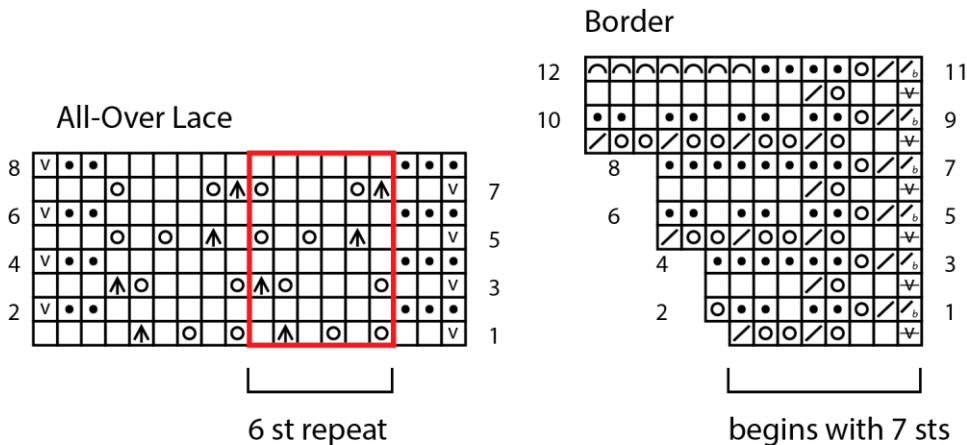
2015 © Universal Yarn, Inc.

All rights reserved.

www.universalyarn.com

This pattern may not be reproduced for business, trade or sale.

- ssk** slip next 2 sts individually knitwise, slip them back to left needle in this position, knit them together through the back loops (1 st dec'd)
- ssp** slip next 2 sts individually knitwise, slip them back to left needle in this position, purl them together through the back loops (1 st dec'd)
- st(s)** stitch(es)
- St st** Stockinette stitch (knit on RS rows, purl on WS rows; in the rnd, knit every rnd)
- tbl** through the back loop(s)
- tog** together
- WS** wrong side
- wyib** with yarn held in back
- wyif** with yarn held in front
- yo** yarn over



Key

- knit on RS, purl on WS
- purl on RS, knit on WS
- sl 1 pwise with yarn to the WS of the work
- sl 1 pwise with yarn to the RS of the work
- yarn over
- k2tog on RS or WS
- sl2-k1-p2sso
- k2tog tbl (last edging st with shawl body st)
- bind off 1 st
- patt rep

Knit. Relax. Smile. Repeat!

2015 © Universal Yarn, Inc.

All rights reserved.

www.universalyarn.com

This pattern may not be reproduced for business, trade or sale.