



Pattern Collection: Accessories



Hope Springs

Designed by Amy Gunderson

DIFFICULTY

Intermediate

SIZES

One Size

FINISHED MEASUREMENTS

Wingspan: 36"

Depth: 18"

MATERIALS

Fibra Natura Cottonwood (100% organic cotton; 50g/115 yds)

- 41113 Sally – 6 balls

Needles: US Size 6 (4 mm) 40" circular, set of dpns *or size needed to obtain gauge*

Notions: Tapestry needle, stitch markers, cable needle (cn)

GAUGE

18 sts x 24 rows = 4" in Lace patt

22-st Center Panel = 3½" wide

Save time, check your gauge.

Knit. Relax. Smile. Repeat!

2020 © Universal Yarn, Inc.

All rights reserved.

www.universalyarn.com

This pattern may not be reproduced for business, trade or sale.

PATTERN NOTES

This small shawl is knit from the top down and is a three-quarter circle shape. Lace, ribbing, and meandering cables are sure to keep you entertained. Increases occur during all sections in the beginning, and then just in lace and ribbing sections for the bulk of the shawl.

Due to the large number of stitch patterns, they are in chart form only.

I-Cord Bind-Off

Cast on 3 sts to first st on left ndl using knitted cast-on. * K2, k2tog tbl (1 st bound off), slip these 3 sts back to left ndl; rep from * until all sts have been bound off. Bind off rem 3 I-Cord sts.

STITCH GUIDE

2x1 Right Purl Cross (RPC): Sl next st to cn and hold in back, k2 from left ndl, p1 from cn.

2x1 Left Purl Cross (LPC): Sl next 2 sts to cn and hold in front, p1 from left ndl, k2 from cn.

2x2 Right Cross (RC): Sl next 2 sts to cn and hold in back, k2 from left ndl, k2 from cn.

2x4x2 Right Purl Cross (RPC): Sl next 6 sts to cn and hold in back, k2 from left ndl, sl the last of the 4 cn sts back to the left ndl and p4, k2 from cn.

SHAWL

Cast on 4 sts.

Row 1 (WS): Purl.

Row 2 (RS): Sl 2 pwise wyib, k2. Rows 3-11: Rep Rows 1 & 2.

Next row (RS): Sl 2 pwise wyib, k2, rotate work 90 degrees, pick up and knit 11 sts along side of tab, pick up and knit 4 sts from cast-on edge – 19 sts.

Next row (WS): P2, pm, [p2, pm, p1, pm] 2 times, p1, k1, p1, pm, [p1, pm, p2, pm] 2 times, p2.

Establish Pattern, Initial Increase Section

Row 1 (RS): Sl 2 pwise wyib, sl m, work Row 1 of Right Winding patt to m, work Row 1 of Ribbing patt to m, work Row 1 of Right Winding patt to m, work Row 1 of Right Lace patt to m, work Row 1 of Center Panel patt to m, work Row 1 of Left

Lace patt to m, work Row 1 of Left Winding patt to m, work Row 1 of Ribbing patt to m, work Row 1 of Left Winding patt to m, sl 2 pwise wyib.

Row 2 (WS): P2, work in est'd patts to last 2 sts, p2.

Rows 3-16: Cont in patt through Row 16 of all patts – 120 sts; 2 sts each edge, 12 sts each Winding section, 14 sts each Rib section, 9 sts each Lace section, and 22 sts in Center Panel section.

Main Increase Section

Note: Going forward, stitches will increase only in Right Lace, Left Lace, and Ribbing sections. Stitch counts in remaining sections will remain the same.

Row 1 (RS): Sl 2 pwise wyib, sl m, work Row 17 of Right Winding patt to m, work Row 17 of Ribbing patt to m, work Row 17 of Right Winding patt to m, work Row 17 of Right Lace patt to m, work Row 17 of Center Panel patt to m, work Row 17 of Left Lace patt to m, work Row 17 of Left Winding patt to m, work Row 17 of Ribbing patt to m, work Row 17 of Left Winding patt to m, sl 2 pwise wyib – 6 sts inc'd; 1 section in each Lace section, 2 sts in each Ribbing section.

Row 2 (WS): P2, work in est'd patts to last 2 sts, p2.

Cont as est'd, following patt reps for all sections, for another 88 rows – 390 sts; 54 sts each Lace section, 104 sts in each Ribbing section. Bind off all sts using I-Cord Bind-Off.

FINISHING

Weave in ends. Wet or steam block. Use blocking wires and pins to stretch out shawl fully. Let dry before removing from blocking board.

Abbreviations

| | |
|------------------|--------------------------|
| circ | circular |
| cont | continue |
| cn | cable needle |
| dpn(s) | double pointed needle(s) |
| est'd | established |
| garter st | knit every row |
| inc('d) | increase(d) |
| k | knit |

Knit. Relax. Smile. Repeat!

2020 © Universal Yarn, Inc.

All rights reserved.

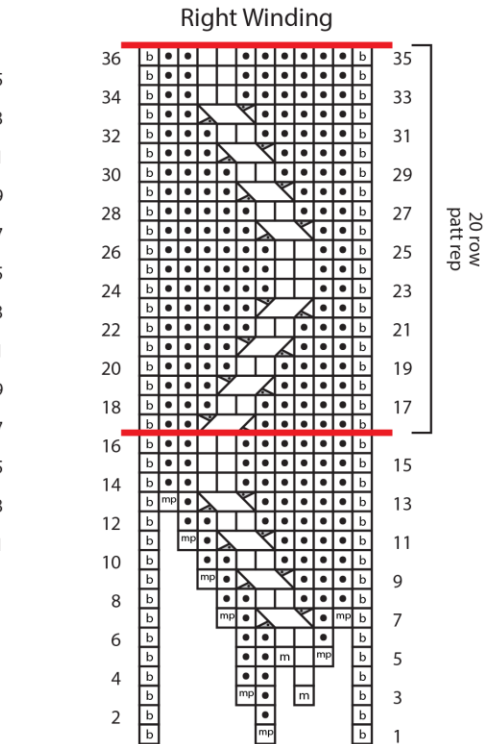
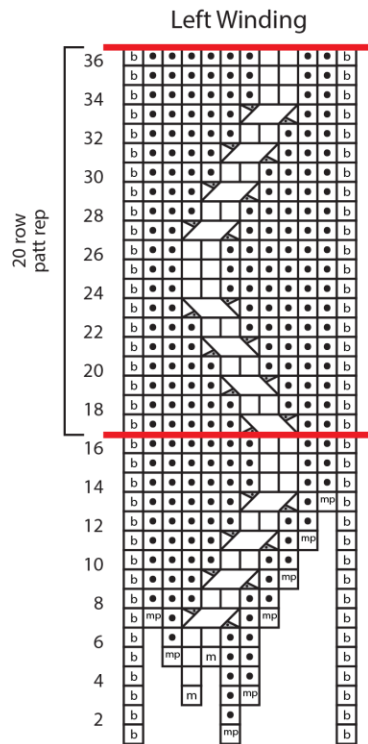
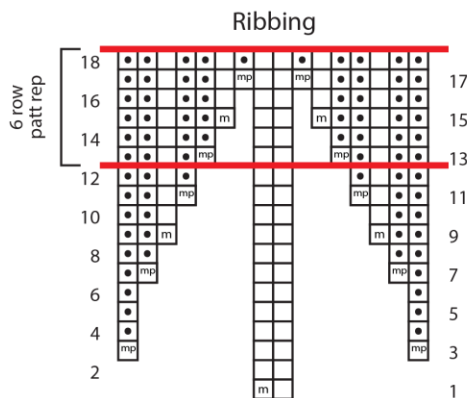
www.universalyarn.com

This pattern may not be reproduced for business, trade or sale.

k2tog knit 2 stitches together (1 st dec'd)
kwise knitwise
m marker
p purl
patt pattern
pm place marker
rep repeat
RS right side
sl slip
st(s) stitch(es)
WS wrong side
yo yarn over

Key

- knit on RS, purl on WS
- purl on RS, knit on WS
- k1 tbl on RS, p1 tbl on WS
- m make 1 knit
- mp make 1 purl
- k2tog
- ssk
- sl 2-k1-p2sso
- p2tog
- yo
- 2x1 RPC
- 2x1 LPC
- 2x2 RC
- 2x4x2 RPC



Knit. Relax. Smile. Repeat!

2020 © Universal Yarn, Inc.

All rights reserved.

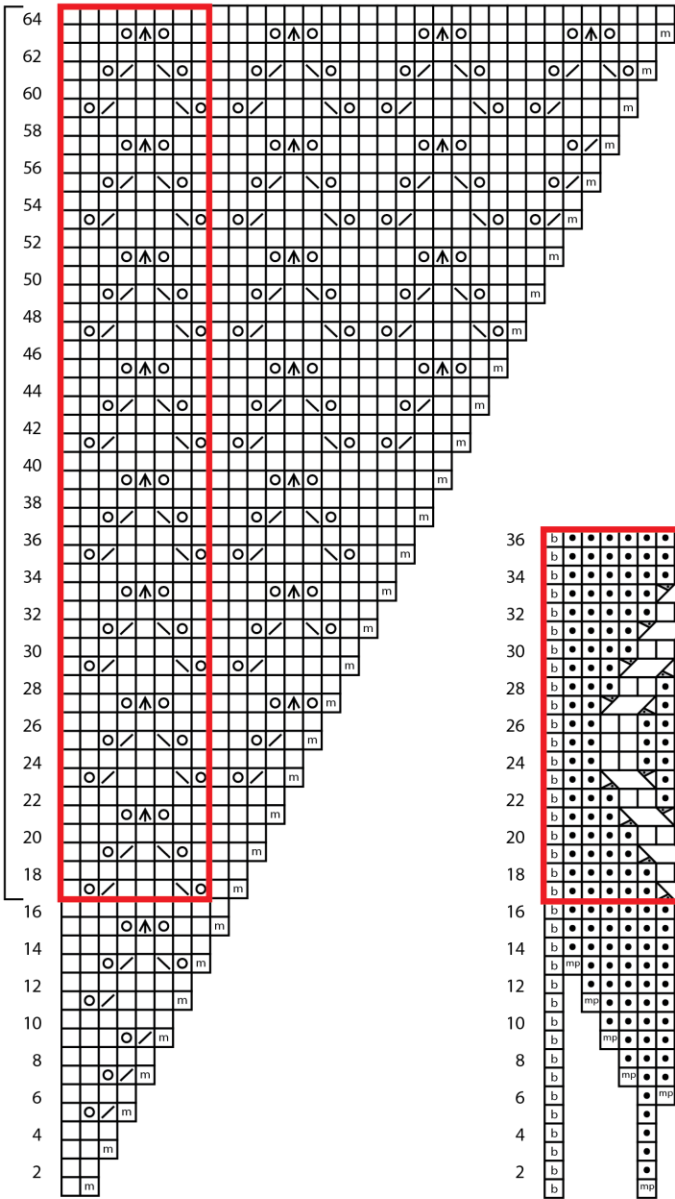
www.universalyarn.com

This pattern may not be reproduced for business, trade or sale.

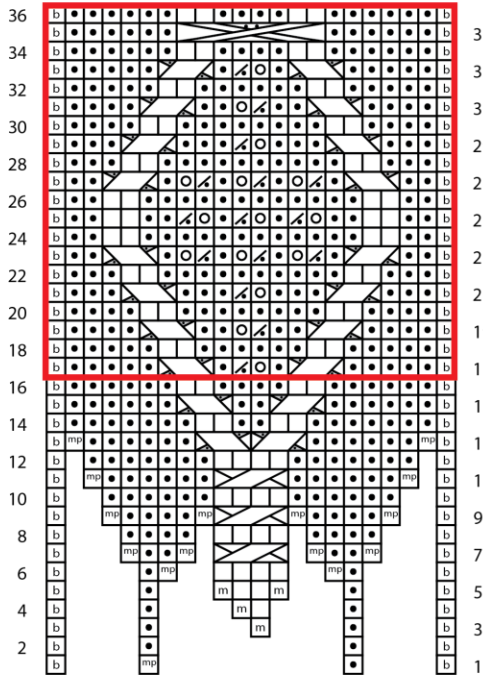
Left Lace

Right Lace

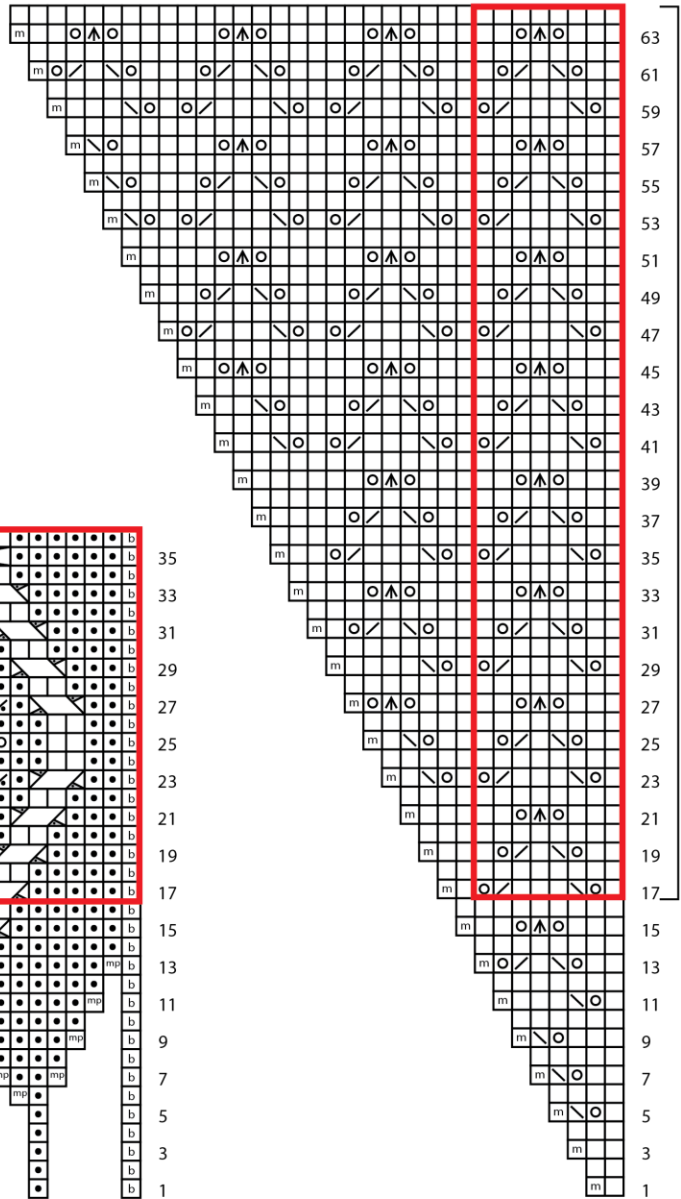
48 row
patt rep



Center Panel



48 row
patt rep



22 st panel

Knit. Relax. Smile. Repeat!

2020 © Universal Yarn, Inc.

All rights reserved.

www.universalyarn.com

This pattern may not be reproduced for business, trade or sale.