



PATTERN COLLECTION

Accessories



Hope Hat

Designed by Rachel Brockman

DIFFICULTY

Easy

SIZES

Adult Small (Medium, Large)

Shown in Adult Small size.

FINISHED MEASUREMENTS

Brim Circumference: 17½ (20½, 23½)"

Stretches to approx. 19½ (22½, 25½)"

Height: 8 (8, 8¾)"

MATERIALS

Universal Yarn *Cotton Supreme* (100% cotton; 100g/180 yds)

- 628 Super Pink (A) – 1 skein
- 510 Magenta (B) – 1 skein
- 512 Hot Pink (C) – 1 skein

Needles: US Size 8 (5 mm) 16" circular and set of DPNs (or your preferred needle for knitting small circumferences) *or size needed to obtain gauge*

US Size 6 (4 mm) 16" circular

Notions: Tapestry needle, stitch markers

GAUGE

22 sts x 24 rnds = 4" in stranded knitting with larger ndl

Save time, check your gauge.

Knit, Relax, Smile, Repeat!

2021 © Universal Yarn, Inc.

www.universalyarn.com

All rights reserved. This pattern may not be reproduced for business, trade or sale.

Questions? Contact patterns@universalyarn.com

PATTERN NOTES

October is Breast Cancer Awareness Month, and there are so many ways to show and give your support, one of which being to make something meaningful to wear! The Hope Hat is a stunning knit hat featuring a stranded colorwork ribbon and speckle motif in a medley of pink shades beautifully matched to the inspiration. Worsted weight Cotton Supreme is a perfect fit for the Hope Hat because it is easy to care for and buttery-soft, making it a great choice for gifts, because even those with ultra-sensitive scalps can wear this yarn with ease.

This hat is knit in the round from the bottom up. It features stranded colorwork throughout. Please note that in Rounds 10-25 there are occasions with large number of stitches between color changes. We recommend trapping your floats approx. every 5 stitches to avoid puckering in your work.

STITCH GUIDE

Half Twisted Rib

Rnd 1: * K1 tbl, p1; rep from * to end.

Rep Rnd 1 for patt.

PATTERN BEGINS

HAT

Brim

With color A, smaller ndl, and using the German Twisted Cast-on method, cast on 96 (112, 128) sts. PM and join to knit in the rnd, being careful not to twist.

Work in Half Twisted Rib for $1\frac{1}{4}$ ($1\frac{1}{4}$, $1\frac{1}{2}$)" from cast-on edge. Change to larger ndl.

Main Hat

Note 1: Join colors as indicated in Hat chart.

Note 2: Crown shaping begins on Rnd 29. Change to your preferred needle for knitting small circumferences when there are too few sts to fit comfortably on 16" circular.

Next Rnd: Knit.

Work Rnds 1-41 of Hat chart. Patt will be repeated 6 (7, 8) times across each rnd.

After all rnds have been completed, 90 (105, 120) total sts have been dec'd - 6 (7, 8) sts rem.

Break yarn leaving approx. 8" tail. Thread tail through rem live sts twice, then pull taut to close.



FINISHING

Gently wash and block to finished measurements. Weave in ends.

Abbreviations

circ	circular
dec('d)	decrease(d)
dpn(s)	double pointed needle(s)
k	knit
k2tog	knit 2 stitches together (1 st dec'd)
k3tog	knit 3 stitches together (2 sts dec'd)
pm	place marker
rem	remain(ing)
rep	repeat
rnd	round
st(s)	stitch(es)

Knit, Relax, Smile, Repeat!

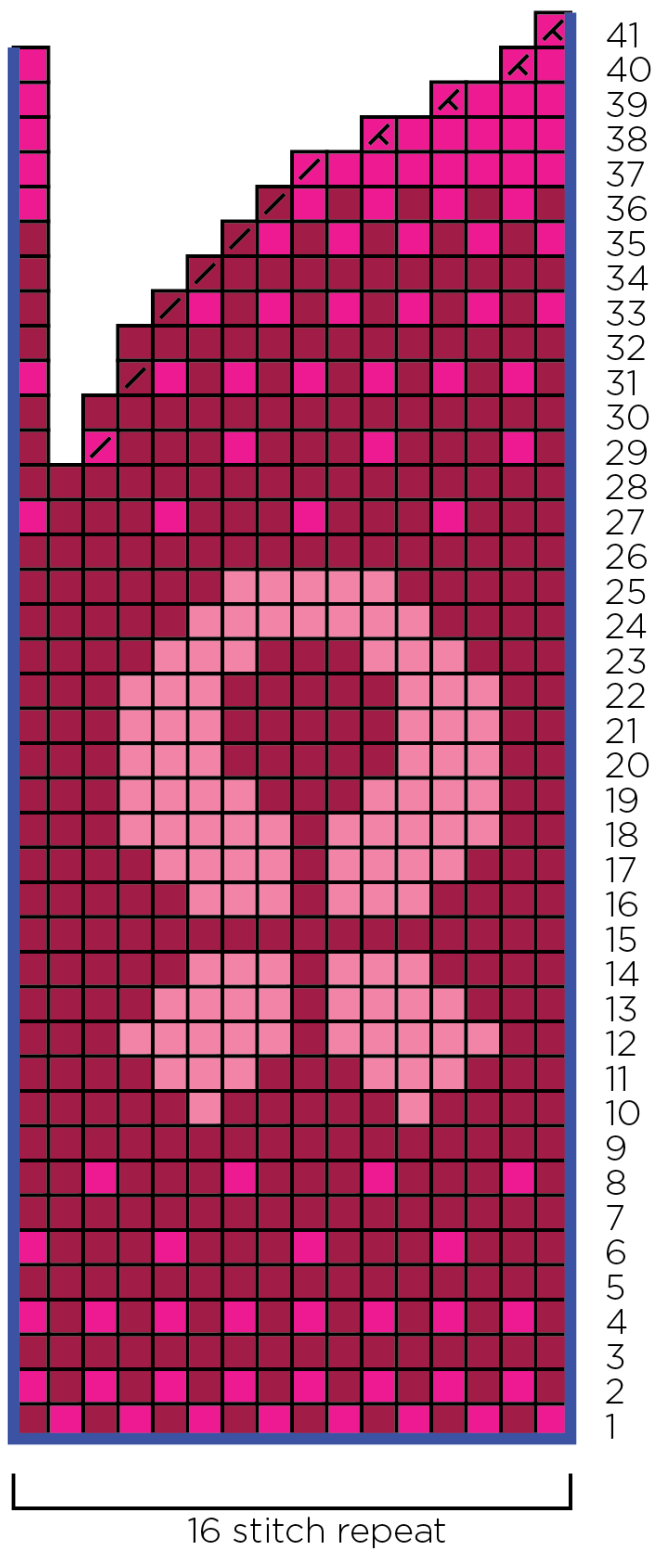
2021 © Universal Yarn, Inc.

www.universalyarn.com

All rights reserved. This pattern may not be reproduced for business, trade or sale.

Questions? Contact patterns@universalyarn.com

Hat



Key

- pattern repeat
- with A, knit
- with B, knit
- with B, k2tog
- with C, knit
- with A, k2tog
- with A, k3tog

Knit, Relax, Smile, Repeat!

2021 © Universal Yarn, Inc.

www.universalyarn.com

All rights reserved. This pattern may not be reproduced for business, trade or sale.

Questions? Contact patterns@universalyarn.com