



PATTERN COLLECTION

Accessories



Honeysuckle Mitts

Designed by Rachel Brockman

DIFFICULTY

Intermediate

SIZES

Adult Medium

FINISHED MEASUREMENTS

Hand Circumference: 7½"

Length: 7¼"

MATERIALS

[Universal Yarn Zesty Sock](#) (75% superwash merino wool, 25% polyamide; 100g/437 yds)

- 102 Sunset - 1 skein

Needle: US Size 3 (3.25 mm) set of DPNs (or your preferred needle for knitting small circumferences) or size needed to obtain gauge

Notions: Tapestry needle, stitch markers (we recommend a unique marker for the bor), cable needle (cn), stitch holders or waste yarn

GAUGE

26 sts x 34 rnds = 4" in Stockinette stitch (St st)

Save time, check your gauge.

Knit, Relax, Smile, Repeat!

2022 © Universal Yarn, Inc.

www.universalyarn.com

All rights reserved. This pattern may not be reproduced for business, trade or sale.

Questions? Contact patterns@universalyarn.com

PATTERN NOTES

The Honeysuckle Mitts are soft, lightweight fingerless gloves to keep you cozy on any chilly day. A touch of texture and botanically inspired cable motif decorate each mitt. Brilliant pops of color add even more pizzazz, all thanks to the soft, sumptuous Zesty Sock yarn they're made from.

These mitts are knit seamlessly in the round from the bottom up (cuff up). The right and left mitts mirror one another. These mitts feature a palm gusset. After the palm gusset shaping is complete, stitches for the Thumb are slipped to a holder. Then, each the Hand and Thumb are worked in the round separately. In this pattern, work all slipped stitches purlwise unless otherwise indicated.

STITCH GUIDE

SKP: Sl 1 kwise, k1, pss0; single left-leaning decrease

2x1 Left Yarnover Cross (LYOC): Slip 2 sts to cn and hold in front, k1 from left needle, yo, SKP from cn.

2x1 Right Yarnover Cross (RYOC): Slip 1 st to cn and hold in back, k2tog from left needle, yo, k1 from cn.

Cable Panel

(panel of 14 sts)

Rnd 1: K1 tbl, k1, p1, k8, p1, k1, k1 tbl.

Rnd 2: K1 tbl, p1, k1, p1, k6, p1, k1, p1, k1 tbl.

Rnd 3: K1 tbl, k1, p1, k1, [sl 1 pwise wyib] 2 times, k2, [sl 1 pwise wyib] 2 times, k1, p1, k1, k1 tbl.

Rnd 4: K1 tbl, p1, k1, p1, [sl 1 pwise wyib] 2 times, k2, [sl 1 pwise wyib] 2 times, p1, k1, p1, k1 tbl.

Rnd 5: K1 tbl, k1, p1, k1, 2x1 LYOC, 2x1 RYOC, k1, p1, k1, k1 tbl.

Rnd 6: K1 tbl, p1, k1, p1, k6, p1, k1, p1, k1 tbl.

Rep Rnds 1-6 for patt.

PATTERN BEGINS

RIGHT MITT

Cuff

Cast on 48 sts. PM and join to knit in the rnd, being careful not to twist.

Set-up Rnd: [P1, k1] 8 times, p1, pm, work Rnd 6 of Cable Panel over 14 sts, pm, p1, k1, p1, pm, work Rnd 6 of Cable Panel over 14 sts to end.

Rnd 1: * P1, k1; rep from * to 1 st bef m, p1, sl m, work Rnd 1 of Cable Panel to m, sl m, p1, k1, p1, sl m, work Rnd 1 of Cable Panel to end.

Rnd 2: * P1, k1; rep from * to 1 st bef m, p1, sl m, work Rnd 2 of Cable Panel to m, sl m, p1, k1, p1, sl m, work Rnd 1 of Cable Panel to end.

Cont in patt as est'd through Rnd 6 of Cable Panel, then rep Rnds 1-6 of patt, 2 more times. Piece meas approx. 2¼" from cast-on edge.

Palm Gusset

Note: Use chart on the last page for reference if desired.

Rnd 1: K17, sl m, work Rnd 1 of Cable Panel to m, sl m, knit to m, sl m, work Rnd 1 of Cable Panel to end.

Rnd 2: Knit to m, sl m, work Rnd 2 of Cable Panel to m, sl m, knit to m, sl m, work Rnd 2 of Cable Panel to end.

Rnd 3 (Inc Rnd): Knit to m, m1, sl m, work next rnd of Cable Panel to m, sl m, m1, knit to m, sl m, work next rnd of Cable Panel to end – 2 sts inc'd, 50 sts.

Rnd 4: Knit to m, sl m, work next rnd of Cable Panel to m, sl m, knit to m, sl m, work next rnd of Cable Panel to end.

Maintaining patt as est'd, work an Inc Rnd every 2 rnds, 6 more times – 12 sts inc'd, 62 sts.

Separate Thumb & Hand

Next Rnd: Knit to m, remove m, slip next 14 Thumb sts on holder or waste yarn, remove m, cast on 2 sts, knit to m, sl m, work next rnd of Cable Panel to end – 50 sts.

Hand

Next Rnd: Knit to m, work next rnd of Cable Panel to end.

Cont even in patt as est'd until piece meas approx. 6¼" from cast-on edge.

Next Rnd: [P1, k1] 18 times, sl m, work next rnd of Cable Panel to end.

Cont in patt as est'd until piece meas approx. 7¼" from cast-on edge, ending with Rnd 2 or 6 of Cable Panel patt. Bind off all sts in patt.

Thumb

Return 14 held Thumb sts to ndl.

Rnd 1: Work next rnd of Cable Panel over 14 sts, pick up and knit 2 sts along cast-on edge, pm to denote bor – 16 sts.

Rnd 2: Work next rnd of Cable Panel over 14 sts, k2.

Rep Rnd 2 until Thumb meas approx. 1½" from picked-up edge. Bind off all sts in patt.

Knit, Relax, Smile, Repeat!

2022 © Universal Yarn, Inc.

www.universalyarn.com

All rights reserved. This pattern may not be reproduced for business, trade or sale.

Questions? Contact patterns@universalyarn.com

LEFT MITT

Cast on 48 sts. PM and join to knit in the rnd, being careful not to twist.

Set-up Rnd: Work Rnd 6 of Cable Panel over 14 sts, pm, p1, k1, p1, pm, work Rnd 6 of Cable Panel over 14 sts, pm, [p1, k1] 8 times, p1.

Rnd 1: Work Rnd 1 of Cable Panel to m, sl m, p1, k1, p1, sl m, work Rnd 1 of Cable Panel to m, sl m, * p1, k1; rep from * to last st, p1.

Rnd 2: Work Rnd 2 of Cable Panel to m, sl m, p1, k1, p1, sl m, work Rnd 1 of Cable Panel to m, sl m, * p1, k1; rep from * to last st, p1.

Cont in patt as est'd through Rnd 6 of Cable Panel, then rep Rnds 1-6 of patt, 2 more times. Piece meas approx. 2¼" from cast-on edge.

Palm Gusset

Rnd 1: Work Rnd 1 of Cable Panel to m, sl m, knit to m, sl m, work Rnd 1 of Cable Panel to m, sl m, knit to end.

Rnd 2: Work Rnd 2 of Cable Panel to m, sl m, knit to m, sl m, work Rnd 2 of Cable Panel to m, sl m, knit to end.

Rnd 3 (Inc Rnd): Work next rnd of Cable Panel to m, sl m, knit to m, m1, sl m, work next rnd of Cable Panel to m, sl m, m1, knit to end - 2 sts inc'd, 50 sts.

Rnd 4: Work next rnd of Cable Panel to m, sl m, knit to m, sl m, work next rnd of Cable Panel to m, sl m, knit to end.

Maintaining patt as est'd, work an Inc Rnd every 2 rnds, 6 more times - 12 sts inc'd, 62 sts.

Separate Thumb & Hand

Next Rnd: Work next rnd of Cable Panel to m, sl m, knit to m, remove m, slip next 14 Thumb sts to holder or waste yarn, remove m, cast on 2 sts, knit to end - 50 sts.

Hand

Next Rnd: Work next rnd of Cable Panel to m, knit to end.

Cont even in patt as est'd until piece meas approx. 6¼" from cast-on edge.

Next Rnd: Work next rnd of Cable Panel to m, sl m, * p1, k1; rep from * to end.

Cont in patt as est'd until piece meas approx. 7¼" from cast-on edge, ending with Rnd 2 or 6 of Cable Panel patt. Bind off all sts in patt.

Thumb

Return 14 held Thumb sts to ndl.

Rnd 1: Work next rnd of Cable Panel over 14 sts, pick up and knit 2 sts along cast-on edge, pm to denote bor - 16 sts.

Rnd 2: Work next rnd of Cable Panel over 14 sts, k2.

Rep Rnd 2 until Thumb meas approx. 1½" from picked-up edge. Bind off all sts in patt.

FINISHING

Gently wash and block to finished measurements. Weave in ends.

Abbreviations

approx	approximately
bef	before
bor	beginning of round
cn	cable needle
cont	continue
dpn(s)	double pointed needle(s)
est'd	established
inc('d)	increase(d)
k	knit
k2tog	knit 2 stitches together (1 st dec'd)
m	marker
m1	insert left needle from front to back under horizontal strand of yarn lying between st just worked and next st, knit or purl this st through the back loop (1 st inc'd)
meas	measures
ndl	needle
p	purl
patt	pattern
pm	place marker
psso	pass slipped stitch(es) over
pwis	purlwise
rem	remain(ing)
rep	repeat
rnd	round
sl	slip
St st	Stockinette stitch (knit on RS rows, purl on WS rows; in the rnd, knit every rnd)
st(s)	stitch(es)
tbl	through the back loop(s)
wyib	with yarn held in back
yo	yarnover

Knit, Relax, Smile, Repeat!

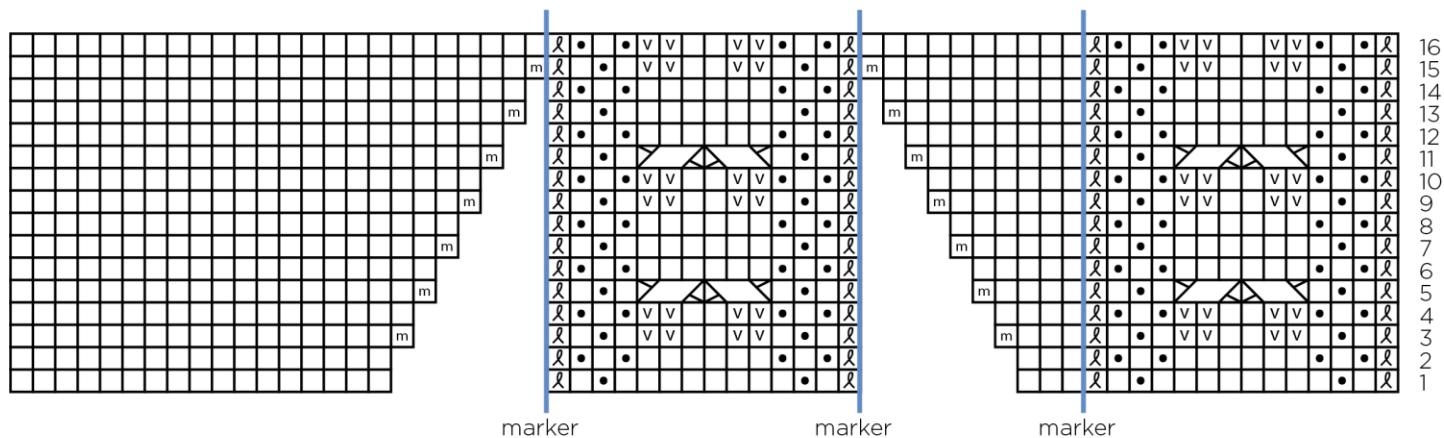
2022 © Universal Yarn, Inc.

www.universalyarn.com

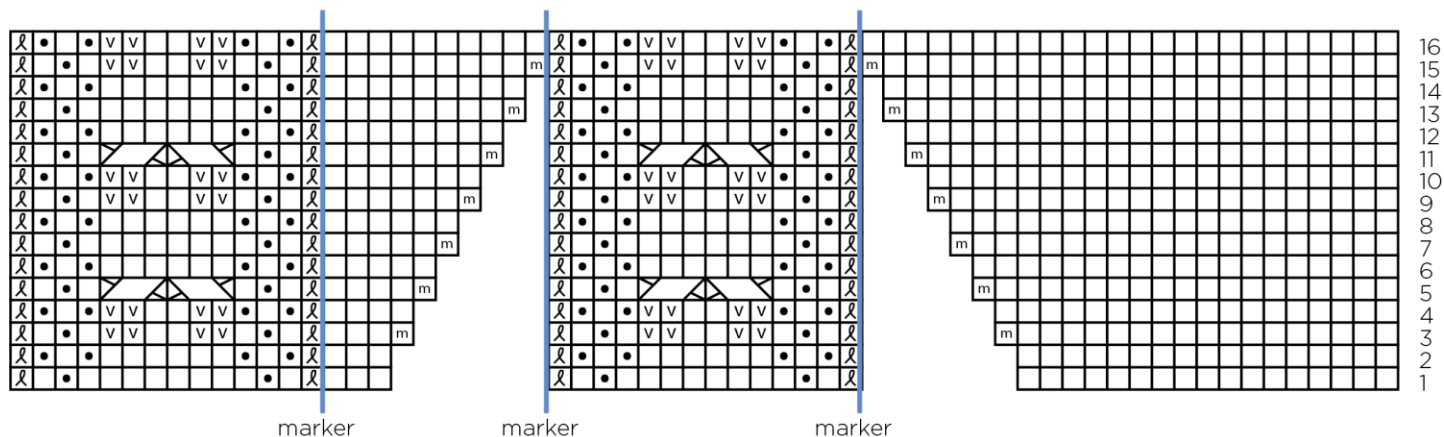
All rights reserved. This pattern may not be reproduced for business, trade or sale.

Questions? Contact patterns@universalyarn.com

Left Mitt



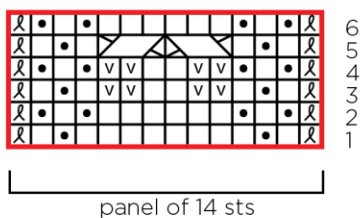
Right Mitt



Key

- pattern repeat
- knit
- purl
- ℓ k1 tbl
- v sl 1 wyib
- m m1
- / \ 2x1 LYOC
- \ / 2x1 RYOC

Cable Panel



Knit, Relax, Smile, Repeat!

2022 © Universal Yarn, Inc.

www.universalyarn.com

All rights reserved. This pattern may not be reproduced for business, trade or sale.

Questions? Contact patterns@universalyarn.com