



## PATTERN COLLECTION

### Accessories



#### High Line Shawl

Designed by Rachel Brockman

#### SKILL

Knitting

#### DIFFICULTY

Intermediate

#### SIZES

Small (Large)

#### FINISHED MEASUREMENTS

Width (at widest edge): 45½ (63½)"

Length: 44¾ (62¾)"

#### MATERIALS

[Universal Yarn Uni Merino Neons](#) (75% superwash merino wool, 25% nylon; 100g/437 yds)

Small Version:

- 153 Neon Orange (A) - 1 skein

Large Version:

- 155 Neon Green (A) - 2 skeins

[Rico Design Super Kid Mohair Loves Silk](#) (70% mohair, 30% silk; 25g/218 yds)

Small Version:

- 048 Azalea (B) - 2 balls

Large Version:

- 050 Green (B) - 4 balls

**Needles:** US Size 7 (4.5 mm) 32" circular or longer (to accommodate large number of sts)

**Notions:** Tapestry needle, stitch markers

#### GAUGE

16 sts x 22 rows = 4" in Lace patt *after blocking*

Save time, check your gauge.

Knit, Relax, Smile, Repeat!

2023 © Universal Yarn, Inc.

[www.universalyarn.com](http://www.universalyarn.com)

All rights reserved. This pattern may not be reproduced for business, trade or sale.

Questions? Contact [patterns@universalyarn.com](mailto:patterns@universalyarn.com)

## PATTERN NOTES

City lights and New York's High Line public park serve as the inspiration for this bright shawl with intriguing diagonal lines traveling across the fabric. Our Uni Merino Neons is paired with Rico's Super Kid Mohair Loves Silk to create a lightweight fabric that is warm and insulating with an ethereal halo. This shawl is perfect for bundling up on chilly days and adding a touch of bold color for dreary winter days.

This asymmetrical shawl is knit flat, beginning at the tip and increasing to the opposite edge. On one edge of the shawl, increases are worked every right side row, and on the opposite edge, increases are worked every fourth right side row. The Lace pattern is rhythmic but engaging, with lace worked on both the right side and wrong side of the work.

One strand each of yarns A and B are held together throughout this project.

## STITCH GUIDE

### Lace

(multiple of 8 sts)

**Row 1 (RS):** \* Yo, ssk, k1, k2tog, yo, k3; rep from \* to end.

**Row 2 (WS):** \* P5, ssp, yo, p1; rep from \* to end.

**Row 3:** \* K2, yo, ssk, k1, k2tog, yo, k1; rep from \* to end.

**Row 4:** \* P3, ssp, yo, p3, ssp, yo, p3; rep from \* to end.

**Row 5:** \* K2tog, yo, k3, yo, ssk, k1; rep from \* to end.

**Row 6:** \* P1, ssp, yo, p5; rep from \* to end.

**Row 7:** \* K1, k2tog, yo, k3, yo, ssk; rep from \* to end.

**Row 8:** \* Ssp, yo, p6; rep from \* to end.

Rep Rows 1-8 for patt.

## PATTERN BEGINS

### SHAWL

#### Starting Tip

Cast on 2 sts holding yarns A and B together as one strand.

**Row 1 (RS):** [Kfb] 2 times - 2 sts inc'd, 4 sts.

**Row 2 (WS):** Knit.

**Row 3:** K1, [kfb] 2 times, k1 - 2 sts inc'd, 6 sts.

**Row 4:** K2, pm, p2, pm, k2.

#### Main Shawl

*Note: This section is also charted for your convenience.*

**Row 1 (RS):** K2, sl m, yo, k2, yo, sl m, k2 - 2 sts inc'd, 8 sts.



**Row 2 (WS):** K2, sl m, purl to m, sl m, k2.

**Row 3:** K2, sl m, yo, knit to m, sl m, k2 - 1 st inc'd, 9 sts.

**Row 4:** Rep Row 2.

**Row 5:** K2, sl m, yo, k2, k2tog, yo, k1, yo, sl m, k2 - 2 sts inc'd, 11 sts.

**Row 6:** K2, sl m, p4, ssp, yo, p1, sl m, k2.

**Row 7:** K2, sl m, yo, k2, yo, ssk, k3, sl m, k2 - 1 st inc'd, 12 sts.

**Row 8:** K2, sl m, p2, ssp, yo, p4, sl m, k2.

**Row 9:** K2, sl m, yo, k2tog, yo, k3, yo, ssk, k1, yo, sl m, k2 - 2 sts inc'd, 14 sts.

**Row 10:** K2, sl m, p1, ssp, yo, p7, sl m, k2.

**Row 11:** K2, sl m, yo, k1, work Row 1 of Lace patt to 1 st bef m, k1, sl m, k2 - 1 st inc'd, 15 sts.

**Row 12:** K2, sl m, p1, work Row 2 of Lace patt to 2 sts bef m, p2, sl m, k2.

**Row 13:** K2, sl m, yo, k2, work Row 3 of Lace patt to 1 st bef m, k1, yo, sl m, k2 - 2 sts inc'd, 17 sts.

**Row 14:** K2, sl m, p2, work Row 4 of Lace patt to 3 sts bef m, p3, sl m, k2.

**Row 15:** K2, sl m, yo, k2, work Row 5 of Lace patt to 3 sts bef m, k2tog, yo, k1, sl m, k2 - 1 st inc'd, 18 sts.

**Row 16:** K2, sl m, p2, work Row 6 of Lace patt to 4 sts bef m, p1, ssp, yo, p1, sl m, k2.

Knit, Relax, Smile, Repeat!

2023 © Universal Yarn, Inc.

[www.universalyarn.com](http://www.universalyarn.com)

All rights reserved. This pattern may not be reproduced for business, trade or sale.

Questions? Contact [patterns@universalyarn.com](mailto:patterns@universalyarn.com)

**Row 17:** K2, sl m, yo, k2, yo, ssk, work Row 7 of Lace patt to 2 sts bef m, k2, yo, sl m, k2 – 2 sts inc'd, 20 sts.

**Row 18:** K2, sl m, p2, work Row 8 of Lace patt to 6 sts bef m, ssp, yo, p4, sl m, k2.

**Row 19:** K2, sl m, yo, k2tog, yo, k3, work Row 1 of Lace patt to 3 sts bef m, yo, ssk, k1, sl m, k2 – 1 st inc'd, 21 sts.

**Row 20:** K2, sl m, ssp, yo, p1, work Row 2 of Lace patt to 6 sts bef m, p6, sl m, k2.

**Row 21:** K2, sl m, yo, k3, k2tog, yo, k1, Row 3 of work Lace patt to 3 sts bef m, k3, yo, sl m, k2 – 2 sts inc'd, 23 sts.

**Row 22:** K2, sl m, p4, work Row 4 of Lace patt to 7 sts bef m, p3, ssp, yo, p2, sl m, k2.

**Row 23:** K2, sl m, yo, k3, yo, ssk, k1, work Row 5 of Lace patt to 5 sts bef m, k2tog, yo, k3, sl m, k2 – 1 st inc'd, 24 sts.

**Row 24:** K2, sl m, p4, work Row 6 of Lace patt to 8 sts bef m, p1, ssp, yo, p5, sl m, k2.

**Row 25:** K2, yo, k1, k2tog, yo, k3, yo, ssk, work Row 7 of Lace patt to 4 sts bef m, k1, k2tog, yo, k1, yo, sl m, k2 – 2 sts inc'd, 26 sts.

**Row 26:** K2, sl m, p4, work Row 8 of Lace patt to 10 sts bef m, ssp, yo, p8, sl m, k2.

**Row 27:** K2, sl m, yo, k1, work Row 1 of Lace patt to 5 sts bef m, yo, ssk, k3, sl m, k2 – 1 st inc'd, 27 sts.

**Row 28:** K2, sl m, p2, ssp, yo, p1, work Row 2 of Lace patt to 2 sts bef m, p2, sl m, k2.

**Row 29:** K2, sl m, yo, k2, work Row 3 of Lace patt to 5 sts bef m, k2, yo, ssk, k1, yo, sl m, k2 – 2 sts inc'd, 29 sts.

**Row 30:** K2, sl m, p1, ssp, yo, p3, work Row 4 of Lace patt to 3 sts bef m, p3, sl m, k2.

**Row 31:** K2, sl m, yo, k2, work Row 5 of Lace patt to 7 sts bef m, k2tog, yo, k3, yo, ssk, sl m, k2 – 1 st inc'd, 30 sts.

**Row 32:** K2, sl m, p6, sl m, work Row 6 of Lace patt to 4 sts bef m, p1, ssp, yo, p1, sl m, k2.

**Row 33:** K2, sl m, yo, k2, yo, ssk, work Row 7 of Lace patt to 6 sts bef m, k1, k2tog, yo, k3, yo, sl m, k2 – 2 sts inc'd, 32 sts.

**Row 34:** K2, sl m, p6, work Row 8 of Lace patt to 6 sts bef m, ssp, yo, p4, sl m, k2.

**Row 35:** K2, sl m, yo, k2tog, yo, k3, work Row 1 of Lace patt to 7 sts bef m, yo, ssk, k1, k2tog, yo, k2, sl m, k2 – 1 st inc'd, 33 sts.

**Row 36:** K2, sl m, p4, ssp, yo, p1, work Row 2 of Lace patt to 6 sts bef m, p6, sl m, k2.

**Row 37:** K2, sl m, yo, k3, k2tog, yo, k1, work Row 3 of Lace patt to 7 sts bef m, k2, yo, ssk, k3, yo, sl m, k2 – 2 sts inc'd, 35 sts.

**Row 38:** K2, sl m, p3, ssp, yo, p3, work Row 4 of Lace patt to 7 sts bef m, p3, ssp, yo, p2, sl m, k2.

**Row 39:** K2, sl m, yo, k3, yo, ssk, k1, work Row 5 of Lace patt to 9 sts bef m, k2tog, yo, k3, yo, ssk, k2, sl m, k2 – 1 st inc'd, 36 sts.

**Row 40:** K2, sl m, p1, ssp, yo, p5, work Row 6 of Lace patt to 8 sts bef m, p1, ssp, yo, p5, sl m, k2.

**Row 41:** K2, sl m, yo, k1, k2tog, yo, k3, yo, ssk, work Row 7 of Lace patt to 9 sts bef m, k1, k2tog, yo, k3, yo, ssk, yo, sl m, k2 – 2 sts inc'd, 38 sts.

**Row 42:** K2, sl m, p8, work Row 8 of Lace patt to 10 sts bef m, ssp, yo, p8, sl m, k2.

Rep Rows 11-42, 6 (9) more times – 144 (216) sts inc'd, 182 (254) sts.

#### Edge

**Row 1 (RS):** Knit.

**Row 2 (WS):** Knit.

Rep Rows 1-2, one more time. Loosely bind off all sts.

#### FINISHING

Weave in ends but do not trim. Wet or steam block, stretching to enhance lace. Once piece is fully dry, trim ends close to work.

#### Abbreviations

*	indicates a repeat section
bef	before
inc('d)	increase(d)
k	knit
k2tog	knit 2 stitches together (1 st dec'd)
kfb	knit into front and back of next st (1 st inc'd)
m	marker
p	purl
patt	pattern
pm	place marker
rep	repeat
RS	right side
sl	slip
ssk	slip next 2 sts individually knitwise, slip them back to left needle in this position, knit them together through the back loops (1 st dec'd)
ssp	slip next 2 sts individually knitwise, slip them back to left needle in this position, purl them together through the back loops (1 st dec'd)
st(s)	stitch(es)
WS	wrong side
yo	yarn over

Knit, Relax, Smile, Repeat!

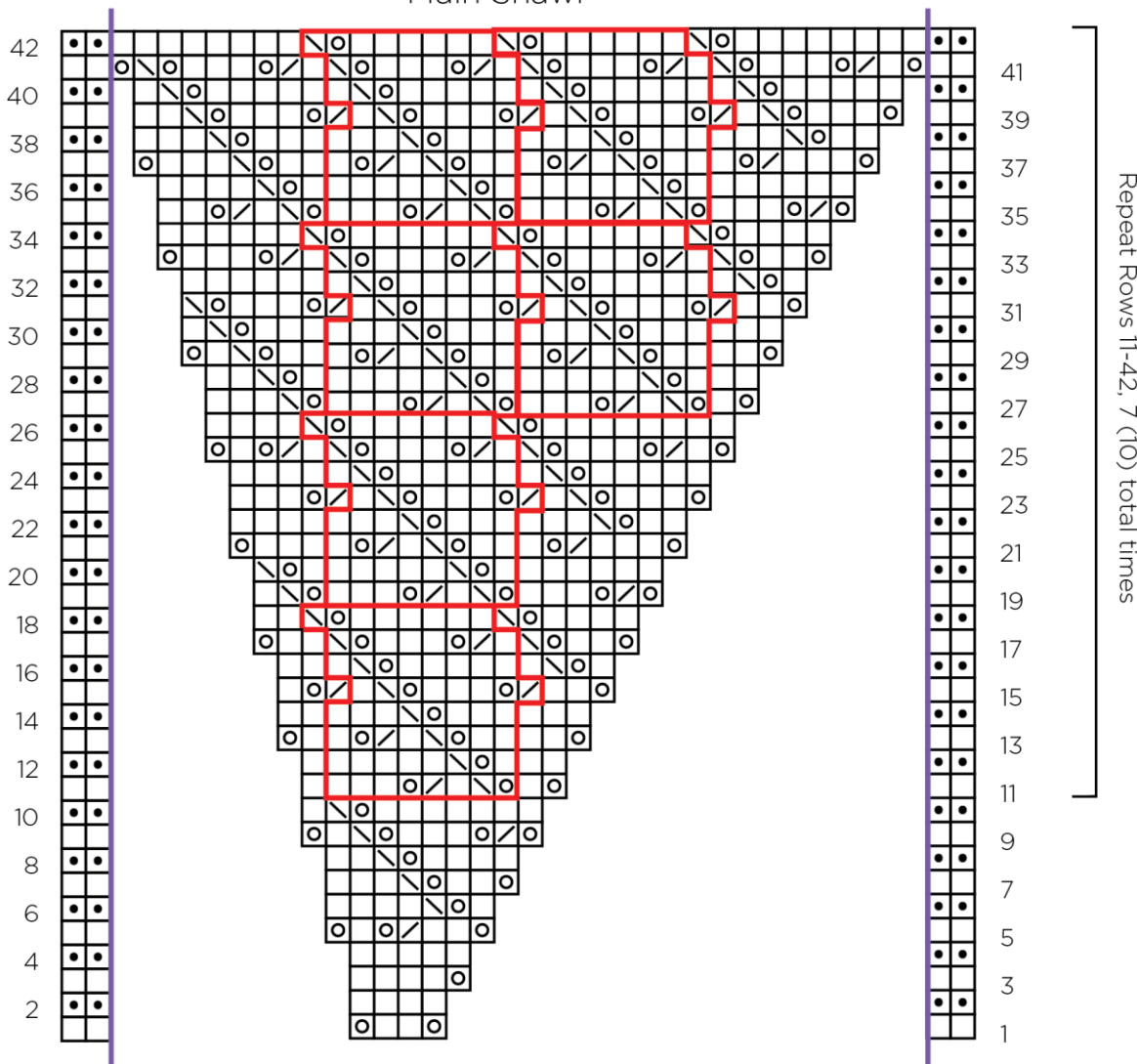
2023 © Universal Yarn, Inc.

[www.universalyarn.com](http://www.universalyarn.com)

All rights reserved. This pattern may not be reproduced for business, trade or sale.

Questions? Contact [patterns@universalyarn.com](mailto:patterns@universalyarn.com)

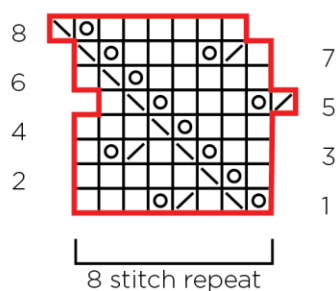
## Main Shawl



### Key

- indicates marker
- pattern repeat
- knit on RS, purl on WS
- purl on RS, knit on WS
- yo
- ssk on RS, ssp on WS
- k2tog

### Lace



Knit, Relax, Smile, Repeat!

2023 © Universal Yarn, Inc.

[www.universalyarn.com](http://www.universalyarn.com)

All rights reserved. This pattern may not be reproduced for business, trade or sale.

Questions? Contact [patterns@universalyarn.com](mailto:patterns@universalyarn.com)