



Pattern Collection: Children



Heartsbloom Hat and Mittens

Designed by Universal Yarn Design Team

SIZES

Toddler (Child Small, Child Medium, Child Large)

FINISHED MEASUREMENTS

Hat

Brim circumference: 16 (17¼, 18½, 20)"

Note: Pattern is very stretchy.

Length: 7 (7½, 8, 8½)"

Mittens

Hand circumference: 5¾ (6¼, 6¾, 7¼)"

Length (including cuff): 7 (8, 8 ¼, 9)"

MATERIALS

Universal Yarn *Bella Cash* (60% fine merino, 30% nylon, 10% cashmere; 50g/230 yds)

- 102 Blush –2 (2,3, 3) balls

Needles: US Size 2 (2.75 mm) set dpns (16" circular for Child Small, Medium, & Large hat) *or size needed to obtain gauge*
US Size 1 (2.25 mm) set dpns

Notions: Tapestry needle, stitch holder or waste yarn, stitch markers, cable needle (cn)

GAUGE

25 sts x 36 rows = 4" in Seed Stitch using larger ndl

28 sts x 38 rows = 4" in Seed Stitch using smaller ndl

Save time, check your gauge.

Knit. Relax. Smile. Repeat.

2018 © Universal Yarn, Inc.

All rights reserved.

www.universalyarn.com

This pattern may not be reproduced for business, trade or sale.

PATTERN NOTES

This adorable hat and mitten set for children is all about texture. Both the hat and mittens are knit in the round from the bottom up, beginning with a ribbed cuff. The all-over seed stitch pattern is broken by a panel of beautiful cables.

STITCH GUIDE

3x3 Left Cross (LC)

Sl next 3 sts to cn and hold in front, k3 from left ndl, k3 from cn.

3x3 Right Cross (RC)

Sl next 3 sts to cn and hold in back, k3 from left ndl, k3 from cn.

K1, P1 Ribbing

(even number of sts)

Rnd 1: * K1, p1; rep from * to end.

Rep Row 1 for patt.

Seed Stitch

(even number of sts)

Rnd 1: * K1, p1; rep from * to end.

Rnd 2: * P1, k1; rep from * to end.

Rep Rnds 1-2 for patt.

HAT

Brim

With larger ndls, cast on 100 (108, 116, 124) sts. Pm to and join to knit in the rnd, being careful not to twist sts. Work in K1, P1 Rib until piece meas 1½ (1¾, 1¾, 1¾)".

Hat Body

Set-up Rnd: K28, pm, work in Seed Stitch patt across 72 (80, 88, 96) sts.

Rnd 1: Work Chevron Panel across 28 sts, sl m, work in Seed Stitch patt as est'd to end.

Rep Rnd 1 until piece meas 5¼ (5¾, 6¼, 6¾)" from cast-on edge.

Shape Crown

Note: Maintain Chevron Panel throughout Crown shaping, decreases occur outside of the cable panel. Maintain Seed Stitch patt as est'd. On Rnd 14, remove the marker that indicates the end of the Chevron Panel. Change to dpns when there

are not enough sts to fit comfortably on a 16" circ.

Rnd 1: Work Chevron Panel to m, sl m, * work in Seed St over 6 sts, k2tog; rep from * to end – 9 (10, 11, 12) sts dec'd, 91 (98, 105, 112) sts rem.

Even Rnds 2-12: Cont as est'd to end.

Rnd 3: Work Chevron Panel to m, sl m, * work in Seed St over 5 sts, k2tog; rep from * to end – 9 (10, 11, 12) sts dec'd, 82 (88, 94, 100) sts rem.

Rnd 5: Work Chevron Panel to m, sl m, * work in Seed St over 4 sts, k2tog; rep from * to end – 9 (10, 11, 12) sts dec'd, 73 (78, 83, 88) sts rem.

Rnd 7: Work Chevron Panel to m, sl m, * work in Seed St over 3 sts, k2tog; rep from * to end – 9 (10, 11, 12) sts dec'd, 64 (68, 72, 76) sts rem.

Rnd 9: Work Chevron Panel to m, sl m, * work in Seed St over 2 sts, k2tog; rep from * to end – 9 (10, 11, 12) sts dec'd, 55 (58, 61, 64) sts rem.

Rnd 11: Work Chevron Panel to m, sl m, * k1, k2tog; rep from * to end – 9 (10, 11, 12) sts dec'd, 46 (48, 50, 52) sts rem.

Rnd 13: Work Chevron Panel to m, sl m, * k2tog; rep from * to end – 9 (10, 11, 12) sts dec'd, 37 (38, 39, 40) sts rem.

Remove m.

Toddler Size Only:

Rnd 14: K3tog, * k2tog; rep from * to end – 18 sts rem.

Rnd 15: * K2tog; rep from * to end – 9 sts rem.

Child Small Size Only:

Rnd 14: * K2tog; rep from * to end – 19 sts rem.

Rnd 15: K3tog, * k2tog; rep from * to end – 9 sts rem.

Child Medium Size Only:

Rnd 14: K3tog, * k2tog; rep from * to end – 19 sts rem.

Rnd 15: K3tog, * k2tog; rep from * to end – 9 sts rem.

Child Large Size Only

Rnd 14: * K2tog; rep from * to end – 20 sts rem.

Rnd 15: * K2tog; rep from * to end – 10 sts rem.

All Sizes: 9 (9, 9, 10) sts rem.

Break yarn leaving an 8" tail. Thread tail through rem sts and pull taut.

Knit. Relax. Smile. Repeat!

2018 © Universal Yarn, Inc.

All rights reserved.

www.universalyarn.com

This pattern may not be reproduced for business, trade or sale.

FINISHING

Block to finished measurements and weave in ends.

MITTENS

Left Mitten

Cuff

With smaller ndls, cast on 40 (44, 48, 52) sts. PM and join to knit in the rnd, being careful not to twist sts. Work in K1, P1 Rib until piece meas 1½ (1¾, 1¾, 2)'' from cast on edge.

Hand

Set-up Rnd: K1, pm, k2 (4, 6, 8), pm, k16, pm, knit to last st, pm, k1.

Rnd 1: Work in Seed St to m, sl m, cont in Seed St to m, sl m, work Left Mitten patt across 16 sts, sl m, work in Seed St to last st, sl m, cont in Seed st to end.

Rnd 2: Cont as est'd to end.

Inc Rnd: Cont as est'd to m, m1, sl m, cont as est'd to m, sl m, work in Left Mitten patt to m, sl m, cont as est'd to m, sl m, m1, cont as est'd to end – 2 sts inc'd, 42 (46, 50, 54) sts. Rep Inc Rnd every other rnd 4 (5, 6, 7) more times – 50 (56, 62, 68) sts.

Cont as est'd until piece meas 3½ (3¾, 4, 4¼)'' from cast-on edge.

Separate Thumb

Next Rnd: Cont as est'd to m, sl m, cont as est'd to m, sl m, work Left Mitten patt to m, sl m, cont as est'd to last 6 (7, 8, 9) sts of rnd, sl next 12 (14, 16, 18) sts to holder -- 38 (42, 46, 50) sts rem.

Next Rnd: Using the backwards loop method, cast on 1 st, pm for new BOR, cast on 1 st, cont in Seed St as est'd to m, sl m, work Left Mitten patt to m, cont in Seed St as est'd to end of rnd -- 40 (44, 48, 52) sts.

Tip

Note: Maintain sts in pattern as est'd throughout decrease rnds. Remove markers as you come to them.

Cont working as est'd until piece meas 4¼ (5, 5, 5½)'' from cast-on edge, or until approx 1½'' less than desired length.

Set up Rnd: Cont as est'd across 20 (22, 24, 26) sts, pm for Side, cont as est'd to end.

Rnd 1 * P2tog, work in patt to 2 sts bef m, p2tog, sl m; rep from * 1 more time – 4 sts dec'd, 36 (40, 44, 48) sts rem.

Rep Dec Rnd 7 (8, 8, 9) more times – 32 (36, 36, 40) sts dec'd, 8 (10, 10, 12) sts rem.

Cut yarn leaving approx 8'' tail, thread tail through rem 8 (8, 12, 12) live sts, pull taut to close.

Thumb

Return 12 (14, 16, 18) sts to ndl.

Rnd 1: Work in patt as est'd across 12 (14, 16, 18) sts, pick up and knit 2 sts along cast-on edge – 14 (16, 18, 20) sts.

Rnd 2: Work in patt as est'd to end.

Cont as est'd until Thumb meas 1½ (1¾, 2, 2¼)'' or desired length.

Next Rnd: * K2tog; rep from * to end – 7 (8, 9, 10) sts rem. Break yarn leaving a 6'' tail. Thread tail through rem live sts, pull taut to close.

Right Mitten

Cuff

With smaller ndls, cast on 40 (44, 48, 52) sts. PM and join to knit in the rnd, being careful not to twist sts. Work in K1, P1 Rib until piece meas 1½ (1¾, 1¾, 2)'' from cast on edge.

Hand

Set-up Rnd: K1, pm, k20 (22, 24, 26), pm, k16, pm, k2 (4, 6, 8), pm, k1.

Rnd 1: [Work in Seed St to m, sl m] 2 times, work Right Mitten patt to m, [sl m, work in Seed st to m] 2 times

Rnd 2: Cont as est'd to end.

Inc Rnd: Cont as est'd to m, m1, sl m, work as est'd to m, sl m, work in Right Mitten patt to m, sl m, cont as est'd to m, sl m, m1, cont as est'd to end – 2 sts inc'd, 42 (46, 50, 54) sts. Rep Inc Rnd every other rnd 4 (5, 6, 7) more times – 50 (56, 62, 68) sts.

Cont as est'd until piece meas 3½ (3¾, 4, 4¼)'' from cast-on edge.

Separate Thumb

Next Rnd: Cont as est'd to last 6 (7, 8, 9) sts of rnd, sl next 12 (14, 16, 18) sts to holder, – 38 (42, 46, 50) sts rem.

Knit. Relax. Smile. Repeat!

2018 © Universal Yarn, Inc.

All rights reserved.

www.universalyarn.com

This pattern may not be reproduced for business, trade or sale.

Next Rnd: Using the backwards loop method, cast on 1 st, pm for new BOR, cast on 1 st, cont in est'd patt to end. Complete remainder as for Left Mitten.

Thumb

Work as for Left Thumb.

FINISHING

Block to finished measurements and weave in ends.

Abbreviations

approx	approximately
bef	before
bor	beginning of round
circ	circular
cn	cable needle
cont	continue
dec('d)	decrease(d)
dpn(s)	double pointed needle(s)
est'd	established
inc('d)	increase(d)
k	knit
k2tog	knit 2 stitches together (1 st
dec'd)	
k3tog	knit 3 stitches together (2 sts
dec'd)	
LC	left cross
m	marker
m1	insert left needle from front to
	back under horizontal strand of
	yarn lying between st just
	worked and next st, knit or purl
	this st through the back loop (1 st
	inc'd)
meas	measures
ndl	needle
p	purl
patt	pattern
pm	place marker
RC	right cross
rem	remain(ing)
rep	repeat
rnd	round
sl	slip

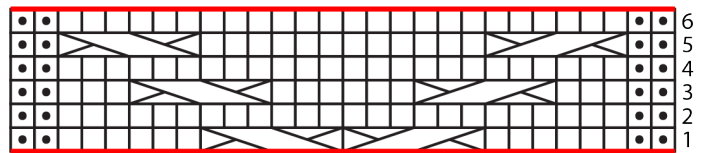
ssk

slip next 2 sts individually knitwise, slip them back to left needle in this position, knit them together through the back loops (1 st dec'd)

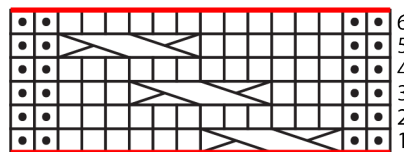
st(s)

stitch(es)

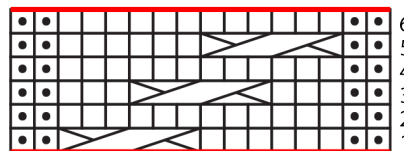
Chevron Panel



Left Mitten Pattern



Right Mitten Pattern



Key

- knit
- purl
- pattern repeat
- 3x3 LC
- 3x3 RC

Knit. Relax. Smile. Repeat!

2018 © Universal Yarn, Inc.

All rights reserved.

www.universalyarn.com

This pattern may not be reproduced for business, trade or sale.