



PATTERN COLLECTION

Women



Hazy Pullover

Designed by Rachel Brockman

DIFFICULTY

Intermediate

SIZES

Small (Medium, Large, 1X, 2X, 3X, 4X)

Shown with approx 3" of positive ease.

FINISHED MEASUREMENTS

Bust: 34 $\frac{1}{4}$ (38 $\frac{1}{2}$, 42 $\frac{1}{4}$, 46, 50 $\frac{1}{4}$, 54 $\frac{1}{2}$, 58 $\frac{1}{4}$)"

Length: 22 $\frac{1}{2}$ (24 $\frac{1}{2}$, 24 $\frac{1}{2}$, 26 $\frac{1}{4}$, 26 $\frac{1}{4}$, 28, 28)"

MATERIALS

[Universal Yarn Uptown Worsted](#) (100% anti-pilling acrylic; 100g/180 yds)

- 368 Midnight Heather: 5 (6, 7, 8, 8, 9, 10) skeins

Needles: US Size 8 (5 mm) straight (or your preferred needle for knitting flat) or size needed to obtain gauge

US Size 7 (4.5 mm) straight (or your preferred needle for knitting flat) and 16" circular

Notions: Tapestry needle, removable stitch markers, stitch markers, cable needle (cn)

GAUGE

17 sts x 28 rows = 4" in Reverse

Stockinette Stitch with larger ndl

24 sts x 29 rows = 4" in Cable Patt with larger ndl

Save time, check your gauge.

Knit, Relax, Smile, Repeat!

2022 © Universal Yarn, Inc.

www.universalyarn.com

All rights reserved. This pattern may not be reproduced for business, trade or sale.

Questions? Contact patterns@universalyarn.com

PATTERN NOTES

This cozy autumn pullover gets its name from the fascinating color provided by a heathered shade of soft, anti-pilling Uptown Worsted. The cables are crisp and clear, standing out like moonlit paths on a foggy night.

The sweater is knit flat in pieces and seamed. Stitches for the neckband are picked up and worked in the round. The stitch patterns are both written and charted for your convenience.

STITCH GUIDE

2x2 Left Cross (LC)

Sl next 2 sts to cn and hold in front, k2 from left ndl, k2 from cn.

2x2 Right Cross (RC)

Sl next 2 sts to cn and hold in back, k2 from left ndl, k2 from cn.

2x1 Left Purl Cross (LPC)

Sl next 2 sts to cn and hold in front, p1 from left ndl, k2 from cn.

2x1 Right Purl Cross (RPC)

Sl next st to cn and hold in back, k2 from left ndl, p1 from cn.

2x3 Right Purl Cross (RPC)

Sl next 2 sts to cn and hold in back, k3 from left ndl, p2 from cn.

2x3 Left Purl Cross (LPC)

Sl next 2 sts to cn and hold in front, p3 from left ndl, k2 from cn.

K3, P3 Rib

(Multiple of 6 sts, worked flat)

Row 1: * K3, p3; rep from * to end.

Rep Row 1 for patt.

K3, P3 Rib

(Multiple of 6 sts, worked in the round)

Rnd 1: * K3, p3; rep from * to end.

Rep Rnd 1 for patt.

Right Cable

(Panel of 4 sts)

Row 1 (RS): 2x2 RC.

WS Rows 2-4: Purl to end.

Row 3: Knit to end.

Rep Rows 1-4 for patt.

Left Cable

(Panel of 4 sts)

Row 1 (RS): 2x2 LC.

WS Rows 2-4: Purl to end.

Row 3: Knit to end.

Rep Rows 1-4 for patt.

Center Panel

(Panel of 22 sts)

Row 1 (RS): P8, 2x1 RPC, 2x1 LPC, p8.

Row 2 (WS): K8, p2, k1, p3, k8.

Row 3: P7, 2x1 RPC, p1, k1, 2x1 LPC, p7.

Row 4: K7, p2, [p1, k1] 2 times, p2, k7.

Row 5: P6, 2x1 RPC, [k1, p1] 2 times, 2x1 LPC, p6.

Row 6: K6, p2, [k1, p1] 3 times, p2, k6.

Row 7: P5, 2x1 RPC, [p1, k1] 3 times, 2x1 LPC, p5.

Row 8: K5, p2, [p1, k1] 4 times, p2, k5.

Row 9: P4, 2x1 RPC, [k1, p1] 4 times, 2x1 LPC, p4.

Row 10: K4, p2, [k1, p1] 5 times, p2, k4.

Row 11: P3, 2x1 RPC, [p1, k1] 5 times, 2x1 LPC, p3.

Row 12: K3, p2, [p1, k1] 6 times, p2, k3.

Row 13: P3, 2x1 LPC, [p1, k1] 5 times, 2x1 RPC, p3.

Row 14: K4, p2, [k1, p1] 5 times, p2, k4.

Row 15: P4, 2x1 LPC, [k1, p1] 4 times, 2x1 RPC, p4.

Row 16: K5, p2, [p1, k1] 4 times, p2, k5.

Row 17: P5, 2x1 LPC, [p1, k1] 3 times, 2x1 RPC, p5.

Row 18: K6, p2, [k1, p1] 3 times, p2, k6.

Row 19: P6, 2x1 LPC, [k1, p1] 2 times, 2x1 RPC, p6.

Row 20: K7, p2, [p1, k1] 2 times, p2, k7.

Row 21: P7, 2x1 LPC, p1, k1, 2x1 RPC, p7.

Row 22: K8, p2, k1, p3, k8.

Row 23: P8, 2x1 LPC, 2x1 RPC, p8.

Row 24: K9, p4, k9.

Row 25: P9, 2x2 LC, p9.

Row 26: K9, p4, k9.

Rep Rows 1-26 for patt.

PATTERN BEGINS

SWEATER

Back

With small ndl, cast on 76 (84, 92, 100, 110, 118, 126) sts.

Row 1 (RS): K1, p1 (2, 0, 1, 0, 1, 2), work in K3, P3 Rib to last 2 (3, 1, 2, 1, 2, 3) sts, k2 (3, 1, 2, 1, 2, 3).

Row 2 (WS): P2 (3, 1, 2, 1, 2, 3), work in K3, P3 Rib to last 2 (3, 1, 2, 1, 2, 3) sts, k1 (2, 0, 1, 0, 1, 2), p1.

Rep Rows 1-2 until piece meas 2½" from cast on edge, ending with a RS row. Change to larger ndl.

Knit, Relax, Smile, Repeat!

2022 © Universal Yarn, Inc.

www.universalyarn.com

All rights reserved. This pattern may not be reproduced for business, trade or sale.

Questions? Contact patterns@universalyarn.com

Back Body

Set up Row (WS): P1, knit to last st, p1.

Row 1 (RS): K1, purl to last st, k1.

Row 2: P1, knit to last st, p1.

Rep Rows 1-2 until Back meas 15¼ (16½, 16, 17½, 17, 18¼, 17¼)" from cast-on edge. Place removeable markers to denote Armholes. Cont as est'd until piece meas 6¼ (6¼, 7¼, 7¼, 8¼, 8¼, 9¼)" from Armhole markers, ending with a WS row.

Shape Back Neck

Row 1: Cont as est'd over 24 (28, 32, 36, 41, 45, 49) Left Back sts, join a new ball of yarn and bind off 28 Neck sts, cont as est'd over 24 (28, 32, 36, 41, 45, 49) Right Back sts.

Right Back

Dec Row (WS): P1, knit to last 3 sts, ssk, p1 - 1 st dec'd, 23 (27, 31, 35, 40, 44, 48) sts rem.

Dec Row (RS): K1, p2tog, purl to last st, k1 - 1 st dec'd, 22 (26, 30, 34, 39, 43, 47) sts rem.

Rep Dec Row every row 4 more times - 4 sts dec'd, 18 (22, 26, 30, 35, 39, 43) sts rem. Bind off all sts.

Left Back

Return Left Back sts to ndl.

Dec Row (WS): P1, ssk, knit to last st, p1 - 1 st dec'd, 23 (27, 31, 35, 40, 44, 48) sts rem.

Dec Row (RS): K1, purl to last 3 sts, p2tog, p1 - 1 st dec'd, 22 (26, 30, 34, 39, 43, 47) sts rem.

Rep Dec Row every row 4 more times - 4 sts dec'd, 18 (22, 26, 30, 35, 39, 43) sts rem. Bind off all sts.

Front

With smaller ndl, cast on 84 (90, 102, 114, 120, 126, 138) sts.

Row 1 (RS): K1, p2, work in K3, P3 Rib to last 3 sts, k3.

Row 2 (WS): P3, work in K3, P3 Rib to last 3 sts, k2, p1.

Rep Rows 1-2 until Front meas 2½" from cast on edge, ending with a WS row. Change to larger ndl.

Front Body

Setup Row (WS): P2tog, k25 (28, 34, 40, 43, 46, 52), pm, p4, pm, k9, p4, k9, pm, p4, pm, k25 (28, 34, 40, 43, 46, 52), ssp - 2 sts dec'd, 82 (88, 100, 112, 118, 124, 136) sts.

Row 1 (RS): K1, purl to m, sl m, work Row 1 (3, 3, 1, 1, 1, 1) of Right Cable to m, sl m, work Row 13 (1, 1, 13, 13, 1, 1) of Center Panel to m, sl m, work Row 1 (2, 2, 1, 1, 1, 1) of Left Cable to m, sl m, purl to last st, k1.

Row 2 (WS): P1, knit to m, sl m, [cont as est'd to m, sl m] 3 times, knit to last st, p1.

Row 3: K1, purl to m, sl m, [cont as est'd to m, sl m] 3 times, purl to last st, k1.

Rep Rows 1-2 until piece meas 15¼, 16½, 16, 17½, 17, 18¼, 17¼)" from cast-on edge. Place removable markers to denote Armholes. Cont as est'd until piece meas approx 5¼ (5¼, 6¼, 6¼, 7¼, 7¼, 8¼)" from Armhole markers, ending with Row 26 of Center Panel (WS row). 4 (5, 5, 5, 5, 6, 6) total reps of Center Panel have been worked.

Shape Front Neck

Note: A chart is provided below to help you visualize a portion of this section.

Row 1 (RS): K1, p8 (11, 17, 23, 26, 29, 35) sl m, p18, 2x2 RC, p6, 2x3 RPC, 2x3 LPC, p6, 2x2 LC, p18, pm, purl to last st, k1.

Row 2 (WS): P1, knit to m, sl m, k18, p4, [k6, p2] 2 times, k6, p4, k18, sl m, knit to last st, p1.

Row 3: K1, purl to m, sl m, p18, k4, p3, 2x3 RPC, p6, 2x3 LPC, p3, k4, p18, sl m, purl to last st, k1.

Row 4: P1, knit to m, sl m, k18, p4, k3, p2, k12, p2, k3, p4, k18, sl m, knit to last st, p1.

Row 5: K1, p18, 2x2 RC, 2x3 RPC, p12, 2x3 LPC, 2x2 LC, p18, sl m, purl to last st, k1.

Row 6: P1, knit to m, sl m, [k18, p6] 2 times, k18, sl m, knit to last st, p1.

Row 7: K1, purl to m, sl m, p18, k1, 2x3 RPC, p18, 2x3 LPC, k1, p18, sl m, purl to last st, k1.

Row 8: P1, knit to m, sl m, k18, p3, k24, p3, k18, sl m, knit to last st, p1.

Row 9: K1, purl to m, sl m, p18, 2x3 RPC, p8, (Left Front) join new ball of yarn and bind off 8 Front Neck sts, p8, 2x3 LPC, p16, sl m, purl to last st, k1 (Right Front). Place Left Front sts on holder. 38 (41, 47, 53, 56, 59, 65) sts rem each Right and Left Front.

Right Front

Note: Charts are provided below to help you visualize a portion of this section.

Row 1 (WS): P1, knit to m, sl m, k16, p2, k11.

Row 2 (RS): Bind off 3 sts, p8, 2x3 LPC, p13, sl m, purl to last st, k1 - 35 (38, 44, 50, 53, 56, 62) sts rem.

Row 3: P1, knit to m, sl m, k13, p2, k11.

Row 4: Bind off 3, p8, 2x3 LPC, p10, sl m, purl to last st, k1 - 32 (35, 41, 47, 50, 53, 59) sts rem.

Row 5: P1, knit to m, sl m, k10, p2, k11.

Row 6: Bind off 3 sts, p8, 2x3 LPC, p7, sl m, purl to last st, k1 - 29 (32, 38, 44, 47, 50, 56) sts rem.

Row 7: P1, knit to m, sl m, k7, p2, k11.

Knit, Relax, Smile, Repeat!

2022 © Universal Yarn, Inc.

www.universalyarn.com

All rights reserved. This pattern may not be reproduced for business, trade or sale.

Questions? Contact patterns@universalyarn.com

Row 8: Bind off 3 sts, p8, 2x3 LPC, p4, sl m, purl to last st, k1 - 26 (29, 35, 41, 44, 47, 53) sts rem.

Row 9: P1, knit to m, sl m, k4, p2, k11.

Row 10: Bind off 2 sts, p9, 2x3 LPC, p1, sl m, purl to last st, k1 - 24 (27, 33, 39, 42, 45, 51) sts rem.

Row 11: P1, knit to m, sl m, k1, p2, k12.

Row 12: Bind off 2 sts, p10, k2, p1, sl m, purl to last st, k1 - 22 (25, 31, 37, 40, 43, 49) sts rem.

Row 13: P1, knit to m, sl m, k1, p2, k10.

Row 14: P10, k2, p1, sl m, purl to last st, k1.

Cont even as est'd, if necessary, until Right Front meas 7¼ (7¾, 8¼, 8¾, 9¼, 9¾, 10¼)" from Armhole markers. Bind off all sts.

Return Left Front sts to ndl.



Left Front

Note: Charts are provided below to help you visualize a portion of this section.

Row 1 (WS): Bind off 3 sts, k8, p2, k16, sl m, knit to last st, p1 - 35 (38, 44, 50, 53, 56, 62) sts rem.

Row 2 (RS): K1, purl to m, sl m, p13, 2x3 RPC, p8.

Row 3: Bind off 3 sts, k8, p2, k13, sl m, knit to last st, p1 - 32 (35, 41, 47, 50, 53, 59) sts rem.

Row 4: K1, purl to m, sl m, p10, 2x3 RPC, p8.

Row 5: Bind off 3 sts, k8, p2, k10, sl m, knit to last st, p1 - 29 (32, 38, 44, 47, 50, 56) sts rem.

Row 6: K1, purl to m, sl m, p7, 2x3 RPC, p8.

Row 7: Bind off 3 sts, k8, p2, k7, sl m, knit to last st, p1 - 26 (29, 35, 41, 44, 47, 53) sts rem.

Row 8: K1, purl to m, sl m, p4, 2x3 RPC, p8.

Row 9: Bind off 2 sts, k9, p2, k4, sl m, knit to last st, p1 - 24 (27, 33, 39, 42, 45, 51) sts rem.

Row 10: K1, purl to m, sl m, p1, 2x3 RPC, p9.

Row 11: Bind off 2 sts, k10, p2, k1, sl m, knit to last st, p1 - 22 (25, 31, 37, 40, 43, 49) sts rem.

Even Rows 12-14: K1, purl to m, sl m, p1, k2, p10.

Row 13: K10, p2, k1, sl m, knit to last st, p1.

Cont even as est'd, if necessary, until Left Front meas 7¼ (7¾, 8¼, 8¾, 9¼, 9¾, 10¼)" from Armhole markers. Bind off all sts.

Left Sleeve

With smaller ndl, cast on 36 (36, 40, 40, 42, 42, 44) sts.

Row 1 (RS): K1, p2 (2, 1, 1, 2, 2, 0) sts, work in K3, P3 Rib to last 3 (3, 2, 2, 3, 3, 1) st(s), k3 (3, 2, 2, 3, 3, 1) st (s).

Row 2 (WS): P3 (3, 2, 2, 3, 3, 1), work in K3, P3 Rib to last 3 (3, 2, 2, 3, 3, 1) st(s), k2 (2, 1, 1, 2, 2, 0), p1. Rep Rows 1-2 until Sleeve meas 2½" from cast on edge, ending with a RS row. Change to larger ndl.

Set up Row (WS): P1, k15 (15, 17, 17, 18, 18, 19), pm, p4, pm, knit to last st, k1.

Row 1 (RS): K1, purl to m, sl m, work Right Cable to m, sl m, purl to last st, k1.

Row 2: P1, knit to m, sl m, work Right Cable to m, sl m, knit to last st, p1.

Inc Row (RS): K1, m1P, purl to m, sl m, work Right Cable to m, sl m, purl to last st, m1P, k1 - 2 sts inc'd, 38 (38, 42, 42, 44, 44, 46) sts.

Rep Inc Row every 6 (6, 6, 4, 4, 4, 4) rows 4 (12, 15, 4, 6, 12, 14) more times, then rep Inc row every 8 (8, 8, 6, 6, 6, 6) rows 9 (3, 1, 14, 13, 9, 8) time(s) - 26 (30, 32, 36, 38, 42, 44) sts inc'd, 64 (68, 74, 78, 82, 86, 90) sts. Cont even as est'd until Sleeve meas 18 (18, 18¼, 18¾, 18½, 18½, 18¾)" from cast on edge. Bind off all sts.

Right Sleeve

With smaller ndl, cast on 36 (36, 40, 40, 42, 42, 44) sts.

Row 1 (RS): K1, p2 (2, 1, 1, 2, 2, 0) sts, work in K3, P3 Rib to last 3 (3, 2, 2, 3, 3, 1) st(s), k3 (3, 2, 2, 3, 3, 1) st (s).

Knit, Relax, Smile, Repeat!

2022 © Universal Yarn, Inc.

www.universalyarn.com

All rights reserved. This pattern may not be reproduced for business, trade or sale.

Questions? Contact patterns@universalyarn.com

Row 2 (WS): P3 (3, 2, 2, 3, 3, 1), work in K3, P3 Rib to last 3 (3, 2, 2, 3, 3, 1) st(s), k2 (2, 1, 1, 2, 2, 0), p1.

Rep Rows 1-2 until Sleeve meas 2½" from cast on edge, ending with a RS row. Change to larger ndl.

Set up Row (WS): P1, k15 (15, 17, 17, 18, 18, 19), pm, p4, pm, knit to last st, k1.

Row 1 (RS): K1, purl to m, sl m, work Left Cable to m, sl m, purl to last st, k1.

Row 2: P1, knit to m, sl m, work Left Cable to m, sl m, knit to last st, p1.

Inc Row (RS): K1, m1P, purl to m, sl m, work Left Cable to m, sl m, purl to last st, m1P, k1 - 2 sts inc'd, 38 (38, 42, 42, 44, 44, 46) sts.

Rep Inc Row every 6 (6, 6, 4, 4, 4, 4) rows 4 (12, 15, 4, 6, 12, 14) more times, then rep Inc row every 8 (8, 8, 6, 6, 6, 6) rows 9 (3, 1, 14, 13, 9, 8) time(s) - 26 (30, 32, 36, 38, 42, 44) sts inc'd, 64 (68, 74, 78, 82, 86, 90) sts. Cont even as est'd until Sleeve meas 18 (18, 18¼, 18¼, 18½, 18½, 18¾)" from cast on edge. Bind off all sts.

FINISHING

Block pieces to finished measurements and weave in ends. Sew Shoulder seams. Sew Sleeves. Sew sides.

Neck Edging

With smaller 16" circ and RS facing, and beg at Back Neck, pick up and knit 40 sts along Back Neck, 23 sts along Left Front, 8 sts along Front Neck bind off, 24 sts along Right Front - 95 sts. PM and join to knit in the rnd.

Rnd 1: * P1, k3, p1; rep from * to end.

Rep Rnd 1 until Neck Edging meas 1". Bind off all sts in patt.

Weave in rem ends.

Abbreviations

approx	approximately
beg	begin(ning)
circ	circular
cn	cable needle
cont	continue
dec('d)	decrease(d)
dpn(s)	double pointed needle(s)
est'd	established
inc('d)	increase(d)
k	knit
LC	left cross
LPC	left purl cross
m1P	insert left needle from back to front under horizontal strand of yarn lying between st just worked

meas	measures
ndl	needle
p	purl
p2tog	purl 2 sts together (1 st dec'd)
patt	pattern
pm	place marker
RC	right cross
rem	remain(ing)
rep	repeat
rev St	reverse Stockinette stitch (purl on RS rows, knit on WS rows; in the rnd, purl every rnd)
rnd	round
RPC	right purl cross
RS	right side
sl	slip
ssp	slip next 2 sts individually knitwise, slip them back to left needle in this position, purl them together through the back loops (1 st dec'd)
st(s)	stitch(es)
WS	wrong side

Knit, Relax, Smile, Repeat!

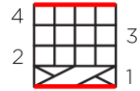
2022 © Universal Yarn, Inc.

www.universalyarn.com

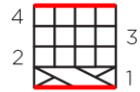
All rights reserved. This pattern may not be reproduced for business, trade or sale.

Questions? Contact patterns@universalyarn.com

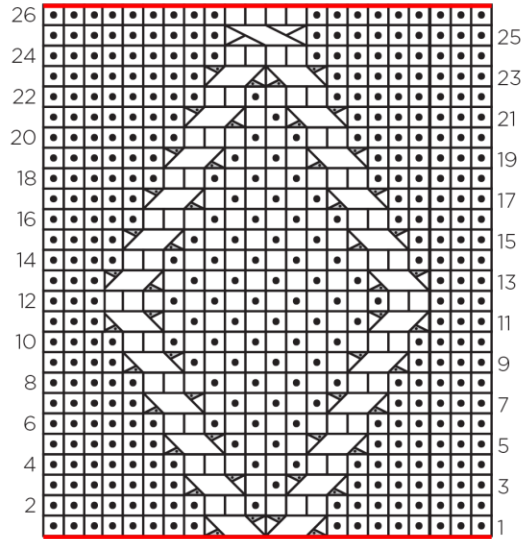
Right Cable













Left Cable



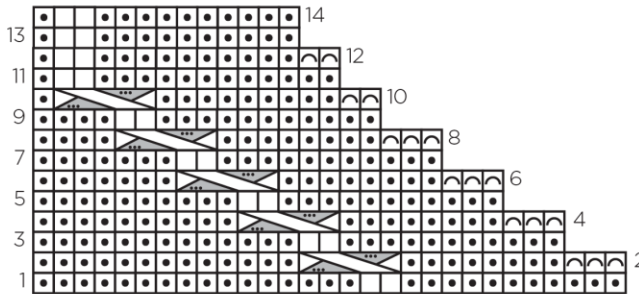
Center Panel



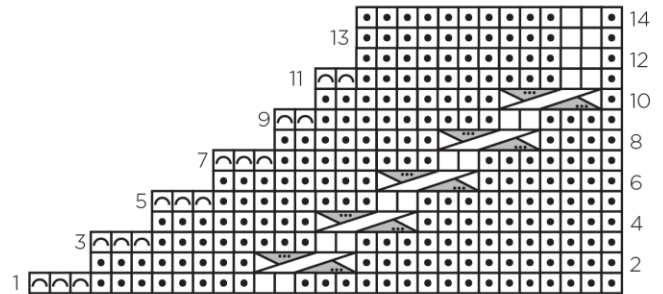
Key

-  pattern repeat
-  purl on RS, knit on WS
-  knit on RS, purl on WS
-  bind off
-  2x1 LPC
-  2x1 RPC
-  2x2 RC
-  2x2 LC
-  3x2 RPC
-  3x2 LPC

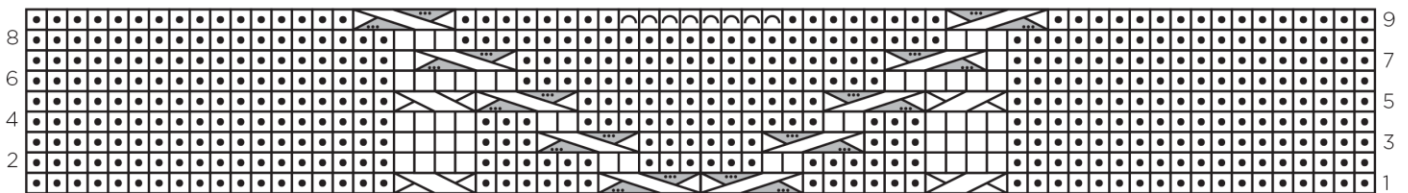
Right Front



Left Front



Neck Shaping



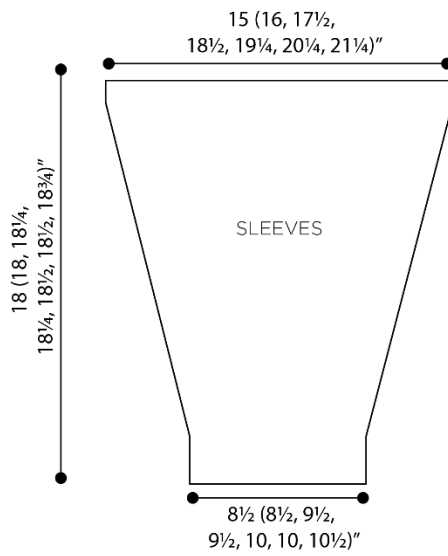
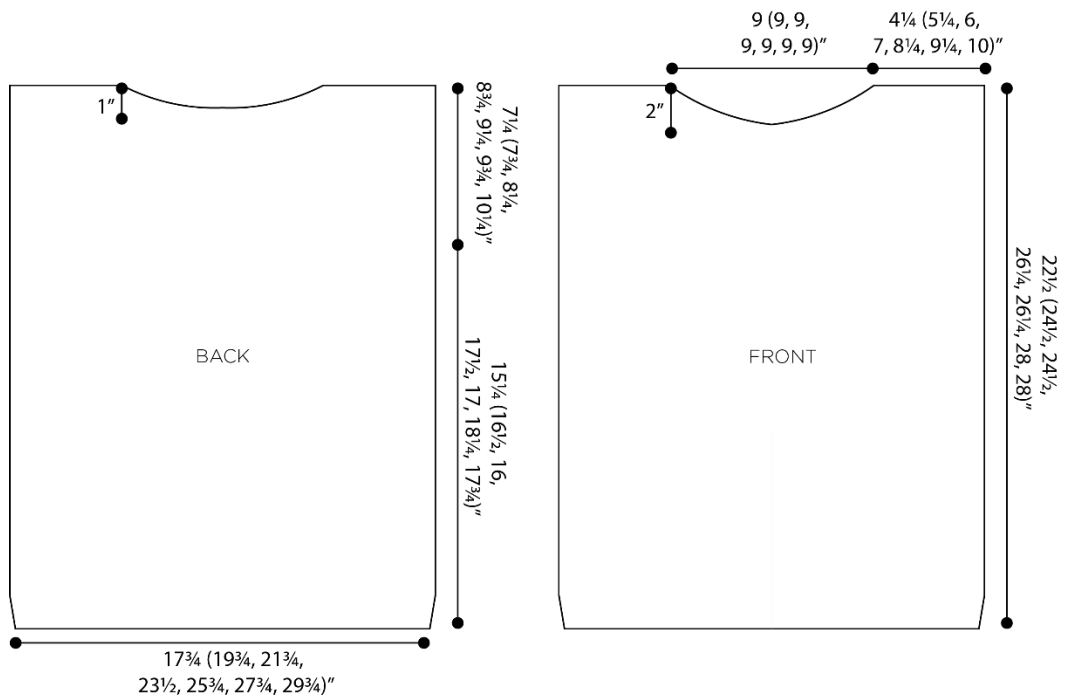
Knit, Relax, Smile, Repeat!

2022 © Universal Yarn, Inc.

www.universalyarn.com

All rights reserved. This pattern may not be reproduced for business, trade or sale.

Questions? Contact patterns@universalyarn.com



Knit, Relax, Smile, Repeat!

2022 © Universal Yarn, Inc.

www.universalyarn.com

All rights reserved. This pattern may not be reproduced for business, trade or sale.

Questions? Contact patterns@universalyarn.com