



Pattern Collection: Accessories



Halfway Home

Designed by Amy Gunderson

SIZE

One

FINISHED MEASUREMENTS

Width: 35½"

Length: 42¾"

MATERIALS

Universal Yarn *Finn* (50% acrylic, 25% superwash merino, 25% alpaca; 50g/230 yds)

- 107 Jam – 3 skeins

Needle: US Size 6 (4 mm) 32" circular *or size needed to obtain gauge*

Notions: Tapestry needle, stitch markers

GAUGE

17 sts x 27 rows = 4" in garter st

Save time, check your gauge.

Knit. Relax. Smile. Repeat!

2018 © Universal Yarn, Inc.

All rights reserved.

www.universalyarn.com

This pattern may not be reproduced for business, trade or sale.

PATTERN NOTES

This slightly oblong triangular shawl begins at the tip with just 7 stitches. Five Herringbone Lace Columns grow out of the left side of the shawl and are continued up to the top edge. The increases occur only at the left side of the piece, making a right triangle shape. The lace pattern is just a 4-row repeat, making it easy to memorize.

This project also makes it easy to customize size as the bulk of the shawl body is maintained in garter stitch. Just be sure to reserve enough yarn for the final 10 rows of garter stitch and you're good!

STITCH GUIDE

Herringbone Lace

(multiple of 8 sts)

Row 1 (RS): * K2, yo, ssk, k1, k2tog, yo, k1; rep from * to end.

Row 2 (WS): Purl.

Row 3: * K1, yo, ssk, yo, sl 2-k1-p2sso, yo, k2tog, yo; rep from * to end.

Row 4: Purl.

Rep Rows 1-4 for patt.

SHAWL

Cast on 7 sts.

Set-up row (RS): K2, pm, k5.

Next row (WS): Knit.

Shape Tip

Row 1 (RS): K1, kfb, sl m, knit to end – 1 st inc'd, 8 sts.

Row 2 (WS): Knit.

Row 3: Knit to 1 st before m, kfb, sl m, knit to end – 1 st inc'd, 9 sts.

Row 4: Knit.

Rows 5-14: Rep Rows 3 & 4, 5 times – 14 sts.

Begin Lace

Note: This is where the chart begins.

Row 1 (RS): K5, pm, k1, yo, ssk, kfb, sl m, knit to end – 1 st inc'd, 15 sts.

WS Rows 2-26: Knit to m, sl m, purl to last 5 sts, sl m, knit to end.

Row 3: Knit to m, sl m, k2, yo, ssk, kfb, sl m, knit to end – 1 st inc'd, 16 sts.

Row 5: Knit to m, sl m, k1, [yo, ssk] 2 times, kfb, sl m, knit to end – 1 st inc'd, 17 sts.

Row 7: Knit to m, sl m, k2, yo, ssk, k2, kfb, sl m, knit to end – 1 st inc'd, 18 sts.

Row 9: Knit to m, sl m, k1, yo, ssk, yo, sl 2-k1-p2sso, yo, k1, kfb, sl m, knit to end – 1 st inc'd, 19 sts.

1 Lace Column now est'd.

Row 11: Knit to m, sl m, k2, yo, ssk, k1, k2tog, yo, k1, pm, kfb, sl m, knit to end – 1 st inc'd, 20 sts.

Row 13: Knit to m, sl m, work Herringbone Lace to m, sl m, k1, kfb, sl m, knit to end – 1 st inc'd, 21 sts.

Row 15: Knit to m, sl m, work Herringbone Lace to m, sl m, k2, kfb, sl m, knit to end – 1 st inc'd, 22 sts.

Row 17: Knit to m, sl m, work Herringbone Lace to m, sl m, k1, yo, ssk, kfb, sl m, knit to end – 1 st inc'd, 23 sts.

Row 19: Knit to m, sl m, work Herringbone Lace to m, sl m, k2, yo, ssk, kfb, sl m, knit to end – 1 st inc'd, 24 sts.

Row 21: Knit to m, sl m, work Herringbone Lace to m, sl m, k1, [yo, ssk] 2 times, kfb, sl m, knit to end – 1 st inc'd, 25 sts.

Row 23: Knit to m, sl m, work Herringbone Lace to m, sl m, k2, yo, ssk, k2, kfb, sl m, knit to end – 1 st inc'd, 26 sts.

Row 25: Knit to m, sl m, work Herringbone Lace to m, sl m, k1, yo, ssk, yo, sl 2-k1-p2sso, yo, k1, kfb, sl m, knit to end – 1 st inc'd, 27 sts.

2 Lace Columns now est'd.

Begin Repeat

Row 27: Knit to m, sl m, work Herringbone Lace to last 6 sts, pm, kfb, sl m, knit to end – 1 st inc'd, 28 sts.

WS Rows 28-42: Knit to m, sl m, purl to last 5 sts, sl m, knit to end.

Row 29: Knit to m, sl m, [work Herringbone Lace to m, sl m] 2 times, k1, kfb, sl m, knit to end – 1 st inc'd, 29 sts.

Row 31: Knit to m, sl m, [work Herringbone Lace to m, sl m] 2 times, k2, kfb, sl m, knit to end – 1 st inc'd, 30 sts.

Knit. Relax. Smile. Repeat!

2018 © Universal Yarn, Inc.

All rights reserved.

www.universalyarn.com

This pattern may not be reproduced for business, trade or sale.

Row 33: Knit to m, sl m, [work Herringbone Lace to m, sl m] 2 times, k1, yo, ssk, kfb, sl m, knit to end – 1 st inc'd, 31 sts.

Row 35: Knit to m, sl m, [work Herringbone Lace to m, sl m] 2 times, k2, yo, ssk, kfb, sl m, knit to end – 1 st inc'd, 32 sts.

Row 37: Knit to m, sl m, [work Herringbone Lace to m, sl m] 2 times, k1, [yo, ssk] 2 times, kfb, sl m, knit to end – 1 st inc'd, 33 sts.

Row 39: Knit to m, sl m, [work Herringbone Lace to m, sl m] 2 times, k2, yo, ssk, k2, kfb, sl m, knit to end – 1 st inc'd, 34 sts.

Row 41: Knit to m, sl m, [work Herringbone Lace to m, sl m] 2 times, k1, yo, ssk, yo, sl 2-k1-p2sso, yo, k1, kfb, sl m, knit to end – 1 st inc'd, 35 sts.
3 Lace Columns now est'd.

Rows 43-74: Rep Rows 27-42, 2 more times, working an extra repeat of Herringbone Lace with each successive repeat of these 16 rows. After Row 74, there are 51 sts.
5 Lace Columns now est'd.

Introduce Garter Section

Row 1 (RS): Knit to m, sl m, [work Herringbone Lace to m, sl m] 5 times, kfb, sl m, knit to end – 1 st inc'd, 52 sts.

Row 2 (WS): Knit to m, sl m, k1, p1, pm, purl to last 5 sts, k5.

Row 3: Knit to m, sl m, [work Herringbone Lace to m, sl m] 5 times, sl m, k1, sl m, kfb, sl m, knit to end – 1 st inc'd, 53 sts.

Row 4: [Knit to m, sl m] 2 times, purl to last 5 sts, k5.

Row 5: Knit to m, sl m, [work Herringbone Lace to m, sl m] 5 times, sl m, k1, sl m, knit to 1 st before m, kfb, sl m, knit to end – 1 st inc'd, 54 sts.

Row 6: [Knit to m, sl m] 2 times, purl to last 5 sts, k5.

Cont as est'd, repeating Rows 3 & 4, and maintaining inc'd sts in garter st 92 times – 146 sts, 94 sts in garter section.

Top Edge

Row 1 (RS): Knit to m, sl m, knit to 1 st before last m, removing other ms as you go, kfb, sl m, knit to end – 1 st inc'd, 147 sts.

Row 2 (WS): Knit.

Row 3: Knit to 1 st before last m, kfb, sl m, knit to end – 1 st inc'd, 148 sts.

Row 4: Knit.

Rows 5-10: Rep Rows 3-4, 3 more times – 151 sts.
Bind off all sts.

FINISHING

Weave in ends but do not trim. Run blocking wires along all edges of shawl. Pin to blocking mat. Wet or steam block, stretching to enhance lace. Once piece is fully dry, trim ends close to work.

Abbreviations

| | |
|------------------|---|
| est'd | established |
| garter st | knit every row |
| inc('d) | increase(d) |
| k | knit |
| k2tog | knit 2 stitches together (1 st dec'd) |
| kfb | knit into front and back of next st (1 st inc'd) |
| m | marker |
| p | purl |
| patt | pattern |
| psso | pass slipped stitch(es) over |
| rep | repeat |
| RS | right side |
| sl | slip |
| ssk | slip next 2 sts individually knitwise, slip them back to left needle in this position, knit them together through the back loops (1 st dec'd) |
| st(s) | stitch(es) |
| WS | wrong side |
| yo | yarn over |

Knit. Relax. Smile. Repeat!

2018 © Universal Yarn, Inc.

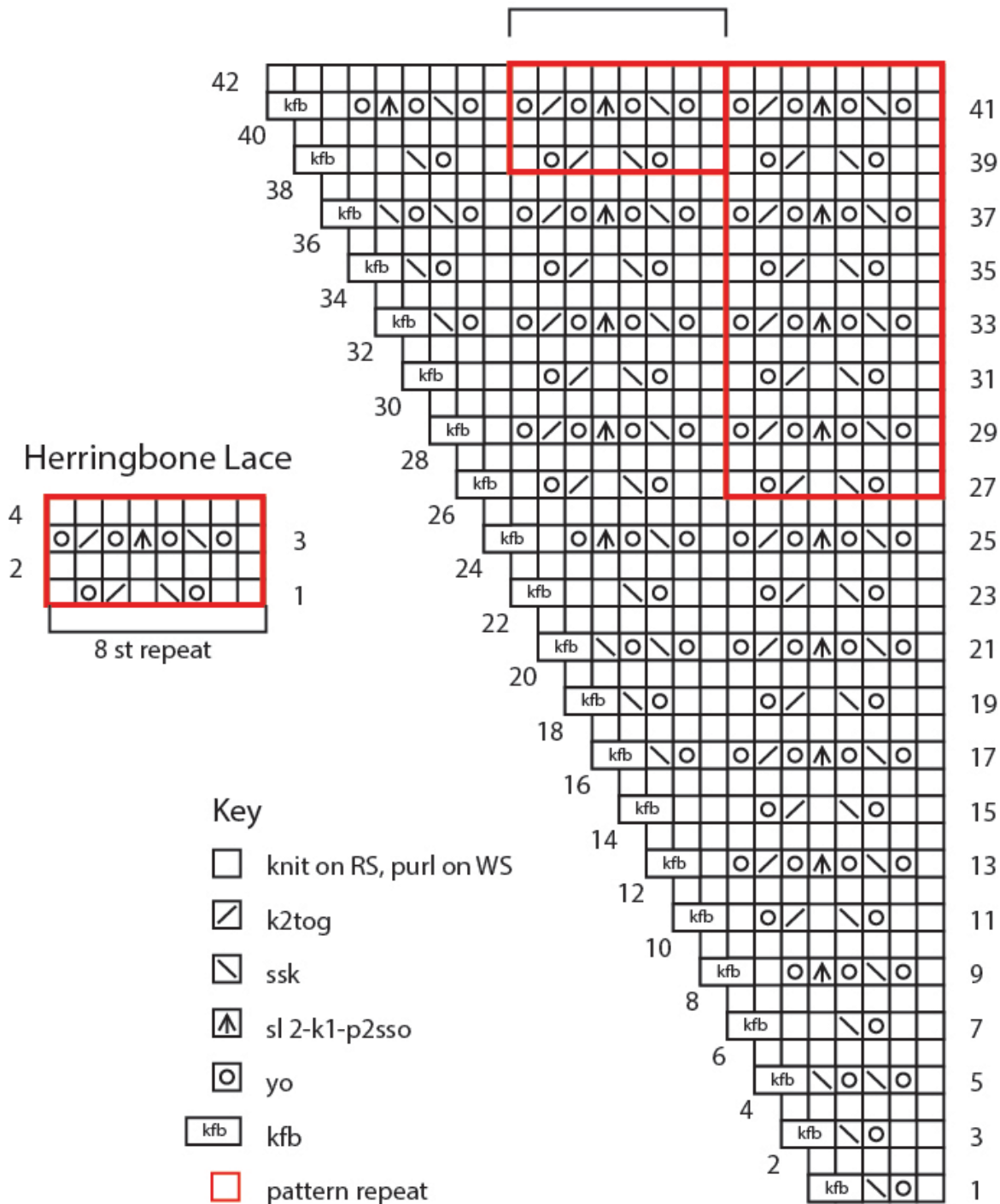
All rights reserved.

www.universalyarn.com

This pattern may not be reproduced for business, trade or sale.

Tip Chart

8 st x 4 row repeat



Knit. Relax. Smile. Repeat!

2018 © Universal Yarn, Inc.

All rights reserved.

www.universalyarn.com

This pattern may not be reproduced for business, trade or sale.