



Pattern Collection: Accessories



Going Places Shawl

Designed by Universal Yarn Design Team

FINISHED MEASUREMENTS

Depth in Center: 31"

Wingspan: 62"

MATERIALS

Universal Yarn *Universe* (42% linen, 41% combed cotton, 9% glitter, 8% polyamide; 50g/246 yds)

- 10-10 Tin – 4 balls

Needles: US Size 5 (3.75 mm)
32" circular and set of DPNs (for edging) *or size needed to obtain gauge*

Notions: Stitch markers, tapestry needle, cable needle (cn)

GAUGE

16 sts x 26 rows = 4" in St st

Save time, check your gauge.

Knit, Relax, Smile, Repeat!

2015 © Universal Yarn, Inc.

All rights reserved.

www.universalyarn.com

This pattern may not be reproduced for business, trade or sale.

PATTERN NOTES

This shawl is worked from the top down.

The edging is worked as a knit-on edge. It is joined to the shawl body at the end of every RS row by knitting a stitch from the shawl body together with a stitch from the edging.

STITCH GUIDE

2x1 LC: Slip next 2 sts to cn and hold in front, k1 from left ndl, k2 from cn.

2x1 RC: Slip next st to cn and hold in back, k2 from left ndl, k1 from cn.

SHAWL BODY

Starting Tab

Cast on 4 sts. Knit 10 rows.

Next row (RS): K4, rotate work 90 degrees, pick up and knit 8 sts from side of Tab, pick up and knit 4 sts – 16 sts.

Next row (WS): P5, pm, p6, pm, p5.

Work Rows 1-32 of Shawl Body chart, then rep Rows 17-32, 8 more times – 336 sts.

Edging

Cast on 7 sts to dpn. Work Rows 1-12 of Edging chart, 56 times – all Shawl Body sts have been worked. Bind off rem Edging sts.

FINISHING

Weave in ends. Wet block shawl tightly, using blocking wires for upper edge of Shawl and pinning out points from Edging.

Abbreviations

beg	begin(ning)
bet	between
circ	circular
cn	cable needle
cont	continue
dec('d)	decrease(d)
inc('d)	increase(d)
k	knit
k2tog	knit 2 stitches together (1 st dec'd)
LH	left hand
m	marker
meas	measures
ndl	needle
patt	pattern

p	purl
pfb	purl into the front and back of next st (1 st inc'd)
pm	place marker
pssso	pass slipped stitch(es) over
pwise	purlwise
rem	remain(ing)
rep	repeat
RH	right hand
RS	right side
ssk	slip next 2 sts individually knitwise, slip them back to left needle in this position, knit them together through the back loops (1 st dec'd)
st(s)	stitch(es)
St st	Stockinette stitch (knit on RS rows, purl on WS rows; in the rnd, knit every rnd)
tbl	through the back loop(s)
tog	together
WS	wrong side
wyib	with yarn held in back
yo	yarn over

Knit. Relax. Smile. Repeat!

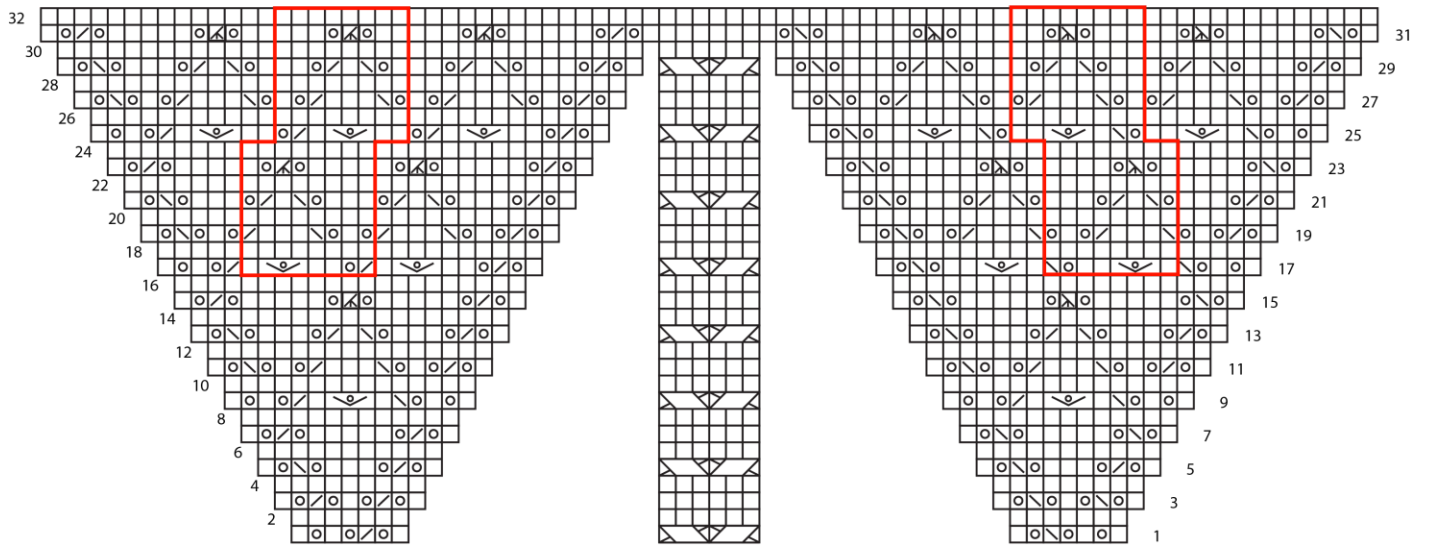
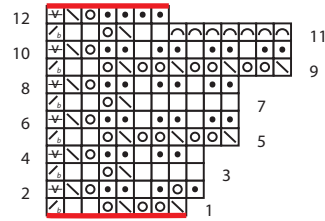
2015 © Universal Yam, Inc.
All rights reserved.
www.universalyarn.com

This pattern may not be reproduced for business, trade or sale.

Key

- knit on RS, purl on WS
- purl on RS, knit on WS
- yarn over
- k2tog on RS or WS
- ssk
- k3tog
- sssk
- [k3tog, yo, knit the same 3 sts tog] over next 3 sts
- 2x1 LC
- 2x1 RC
- sl 1 pwise with yarn on the RS
- k2tog tbl (edging st with shawl st)
- bind off 1 st
- patt rep

Edging



Knit, Relax, Smile, Repeat!

2015 © Universal Yam, Inc.

All rights reserved.

www.universalyam.com

This pattern may not be reproduced for business, trade or sale.