



## PATTERN COLLECTION

### Accessories



#### Gemstones Scarf

Designed by Universal Yarn Design Team

#### DIFFICULTY

Basic

#### SIZES

One Size

#### FINISHED MEASUREMENTS

Length: 69"

Width: 12"

#### MATERIALS

Universal Yarn *Bella Chenille Big Glimmer* (94% polyester, 6% metallized polyester; 200g/87yds)

- 611 Starlight - 2 skeins

**Needles:** US Size 13 (9 mm) straight (or your preferred needle for knitting flat) or size needed to obtain gauge

**Notions:** Tapestry needle

#### GAUGE

6 sts x 7 rows = 4" in Eyelets patt

Save time, check your gauge.

Knit, Relax, Smile, Repeat!

2021 © Universal Yarn, Inc.

[www.universalyarn.com](http://www.universalyarn.com)

All rights reserved. This pattern may not be reproduced for business, trade or sale.

Questions? Contact [patterns@universalyarn.com](mailto:patterns@universalyarn.com)

## PATTERN NOTES

Cold days call for cozy accessories to snuggle up in. Our Bella Chenille Big Glimmer yarn screams 'snuggle', and the squishy chenille yarn is only made better by a gentle touch of glimmer. A simple eyelet stitch pattern worked throughout combined with the glimmer in the yarn makes the Gemstones scarf feel easy to dress up if you need it.

This scarf is knit flat from the bottom up.

## STITCH GUIDE

### Eyelets

(multiple of 4 sts)

**Row 1 (RS):** \* Ssk, [yo] 2 times, k2tog; rep from \* to end.

**Row 2 (WS):** \* P1, [k1, p1] into double yo, p1; rep from \* to end.

**Row 3:** \* Yo, k2tog, ssk, yo; rep from \* to end.

**Row 4:** \* P3, k1; rep from \* to end.

Rep Rows 1-4 for patt.

## PATTERN BEGINS

### SCARF

#### Lower Edging

Cast on 18 sts.

Rows 1-2: Knit.

Rep Rows 1-2, 2 more times.

#### Main Scarf

**Row 1 (RS):** K1, work Row 1 of Eyelets patt to last st, k1. Patt will be repeated 4 times across each row.

**Row 2 (WS):** K1, work Row 2 of Eyelets patt to last st, k1.

**Row 3:** K1, work Row 3 of Eyelets patt to last st, k1.

**Row 4:** K1, work Row 4 of Eyelets patt to last st, k1.

Rep Rows 1-4, 27 more times, then rep Rows 1-2, 1 more time - piece meas approx. 67" from cast-on edge.

#### Upper Border

Rows 1-2: Knit.

Rep Rows 1-2, 2 more times. Bind off all sts kwise.

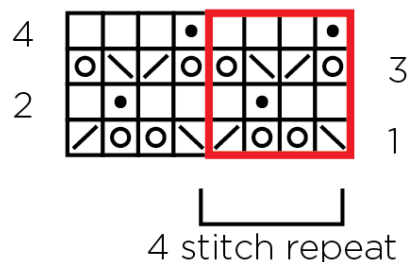
## FINISHING

Gently wash and block to finished measurements. Weave in ends.

## Abbreviations

<b>approx.</b>	approximately
<b>k</b>	knit
<b>k2tog</b>	knit 2 stitches together (1 st dec'd)
<b>kwise</b>	knitwise
<b>meas</b>	measures
<b>p</b>	purl
<b>rep</b>	repeat
<b>RS</b>	right side
<b>ssk</b>	slip next 2 sts individually knitwise, slip them back to left needle in this position, knit them together through the back loops (1 st dec'd)
<b>st(s)</b>	stitch(es)
<b>yo</b>	yarn over

## Eyelets



Knit, Relax, Smile, Repeat!

2021 © Universal Yarn, Inc.

[www.universalyarn.com](http://www.universalyarn.com)

All rights reserved. This pattern may not be reproduced for business, trade or sale.

Questions? Contact [patterns@universalyarn.com](mailto:patterns@universalyarn.com)