



## PATTERN COLLECTION

### Accessories



#### Freya Scarf

Designed by Rachel Brockman

#### DIFFICULTY

Intermediate

#### SIZES

One Size

#### FINISHED MEASUREMENTS

Length: 61¼"

Width: 10½"

#### MATERIALS

[Yarn Vibes Cliffs of Moher](#) (60% Irish wool, 40% wool; 100g/164 yds)

- 03 Sandstone (MC) - 2 skeins
- 06 Foxglove (CC) - 1 skein

**Needle:** US Size 8 (5 mm) 16-24" circular *or size needed to obtain gauge*  
US Size 9 (5.5 mm) 16-24" circular *or size needed to obtain gauge*

**Notions:** Tapestry needle, stitch markers (optional), stitch holder or waste yarn, spare circular needle (for grafting)

#### GAUGE

18 sts x 28 rows = 4" in Slip Stitch patt with larger ndl

18 sts x 20 rows = 4" in Lace patt with smaller ndl

**Save time, check your gauge.**

Knit, Relax, Smile, Repeat!

2022 © Universal Yarn, Inc.

[www.universalyarn.com](http://www.universalyarn.com)

All rights reserved. This pattern may not be reproduced for business, trade or sale.

Questions? Contact [patterns@universalyarn.com](mailto:patterns@universalyarn.com)

## PATTERN NOTES

Often one of the first projects knitters take on, scarves are practically synonymous with knitting. A love note to this staple accessory, the Freya Scarf is an approachable but engaging project. Designed to be symmetrical, each end of this scarf features a two-color slip stitch motif and lovely lace motif that meets in the center. Build your skillset with a sampling of lace, slipped stitches, I-Cord selvedge, and grafting in pattern. Fantastic fringe is the finishing touch!

This scarf is worked flat in two separate pieces, beginning at the ends and each working towards the center. The two pieces are joined at the center by grafting in the pattern stitch to create an invisible join. Each end features a two-color slip stitch pattern, and the center features a lace motif. It is bordered with an I-Cord selvedge that is created by slipping the last three stitches of each row. The scarf is finished with fringe.

## STITCH GUIDE

### Slip Stitch

*(multiple of 2 sts, plus 1)*

**Row 1 (RS):** With CC, knit.

**Row 2 (WS):** With CC, purl.

**Row 3:** With MC, \* sl 1 pwise wyib, k1; rep from \* to last st, sl 1 pwise wyib.

**Row 4:** With MC, sl 1 pwise wyif, \* k1, sl 1 pwise wyif; rep from \* to end.

**Rows 5-6:** With CC, rep Rows 1-2.

**Row 7:** With MC, \* k1, sl 1 pwise wyib; rep from \* to last st, k1.

**Row 8:** With MC, k1, \* sl 1 pwise wyif, k1; rep from \* to end.

Rep Rows 1-8 for patt.

### Lace

*(multiple of 10 sts, plus 1)*

**Row 1 (RS):** \* P1, k9; rep from \* to last st, p1.

**WS Rows 2-16:** K1, \* p9, k1; rep from \* to end.

**Row 3:** \* P1, ssk, k2, yo, k1, yo, k2, k2tog; rep from \* to last st, p1.

**Row 5:** Rep Row 3.

**Row 7:** Rep Row 3.

**Row 9:** \* P1, yo, ssk, k5, k2tog, yo; rep from \* to last st, p1.

**Row 11:** \* P1, k1, yo, ssk, k3, k2tog, yo, k1; rep from \* to last st, p1.

**Row 13:** \* P1, k2, yo, ssk, k1, k2tog, yo, k2; rep from \* to last st, p1.

**Row 15:** \* P1, k3, yo, S2KP2, yo, k3; rep from \* to last st, p1.

Rep Rows 1-16 for patt.

## PATTERN BEGINS

### SCARF

#### FIRST HALF

With larger ndl and CC, cast on 47 sts.

**Rnd 1 (WS):** P3, knit to last 3 sts, sl 3 pwise wyif.

**Rnd 2 (RS):** Knit to last 3 sts, sl 3 pwise wyib.

**Rnd 3:** Rep Row 1.

#### Slip Stitch Section

**Row 1 (RS):** With CC, k3, work Row 1 of Slip Stitch patt to last 3 sts, sl 3 pwise wyib.

**Row 2 (WS):** With CC, p3, work Row 2 of Slip Stitch patt to last 3 sts, sl 3 pwise wyif. Join MC, do not break CC.

**Row 3:** With MC, k3, work Row 3 of Slip Stitch patt to last 3 sts, sl 3 pwise wyib.

**Row 4:** With MC, p3, work Row 4 of Slip Stitch patt to last 3 sts, sl 3 pwise wyib.

Maintaining I-cord Selvedge (knit the first 3 sts and slip the last 3 sts pwise with yarn held to WS of work on every row), cont in patt as est'd through Row 8 of Slip Stitch patt, then rep Rows 1-8, 6 more times.

#### Lace Section

Break CC, continue with MC only. Switch to smaller ndl.

**Row 1 (RS):** With MC, k3, work Row 1 of Lace patt to last 3 sts, sl 3 pwise wyib. Lace patt will be repeated 4 times across each row.

**Row 2 (WS):** P3, work Row 2 of Lace patt to last 3 sts, sl 3 pwise wyif.

Maintaining I-Cord Selvedge (slip the last 3 sts pwise with yarn held to WS of work on every row), cont in patt as est'd through Row 16 of Lace patt, then rep Rows 1-16 of patt 5 more times, then rep Rows 1-15 of patt, 1 more time. Transfer to spare ndl and set aside.

## SECOND HALF

Work as for First Half, but knit last 3 stitches of final row, instead of slipping them. Leave stitches on working needle (do not move them to spare needle). Break yarn, leaving a 1½ yd tail for grafting.

## FINISHING

Holding First Half and Second Half needles parallel, WS together, and with stitches of First Half in front and stitches of Second Half (with grafting tail) in back, graft the two sets of stitches together in pattern as follows:

### *Beginning Steps:*

**Step 1:** Insert tapestry needle pwise into stitch on front needle, leave stitch on needle.

Knit, Relax, Smile, Repeat!

2022 © Universal Yarn, Inc.

[www.universalyarn.com](http://www.universalyarn.com)

All rights reserved. This pattern may not be reproduced for business, trade or sale.

Questions? Contact [patterns@universalyarn.com](mailto:patterns@universalyarn.com)

**Step 2:** Insert tapestry needle kwise into stitch on back needle, leave stitch on needle.

**Step 3:** Insert tapestry needle kwise into stitch on front needle, remove stitch from needle, insert tapestry needle pwise into next stitch on front needle, leave stitch on needle.

**Step 4:** Insert tapestry needle pwise into stitch on back needle, remove stitch from needle, insert tapestry needle kwise into next stitch on back needle, leave stitch on needle.

**Steps 5-6:** Rep Steps 3 and 4.

**Step 7:** Insert tapestry needle kwise into stitch on front needle, remove stitch from needle, insert tapestry needle kwise into next stitch on front needle, leave stitch on needle.

**Step 8:** Insert tapestry needle pwise into stitch on back needle, remove stitch from needle, insert tapestry needle pwise into next stitch on back needle, leave stitch on needle.

#### ***Repeated Sequence:***

**Step 9:** Insert tapestry needle pwise into stitch on front needle, remove stitch from needle, insert tapestry needle pwise into next stitch on front needle, leave stitch on needle.

**Step 10:** Insert tapestry needle kwise into stitch on back needle, remove stitch from needle, insert tapestry needle kwise into next stitch on back needle, leave stitch on needle.

**Steps 11-26:** Rep Steps 3-4, 8 times.

**Steps 27-28:** Rep Steps 7-8.

Rep Steps 9-28, 3 more times — 4 sts rem on each ndl.

#### ***Ending Steps:***

**Steps 29-30:** Rep Steps 9-10.

**Steps 31-34:** Rep Steps 3-4, 2 times.

**Step 35:** Insert tapestry needle kwise into last stitch on front needle, remove stitch from needle.

**Step 36:** Insert tapestry needle pwise into last stitch on back needle, remove stitch from needle.

Gently wash and block to finished measurements. Weave in ends.



#### **Fringe**

With CC, cut 68, 10" strands of yarn. Holding 2 strands together as 1 group, attach 17 groups evenly across each end of Scarf using crochet hook (approx. 1 group every ½"). Trim Fringe to approx. 4".

Knit, Relax, Smile, Repeat!

2022 © Universal Yarn, Inc.

[www.universalyarn.com](http://www.universalyarn.com)

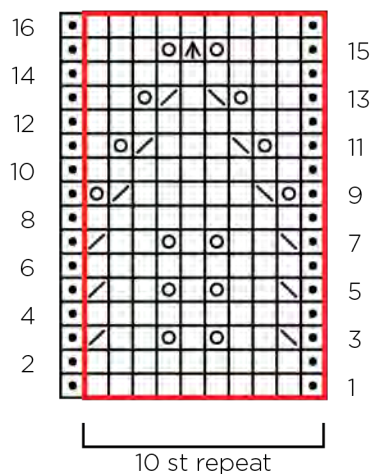
All rights reserved. This pattern may not be reproduced for business, trade or sale.

Questions? Contact [patterns@universalyarn.com](mailto:patterns@universalyarn.com)

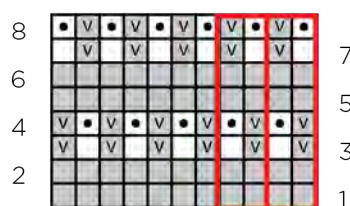
## Abbreviations

approx	approximately
CC	contrast color
est'd	established
k	knit
k2tog	knit 2 stitches together (1 st dec'd)
kwise	knitwise
m	marker
MC	main color
meas	measures
ndl	needle
p	purl
patt	pattern
pwise	purlwise
rep	repeat
RS	right side
S2KP2	slip 2 stitches as if to knit 2 together, knit 1, pass 2 slipped stitches over knit stitch; centered double decreases
sl	slip
ssk	slip next 2 sts individually knitwise, slip them back to left needle in this position, knit them together through the back loops (1 st dec'd)
st(s)	stitch(es)
tog	together
WS	wrong side
wyib	with yarn held in back
wyif	with yarn held in front
yo	yarn over










## Lace



## Slip Stitch



## Key

-  pattern repeat
-  with MC, knit on RS, purl on WS
-  with MC, purl on RS, knit on WS
-  with MC, yo
-  with MC, ssk
-  with MC, k2tog
-  with MC, S2KP2
-  with CC, knit on RS, purl on WS
-  sl 1 pwise wyib on RS, sl 1 pwise wyif on WS

Knit, Relax, Smile, Repeat!

2022 © Universal Yarn, Inc.

[www.universalyarn.com](http://www.universalyarn.com)

All rights reserved. This pattern may not be reproduced for business, trade or sale.

Questions? Contact [patterns@universalyarn.com](mailto:patterns@universalyarn.com)