



## Pattern Collection: Women



### Fresco Cardi

Designed by Rachel Brockman

### SIZES

Extra Small (Small/Medium, Large/1X, 2X/3X, 4X)

Shown in Small/Medium size modeled with 10" of positive ease

### FINISHED MEASUREMENTS

**Bust:** 33½ (41¾, 50¼, 58½, 66¾)" (with fronts overlapping)

**Length:** 23¾ (24½, 25¼, 26, 26¾)"

### MATERIALS

**Universal Yarn Adore Colors** (55% superwash merino, 45% anti-pilling acrylic; 100 g/273 yds)

- 206 Aqua Print (MC) – 5 (6, 8, 9, 10) skeins

**Universal Yarn Adore** (55% superwash merino, 45% anti-pilling acrylic; 100 g/273 yds)

- 129 Sand (CC) – 2 (2, 2, 3, 3) skeins

**Needles:** US Size 7 (4.75 mm) straight *or size needed to obtain gauge*

US Size 6 (4.5 mm) straight and 40" circular (to accommodate large number of sts) *or size needed to obtain gauge*

*Knit. Relax. Smile. Repeat!*

2018 © Universal Yarn, Inc.

All rights reserved.

[www.universalyarn.com](http://www.universalyarn.com)

This pattern may not be reproduced for business, trade or sale.

**Notions:** removable stitch markers, stitch markers (*optional*), tapestry needle, stitch holder or waste yarn

### GAUGE

23 sts x 46 rows = 4" in Mosaic patt with larger ndl

23 sts x 28 rows = 4" in St st with smaller ndl

**Save time, check your gauge.**

### PATTERN NOTES

As the weather begins to throw in some chills toward the end of the day, a cardigan is the perfect thing to throw on for some quick warmth. The Fresco Cardi's patterning along the lower edge is created with mosaic knitting. Only one color is used each row, and slipped stitches form the patterning. There is no shaping during the mosaic sections making it easy to focus on the intriguing diamonds appearing across your knitting.

Self-stripping Adore Colors adds further interest to the colorwork. And once the mosaic section is done, the self-stripping yarn still looks fantastic all on its own in stockinette stitch.

This project is knit flat in pieces from the bottom up. After the body is seamed, stitches are picked up around the front opening for the Neck Edging.

### How to read mosaic charts:

- Only one color is used per row. The color shown in the first stitch of any given row is the color that will be used for that row.
- On RS rows, knit all stitches in the color you're working with and slip the stitches that are not in that color.
- On WS rows, do the exact same thing – knit the stitches in the color you're working with and slip the stitches in the other color.
- Always work 2 rows in the same color – a stitch will never change color on the WS row.
- Slip all stitches with the yarn held to the WS of the work.

**Sloped Bind-off:** On the row before the bind-off row, slip the last stitch of the row pwise wyib. On the bind-off row, sl 2, pass the second slipped st over the first slipped st, bind off rem sts as usual.

### STITCH GUIDE

#### Shadow Rib

(multiple of 3 sts + 2)

**Row 1 (RS):** P2, \* k1 tbl, p2; rep from \* to end.

**Row 2 (WS):** Knit.

Rep Rows 1-2 for patt.

#### BACK

With smaller ndl and CC, cast on cast on 101 (125, 149, 173, 197) sts. Work in Shadow Rib patt until piece meas 3½" from cast-on edge, dec'ing 2 sts evenly on last WS row – 99 (123, 147, 171, 195) sts rem.

#### Mosaic Section

Change to larger ndl. Join MC, do not break CC. Work Rows 1-48 of Mosaic patt, one time, then work Rows 1-30 of Mosaic patt one more time. Patt will be rep'd 4 (5, 6, 7, 8) times across each row. Break CC, do not break MC.

#### Stockinette Section

Change to smaller needle.

**Row 1 (RS):** With MC, knit.

**Row 2 (WS):** Purl.

Cont in St st as est'd until piece meas 15½" from cast-on edge, ending with a WS row. Place a removable stitch marker on each side of work to denote armholes. Cont in St st until piece meas 7¼ (8, 8¾, 9½, 10¼)" from armhole markers, ending with a WS Row.

#### Shape Back Neck and Shoulders

**Row 1 (RS):** K31 (42, 54, 65, 77) Right Back sts, join new ball of yarn and bind off 37 (39, 39, 41, 41) Back Neck sts, k31 (42, 54, 65, 77) Left Back sts. Place Right Back sts on holder or waste yarn.

#### Left Back

*Note: Used the Sloped Bind-off method.*

**Row 1 (WS):** Bind off 5 (7, 10, 12, 14), cont as est'd to end – 26 (35, 44, 53, 63) sts rem.

**Row 2 (RS):** Bind off 1, cont as est'd to end – 25 (34, 43, 52, 62) sts rem.

*Knit. Relax. Smile. Repeat!*

2018 © Universal Yarn, Inc.

All rights reserved.

www.universalyarn.com

This pattern may not be reproduced for business, trade or sale.

**Row 3:** Bind off 5 (7, 10, 12, 14), cont as est'd to end – 20 (27, 33, 40, 48) sts rem.

**Row 4:** Bind off 1, cont as est'd to end – 19 (26, 32, 39, 47) sts rem.

**Row 5:** Bind off 5 (8, 10, 12, 15), cont as est'd to end – 14 (18, 22, 27, 32) sts rem.

**Row 6:** Bind off 1, cont as est'd to end – 13 (17, 21, 26, 31) sts rem.

**Row 7:** Bind off 6 (8, 10, 12, 15), cont as est'd to end – 7 (9, 11, 14, 16) sts rem.

**Row 8:** Bind off 1, cont as est'd to end – 6 (8, 10, 13, 15) sts rem. Bind off rem sts.

### Right Back

*Note: Used the Sloped Bind-off method.*

**Row 1 (WS):** Bind off 1, cont as est'd to end – 30 (41, 53, 64, 76) sts rem.

**Row 2 (RS):** Bind off 5 (7, 10, 12, 14), cont as est'd to end – 25 (34, 43, 52, 62) sts rem.

**Row 3:** Bind off 1, cont as est'd to end – 24 (33, 42, 51, 61) sts rem.

**Row 4:** Bind off 5 (7, 10, 12, 14), cont as est'd to end – 19 (26, 32, 39, 47) sts rem.

**Row 5:** Bind off 1, cont as est'd to end – 18 (25, 31, 38, 46) sts rem.

**Row 6:** Bind off 5 (8, 10, 12, 15), cont as est'd to end – 13 (17, 21, 26, 31) sts rem.

**Row 7:** Bind off 1, cont as est'd to end – 12 (16, 20, 25, 30) sts rem.

**Row 8:** Bind off 6 (8, 10, 12, 15), cont as est'd to end – 6 (8, 10, 13, 15) sts rem. Bind off rem sts.

### LEFT FRONT

With smaller ndl and CC, cast on cast on 41 (53, 65, 77, 89) sts. Work in Shadow Rib patt until piece meas 3½" from cast-on edge, dec'ing 2 sts evenly on last WS row – 39 (51, 63, 75, 87) sts rem.

### Mosaic Section

*Note: Small/Medium and 2X/3X Sizes will follow the Mosaic chart. Extra Small, Large/1X, and 4X will follow Left Front Mosaic chart.*

Change to larger ndl. Join MC, do not break CC. Work Rows 1-48 of Mosaic patt, one time, then work Rows 1-30 of Mosaic patt one more time. Patt will be rep'd 1 (2, 2, 3, 3) full times across each row. Break CC, do not break MC.

### Stockinette Section

Change to smaller needle.

**Row 1 (RS):** With MC, knit.

**Row 2 (WS):** Purl.

Cont in St st as est'd until piece meas 14" from cast-on edge, ending with a WS row.

### Shape Front Neck

**Dec Row (RS):** Knit to last 3 sts, ssk, k1 – 1 st dec'd, 38 (50, 62, 74, 86) sts rem. Rep Dec row every 6 rows, 3 (4, 6, 7, 9) more times, then rep Dec row every 4 rows, 8 (8, 6, 6, 4) times – 12 (13, 13, 14, 14) total Neck sts dec'd. After all Neck decs are complete, 27 (38, 50, 61, 73) sts rem.

*At the same time*, when piece meas 15½" from cast-on edge, place removable marker at right edge of piece to indicate armhole.

Cont in St st until piece meas 7¼ (8, 8¾, 9½, 10¼)" from armhole markers, ending with a WS Row.

### Shape Shoulder

Bind off 5 (7, 10, 12, 14) sts at beg of next 3 (2, 4, 4, 2) RS rows, bind off 6 (8, -, -, 15) sts at beg of next 1 (2, -, -, 2) RS rows. Bind off rem 6 (8, 10, 13, 15) sts.

### RIGHT FRONT

Work as for Left Front, substituting Right Front Mosaic chart for noted sizes during Mosaic Section. Work Stockinette Section until piece meas 14" from cast-on edge, ending with a WS row.

### Shape Front Neck

**Dec row (RS):** K1, k2tog, knit to end – 1 st dec'd, 38 (50, 62, 74, 86) sts rem. Rep Dec row every 6 rows, 3 (4, 6, 7, 9) more times, then rep Dec row every 4 rows, 8 (8, 6, 6, 4) times – 12 (13, 13, 14, 14) total Neck sts dec'd. After all Neck decs are complete, 27 (38, 50, 61, 73) sts rem.

*At the same time*, when piece meas 15½" from cast-on edge, place removable marker at right edge of piece to indicate armhole.

Cont in St st until piece meas 7¼ (8, 8¾, 9½, 10¼)" from armhole markers, ending with a RS Row.

*Knit. Relax. Smile. Repeat!*

2018 © Universal Yarn, Inc.

All rights reserved.

[www.universalyarn.com](http://www.universalyarn.com)

This pattern may not be reproduced for business, trade or sale.

### Shape Shoulder

Bind off 5 (7, 10, 12, 14) sts at beg of next 3 (2, 4, 4, 2) WS rows, bind off 6 (8, -, -, 15) sts at beg of next 1 (2, -, -, 2) WS rows. Bind off rem 6 (8, 10, 13, 15) sts.

### SLEEVES

With CC and smaller ndl, cast on 44 (47, 50, 53, 56) sts. Work in Shadow Rib until piece meas 2½" from cast-on edge, ending with WS row.

#### Main Sleeve

Change to MC and larger ndl. Work in St st for 2 rows.

**Inc row (RS):** K1, m1R, knit to last st, m1L, k1 – 2 sts inc'd. Rep Inc row every 4 (4, 2, 2, 2) rows, 13 (21, 2, 8, 13) more times, then rep Inc row every 6 (6, 4, 4, 4) rows, 6 (1, 22, 19, 17) time(s) – 84 (93, 100, 109, 118) sts. Work even in St st until Sleeve meas 18¼ (18¼, 18½, 18½, 18¾)" from cast-on edge, ending with WS row. Bind off all sts.

### FINISHING

Block to measurements and weave in ends. Sew Shoulder Seams. Sew Sleeves seams to body, using removable markers as a guide. Sew Sleeve and side seams.

#### Neck Band

With CC and smaller circ ndl, with RS facing, beg 3½" above cast-on edge, pick up and knit 64 sts to beg of Neck shaping, 52 (57, 60, 65, 68) sts along Right Front Neck, 6 sts along Right Back Neck, 37 (39, 39, 41, 41) sts along Back Neck bind-off, 6 sts along Left Back neck, 52 (57, 60, 65, 68) sts along Left Front Neck to beg of Neck shaping, and 64 sts along Left Front to 3½" above cast-on edge – 281 (293, 299, 311, 317) sts. Work in Shadow Rib until piece meas 3½", ending with WS row. Bind off all sts.

Block Neck Band. Weave in rem ends.

### Abbreviations

<b>beg</b>	begin(ning)
<b>CC</b>	contrast color
<b>circ</b>	circular

<b>cont</b>	continue
<b>dec('d)</b>	decrease(d)
<b>est'd</b>	established
<b>inc('d)</b>	increase(d)
<b>k</b>	knit
<b>k2tog</b>	knit 2 stitches together (1 st dec'd)
<b>m</b>	marker
<b>m1L</b>	insert left needle from front to back under horizontal strand of yarn lying between st just worked and next st, knit or purl this st through the back loop (1 st inc'd)
<b>m1R</b>	insert left needle from back to front under horizontal strand of yarn lying between st just worked and next st, knit or purl this st through the front loop (1 st inc'd)
<b>MC</b>	main color
<b>meas</b>	measures
<b>ndl</b>	needle
<b>p</b>	purl
<b>patt</b>	pattern
<b>pwise</b>	purlwise
<b>rem</b>	remain(ing)
<b>rep</b>	repeat
<b>RS</b>	right side
<b>sl</b>	slip
<b>ssk</b>	slip next 2 sts individually knitwise, slip them back to left needle in this position, knit them together through the back loops (1 st dec'd)
<b>St st</b>	Stockinette stitch (knit on RS rows, purl on WS rows; in the rnd, knit every rnd)
<b>st(s)</b>	stitch(es)
<b>tbl</b>	through the back loop(s)
<b>WS</b>	wrong side
<b>wyib</b>	with yarn held in back

*Knit. Relax. Smile. Repeat!*

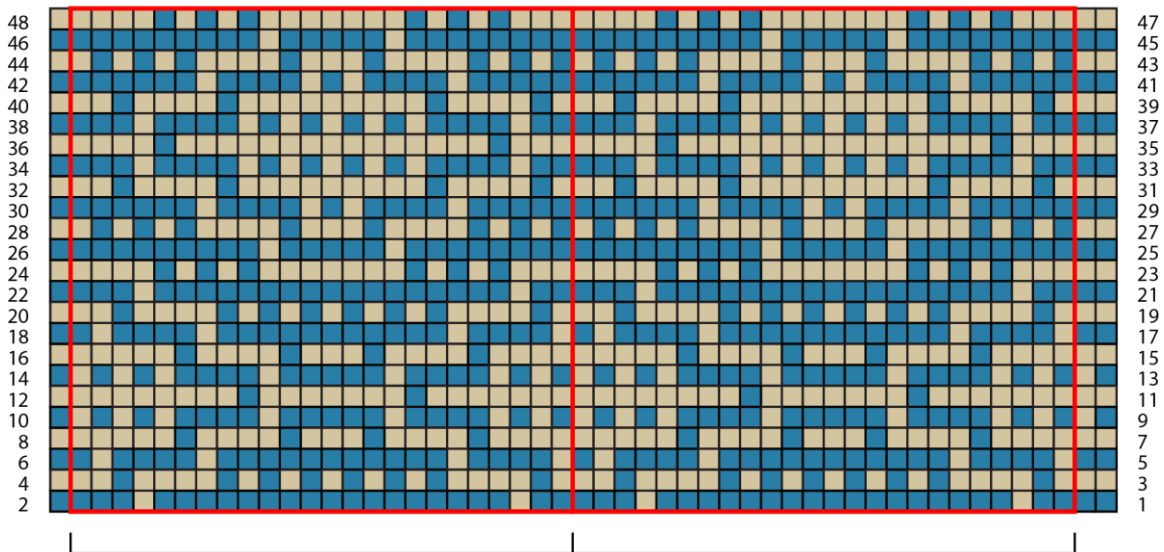
2018 © Universal Yarn, Inc.

All rights reserved.

[www.universalyarn.com](http://www.universalyarn.com)

This pattern may not be reproduced for business, trade or sale.

## Mosaic



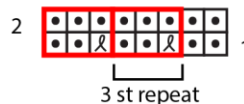
24 st repeat  
2 repeats shown

\*Note: Read pattern notes for instructions on how to use this chart

### Key

- pattern repeat
- MC
- CC
- purl on RS, knit on WS
- ℓ k tbl

### Shadow Rib



*Knit. Relax. Smile. Repeat!*

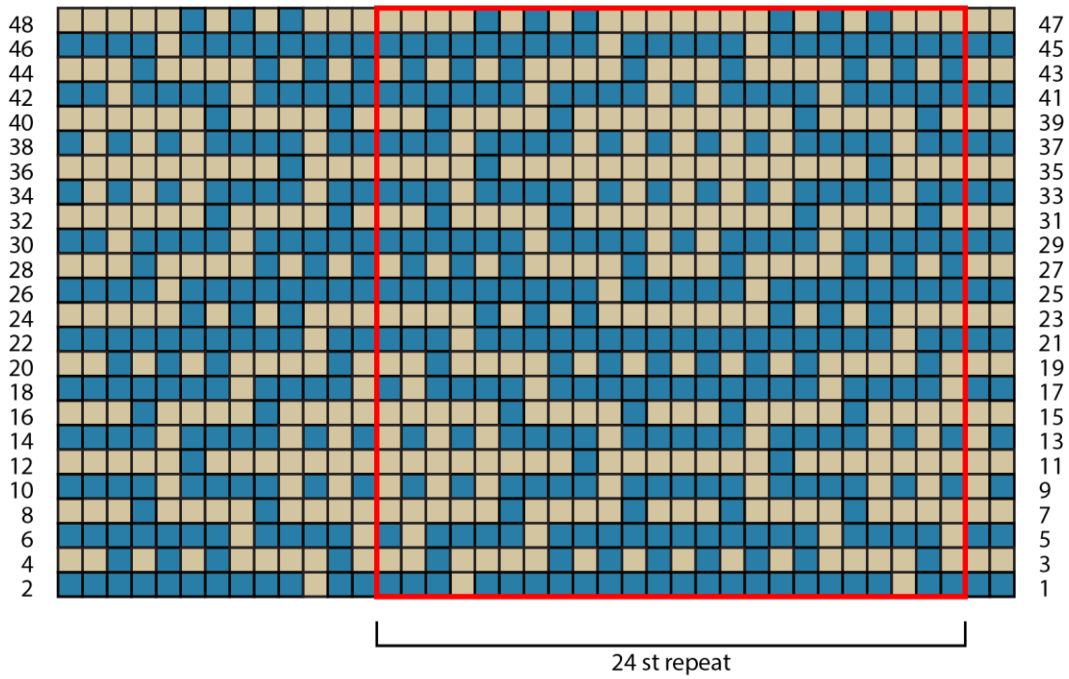
2018 © Universal Yarn, Inc.

All rights reserved.

[www.universalyarn.com](http://www.universalyarn.com)

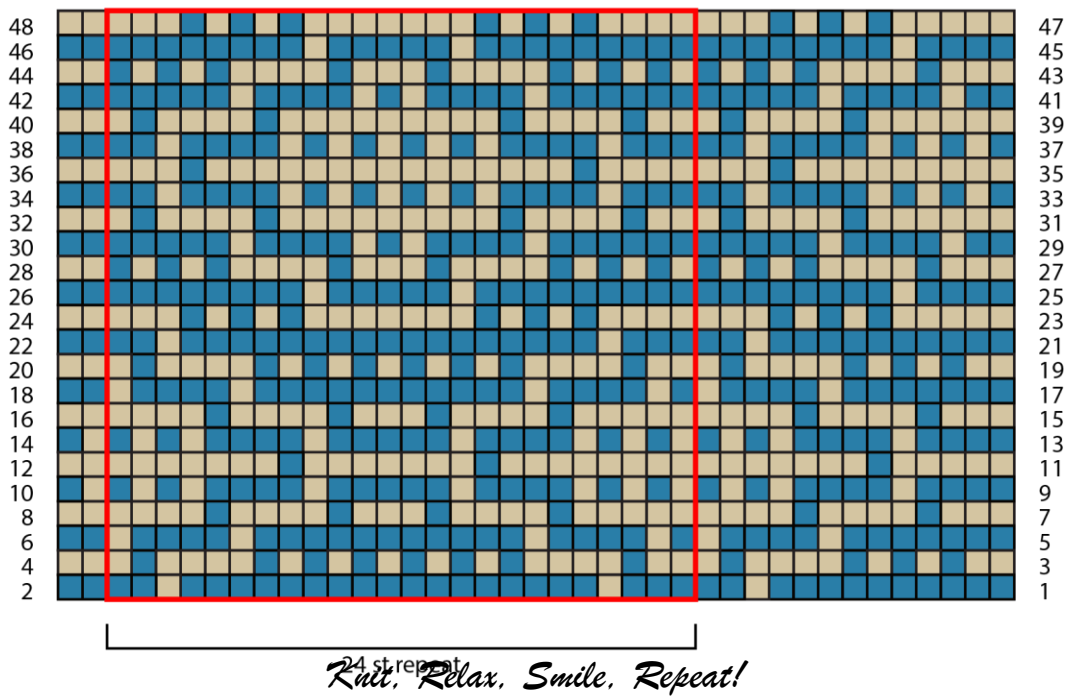
This pattern may not be reproduced for business, trade or sale.

Right Front Mosaic  
 Sizes Extra Small, Large/1X, and 4X only



\*Note: Read pattern notes for instructions on how to use this chart

Left Front Mosaic  
 Sizes Extra Small, Large/1X, and 4X only



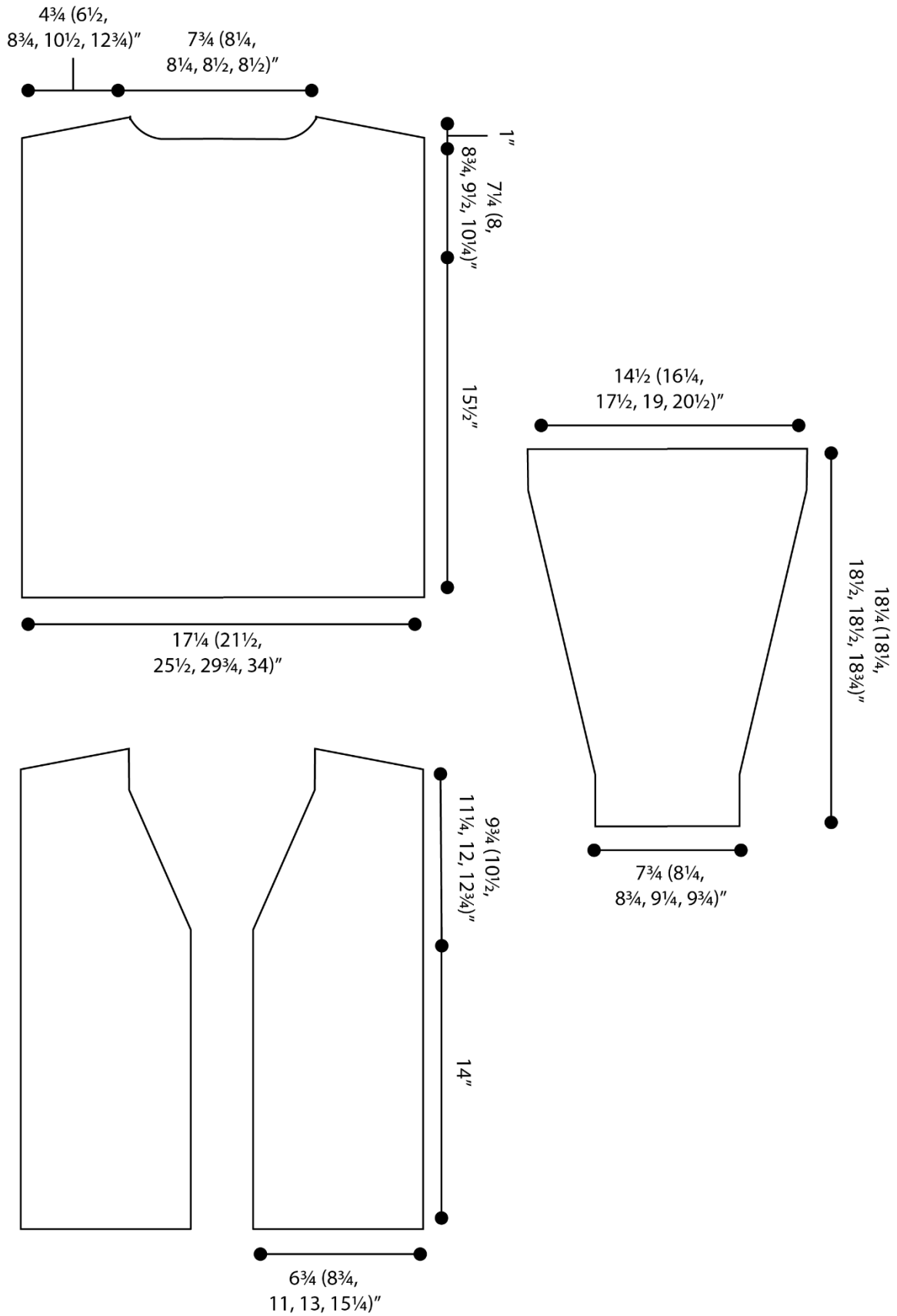
*Knit. Relax. Smile. Repeat!*

2018 © Universal Yarn, Inc.

All rights reserved.

[www.universalyarn.com](http://www.universalyarn.com)

This pattern may not be reproduced for business, trade or sale.



*Knit. Relax. Smile. Repeat!*

2018 © Universal Yarn, Inc.

All rights reserved.

[www.universalyarn.com](http://www.universalyarn.com)

This pattern may not be reproduced for business, trade or sale.