



PATTERN COLLECTION

Accessories



Fray Hat

Designed by Aubrey Busek

DIFFICULTY

Easy

SIZES

Adult Small (Medium, Large)

Shown in Adult Small size.

FINISHED MEASUREMENTS

Brim Circumference: 16 (18½, 20½)''

Stretches to approx 18 (21, 23)''.

Length: 8 (8½, 9)''

MATERIALS

Universal Yarn *Minou* (52% nylon, 40% baby alpaca, 8% merino; 50g/158 yds)

- 104 Kitten (A) - 1 ball (all sizes)

Fibra Natura *Ravello* (75% cotton, 16% extra fine merino, 9% recycled cashmere; 50g/207 yds)

- 110 Vapour (B) - 1 ball (all sizes)

Needle: US Size 6 (4 mm) 16'' circular and set of DPNs (or your preferred ndl for knitting in the round) *or size needed to obtain gauge*

US Size 5 (3.75 mm) 16'' circular

Notions: Tapestry needle, stitch markers

GAUGE

18 sts x 28 rnds = 4'' in Slip Stitch patt with larger ndl

Save time, check your gauge.

Knit, Relax, Smile, Repeat!

2021 © Universal Yarn, Inc.

www.universalyarn.com

All rights reserved. This pattern may not be reproduced for business, trade or sale.

Questions? Contact patterns@universalyarn.com

PATTERN NOTES

Fray is a clever take on effortlessly cool, distressed denim – except the Fray Hat is knit using an irresistible combination of yarns. Minou, a sophisticated eyelash yarn, is a soft, warm blend of baby alpaca, merino wool, and nylon and creates the impression of frayed denim. It is paired with Ravello in a rich blue hue, using slip stitches to introduce visual and textural interest. The result is a hat perfect for keeping you warm and comfortable on cool days. Our favorite part? This hat is aesthetically reversible, making it a cinch to style and wear!

This hat is knit in the round from the bottom up.

STITCH GUIDE

K1, P1 Rib

(even number of sts)

Rnd 1: * K1, p1; rep from * to end.

Rep Rnd 1 for patt.

Slip Stitch

(multiple of 2 sts)

Rnd 1: Knit.

Rnd 2: * P1, sl 1 wyif; rep from * to end.

Rnd 3: Knit.

Rnd 4: * Sl 1 wyif, p1; rep from * to end.

Rep Rnds 1-4 for patt.

HAT

Brim

With smaller ndl and 2 strands of color B held together as one, cast on 72 (80, 88) sts. PM and join to knit in the round, being careful not to twist.

Rnd 1: Work Rnd 1 of K1, P1 Rib to end.

Cont as est'd in K1, P1 Rib until piece meas approx 1" from cast-on edge. Break 1 strand of color B, join 1 strand of color A. You will now be working with colors A & B held together as one.

Hat Body

Note: During this pattern, you will work with colors A and B held together, except where otherwise noted. When working with B only, do not break A, instead carry the yarn along the inside of the work.

Rnd 1: With colors A & B held together, work Rnd 1 of Slip Stitch patt to end.

Rnd 2: With colors A & B held together, work Rnd 2 of Slip Stitch patt to end.

Cont as est'd through Rnd 4 of Slip Stitch patt, then rep Rnds 1-4, one more time.



Rnds 9-12: With color B only, work Rnds 1-4, one time.

Rep Rows 1-12 until piece meas approx 6 (6½, 7)" from cast-on edge, and ending with either Rnd 1 or 3 of patt.

Crown Shaping

Note 1: Maintain patt as est'd in Rnds 1-12 of previous section throughout Crown Shaping.

Note 2: Change to DPNs when there are too few sts to fit comfortably on 16" circ ndl.

Set-up Rnd: * Cont as est'd in Slip Stitch patt over 8 sts, pm; rep from * to end – 9 (10, 11) markers placed across rnd.

Dec Rnd: * Cont as est'd to 2 sts bef m, ssk; rep from * to end – 9 (10, 11) sts dec'd, 63 (70, 77) sts rem.

Even Rnd: Cont as est'd in Slip Stitch patt to end. Rep Dec Rnd and Even Rnd, 6 more times – 54 (60, 66) sts dec'd, 9 (10, 11) sts rem.

Break yarn leaving an 8" tail, pass tail through rem live sts, pull taut, and fasten off.

FINISHING

Weave in ends. Wash and block to finished measurements.

Knit, Relax, Smile, Repeat!

2021 © Universal Yarn, Inc.

www.universalyarn.com

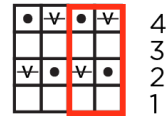
All rights reserved. This pattern may not be reproduced for business, trade or sale.

Questions? Contact patterns@universalyarn.com


Abbreviations

approx	approximately
cont	continue
dec('d)	decrease(d)
dpn(s)	double pointed needle(s)
est'd	established
k	knit
m	marker
ndl	needle
p	purl
patt	pattern
pm	place marker
rem	remain(ing)
rep	repeat
rnd	round
ssk	slip next 2 sts individually knitwise, slip them back to left needle in this position, knit them together through the back loops (1 st dec'd)
st(s)	stitch(es)
wyif	with yarn held in front

Slip Stitch



Key

-  pattern repeat
-  knit
-  purl
-  sl 1 wyif

Knit, Relax, Smile, Repeat!

2021 © Universal Yarn, Inc.

www.universalyarn.com

All rights reserved. This pattern may not be reproduced for business, trade or sale.

Questions? Contact patterns@universalyarn.com