



## Pattern Collection: Accessories



### Flying V Shawl

Designed by Universal Yarn Design Team

### SIZES

One

### FINISHED MEASUREMENTS

Width along top edge: 64"

Depth in center: 31½"

### MATERIALS

#### Universal Yarn

*Unity Beyond* (36% wool, 28% cotton, 18% linen, 18% bamboo); 100/262 yds)

- 206 Adobe (MC) – 2 skeins

*Unity* (36% wool, 28% cotton, 18% linen, 18% bamboo); 100/262 yds)

- 106 Ink (B) – 1 skein

**Needles:** US Size 5 (3.75 mm) 32" circular *or size needed to obtain gauge*

**Notions:** Tapestry needle, 4 stitch markers

### GAUGE

16 sts x 32 rows = 4" in Garter St

**Save time, check your gauge.**

*Knit. Relax. Smile. Repeat!*

2017 © Universal Yarn, Inc.

All rights reserved.

[www.universalyarn.com](http://www.universalyarn.com)

This pattern may not be reproduced for business, trade or sale.

## PATTERN NOTES

This triangular shawl features a lovely lace border that complements the simplicity of garter stripes. Knit in Unity, a perfect blend of plant fibers and wool, this shawl makes a wonderful transitional piece from cool summer nights to crisp autumn days.

## STITCH GUIDE

### Lace Patt

(multiple of 6 sts + 2)

**Row 1 (RS):** K1, \*k3, yo, k3tog, yo; rep from \* to last st, k1.

**Row 2 (WS):** Purl.

**Row 3:** K1, \*yo, k3tog, yo, k3; rep from \* to last 4 sts, k4.

**Row 4:** Purl.

Rep Rows 1-4 for patt.

## SHAWL

### Starting Tab

With MC, cast on 3 sts. Knit 7 rows in garter st.

**Set-up row 1 (RS):** K3, rotate work 90 degrees, pick up and knit 3 sts from side of Tab, pick up and knit 3 sts from cast-on edge – 9 sts.

**Set-up row 2 (WS):** K3, pm, k1, pm, p1, pm, k1, pm, k3.

**Set-up row 3:** K3, sl m, k1, yo, sl m, k1, sl m, yo, k1, sl m, k3 – 2 sts inc'd, 11 sts.

**Set-up row 4:** K3, sl m, knit to m, sl m, p1, sl m, knit to m, sl m, k3.

### Establish Pattern

**Row 1:** K3, sl m, yo, knit to m, yo, sl m, k1, sl m, yo, knit to m, yo, sl m, k3 – 4 sts inc'd, 15 sts.

**Row 2:** K3, sl m, knit to m, sl m, p1, sl m, knit to m, sl m, k3. Rep Rows 1-2, 18 more times – 72 sts inc'd, 87 sts.

Break yarn. Slide sts to other end of ndl.

### Eyelet Stripe 1

**Row 1 (WS)** With color B: K3, sl m, purl to m, sl m, p1, sl m, purl to m, sl m, k3.

**Row 2 (RS):** With color B: K3, sl m, \* yo, p2tog; rep from \* to m, yo, m1p, sl m, k1, sl m, m1p, \* yo, p2tog; rep from \* to m, yo, sl m, k3. – 4 sts inc'd, 91 sts.

**Row 3:** K3, sl m, knit to m, sl m, p1, sl m, knit to m, sl m, k3.

**Row 4:** K3, sl m, yo, knit to m, yo, sl m, k1, sl m, yo, knit to m, yo, sl m, k3 – 4 sts inc'd, 95 sts.  
Break yarn. Slide sts to other end of ndl.

### MC Stripe 1

**Row 1 (RS):** K3, sl m, yo, knit to m, yo, sl m, k1, sl m, yo, knit to m, yo, sl m, k3 – 4 sts inc'd, 99 sts.

**Row 2 (WS):** K3, sl m, knit to m, sl m, p1, sl m, knit to m, sl m, k3. Rep Rows 1-2, 7 more times, ending with a RS row – 28 sts inc'd, 127 sts.

Break yarn. Slide sts to other end of ndl.

### Eyelet Stripe 2

**Row 1 (WS)** With color B: K3, sl m, purl to m, sl m, p1, sl m, purl to m, sl m, k3.

**Row 2 (RS):** With color B: K3, sl m, yo, p1, \* yo, p2tog; rep from \* to m, yo, sl m, k1, sl m, yo, p1, \* yo, p2tog; rep from \* to m, yo, sl m, k3. – 4 sts inc'd, 131 sts.

**Row 3:** K3, sl m, knit to m, sl m, p1, sl m, knit to m, sl m, k3.

**Row 4:** K3, sl m, yo, knit to m, yo, sl m, k1, sl m, yo, knit to m, yo, sl m, k3 – 4 sts inc'd, 135 sts.

Break yarn. Slide sts to other end of ndl

### MC Stripe 2

**Row 1 (RS):** K3, sl m, yo, knit to m, yo, sl m, k1, sl m, yo, knit to m, yo, sl m, k3 – 4 sts inc'd, 139 sts.

**Row 2 (WS):** K3, sl m, knit to m, sl m, p1, sl m, knit to m, sl m, k3. Rep Rows 1-2, 16 more times, ending with a RS row – 64 sts inc'd, 203 sts.

Break yarn. Slide sts to other end of ndl.

### Eyelet Stripe 3

**Row 1 (WS)** With color B: K3, sl m, purl to m, sl m, p1, sl m, purl to m, sl m, k3.

**Row 2 (RS):** With color B: K3, sl m, yo, p1, \* yo, p2tog; rep from \* to m, yo, sl m, k1, sl m, yo, p1, \* yo, p2tog; rep from \* to m, yo, sl m, k3. – 4 sts inc'd, 207 sts.

**Row 3:** K3, sl m, knit to m, sl m, p1, sl m, knit to m, sl m, k3.

**Row 4:** K3, sl m, yo, knit to m, yo, sl m, k1, sl m, yo, knit to m, yo, sl m, k3 – 4 sts inc'd, 211 sts.

Break yarn. Slide sts to other end of ndl

### MC Stripe 3

**Row 1 (RS):** K3, sl m, yo, knit to m, yo, sl m, k1, sl m, yo, knit to m, yo, sl m, k3 – 4 sts inc'd, 215 sts.

*Knit. Relax. Smile. Repeat!*

2017 © Universal Yarn, Inc.

All rights reserved.

[www.universalyarn.com](http://www.universalyarn.com)

This pattern may not be reproduced for business, trade or sale.

**Row 2 (WS):** K3, knit to m, sl m, p1, sl m, knit to m, sl m, k3. Rep Rows 1-2, 7 more times, ending with a RS row – 28 sts inc'd, 243 sts.

Break yarn. Slide sts to other end of ndl.

#### Eyelet Stripe 4

**Row 1 (WS)** With color B: K3, sl m, purl to m, sl m, p1, sl m, purl to m, sl m, k3.

**Row 2 (RS):** With color B: K3, sl m, yo, p1, \* yo, p2tog; rep from \* to m, yo, sl m, k1, sl m, yo, p1, \* yo, p2tog; rep from \* to m, yo, sl m, k3. – 4 sts inc'd, 247 sts.

**Row 3:** K3, sl m, knit to m, sl m, p1, sl m, knit to m, sl m, k3.

**Row 4:** K3, sl m, yo, knit to m, yo, sl m, k1, sl m, yo, knit to m, yo, sl m, k3 – 4 sts inc'd, 251 sts.

Break yarn. Slide sts to other end of ndl

#### MC Stripe 4

**Row 1 (RS):** K3, sl m, yo, knit to m, yo, sl m, k1, sl m, yo, knit to m, yo, sl m, k3 – 4 sts inc'd, 255 sts.

**Row 2 (WS):** K3, sl m, knit to m, sl m, p1, sl m, knit to m, sl m, k3. Rep Rows 1-2, 8 more times, ending with a RS row – 32 sts inc'd, 287 sts. Break yarn. Slide sts to other end of ndl.

#### Lace Border

*Note: Maintain increased sts in Lace patt as est'd. If there are not enough sts to work corresponding increases or decreases in patt, work these sts in St st instead.*

**Set-up Row (WS):** With color B: K3, sl m, purl to m, sl m, p1, sl m, purl to m, sl m, k3.

**Row 1 (RS):** K3, sl m, yo, work Row 1 of Lace patt to m, yo, sl m, k1, sl m, yo, work Row 1 of Lace patt to m, yo, sl m, k3 – 4 sts inc'd, 291 sts.

**WS Rows 2 & 4:** With color B: K3, sl m, \* work corresponding rows of Lace patt to m, sl m, p1, sl m, work corresponding rows of Lace patt to m, sl m, k3.

**Row 3:** K3, sl m, yo, work Row 3 of Lace patt to m, yo, sl m, k1, sl m, yo, work Row 3 of Lace patt to m, yo, sl m, k3 – 4 sts inc'd, 295 sts.

Rep Rows 1-4, 3 more times – 24 sts inc'd, 319 sts.

#### Garner Edge

**Row 1:** K3, sl m, yo, knit to m, yo, sl m, k1, sl m, yo, knit to m, yo, sl m, k3 – 4 sts inc'd, 323 sts.

**Row 2:** K3, sl, m, k to m, sl m, k1, sl m, k to m, sl m, k3.

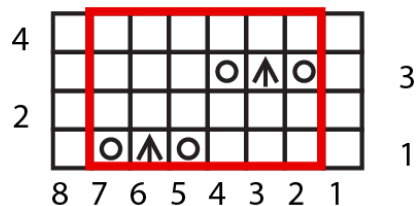
Repeat Rows 1-2 of Garner edge once, then repeat Row 1, 1 more time – 8 sts inc'd, 331 sts. Loosely bind off sts .





#### FINISHING

Weave in ends and block using blocking wires.

#### Abbreviations

<b>beg</b>	begin(ning)
<b>cont</b>	continue
<b>est'd</b>	established
<b>inc'd</b>	increased
<b>k</b>	knit
<b>m</b>	marker
<b>p</b>	purl
<b>k2tog</b>	knit 2 together
<b>k3tog</b>	knit 3 together
<b>patt</b>	pattern
<b>pm</b>	place marker
<b>rep</b>	repeat
<b>st(s)</b>	stitch(es)
<b>sl</b>	slip
<b>yo</b>	yarn over



-  knit on RS, purl on WS
-  yarn over
-  k3tog
-  repeat

*Knit. Relax. Smile. Repeat!*

2017 © Universal Yarn, Inc.

All rights reserved.

www.universalyarn.com

This pattern may not be reproduced for business, trade or sale.