



PATTERN COLLECTION

Accessories



Fluoresce

Designed by Rachel Brockman

SKILL

Knitting

DIFFICULTY

Easy

SIZES

Adult Small (Medium, Large)

Shown in Adult Small size.

FINISHED MEASUREMENTS

Brim Circumference: 18½ (21½, 24½)''

Stretches to approx. 21½ (24½, 27½)''

Height: 7½ (8¾, 9)''

MATERIALS

[Rico Design Essentials Merino Plus DK](#)
(50% superwash merino, 50% acrylic;
50g/136 yds)

- 001 Cream - 1 (2, 2) ball(s)

[Rico Design Creative Make it Neon Thread](#) (100% polyester; 1082 yds)

- 003 Green - 1 spool (all sizes)

Needle: US Size 4 (3.5 mm) 16'' circular
US Size 6 (4 mm) 16'' circular and set of
DPNs (or your preferred needle for
knitting small circumferences) *or size
needed to obtain gauge*

Notions: Stitch markers, tapestry needle,
cable needle (cn)

GAUGE

26 sts x 29 rnds = 4'' in Cable Pattern
with larger needles, after blocking

Save time, check your gauge.

Knit, Relax, Smile, Repeat!

2023 © Universal Yarn, Inc.

www.universalyarn.com

All rights reserved. This pattern may not be reproduced for business, trade or sale.

Questions? Contact patterns@universalyarn.com

PATTERN NOTES

Add a touch of electricity to your autumn accessories with Fluoresce! This classic cabled beanie is fresh and playful thanks to the neon marled fabric. It is knitted holding a strand each of soft, supple *Essentials Merino Plus DK* and *Creative Make it Neon Thread* together as one strand throughout.

This hat is knit seamlessly in the round from the bottom up. The Brim, Cable Pattern, and Crown Shaping are also charted for your convenience.

Please note that the Adult Small size took up nearly the entire ball of Rico Essentials Merino Plus DK. You may need to unravel your swatch, or you may wish to purchase an additional ball as insurance.

STITCH GUIDE

4x3 Right Cross (RC): Slip 3 sts to cn and hold in back, k4 from left ndl, k3 from cn.

4x3 Left Cross (LC): Slip 4 sts to cn and hold in front, k3 from left ndl, k4 from cn.

3x2 Right Cross (RC): Slip 2 sts to cn and hold in back, k3 from left ndl, k2 from cn.

3x2 Left Cross (LC): Slip 3 sts to cn and hold in front, k2 from left ndl, k3 from cn.

Cable Pattern

(multiple of 20 sts)

Rnds 1-4: * K1 tbl, p2, k7, p1, k7, p2; rep from * to end.

Rnd 5: * K1 tbl, p2, 4x3 RC, p1, 4x3 LC, p2; rep from * to end.

Rnds 6-8: * K1 tbl, p2, k7, p1, k7, p2; rep from * to end.

Rep Rnds 1-8 for patt.

PATTERN BEGINS

HAT

Brim

With smaller 16" circ ndl and holding yarns A and B together as one strand, cast on 120 (140, 160) sts. PM and join to knit in the rnd, being careful not to twist.

Rnds 1-12 (12, 14): * K1 tbl, p2, [k1 tbl, p1] 7 times, k1 tbl, p2; rep from * to end.

Change to larger 16" circ ndl.



Main Hat

Work Rnds 1-8 of Cable Pattern 3 (4, 4) times, then work Rnds 1-7, one more time. Cable Patt will be repeated 6 (7, 8) times across each rnd.

Shape Crown

Note: Change to DPNs or your preferred ndl for knitting small circumferences when there are too few sts to fit comfortably on 16" circ ndl.

Rnd 1: K1 tbl, p2, ssk, k5, p1, k5, k2tog, p2; rep from * to end - 12 (14, 16) sts dec'd, 108 (126, 144) sts rem.

Rnd 2: * K1 tbl, p2, k6, p1, k6, p2; rep from * to end.

Rnd 3: K1 tbl, p2, ssk, k4, p1, k4, k2tog, p2; rep from * to end - 12 (14, 16) sts dec'd, 96 (112, 128) sts rem.

Rnd 4: * K1 tbl, p2, 3x2 RC, p1, 3x2 LC, p2; rep from * to end.

Rnd 5: * K1 tbl, p2, ssk, k3, p1, k3, k2tog, p2; rep from * to end - 12 (14, 16) sts dec'd, 84 (98, 112) sts rem.

Rnd 6: * K1 tbl, p2, k4, p1, k4, p2; rep from * to end.

Rnd 7: * K1 tbl, p2, ssk, k2, p1, k2, k2tog, p2; rep from * to end - 12 (14, 16) sts dec'd, 72 (84, 96) sts rem.

Rnd 8: * K1 tbl, p2, k3, p1, k3, p2; rep from * to end.

Rnd 9: * K1 tbl, ssp, ssk, k1, p1, k1, k2tog, p2tog; rep from * to end - 24 (28, 32) sts dec'd, 48 (56, 64) sts rem.

Knit, Relax, Smile, Repeat!

2023 © Universal Yarn, Inc.

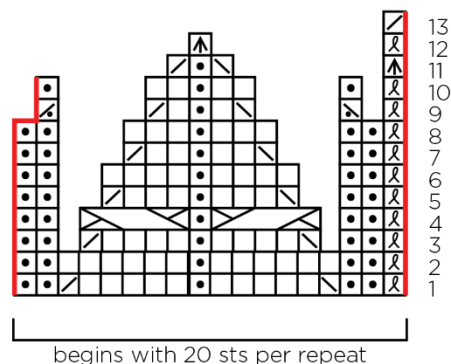
www.universalyarn.com

All rights reserved. This pattern may not be reproduced for business, trade or sale.

Questions? Contact patterns@universalyarn.com

Rnd 10: * K1 tbl, [p1, k2] 2 times, p1; rep from * 5 (6, 7) more times, k1 tbl, [p1, k2] 2 times, slip final st to right ndl, remove bor marker, slip final st back to the left ndl, replace bor marker.
Rnd 11: * S2KP2, ssk, p1, k2tog; rep from * to end - 24 (28, 32) sts dec'd, 24 (28, 32) sts rem.
Rnd 12: * K1 tbl, S2KP2; rep from * to end - 12 (14, 16) sts dec'd, 12 (14, 16) sts rem.
Rnd 13: * K2tog; rep from * to end - 6 (7, 8) sts dec'd, 6 (7, 8) sts rem. Break yarn leaving approx. 8" tail. Thread tail through rem live sts and pull taut to close.

Crown Shaping



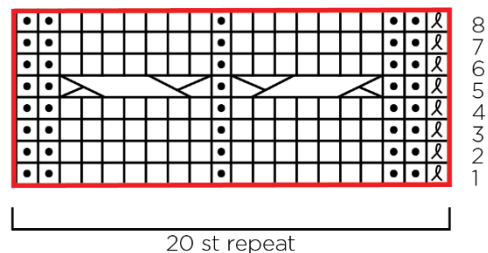
FINISHING

Gently wash and block to finished measurements. Weave in ends.

Abbreviations

* indicates a repeat section
bor beginning of round
circ circular
cn cable needle
dec('d) decrease(d)
dpn(s) double pointed needle(s)
k knit
k2tog knit 2 stitches together (1 st dec'd)
LC left cross
m marker
ndl needle
p purl
p2tog purl 2 sts together (1 st dec'd)
patt pattern
pm place marker
RC right cross
rem remain(ing)
rep repeat
rnd(s) round(s)
S2KP2 slip 2 stitches as if to knit 2 together, knit 1, pass 2 slipped stitches over knit stitch; centered double decreases
ssk slip next 2 sts individually knitwise, slip them back to left needle in this position, knit them together through the back loops (1 st dec'd)
ssp slip next 2 sts individually knitwise, slip them back to left needle in this position, purl them together through the back loops (1 st dec'd)
st(s) stitch(es)
tbl through the back loop(s)

Cable Pattern



Brim Pattern



Key

- pattern repeat
- knit
- purl
- k k1 tbl
- / ssk
- \ k2tog
- / ssp
- / p2tog
- / S2KP2
- 4x3 RC
- 4x3 LC
- 3x2 RC
- 3x2 LC

Knit, Relax, Smile, Repeat!

2023 © Universal Yarn, Inc.

www.universalyarn.com

All rights reserved. This pattern may not be reproduced for business, trade or sale.

Questions? Contact patterns@universalyarn.com