



Pattern Collection: Accessories



Flourish Scarf

Designed by Universal Yarn Design Team

SIZE

One Size

FINISHED MEASUREMENTS

Length: 94"

Width: 9¼"

MATERIALS

Universal Yarn *Uptown Super Bulky*
(100% anti-pilling acrylic; 100g/87 yds)

- 423 Mint Green – 4 skeins

Needles: US Size 13 (9 mm) straight or your preferred needle for working flat or size needed to obtain gauge

Notions: Tapestry needle

GAUGE

9 sts x 13 rows = 4" in Lace pattern

Save time, check your gauge.

Knit. Relax. Smile. Repeat!

2020 © Universal Yarn, Inc.

All rights reserved.

www.universalyarn.com

This pattern may not be reproduced for business, trade or sale.

PATTERN NOTES

The long scarf will keep you cozy all winter long. Its dramatic length is great for wrapping around your neck at least one time. It features a lovely, oversized lace stitch pattern. At just 21 stitches across, the Flourish Scarf works up unbelievably fast.

This scarf is knit flat from the bottom up.

STITCH GUIDE

Lace

(Begins as panel of 21 sts)

Row 1 (RS): K1, [ssk, yo] 2 times, k2, k2tog, k1, p1, k1, ssk, k2, [yo, k2tog] 2 times, k1 – 2 sts dec'd, 19 sts rem.

Row 2 (WS): K2, p7, k1, p7, k2.

Row 3: K2, yo, ssk, yo, k1, yo, k2, k2tog, p1, ssk, k2, yo, k1, yo, k2tog, yo, k2 – 2 sts inc'd, 21 sts.

Row 4: K2, p8, k1, p8, k2.

Row 5: K2, yo, ssk, [yo, k3] 2 times, p1, [k3, yo] 2 times, k2tog, yo, k2 – 4 sts inc'd, 25 sts.

Row 6: K2, p10, k1, p10, k2.

Row 7: K2, yo, ssk, yo, k5, yo, k3, p1, k3, yo, k5, yo, k2tog, yo, k2 – 4 sts inc'd, 29 sts.

Row 8: K2, p12, k1, p12, k2.

Row 9: K1, [ssk, yo] 2 times, k2, k3tog, k4, p1, k4, sssk, k2, [yo, k2tog] 2 times, k1 – 4 sts dec'd, 25 sts rem.

Row 10: Rep Row 6.

Row 11: K1, [ssk, yo] 2 times, k2, k2tog, k3, p1, k3, ssk, k2, [yo, k2tog] 2 times, k1 – 2 sts dec'd, 23 sts rem.

Row 12: K2, p9, k1, p9, k2.

Row 13: K1, [ssk, yo] 2 times, k2, k2tog, k2, p1, k2, ssk, k2, [yo, k2tog] 2 times, k1 – 2 sts dec'd, 21 sts rem.

Row 14: Rep Row 4.

Rep Rows 1-14 for patt.

SCARF

Lower Edge

Cast on 21 sts.

Rows 1-4: Knit.

Lace Section

Row 1 (RS): Work Row 1 of Lace patt to end.

Row 2 (WS): Work Row 2 of Lace patt to end.

Cont as est'd through Row 14 of Lace patt, then rep Rows 1-14 of patt, 20 more times.

Upper Edge

Rows 1-4: Knit. Bind off all sts kwise.

FINISHING

Gently wash and block to finished measurements. Weave in ends.

Abbreviations

dec('d)	decrease(d)
inc('d)	increase(d)
k	knit
k2tog	knit 2 stitches together (1 st dec'd)
k3tog	knit 3 stitches together (2 sts dec'd)
kwise	knitwise
meas	measures
p	purl
patt	pattern
rem	remain(ing)
rep	repeat
RS	right side
ssk	slip next 2 sts individually knitwise, slip them back to left needle in this position, knit them together through the back loops (1 st dec'd)
sssk	slip next 3 sts individually knitwise, slip them back to left needle in this position, knit them together through the back loops (2 sts dec'd)
st(s)	stitch(es)
WS	wrong side
yo	yarn over

Knit. Relax. Smile. Repeat!

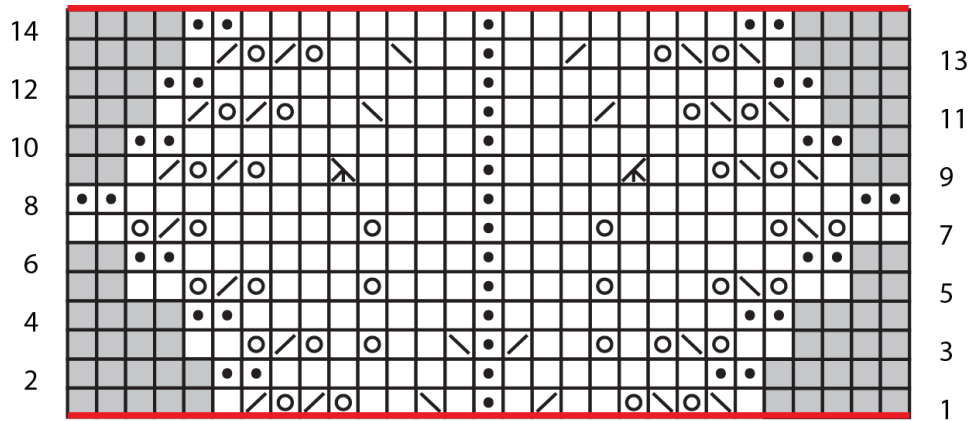
2020 © Universal Yarn, Inc.

All rights reserved.










www.universalyarn.com

This pattern may not be reproduced for business, trade or sale.

Lace



Key

- | | | | |
|--|------------------------|---|-------|
|  | pattern repeat |  | ssk |
|  | no stitch |  | k2tog |
|  | knit on RS, purl on WS |  | sssk |
|  | purl on RS, knit on WS |  | k3tog |
|  | yo | | |

Knit. Relax. Smile. Repeat!

2020 © Universal Yarn, Inc.

All rights reserved.

www.universalyarn.com

This pattern may not be reproduced for business, trade or sale.