



## PATTERN COLLECTION: *WOMEN*



### **Fleurette Lace Pullover**

Designed by Universal Yarn  
Design Team

### **SIZES**

Small (Medium, Large, 1X, 2X, 3X)  
Shown in Small size.

### **FINISHED MEASUREMENTS**

**Bust:** 32 (36, 40, 44, 48, 52)''

**Length:** 21¼ (21¾, 22¾, 23¼,  
24¼, 24½)''

### **MATERIALS**

**Universal Yarn Cotton Supreme  
DK** (100% cotton; 100g/231 yds)

- 702 Ecru – 4 (5, 6, 6, 7, 8)  
skeins

**Needles:** US Size 6 (4 mm)

straight needles *or size needed to  
obtain gauge*

US Size 4 (3.5 mm) straight  
needles

**Notions:** Tapestry needle, stitch  
holders, stitch markers, 2 spare  
US Size 4 (or smaller) dpns for  
picking up Neck sts

### **GAUGE**

21 sts x 28 rows = 4'' in St st with  
larger ndls

38 sts x 22 rows = 4'' in Twisted  
Rib with smaller ndls

**Save time, check your gauge.**

*Knit. Relax. Smile. Repeat!*

2013 © Universal Yarn, Inc.  
All rights reserved.  
[www.universalyarn.com](http://www.universalyarn.com)

This pattern may not be reproduced for business, trade or sale.

## STITCH GUIDE

### Fleurette Lace

*(begins with multiples of 6 sts + 5)*

**Row 1 (WS) and all WS rows:** Purl.

**Row 2:** K2, \* k1, yo, ssk, k1, k2tog, yo; rep from \*, end k3.

**Row 4:** K4, \* yo, k3; rep from \*, end k1.

**Row 6:** K2, k2tog, \* yo, ssk, k1, k2tog, yo, sl 2-k1-p2sso; rep from \*, end yo, ssk, k1, k2tog, yo, ssk, k2.

**Row 8:** K2, \* k1, k2tog, yo, k1, yo, ssk; rep from \*, end k3.

**Row 10:** Repeat Row 4.

**Row 12:** K2, \* k1, k2tog, yo, sl 2-k1-p2sso, yo, ssk; rep from \*, end k3.

Rep rows 1-12 for pattern.

### Twisted Rib *(even number of sts)*

**Row 1:** \* K1 tbl, p1; rep from \* to end.

Rep Row 1 for patt.

## PATTERN NOTES

When working increases or decreases in Fleurette Lace Pattern, if there are not enough stitches for a full pattern repeat, maintain these stitches in Stockinette stitch. This sweater is knit from the bottom up in pieces and is seamed.

## BACK

With larger ndls, cast on 83 (95, 105, 115, 125, 137) sts. Knit 6 rows.

### Establish Pattern

**Row 1 (WS):** P15 (18, 20, 22, 24, 27), pm, work Row 1 of Fleurette Lace across 53 (59, 65, 71, 77, 83) sts, pm, purl to end.

**Row 2:** Knit to m, sl m, work Row 2 of Fleurette Lace to m, sl m, knit to end. Cont in patt, keeping sts each side in St st, until Back meas 2½ (2½, 3, 3, 3½, 3½)”, ending with WS row.

### Shape Waist

**Dec row (RS):** K1, k2tog, work in patt to last 3 sts, ssk, k1 – 2 sts dec’d. Work 5 rows even in patt. Rep these 6 rows, 4 more times – 73 (85, 95, 105, 115, 127) sts rem. Work even in patt until Back meas 7½ (7½, 8, 8, 8½, 8½)”, ending with WS row.

**Inc row (RS):** K1, m1, work in patt to last st, m1, k1 – 2 sts inc’d. Work 3 rows even in patt. Rep these 4 rows, 4 more times – 83 (95, 105, 115, 125, 137) sts. Work even in patt until Back meas 13½ (13½, 14, 14, 14½, 14½)”, ending with WS row.

## Raglan Shaping

Bind off 5 (7, 7, 9, 9, 11) sts at beg of next 2 rows – 73 (81, 91, 97, 107, 115) sts rem.

**Dec row (RS):** K2, k2tog, work in patt to last 4 sts, ssk, k2 – 2 sts dec’d.

Rep Dec row every other RS row, 8 (7, 4, 3, -, -) more times, then Rep Dec row every RS row, 9 (13, 21, 24, 32, 35) times. Place rem 37 (39, 39, 41, 41, 43) sts on holder.

## FRONT

Work as for Back to Raglan Shaping.

## Raglan Shaping

Bind off 5 (7, 7, 9, 9, 11) sts at beg of next 2 rows – 73 (81, 91, 97, 107, 115) sts rem.

**Dec row (RS):** K2, k2tog, work in patt to last 4 sts, ssk, k2 – 2 sts dec’d.

Rep Dec row every other RS row, 8 (7, 4, 3, -, -) more times, then Rep Dec row every RS row, - (4, 12, 15, 23, 27) times.

## Shape Neck

Place marker on either side of center 13 (15, 15, 17, 17, 19) sts.

**Next row:** K2, k2tog, work in patt to first center marker, attach new ball of yarn, bind off center 13 (15, 15, 17, 17, 19) sts, work in patt to last 4 sts, ssk, k2. Place Left Front sts on holder.

*Knit. Relax. Smile. Repeat!*

2013 © Universal Yarn, Inc.  
All rights reserved.  
www.universalyarn.com

This pattern may not be reproduced for business, trade or sale.

### Right Front

**Row 1 (WS):** Work in patt to end.

**Row 2:** Bind off 3 sts, work in patt to last 4 sts, ssk, k2.

**Row 3:** Work in patt to end.

**Row 4:** Bind off 1 st, work in patt to last 4 sts, ssk, k2.

**Row 5:** Work in patt to end.

Rep Rows 4 & 5, 7 more times. K2tog, fasten off rem st.

### Left Front

**Row 1 (WS):** Bind off 3 sts, work in patt to end.

**Row 2:** K2, k2tog, work in patt to end.

**Row 3:** Bind off 1 st, work in patt to end.

**Row 4:** K2, k2tog, work in patt to end.

Rep Rows 3 & 4, 7 more times. P2tog, fasten off rem st.

### RIGHT SLEEVE

With smaller ndls, cast on 60 (66, 66, 72, 72, 78) sts.

#### Cuff

Work in Twisted Rib for 3".

**Dec row (RS):** K1, k2tog; rep from \* to end – 40 (44, 44, 48, 48, 52) sts rem. Switch to larger ndls. Purl a WS row.

#### Shape Sleeve

**Inc row (RS):** K1, m1, knit to last st, m1, k1 – 2 sts inc'd. Working in St st, rep Inc row every 6 (6, 4, 4, 4, 4) rows, 10 (14, 4, 2, 11, 11) more times, then rep Inc row every 8 (8, 6, 6, 6, 6) rows, 4 (1, 13, 15, 9, 9) times – 70 (76, 80, 84, 90, 94) sts. Work even in St st until Sleeve meas 19 (19, 19, 19½, 19½, 19½)" from cast-on edge, ending with WS row.

#### Raglan Shaping

Bind off 5 (7, 7, 9, 9, 11) sts at beg of next 2 rows – 60 (62, 66, 66, 72, 72) sts rem.

**Dec row (RS):** K2, k2tog, work in patt to last 4 sts, ssk, k2 – 2 sts dec'd.

Rep Dec row every other RS row, 5 (6, 6, 7, 6, 8) more times, then Rep Dec row every RS row, 15 (15, 17, 16, 20, 18) times. Place rem 18 sts on holder.

### LEFT SLEEVE

Work as for Right Sleeve. Do not break yarn. Leave sts on holder.

### FINISHING

#### Neck Edging

With spare smaller dpns, pick up (do not pick up and knit) 23 sts along each side of Front Neck shaping, and **13 (15, 15, 17, 17, 19) sts along center front neck.**

**Row 1 (RS):** With smaller ndls, work in Twisted Rib over 18 Left Sleeve sts, work in Rib over 23 sts from Left Front Neck, work in Rib over 12 (14, 14, 16, 16, 18) Center Front Neck sts, k1, m1p over last Center Neck st, work in Rib over 23 sts from Right Front Neck, **work in rib over 18 Right Sleeve sts**, work in Rib over 36 (38, 38, 40, 40, 42) Back Neck sts, k1, m1p over last Back Neck st. Cont in Twisted Rib for 6 more rows. Bind off all sts in patt.

Sew Raglan seams. Sew Sleeve and Side seams. Weave in ends and block.

*Knit. Relax. Smile. Repeat!*

2013 © Universal Yarn, Inc.  
All rights reserved.  
www.universalyarn.com

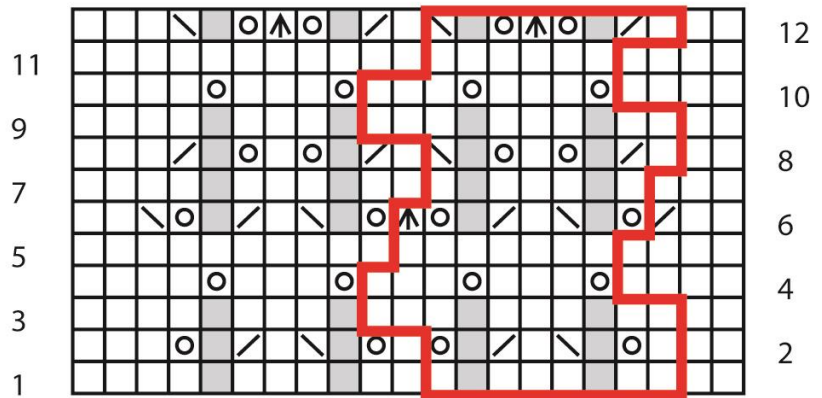
This pattern may not be reproduced for business, trade or sale.



Key

- knit on RS, purl on WS
- no stitch
- yo
- ssk
- k2tog
- sl 2-k1-p2sso
- patt rep

Fleurette Lace (multiples of 6 sts + 5)



*Knit. Relax. Smile. Repeat!*

2013 © Universal Yarn, Inc.  
All rights reserved.  
www.universalyarn.com

This pattern may not be reproduced for business, trade or sale.