



Pattern Collection: Women



Fireplace Cardigan

Designed by Amy Gunderson

SIZES

Extra Small (Small, Medium, Large, 1X, 2X)

FINISHED MEASUREMENTS

Bust: 36 (40½, 44½, 47½, 52, 56½)''

Length: 33½ (34, 34½, 35, 35¼, 35½)''

MATERIALS

Universal Yarn Amphora (60% acrylic, 20% mohair, 20% alpaca; 100 g/306 yds)

- 109 Lunar – 6 (6, 7, 8, 9, 9) balls

Needles: US Size 5 (3.75 mm) 32'', 48'' circular

Notions: Removable stitch markers, tapestry needle, cable needle (cn)

GAUGE

22 sts x 34 rows = 4'' in Waves patt

Save time, check your gauge

Knit. Relax. Smile. Repeat!

2015 © Universal Yarn, Inc.

All rights reserved.

www.universalyarn.com

This pattern may not be reproduced for business, trade or sale.

PATTERN NOTES

This cardigan is worked in pieces and seamed. Stitches for the collar are picked up all the way around the front opening and the collar is worked outward.

Always slip stitches in Waves pattern purlwise with yarn held to the wrong side of the work.

STITCH GUIDE

1x3 RPC: Sl next 2 sts to cn and hold in back, p1 from left ndl, k2 from cn.

1x3 LPC: Sl next st to cn and hold in front, k2 from left ndl, p1 from cn.

1x1 Ribbing

(odd number of sts)

Row 1 (RS): * K1, p1; rep from * to last st, k1.

Row 2 (WS): P1, * k1, p1; rep from * to end.

Rep Rows 1 & 2 for patt.

2x2 Ribbing (for Back & Sleeves)

(multiple of 4 sts + 3)

Row 1 (RS): K1, * k2, p2; rep from * to last 2 sts, k2.

Row 2 (WS): P2, * k2, p2; rep from * to last st, p1.
Rep Rows 1 & 2 for patt.

2x2 Ribbing (for Left Front)

(multiple of 4 sts + 1)

Row 1 (RS): K1, * p2, k2; rep from * to end.

Row 2 (WS): * P2, k2; rep from * to last st, p1.

Rep Rows 1 & 2 for patt.

2x2 Ribbing (for Right Front)

(multiple of 4 sts + 1)

Row 1 (RS): * K2, p2; rep from * to last st, k1.

Row 2 (WS): P1, * k2, p2; rep from * to end.

Rep Rows 1 & 2 for patt.

Waves

(multiple of 4 sts + 3)

Row 1 (RS): K3, * sl 1, k3; rep from * to end.

Row 2 (WS): * P3, sl 1; rep from * to last 3 sts, p3.

Row 3: K1, * 1x3 RPC, k1; rep from * to last 2 sts, k2.

Row 4: P1, * k1, p3; rep from * to last 2 sts, k1, p1.

Rows 5 & 6: Rep Rows 1 & 2.

Row 7: K3, * 1x3 LPC, k1; rep from * to end.

Row 8: P1, * k1, p3; rep from * to last 2 sts, k1, p1.

Rep Rows 1-8 for patt.

BACK

With shorter circ ndl, cast on 99 (111, 123, 131, 143, 155) sts. Work in 1x1 Ribbing patt until piece meas 4½" from cast-on edge, ending with WS row. Work in 2x2 Ribbing until piece meas 11½" from cast-on edge, ending with WS row. Rep Rows 1-8 of Waves patt until piece meas 26" from cast-on edge. Place removable markers at each edge to indicate bottom of armholes. Cont in patt until piece meas 7½ (8, 8½, 9, 9¼, 9½)" from markers, ending with WS row. Bind off all sts.

LEFT FRONT

With shorter circ ndl, cast on 41 (45, 53, 57, 61, 69) sts. Work in 1x1 Ribbing patt until piece meas 4½" from cast-on edge, ending with WS row. Work in 2x2 Ribbing for 2 rows.

Shape Front Opening

Dec row (RS): Work in patt to last 3 sts, ssk, k1 – 40 (44, 52, 56, 60, 68) sts rem. Work 23 more rows in 2x2 Ribbing. Rep Dec row – 39 (43, 51, 55, 59, 67) sts rem. Work even in 2x2 Ribbing until piece meas 11½" from cast-on edge, ending with WS row. Work in Waves patt, repeating Dec row every 24 (26, 22, 20, 22, 20) rows, 8 (7, 9, 10, 9, 11) more times – 31 (36, 42, 45, 50, 56) sts rem after all decs are complete.

At the same time, when piece meas 26" from cast-on edge, place removable markers at right side of piece to indicate bottom of armhole. Cont in patt, working rem Dec rows, until piece meas 7½ (8, 8½, 9, 9¼, 9½)" from marker, ending with WS row. Bind off all sts.

RIGHT FRONT

With shorter circ ndl, cast on 41 (45, 53, 57, 61, 69) sts. Work in 1x1 Ribbing patt until piece meas 4½" from cast-on edge, ending with WS row. Work in 2x2 Ribbing for 2 rows.

Knit. Relax. Smile. Repeat!

2015 © Universal Yarn, Inc.

All rights reserved.

www.universalyarn.com

This pattern may not be reproduced for business, trade or sale.

Shape Front Opening

Dec row (RS): K1, k2tog, work in patt to end – 40 (44, 52, 56, 60, 68) sts rem. Work 23 more rows in 2x2 Ribbing. Rep Dec row – 39 (43, 51, 55, 59, 67) sts rem. Work even in 2x2 Ribbing until piece meas 11½” from cast-on edge, ending with WS row. Work in Waves patt, repeating Dec row every 24 (26, 22, 20, 22, 20) rows, 8 (7, 9, 10, 9, 11) more times – 31 (36, 42, 45, 50, 56) sts rem after all decs are complete.

At the same time, when piece meas 26” from cast-on edge, place removable markers at left side of piece to indicate bottom of armhole. Cont in patt, working rem Dec rows, until piece meas 7½ (8, 8½, 9, 9¼, 9½)” from marker, ending with WS row. Bind off all sts.

SLEEVES

With shorter circ ndl, cast on 47 (47, 51, 51, 55, 55) sts. Work in 1x1 Ribbing patt until piece meas 4½” from cast-on edge, ending with WS row. Work in 2x2 Ribbing for 2 rows.

Increase for Sleeves

Inc row (RS): K1, m1, work in patt to last st, m1, k1 – 2 sts inc'd. Rep Inc row every 6 rows, 7 more times – 63 (63, 67, 67, 71, 71) sts. Work even in 2x2 Ribbing patt, if necessary, until piece meas 11½” from cast-on edge, ending with WS row. Working in Waves patt, rep Inc row every 4 (2, 2, 2, 2) rows, 7 (3, 5, 9, 9, 13) times, then rep Inc row every 6 (4, 4, 4, 4, 4) rows, 3 (10, 9, 7, 7, 5) times – 83 (89, 95, 99, 103, 107) sts. Work even in Waves patt until Sleeve meas 20 (20, 20½, 20½, 21, 21)” from cast-on edge, ending with WS row. Bind off all sts.

FINISHING

Block pieces to finished measurements. Sew shoulder seams. Sew Sleeves to Armholes, centered between removable markers. Sew Sleeve and side seams.

Pockets (make 2)

With shorter circ ndl, cast on 28 sts. **Row 1 (WS):** P3, * k2, p2; rep from * to last st, p1. **Row 2 (RS):** Sl 1 pwise wyib, * k2, p2; rep from * to last 3 sts, k2, sl 1 pwise wyib.

Rep Rows 1 & 2 until Pocket meas 5” from cast-on edge, ending with WS row. Bind off all sts. Sew Pockets to Fronts, with bottom of Pocket approx. 6½” from cast-on edge of Fronts.

Front Edging

With longer circ ndl and RS facing, beg at lower Right Front, pick up and knit 185 (188, 190, 193, 194, 196) sts evenly along Right Front to Neck edge, 38 (40, 40, 42, 44, 44) sts along Back Neck, and 185 (188, 190, 193, 194, 196) sts evenly along Left Front – 408 (416, 420, 428, 432, 436) sts.

Row 1 (WS): P3, * k2, p2; rep from * to last st, p1.

Row 2 (RS): Sl 1 pwise wyib, * k2, p2; rep from * to last 3 sts, k2, sl 1 pwise wyib.

Rep Rows 1 & 2 until Edging meas 4” from pick-up edge, ending with WS row. Bind off all sts. Block Edging.

Weave in ends.

Abbreviations

beg	begin(ning)
bet	between
circ	circular
cn	cable needle
cont	continue
dec('d)	decrease(d)
inc('d)	increase(d)
k	knit
k2tog	knit 2 stitches together (1 st dec'd)
kwise	knitwise
LH	left hand
m	marker
m1	insert left needle from front to back under horizontal strand of yarn lying between st just worked and next st, knit or purl this st through the back loop (1 st inc'd)
meas	measures
ndl	needle
patt	pattern
p	purl
pm	place marker
pwise	purlwise

Knit. Relax. Smile. Repeat!

2015 © Universal Yarn, Inc.

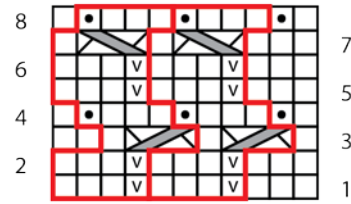
All rights reserved.

www.universalyarn.com







This pattern may not be reproduced for business, trade or sale.

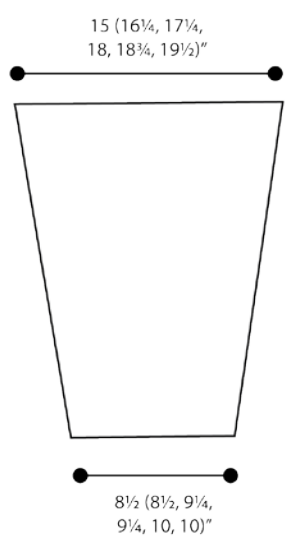
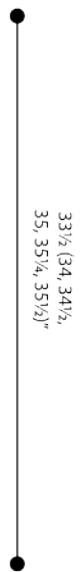
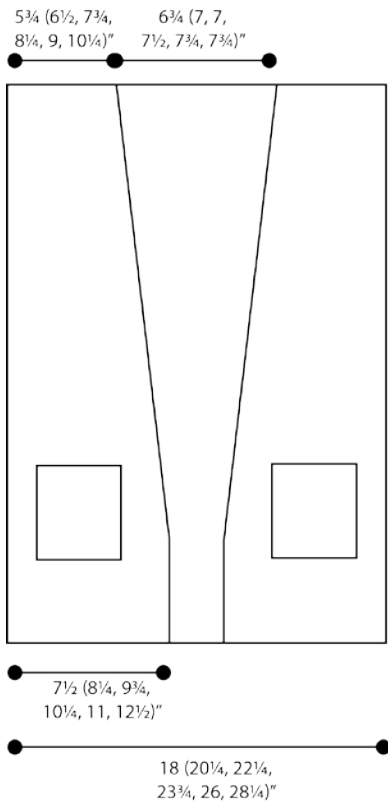
rem remain(ing)
rep repeat
RH right hand
RS right side
ssk slip next 2 sts individually knitwise, slip them back to left needle in this position, knit them together through the back loops (1 st dec'd)
st(s) stitch(es)
tbl through the back loop(s)
tog together
WS wrong side
wyib with yarn held in back
wyif with yarn held in front

Waves



Key

-  knit on RS, purl on WS
-  purl on RS, knit on WS
-  sl 1 pwise with yarn to the WS of the work
-  1x2 RPC
-  1x2 LPC
-  pattern repeat



Knit. Relax. Smile. Repeat!

2015 © Universal Yarn, Inc.
 All rights reserved.
www.universalyarn.com

This pattern may not be reproduced for business, trade or sale.