



## PATTERN COLLECTION

### Accessories



#### Firecracker Shawl

Designed by Aubrey Busek

#### SKILL

Knitting

#### DIFFICULTY

Easy

#### SIZES

One Size

#### FINISHED MEASUREMENTS

Wingspan: 48"

Depth: 23"

#### MATERIALS

[Universal Yarn Sugar Saki](#) (50% superwash merino, 25% rayon from bamboo, 25% nylon; 100g/459 yds)

- 505 Popsicle - 1 ball

**Needle:** US Size 6 (4 mm) 40" circular or longer (to accommodate large number of sts) *or size needed to obtain gauge*

**Notions:** Stitch markers, tapestry needle

#### GAUGE

20 sts x 28 rows = 4" in Stockinette stitch (St st), after blocking.

Save time, check your gauge.

Knit, Relax, Smile, Repeat!

2023 © Universal Yarn, Inc.

[www.universalyarn.com](http://www.universalyarn.com)

All rights reserved. This pattern may not be reproduced for business, trade or sale.

Questions? Contact [patterns@universalyarn.com](mailto:patterns@universalyarn.com)

## PATTERN NOTES

What's better than a one-skein shawl? A one-skein shawl in our cheerful Sugar Saki! This highly addictive and easy-to-knit project gets an extra zing from the variegated and joyful colors of this drapey yarn.

This shawl is knit flat from the top down beginning with a garter tab. Please note that this pattern is written to make the most of one skein of Sugar Saki. You may need to unravel your swatch to use in the final piece.

## STITCH GUIDE

### Eyelet Lace

(multiple of 2 sts)

**Row 1 (RS):** \* K2tog, yo; rep from \* to end.

**WS Rows 2-12:** Purl to end.

**Row 3:** \* Yo, k2tog; rep from \* to end.

**Row 5:** Purl to end.

**Row 7:** \* Ssk, yo; rep from \* to end.

**Row 9:** \* Yo, ssk; rep from \* to end.

**Row 11:** Purl to end.

Rep Rows 1-12 for patt.

## PATTERN BEGINS

### SHAWL

#### Starting Tab

Cast on 3 sts. Knit 12 rows in garter st.

**Set-Up Row 1 (RS):** K3, rotate work 90 degrees, pick up and knit 5 sts from side of tab, pick up and knit 3 sts from cast-on edge – 11 sts.

**Set-Up Row 2 (WS):** K3, pm, p2, pm, p1, pm, p2, pm, k3.

#### Main Shawl

*Note: This section is also charted for your convenience.*

**Row 1 (RS):** K3, sl m, k2, sl m, k1, sl m, k2, sl m, k3.

**Row 2 (WS):** K3, sl m, p2, sl m, p1, sl m, p2, sl m, k3.

**Row 3:** K3, sl m, yo, knit to m, yo, sl m, k1, sl m, yo, knit to m, yo, sl m, k3 – 4 sts inc'd, 15 sts.

**WS Rows 4-14:** K3, sl m, [purl to m, sl m] 3 times, k3.

**RS Rows 5-13:** Rep Row 3 – 20 sts inc'd, 35 sts.

**Row 15:** K3, sl m, yo, \* k2tog, yo; rep from \* to 2 sts bef m, k2tog, [yo] 2 times, sl m, k1, sl m, yo, \* k2tog, yo; rep from \* to 2 sts bef m, k2tog, [yo] 2 times, sl m, k3 – 4 sts inc'd, 39 sts.

**Row 16:** K3, sl m, [k1, p1] into double yarn over, purl to m, sl m, p1, sl m, [k1, p1] into double yarn over, purl to m, sl m, k3.

**Row 17:** K3, sl m, yo, k1, \* yo, k2tog; rep from \* to 1 st bef m, k1, yo, sl m, k1, sl m, yo, k1, \* yo, k2tog; rep from \* to 1 st bef m, k1, yo, sl m, k3 – 4 sts inc'd, 43 sts.

**WS Rows 18-26:** K3, sl m, [purl to m, sl m] 3 times, k3.

**Row 19:** K3, sl m, yo, purl to m, yo, sl m, k1, sl m, yo, purl to m, yo, sl m, k3 – 4 sts inc'd, 47 sts.

**Row 21:** K3, sl m, yo, k1, \* ssk, yo; rep from \* to 1 st bef m, k1, yo, sl m, k1, sl m, yo, k1, \* ssk, yo; rep from \* to 1 st bef m, k1, yo, sl m, k3 – 4 sts inc'd, 51 sts.

**Row 23:** K3, sl m, yo, k2, \* yo, ssk; rep from \* to m, yo, sl m, k1, sl m, yo, k2, \* yo, ssk; rep from \* to m, yo, sl m, k3 – 4 sts inc'd, 55 sts.

**Row 25:** K3, sl m, yo, purl to m, yo, sl m, k1, sl m, yo, purl to m, yo, sl m, k3 – 4 sts inc'd, 59 sts.

Rep Rows 5-26, 5 more times, then rep Rows 5-14, one more time – 240 sts inc'd, 299 sts.

Bind off all sts kwise using your preferred elastic bind-off method.

## FINISHING

Gently wash and block to finished measurements. Weave in ends.

## ABBREVIATIONS

<b>bef</b>	before
<b>garter st</b>	knit every row
<b>inc('d)</b>	increase(d)
<b>k</b>	knit
<b>k2tog</b>	knit 2 stitches together (1 st dec'd)
<b>kwise</b>	knitwise
<b>m</b>	marker
<b>ndl</b>	needle
<b>p</b>	purl
<b>patt</b>	pattern
<b>pm</b>	place marker
<b>rep</b>	repeat
<b>sl</b>	slip
<b>ssk</b>	slip next 2 sts individually knitwise, slip them back to left needle in this position, knit them together through the back loops (1 st dec'd)
<b>st(s)</b>	stitch(es)
<b>WS</b>	wrong side
<b>yo</b>	yarn over

Knit, Relax, Smile, Repeat!

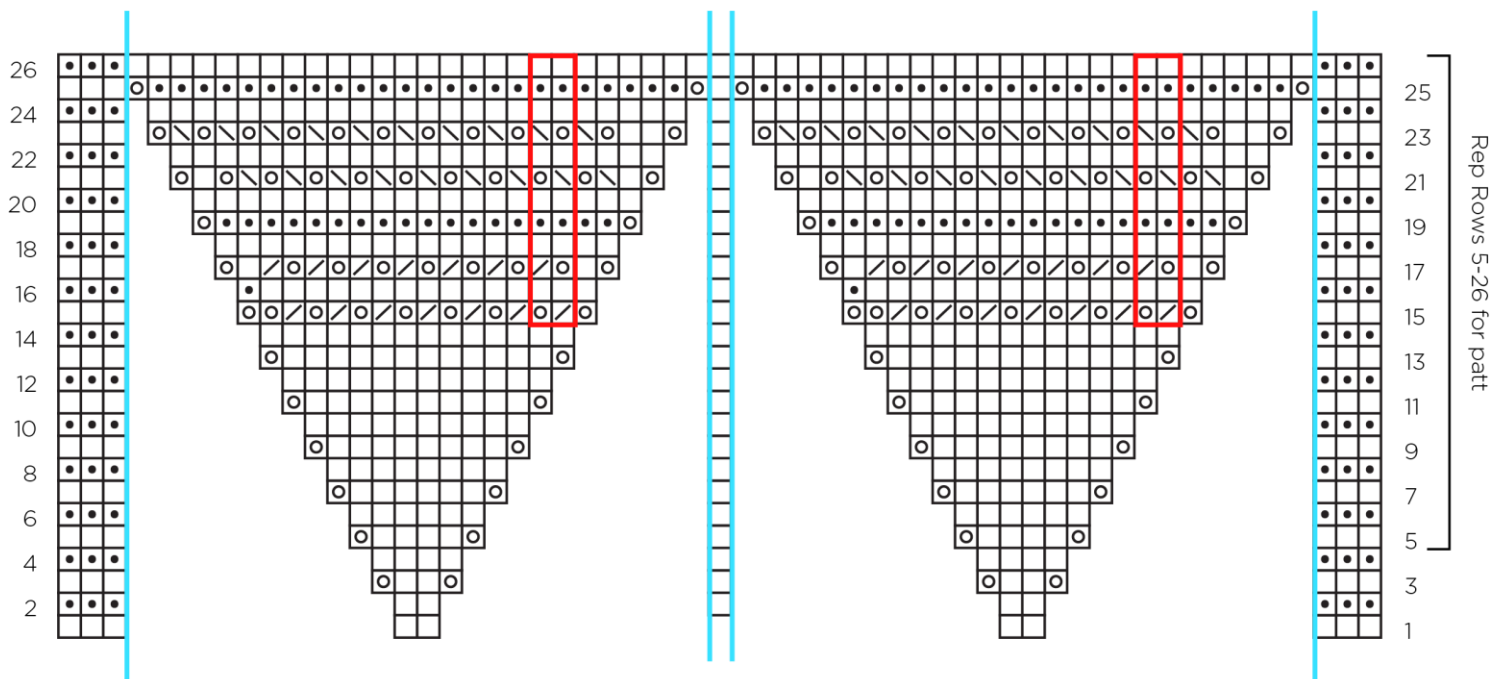
2023 © Universal Yarn, Inc.

[www.universalyarn.com](http://www.universalyarn.com)

All rights reserved. This pattern may not be reproduced for business, trade or sale.

Questions? Contact [patterns@universalyarn.com](mailto:patterns@universalyarn.com)

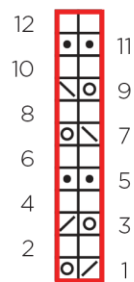
## Shawl Chart



### Key

- indicates marker
- pattern repeat
- knit on RS, purl on WS
- purl on RS, knit on WS
- yarn over
- / k2tog
- \ ssk

### Eyelet Lace



Knit, Relax, Smile, Repeat!

2023 © Universal Yarn, Inc.

[www.universalyarn.com](http://www.universalyarn.com)

All rights reserved. This pattern may not be reproduced for business, trade or sale.

Questions? Contact [patterns@universalyarn.com](mailto:patterns@universalyarn.com)