



Pattern Collection: Accessory



Father's Day Tie

Designed by Rachel Brockman

SIZES

One Size

FINISHED MEASUREMENTS

Length: 52½"

Width: 2¾" (at widest point)

MATERIALS

Universal Yarn *Deluxe DK Tweed Superwash* (90% superwash wool, 7% acrylic, 3% viscose; 100g/284 yds)

- 413 Smoke – 1 ball

Needles: US Size 6 (4 mm) straight or size needed to obtain gauge

Notions: Tapestry needle

GAUGE

30 sts x 40 rows = 4" in Linen Stitch

Save time, check your gauge.

Knit, Relax, Smile, Repeat!

2018 © Universal Yarn, Inc.

All rights reserved.

www.universalyarn.com

This pattern may not be reproduced for business, trade or sale.

PATTERN NOTES

Pair a classic looking yarn like Deluxe DK Tweed with a classic men's accessory, and you've got yourself a winner. The tweedy and rustic nature of the yarn gives a manly yet casual look to this stylish neckwear. Slipped stitches along each edge give this tie a polished feel, while a single slipped stockinette spine adds just the right amount of detail. Because this tie is knit, it provides a bit of stretchiness around the neck – perfect for the man in your life who doesn't like to wear ties.

This tie is worked flat from point to point, beginning and ending with just three stitches. Slip all stitches purlwise.

STITCH GUIDE

Linen Stitch

(multiple of 2 sts)

Row 1 (RS): * Sl 1 wyif, k1; rep from * to end.

Row 2 (WS): * Sl 1 wyib, p2; rep from * to end.
Rep Rows 1-2 for patt.

TIE

Cast on 3 sts.

Beginning Tip

Setup Row (WS): Sl 1 wyif, p1, k1.

Row 1 (RS): Sl 1 wyif, m1R, sl 1 wyib, m1L, k1 – 2 sts inc'd, 5 sts.

Row 2: Sl 1 wyif, sl 1 wyib, p1, sl 1 wyib, k1.

Row 3: Sl 1 wyif, k1, m1R, sl 1 wyib, m1L, k2 – 2 sts inc'd, 7 sts.

Row 4: Sl 1 wyif, sl 1 wyib, p3, sl 1 wyib, k1.

Row 5: Sl 1 wyif, k1, sl 1 wyif, m1R, sl 1 wyib, m1L, sl 1 wyif, k2 – 2 sts inc'd, 9 sts.

Row 6: Sl 1 wyif, [sl 1 wyib, p1] 3 times, sl 1 wyib, k1.

Row 7: [Sl 1 wyif, k1] 2 times, m1R, sl 1 wyib, m1L, k1, sl 1 wyif, k2 – 2 sts inc'd, 11 sts.

Row 8: Sl 1 wyif, [sl 1 wyib, p1] 2 times, p1, [p1, sl 1 wyib] 2 times, k1.

Row 9: [Sl 1 wyif, k1] 2 times, sl 1 wyif, m1R, sl 1 wyib, m1L, [sl 1 wyif, k1] 2 times, k1 – 2 sts inc'd, 13 sts.

Row 10: Sl 1 wyif, [sl 1 wyib, p1] 5 times, sl 1 wyib, k1.

Even Section

Row 1 (RS): [Sl 1 wyif, k1] 3 times, sl 1 wyib, k1, [sl 1 wyif, k1] 2 times, k1.

Row 2 (WS): Sl 1 wyif, [sl 1 wyib, p1] 5 times, sl 1 wyib, k1.

Rep Rows 1-2 until piece meas 30¾" from cast-on edge, ending with a RS Row.

Increase Section

Note: Maintain pattern as established throughout increase section. If in doubt, knit the extra stitch.

Set-up Row (WS): Sl 1 wyif, [sl 1 wyib, p1] 2 times, sl 1 wyif, pm, p1, pm, [sl 1 wyif, p1] 2 times, sl 1 wyif, k1.

Inc Row (RS): Cont as est'd to m, m1R, sl m, sl 1 wyib, sl m, m1L, cont as est'd to end – 2 sts inc'd, 15 sts.

Note: Maintain inc'd sts in est'd patt.

Rep Inc Row every 48 rows, 3 more times – 18 sts. Cont as est'd, if necessary, until piece meas 50½" from cast-on edge, ending with a WS Row.

Decrease Section

Note: Maintain pattern as established throughout decrease section.

Dec Row (RS): Sl 1 wyif, ssk, cont as est'd to last 3 sts, k2tog, k1 – 2 sts dec'd, 21 sts rem.

Even Row (WS): Cont as est'd to end.

Rep Dec Row every RS row, 7 more times – 14 sts dec'd, 5 sts rem.

Next row (RS): Sl 1 wyif, sl 2-k1-p2sso, k1 – 2 sts dec'd, 3 sts rem.

Break yarn leaving approx 6" tail. Thread tail through rem 3 sts, pull taut and fast off.

FINISHING

Block piece to finished measurements. Weave in ends. Wrap it up and give it to a special father figure in your life.

Knit, Relax, Smile, Repeat!

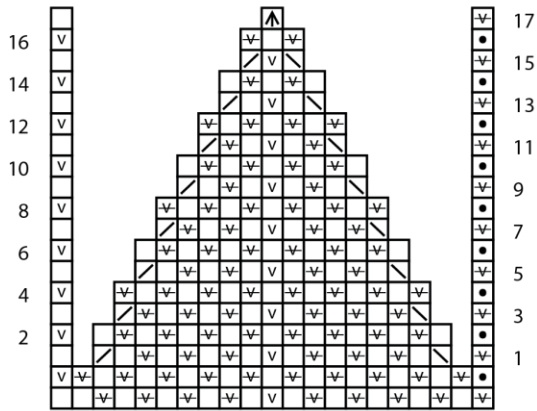
2018 © Universal Yarn, Inc.

All rights reserved.

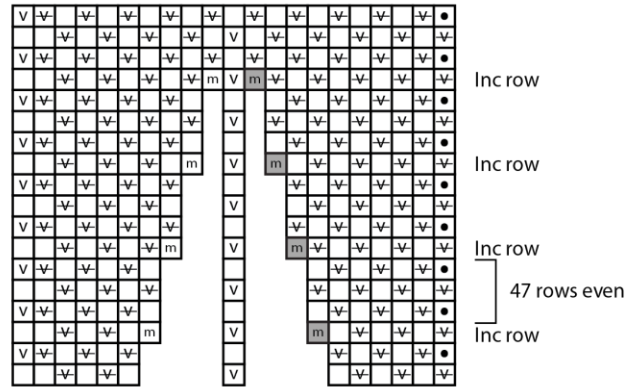
www.universalyarn.com

This pattern may not be reproduced for business, trade or sale.

Decrease Section



Increase Section



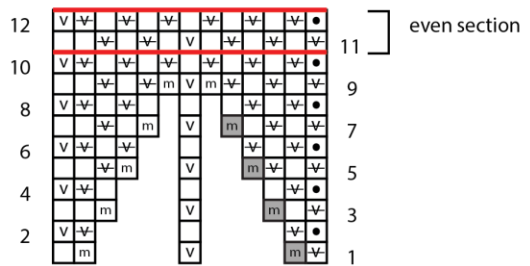
Key

- pattern repeat
- knit on RS, purl on WS
- purl on RS, knit on WS
- ↖ sl 1 wyif on RS, sl 1 wyib on WS
- ↘ sl 1 wyib on RS, sl 1 wyif on WS
- m m1L
- M m1R
- / ssk
- / k2tog
- ▲ sl 2-k1-p2sso

Linen Stitch



Beginning Tip



Abbreviations

- approx** approximately
- cont** continue
- dec('d)** decrease(d)
- est'd** established
- inc('d)** increase(d)
- k** knit
- k2tog** knit 2 stitches together (1 st dec'd)
- ewise** knitwise
- m1L** insert left needle from front to back under horizontal strand of yarn lying between st just worked and next st, knit or purl this st through the back loop (1 st inc'd)
- m1R** insert left needle from back to front under horizontal strand of yarn lying between st just worked and next st, knit or purl this st through the front loop (1 st inc'd)

- meas** measures
- ndl** needle
- p** purl
- psso** pass slipped st over
- ewise** purlwise
- rem** remain(ing)
- rep** repeat
- RS** right side
- sl** slip
- ssk** slip next 2 sts individually knitwise, slip them back to left needle in this position, knit them together through the back loops (1 st dec'd)
- st(s)** stitch(es)
- WS** wrong side
- wyib** with yarn held in back
- wyif** with yarn held in front

Knit, Relax, Smile, Repeat!

2018 © Universal Yarn, Inc.
All rights reserved.
www.universalyarn.com

This pattern may not be reproduced for business, trade or sale.