



PATTERN COLLECTION

Children



Fairway

Designed by Aubrey Busek

DIFFICULTY

Easy

SIZES

0-6 mo (6-12 mo, 12-18 mo, 2T, 4T)

Shown in 0-6 month size.

FINISHED MEASUREMENTS

Chest: 17 (18½, 20, 21½, 23)''

Length: 11 (12, 13, 14, 15)''

MATERIALS

Universal Yarn Bamboo Pop Sock (55% bamboo, 37% cotton, 8% PBT; 100g/492 yds)

- 614 Celestial (A) – 1 ball (all sizes)
- 612 Sky (B) – 1 ball (all sizes)
- 616 Fern (C) – 1 ball (all sizes)

Needle: US Size 3 (3.25 mm) 16'' circular and straight (or your preferred ndl for knitting flat) *or size needed to obtain gauge*

US Size 2 (2.75 mm) 16'' circular, set of DPNs (or your preferred ndl for knitting small circumferences in the rnd) and straight (or your preferred ndl for knitting flat)

Notions: Tapestry needle, stitch markers

GAUGE

26 sts x 40 rows/rnds = 4'' in Stockinette Stitch (St st) with larger ndl

Save time, check your gauge.

Knit, Relax, Smile, Repeat!

2021 © Universal Yarn, Inc.

www.universalyarn.com

All rights reserved. This pattern may not be reproduced for business, trade or sale.

Questions? Contact patterns@universalyarn.com

PATTERN NOTES

This grass green and sky blue pullover is perfect for a sunny day at the park. It features a healthy dose of color blocking and texture. The front and back are the same, so it's easy to wrangle onto a wiggly little one. Knit in Bamboo Pop Sock, this soft yarn is surprisingly sturdy and easy to care for, meaning it will hold up to the rough and tumble of any toddler. Better yet, this yarn is elastic, making it last longer while your little one grows.

This sweater is knit in the round from the bottom up. The front and back are separated at the underarms and worked flat. The shoulders are joined with a three-needle bind-off, and stitches are picked up for the neck edging. The sleeves are knit flat and seamed. Change colors as indicated in pattern.

STITCH GUIDE

K1, P1 Rib

(even number of sts, knit in the rnd)

Rnd 1: * K1, p1; rep from * to end.

Rep Rnd 1 for patt.

K1, P1 Rib

(even number of sts, knit flat)

Row 1 (RS): * K1, p1; rep from * to end.

Rep Row 1 for patt.

Alternating Seeds

(multiple of 10 sts, knit in the rnd)

Rnd 1: * [K1, p1] 2 times, k6; rep from * to end.

Rnd 2: * [K1, p1] 2 times, k1, p5; rep from * to end.

Rnd 3: * K6, [p1, k1] 2 times; rep from * to end.

Rnd 4: * P5, [k1, p1] 2 times, k1; rep from * to end.

Rep Rnds 1-4 for patt.

Alternating Seeds

(multiple of 10 sts, knit flat)

Row 1 (RS): * [K1, p1] 2 times, k6; rep from * to end.

Row 2 (WS): * K5, p1, [k1, p1] 2 times; rep from * to end.

Row 3: * K6, [p1, k1] 2 times; rep from * to end.

Row 4: * [P1, k1] 2 times, p1, k5; rep from * to end.

Rep Rows 1-4 for patt.

SWEATER

Hem

With smaller ndl and Color A, cast on 110 (120, 130, 140, 150) sts. PM and join to knit in the round, being careful not to twist.

Rnd 1: Work Rnd 1 of K1, P1 Rib to end.

Cont as est'd in K1, P1 Rib until piece meas approx. 1" from cast-on edge. Break Color A, join Color B. Change to larger ndl.

Main Body

Rnd 1: Work Rnd 1 of Alternating Seeds to end.

Patt will be repeated 11 (12, 13, 14, 15) times across each rnd.

Cont as est'd through Rnd 4 of Alternating Seeds, then rep Rnds 1-4 until piece meas approx. 4½" from cast-on edge. Break Color B, join Color A. Change to smaller ndl.

With Color A and smaller ndl, work in Garter Stitch until piece meas approx. 5½" from cast-on edge. Break Color A, join Color C. Change to larger ndl.

Next Rnd: With Color C, knit.

Cont as est'd in St st until piece meas 7½ (8¼, 9, 9¾, 10¼)" from cast-on edge.

Separate Front and Back

Next Row (RS): Knit across 55 (60, 65, 70, 75) Front sts, turn. Place 55 (60, 65, 70, 75) Back sts on holder or waste yarn.

FRONT

Next Row (WS): Purl.

Next Row (RS): Knit.

Cont as est'd in St st until piece meas 1¾ (2, 2¼, 2½, 3)" from Front/Back separation, ending with a WS Row.

Next Row (RS): K24 (27, 29, 32, 34) Left Front sts, bind off center 7 (6, 7, 6, 7) neck sts, k24 (27, 29, 32, 34) Right Front sts. Place Left Front sts on holder or waste yarn.

Shape Right Front Neck

Row 1 (WS): Cont as est'd to end.

Row 2 (RS): Bind off 2 (3, 3, 3, 3), cont as est'd to end - 22 (24, 26, 29, 31) sts rem.

Row 4: Bind off 2, cont as est'd to end - 20 (22, 24, 27, 29) sts rem.

RS Rows 6-12: Bind off 1, cont as est'd to end - 16 (18, 20, 23, 25) sts rem.

Row 14: Bind off 0 (0, 0, 1, 1), cont as est'd to end - 16 (18, 20, 22, 24) sts rem.

Knit, Relax, Smile, Repeat!

2021 © Universal Yarn, Inc.

www.universalyarn.com

All rights reserved. This pattern may not be reproduced for business, trade or sale.

Questions? Contact patterns@universalyarn.com

Cont even as est'd, if necessary, until piece meas 3½ (3¾, 4, 4¼, 4½)" from Front/Back separation, ending with a WS Row. Place sts on holder or waste yarn. Return Right Front sts to ndl.

Shape Right Front Neck

Row 1 (WS): Bind off 2 (3, 3, 3, 3), cont as est'd to end - 22 (24, 26, 29, 31) sts rem.

RS Rows 2-12: Cont as est'd to end.

Row 3: Bind off 2, cont as est'd to end - 20 (22, 24, 27, 29) sts rem.

RS Rows 5-11: Bind off 1, cont as est'd to end - 16 (18, 20, 23, 25) sts rem.

Row 13: Bind off 0 (0, 0, 1, 1), cont as est'd to end - 16 (18, 20, 22, 24) sts rem.

Cont even as est'd, if necessary, until piece meas 3½ (3¾, 4, 4¼, 4½)" from Front/Back separation, ending with a WS Row. Place sts on holder or waste yarn. Return Back sts to ndl, ready to work a RS row.

BACK

Row 1 (RS): Knit.

Complete as for Front.

SLEEVES

Cuff

With smaller ndl and Color A, cast on 32 (32, 32, 42, 42) sts.

Row 1 (RS): Work Row 1 of K1, P1 Rib to end.

Row 2 (WS): Work Row 2 of K1, P1 Rib to end.

Cont as est'd in K1, P1 Rib until piece meas 1" from cast-on edge. Break Color A, join Color B. Switch to larger ndl.

Main Sleeve

Note 1: Maintain patterns as est'd during sleeve shaping.

Note 2: Please read through the entire section carefully before proceeding. Sleeve Shaping begins during the Alternating Seeds section and continues through the St st section.

Row 1 (RS): Work Row 1 of Alternating Seeds to end.

Row 2 (WS): Work next row of Alternating Seeds to end.

Inc Row: K1, m1L, cont in patt as est'd to last st, m1R, k1 - 2 sts inc'd, 34 (34, 34, 44, 44) sts.

Rep Inc Row every 4 (4, 4, 6, 4) rows, 0 (4, 7, 4, 4) more times, then rep Inc Row every 6 (6, 6, 8, 6) rows, 6 (4, 2, 2, 5) times - 12 (16, 18, 12, 18) sts inc'd, 46 (50, 52, 56, 62) sts.

At the same time:

Cont as est'd through Row 4 of Alternating Seeds, then rep Rows 1-4 of Alternating Seeds patt until piece meas 3" from cast-on edge, ending with a WS Row. Break Color B, join Color C. With Color C, work in St st throughout remainder of Sleeve. When all increases are completed, cont even in St st until piece meas 7 (7, 7½, 7½, 8)" from cast-on edge, ending with a WS Row. Bind off all sts.

FINISHING

With RS facing tog, join Left Front and Left Back shoulder sts using the three-needle bind-off. Rep for Right Front and Right Back sts.

Gently wash and block to finished to measurements. Weave in ends. Sew Sleeves to Body. Sew Sleeve seams.

Neck Edging

With Color A and smaller ndl, pick up and knit 64 (68, 72, 78, 80) sts around neckline. PM and join to knit in the round. Work in K1, P1 Rib for 1". Bind off all sts in patt.

Abbreviations

approx	approximately
cont	continue
est'd	established
garter st	knit every row
inc('d)	increase(d)
k	knit
m	marker
m1L	insert left needle from front to back under horizontal strand of yarn lying between st just worked and next st, knit or purl this st through the back loop (1 st inc'd)
m1R	insert left needle from back to front under horizontal strand of yarn lying between st just worked and next st, knit or purl this st through the front loop (1 st inc'd)
ndl	needle
p	purl
patt	pattern
pm	place marker
rem	remain(ing)
rep	repeat
rnd	round
St st	Stockinette stitch (knit on RS rows, purl on WS rows; in the rnd, knit every rnd)
st(s)	stitch(es)
tog	together
WS	wrong side

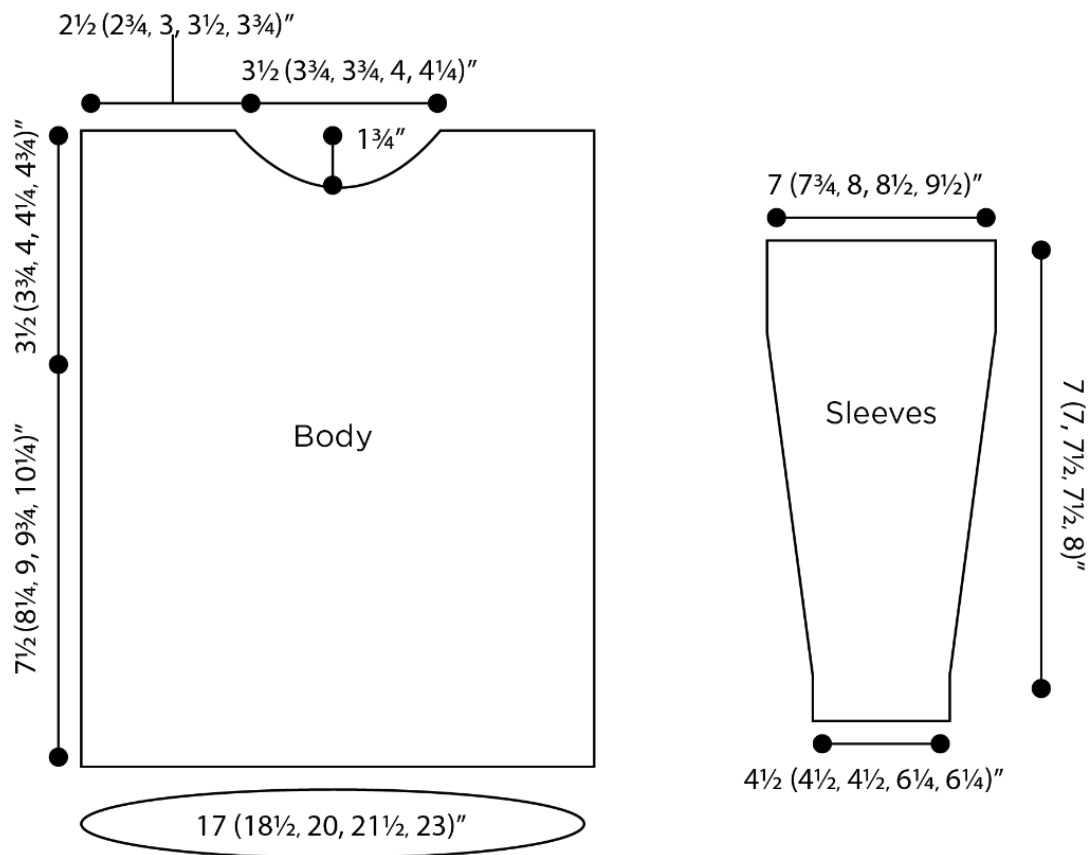
Knit, Relax, Smile, Repeat!

2021 © Universal Yarn, Inc.

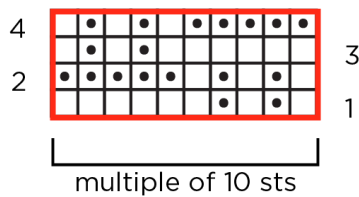
www.universalyarn.com

All rights reserved. This pattern may not be reproduced for business, trade or sale.

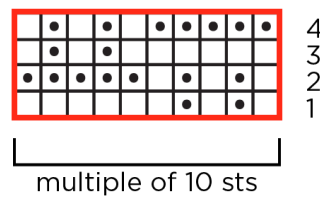
Questions? Contact patterns@universalyarn.com



Alternating Seeds
(flat)



Alternating Seeds
(in the round)



Key

- pattern repeat
- knit on RS, purl on WS
- purl on RS, knit on WS

Knit, Relax, Smile, Repeat!

2021 © Universal Yarn, Inc.

www.universalyarn.com

All rights reserved. This pattern may not be reproduced for business, trade or sale.

Questions? Contact patterns@universalyarn.com