



Pattern Collection: Accessories



Euphoric

Designed by Amy Gunderson

SIZES

One Size

FINISHED MEASUREMENTS

Width: 11"

Length: 70"

MATERIALS

Wisdom Yarns Pix (75% superwash wool, 25% nylon; 100g/459 yds)

- 108 Techno (MC) – 1 skein

Fibra Natura Whisper Lace (70% superwash wool, 30% silk; 50g/440 yds)

- 111 Ebony (CC) – 1 skein

Needles: US Size 5 (3.75 mm) straight *or size needed to obtain gauge*

Notions: Tapestry needle

GAUGE

20 sts x 38 rows = 4" in MC and garter st

Save time, check your gauge.

Knit. Relax. Smile. Repeat!

2020 © Universal Yarn, Inc.

All rights reserved.

www.universalyarn.com

This pattern may not be reproduced for business, trade or sale.

PATTERN NOTES

Change colors using the intarsia method. Bring the old color up and around the new color to prevent any holes from forming in the work.

When working the 4 stitch cast-on over the 4 stitch bind-off in the MC sections, work as follows: cast on 4 stitches, with the right needle, place the loop of the stitch just below the cast-on stitch just worked onto the left needle, knit or purl this stitch together with the following stitch on the left needle. This helps to prevent a gap from forming in the bind-off/cast-on hole.

SCARF

With MC, cast on 55 sts. Knit 4 rows in garter st.

Begin Pattern Repeat

Row 1 (RS): With MC p38, with CC k17.

Row 2 (WS): With CC cast on 5 sts, bind off 5 sts, p17, with MC p38.

Row 3: With MC p38, with MC k17.

Row 4: With MC [k3, bind off 4] 2 times, k3, with CC p38.

Row 5: With CC cast on 5 sts, bind off 5 sts, k38, with MC [k3, cast on 4 sts (*see pattern notes)] 2 times, k3.

Row 6: With MC k17, with MC p38.

Row 7: With MC p38, with CC k17.

Row 8: With CC cast on 5 sts, bind off 5 sts, p17, with MC p38.

Row 9: With MC p38, with MC k17.

Row 10: With MC k17, with CC p38.

Row 11: With CC cast on 5 sts, bind off 5 sts, p38, with MC k17.

Row 12: With MC k17, with MC p38.

Row 13: With MC [p3, bind off 4 sts] 5 times, p3, with CC k17.

Row 14: With CC cast on 5 sts, bind off 5 sts, p17, with MC [p3, cast on 4 sts] 5 times, p3.

Row 15: With MC p38, with MC k17.

Row 16: With MC k17, with CC p38.

Row 17: With CC cast on 5 sts, bind off 5 sts, k38, with MC k17.

Row 18: With MC k17, with MC p38.

Rep Rows 1-18 until piece meas 69", then rep Rows 1-8, 1 more time. With MC, knit 4 rows in garter st. Bind off all sts.

FINISHING

Weave in ends. Run blocking wires through the CC cast-on/bind-off pieces at the edges of the scarf. Pull scarf taut and pin on blocking board. Steam or wet block.

Abbreviations

CC	contrast color
garter st	knit every row
k	knit
MC	main color
meas	measures
p	purl
rep	repeat
st(s)	stitch(es)



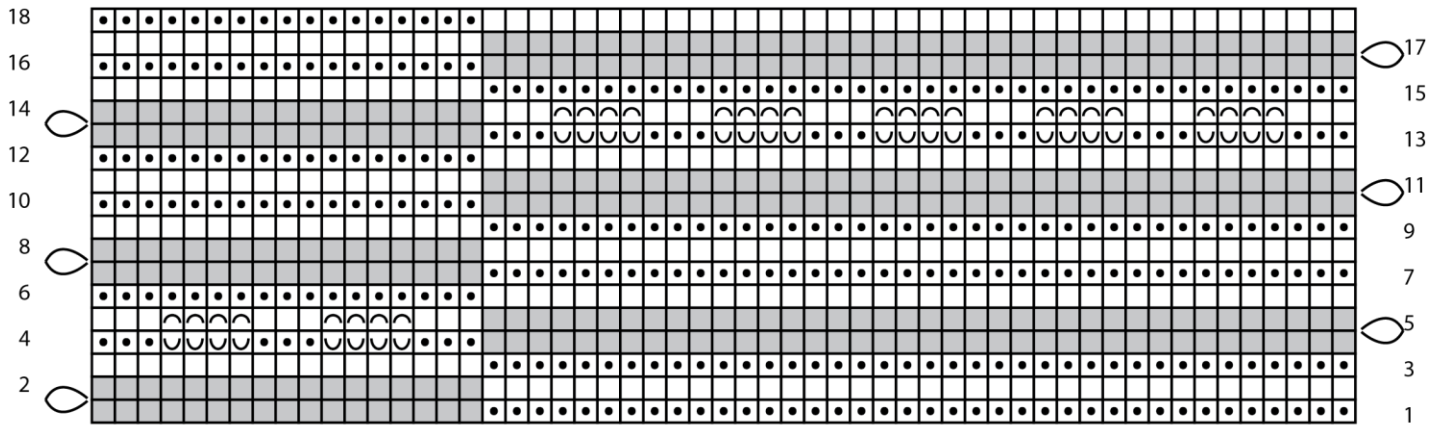
Knit. Relax. Smile. Repeat!

2020 © Universal Yarn, Inc.


All rights reserved.

www.universalyarn.com

This pattern may not be reproduced for business, trade or sale.



Key

- MC, knit on RS, purl on WS
- MC, knit on RS, purl on WS
- MC, bind off 1 st
- MC, cast on 1 st
- CC, knit on RS, purl on WS
-  CC, cast on 5 sts, bind off 5 sts (see pattern notes)

Knit. Relax. Smile. Repeat!

2020 © Universal Yarn, Inc.

All rights reserved.

www.universalyarn.com

This pattern may not be reproduced for business, trade or sale.