



## PATTERN COLLECTION

### Accessories



#### Espresso Bandana

Designed by Ashley Jane McIntyre

#### SKILL

Crochet

#### DIFFICULTY

Intermediate

#### SIZES

One Size

#### FINISHED MEASUREMENTS

Width (at widest edge): 16¼"

Length: 25"

#### MATERIALS

[Universal Yarn Bamboo Pop](#) (50% bamboo, 50% cotton; 100g/292 yds)

- 152 Chocolate - 1 ball

Hook: US Size F/5 (3.75 mm) or size needed to obtain gauge

Notions: Tapestry needle

#### GAUGE

20½ sts x 13 rows = 4" in Boxed Bead Stitch patt, after blocking.

Save time, check your gauge.

Knit, Relax, Smile, Repeat!

2023 © Universal Yarn, Inc.

[www.universalyarn.com](http://www.universalyarn.com)

All rights reserved. This pattern may not be reproduced for business, trade or sale.

Questions? Contact [patterns@universalyarn.com](mailto:patterns@universalyarn.com)

## PATTERN NOTES

This cute bandana features an all over texture reminiscent of espresso beans. Whether lounging in a coffee shop or out on the town, this sweet accessory is the perfect accent for a casual look!

This bandana is crocheted flat from tip to widest edge. An increase is made on every row, but only along one edge, creating the triangular shape. This pattern is both written and charted for your convenience.

## STITCH GUIDE

### Magic Circle

Make a circle with tail of yarn behind working yarn. Reach hk inside of circle made, yo with working yarn, pull up a lp. yo, ch indicated number of chs to begin patt. Once Rnd 1 is est'd, pull tail of yarn taut.

### Slanting Cluster (slcl)

[Yo, insert hk from front to back to front around the post of the previous dc, yo, pull up lp] 3 times (7 lps on hk), yo, draw through 6 lps (3 lps on hk), yo, draw through rem 2 lps on hk.

### Extended Single Crochet (esc)

Loosely insert hk into indicated st, yo, pull up lp (2 lps on hk), yo draw through 1 lp (2 lps on hk), yo, draw through both lps on hk.

### Boxed Bead Stitch

Ch a multiple of 3, plus 2.

**Row 1:** Sc in 2<sup>nd</sup> ch from hk and each ch across, turn.

**Row 2:** Ch 2 (counts as st), \* dc in next st, slcl, sk next st, esc in next st; rep from \* across, turn.

**Row 3:** Ch 1, sc in next and each st across, turn.

Rep Rows 2-3 for patt.

## PATTERN BEGINS

### Bandana

Begin with a magic circle.

**Row 1 (WS):** Ch 1, 3 sc in magic circle, turn – 3 sts.

**Row 2: (RS):** Ch 3 (counts as st here and throughout), dc in same st, slcl, sk next st, esc in next st, turn – 4 sts.

**Row 3:** Ch 1, sc in each st across to last st, 2 sc in last st, turn – 5 sts.

**Row 4:** Ch 3, esc in same st, \* esc in next st, dc in next st, slcl, sk next st; rep across to last st, esc in last st, turn – 6 sts.

**Row 5:** Rep Row 3 – 7 sts.



**Row 6:** Ch 3, esc in same st, \* dc in next st, slcl, sk next st, esc in next st; rep from \* across, turn – 8 sts.

**Row 7:** Rep Row 3 – 9 sts.

**Row 8:** Ch 3, dc in same st, slcl, sk next st, \* esc in next st, dc in next st, slcl, sk next st; rep across to last st, esc in last st, turn – 10 sts.

Rep Rows 3-8, 12 more times – 72 sts inc'd, 82 sts.

Rep Row 3 one more time – 1 st inc'd, 83 sts.

Fasten off.

## FINISHING

Gently wash and block to finished measurements. Weave in ends.

## Abbreviations

*	indicates a repeat section
ch	chain
est'd	established
hk	hook
inc('d)	increase(d)
lp(s)	loop(s)
patt	pattern
rem	remain(ing)
RS	right side
sc	single crochet
sk	skip
st(s)	stitch(es)
WS	wrong side
yo	yarn over

Knit, Relax, Smile, Repeat!

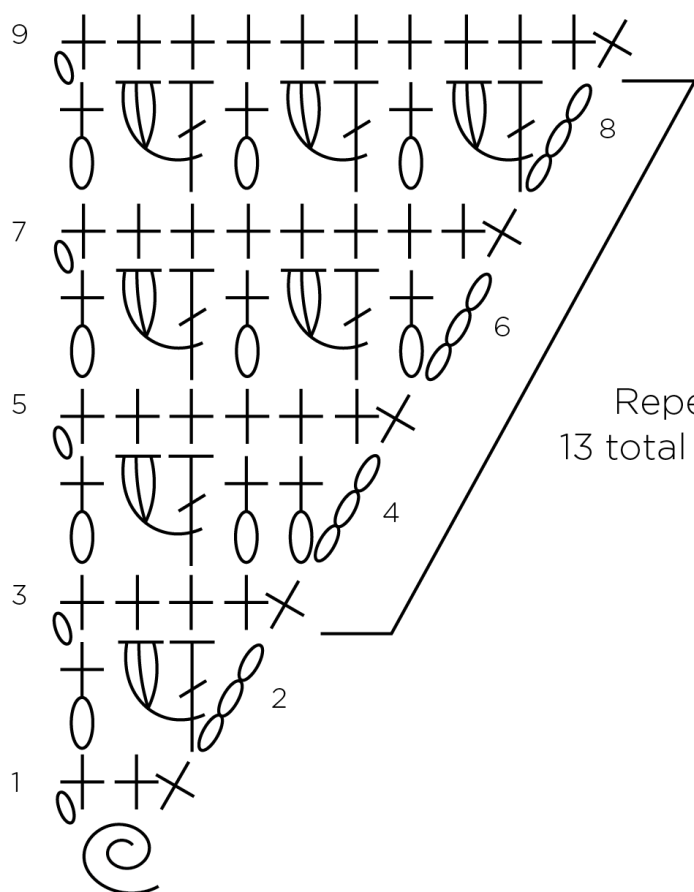
2023 © Universal Yarn, Inc.

[www.universalyarn.com](http://www.universalyarn.com)







All rights reserved. This pattern may not be reproduced for business, trade or sale.

Questions? Contact [patterns@universalyarn.com](mailto:patterns@universalyarn.com)

# Bandana (Boxed Bead Stitch)



## Key

-  ch
-  sc
-  slcl
-  esc
-  dc
-  magic circle

Knit, Relax, Smile, Repeat!

2023 © Universal Yarn, Inc.

[www.universalyarn.com](http://www.universalyarn.com)

All rights reserved. This pattern may not be reproduced for business, trade or sale.

Questions? Contact [patterns@universalyarn.com](mailto:patterns@universalyarn.com)