



Pattern Collection: Accessories



Equilateral Cowl

Designed by Rachel Brockman

SIZES

One Size

FINISHED MEASUREMENTS

Circumference: 24"

Length: 13½"

MATERIALS

Universal Yarn *Wool Pop* (50% bamboo 35% superwash wool, 15% polyamide; 100g/284 yds)

- 617 Raisin (A) – 1 skein
- 613 Nightshade (B) – 1 skein
- 618 Lemongrass (C) – 1 skein

Needles: US size 5 (3.75mm) 16" circular
or size needed to obtain gauge

US size 4 (3.5mm) 16" circular

Notions: Tapestry needle, stitch marker

GAUGE

25 sts x 27 rnds = 4" in Triangles patt
with larger ndl

Save time, check your gauge.

Knit. Relax. Smile. Repeat!

2020 © Universal Yarn, Inc.

All rights reserved.

www.universalyarn.com

This pattern may not be reproduced for business, trade or sale.

PATTERN NOTES

Okay – we promise that we know the triangles featured in this pattern are not equilateral triangles, but how could we not choose a triangle-inspired name with a cowl completely covered in triangles? This fun, colorful, and geometrically patterned cowl is framed with twisted ribbing. Knit in Wool Pop, a wool and bamboo blend, this cowl is as perfect for those breezy spring and fall days as it is all winter long.

This cowl is knit in the round from the bottom up. When working in Triangles Pattern, do not break yarn at each color change. Instead, carry the yarn up the inside of the work and twist the strands of yarn around one another every color change to prevent holes.

STITCH GUIDE

K1, P1 Twisted Rib

(even number of sts)

Rnd 1: * K1 tbl, p1; rep from * to end.

Rep Rnd 1 for patt.

COWL

Lower Edge

With smaller ndl and B, cast on 150 sts. PM and join to knit in the rnd, being careful not to twist sts.

Work in K1, P1 Twisted Rib until piece meas 1" from cast-on edge. Change to larger ndl.

Body

Note: Join colors as indicated on chart.

Rnd 1: Work Rnd 1 of Triangles Pattern to end. Patt will be repeated 25 times across each rnd.

Rnd 2: Work Rnd 2 of Triangles Pattern to end. Cont as est'd through Rnd 6 of Triangles Pattern. Rep Rnds 1-6 of Triangles Pattern until piece meas approx. 12½" from cast-on edge, ending with Rnd 6 of Triangles Pattern.

Change to smaller ndl. Break A and C. Cont with B only.

Upper Edge

Work in K1, P1 Twisted Rib until piece meas approx. 13½" from cast-on edge. Bind off all sts in patt.

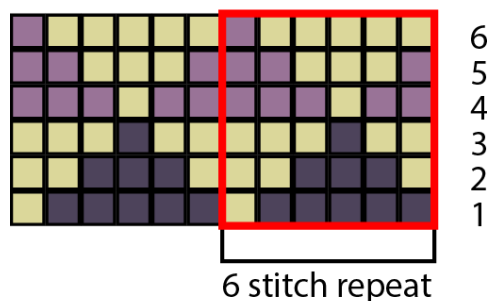
FINISHING

Gently wash and block to finished measurements. Weave in ends.




Abbreviations

approx.	approximately
cont	continue
est'd	established
k	knit
m	marker
meas	measures
ndl	needle
p	purl
patt	pattern
pm	place marker
rep	repeat
rnd	round
tbl	through the back loop(s)

Triangles Pattern



Key

-  pattern repeat
-  with A, knit
-  with B, knit
-  with C, knit

Knit. Relax. Smile. Repeat!

2020 © Universal Yarn, Inc.

All rights reserved.

www.universalyarn.com

This pattern may not be reproduced for business, trade or sale.